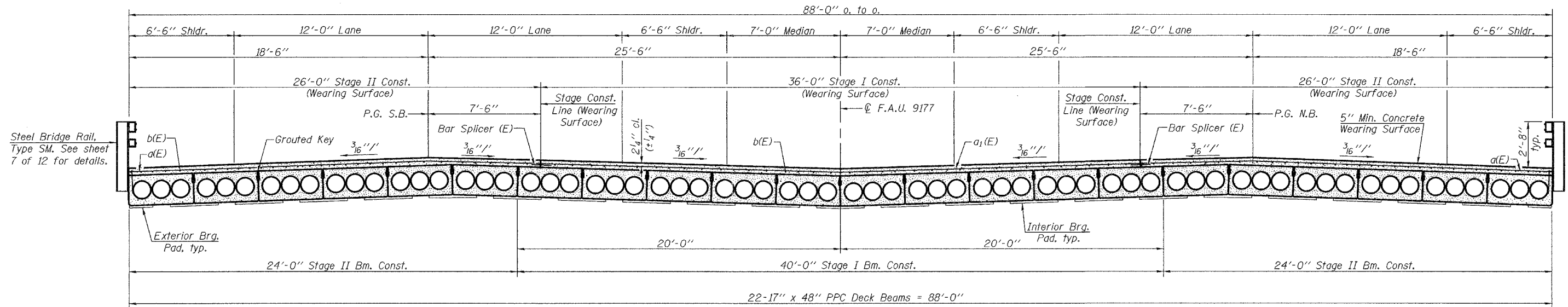


STATE OF ILLINOIS
DEPARTMENT OF TRANSPORTATION

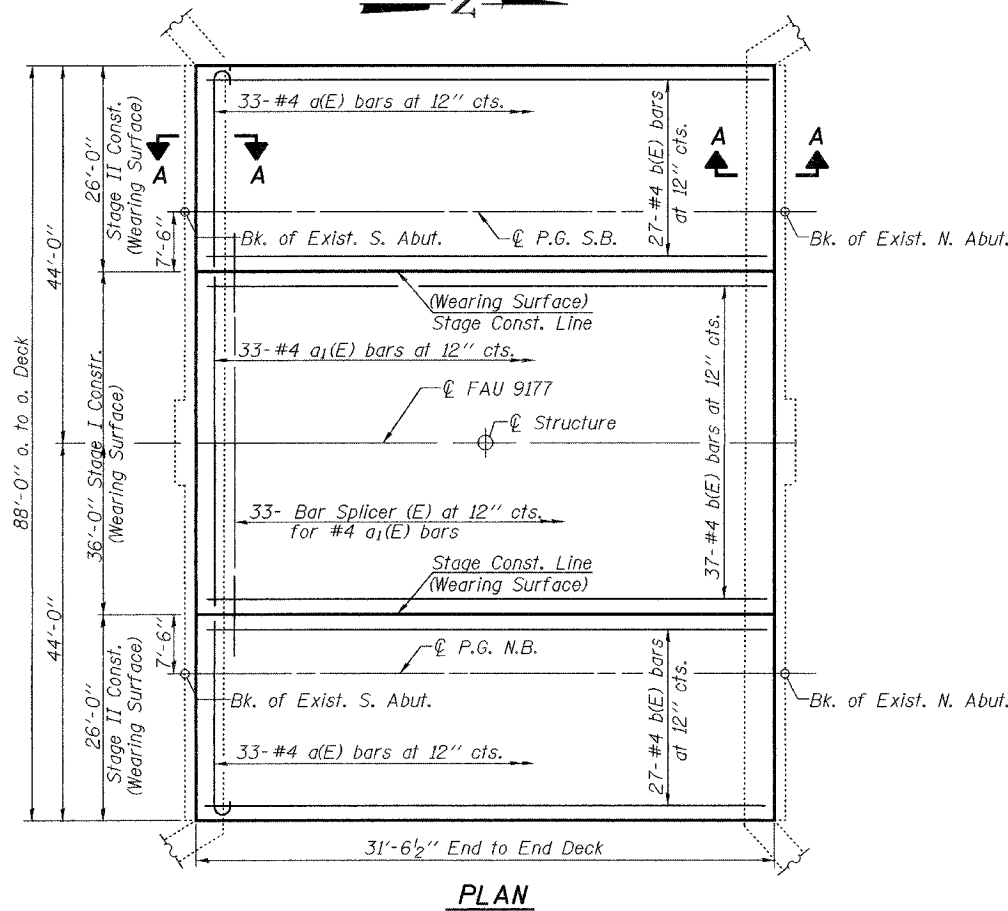
ROUTE NO.	SECTION	COUNTY	TOTAL SHEETS	SHEET NO.	SHEET NO. 6 12 SHEETS
F.A.U. 9177	44-IBR	St. Clair	29	21	
FED. ROAD DIST. NO. 7	ILLINOIS	FED. AID PROJECT-			

Contract #76566

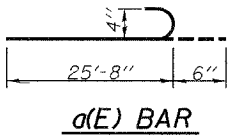
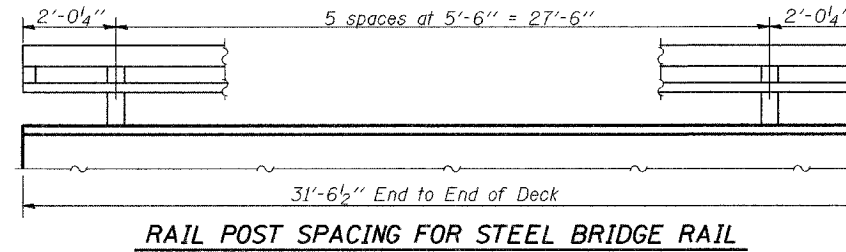


Note: Bend a(E) or a1(E) bars in field to maintain 2 1/4" (+/- 1/4") clearance to Top Surface of Concrete Wearing Surface. Also tilt hook of a(E) and a1(E) bars for 2 1/4" (+/- 1/4") Clearance.

CROSS SECTION
(Looking North)

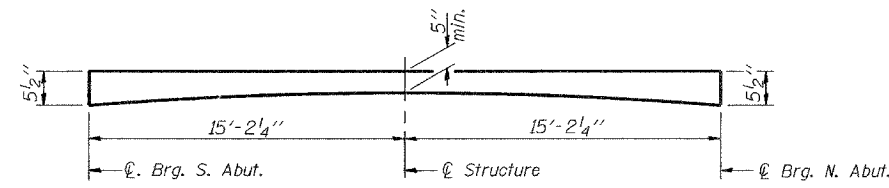
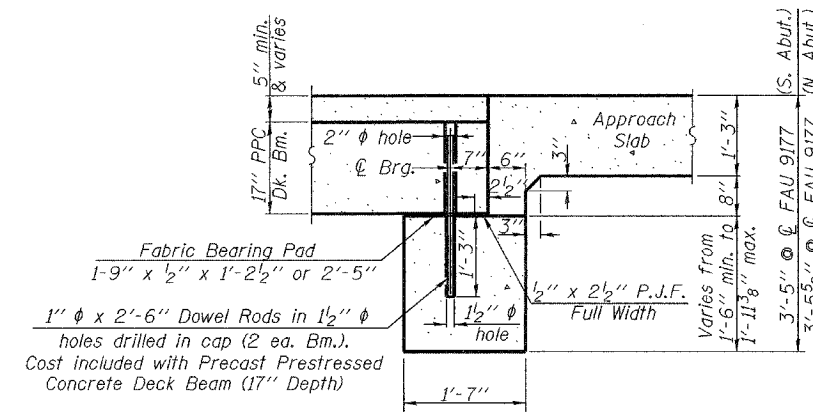


PLAN



CONCRETE WEARING SURFACE
BILL OF MATERIAL

Bar	No.	Size	Length	Shape	
a(E)	66	#4	26'-2"	┌	
a1(E)	33	#4	35'-8"	—	
b(E)	91	#4	31'-3"	—	
Reinforcement Bars, Epoxy Coated				Pound	3840
Concrete Wearing Surface				Sq. Yd.	309



Vary thickness of reinforced concrete wearing surface to compensate for expected camber.

SUPERSTRUCTURE DETAILS
F.A.U. ROUTE 9177-SECTION 44-IBR
ST. CLAIR COUNTY
STATION 100+00.00 (NB)
STATION 200+00.00 (SB)
S.N. 082-0096 (NB) & 082-0097 (SB)

DESIGNED	Nicholas Barnett
CHECKED	Ray Ahanchi
DRAWN	R. Sommer
CHECKED	NRB/GRA

EXAMINED	November 2 2006 Thomas J. Demagabki ENGINEER OF BRIDGE DESIGN
PASSED	Ralph E. Anderson ENGINEER OF BRIDGES AND STRUCTURES