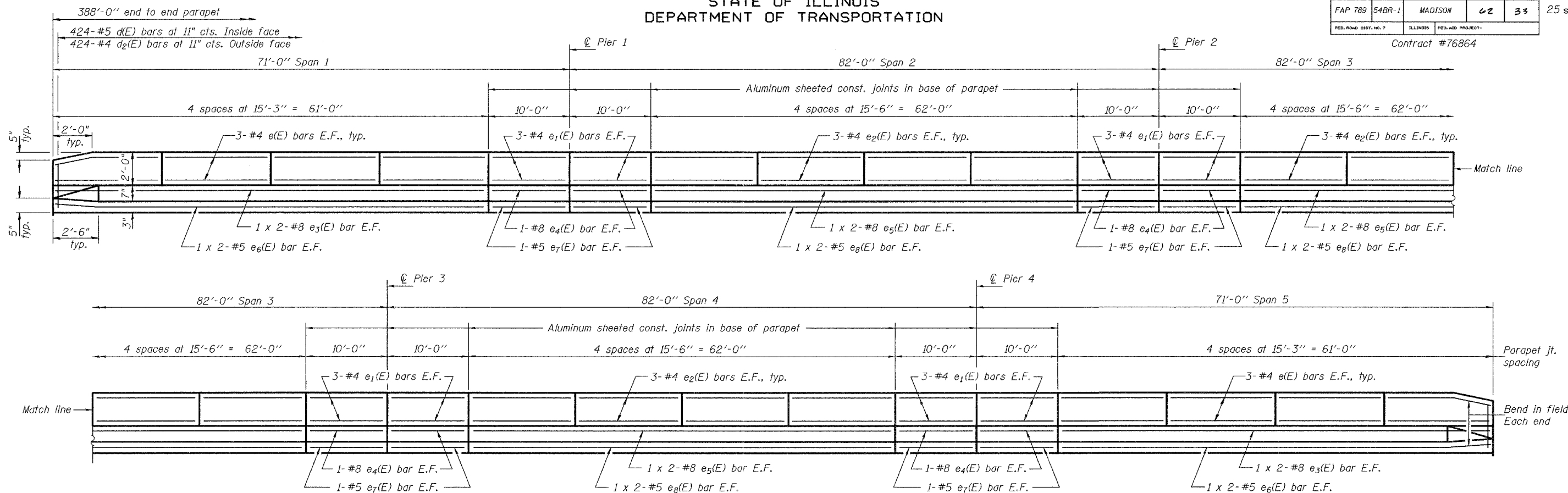


STATE OF ILLINOIS
DEPARTMENT OF TRANSPORTATION

ROUTE NO.	SECTION	COUNTY	SHEETS	SHEET NO.
FAP 789	54BR-1	MADISON	42	33
FED. ROAD DIST. NO. 7	ILLINOIS	FED. AID PROJECT-		

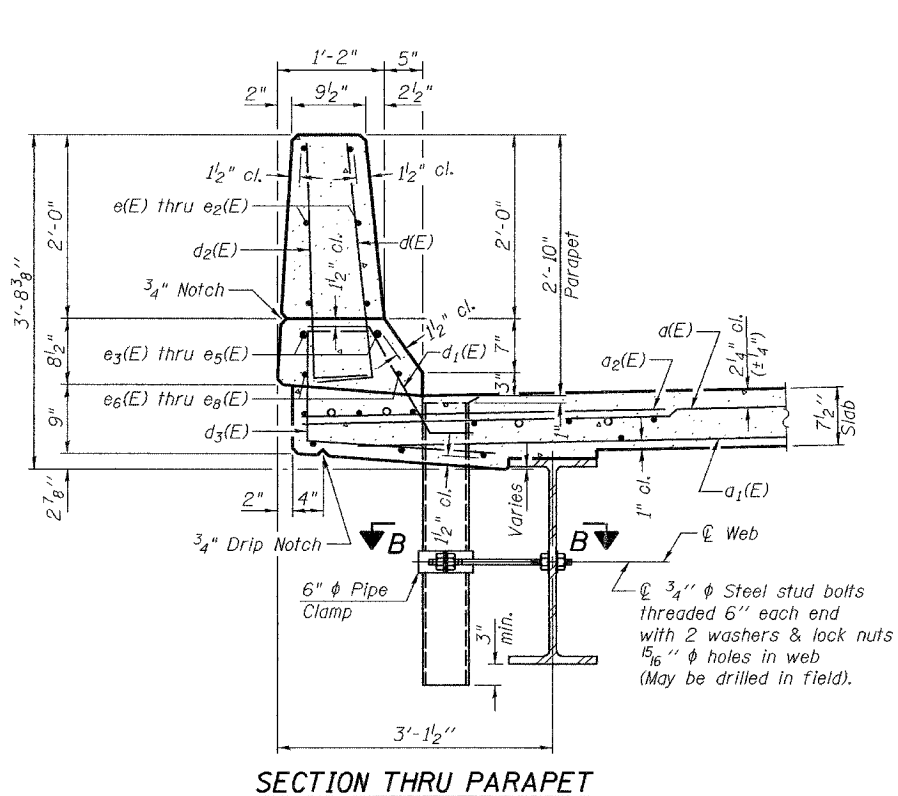
SHEET NO. 9
25 SHEETS

Contract #76864

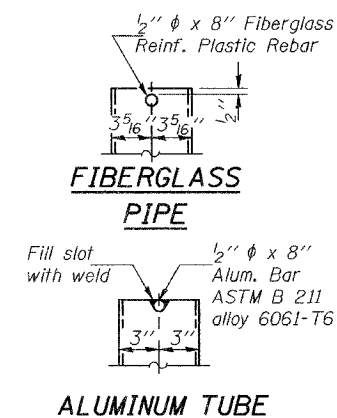


INSIDE ELEVATION OF PARAPET

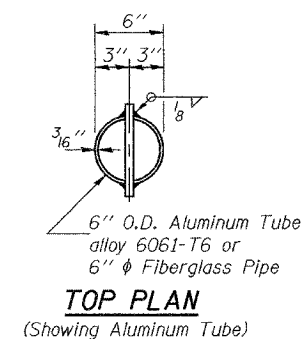
Notes: Fiberglass pipe shall conform to ASTM D 2996, with short-time rupture strength hoop tensile stress of 30,000 psi minimum.
Bars indicated thus 1 x 2-#5 etc. indicates 1 line of bars with 2 lengths per line.



SECTION THRU PARAPET

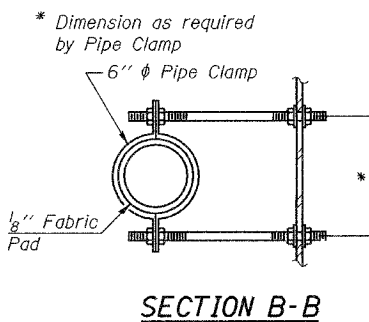


ALUMINUM TUBE



TOP PLAN

(Showing Aluminum Tube)



SECTION B-B

TOP PLAN

MIN. BAR LAPS

#5 bar = 1'-8"
#8 bar = 3'-5"

DESIGNED	Curt M. Evoy
CHECKED	Nick R. Barnett
DRAWN	h.t. duong
CHECKED	CME/NRB

Nov. 15, 2006
EXAMINED *Thomas J. Damagala*
ENGINEER OF BRIDGE DESIGN
PASSED *Ralph E. Anderson*
ENGINEER OF BRIDGES AND STRUCTURES

SUPERSTRUCTURE DETAILS
F.A.P. RTE. 789 - SEC. 54BR-1
MADISON COUNTY
STATION 280+73
STRUCTURE NO. 060-0340