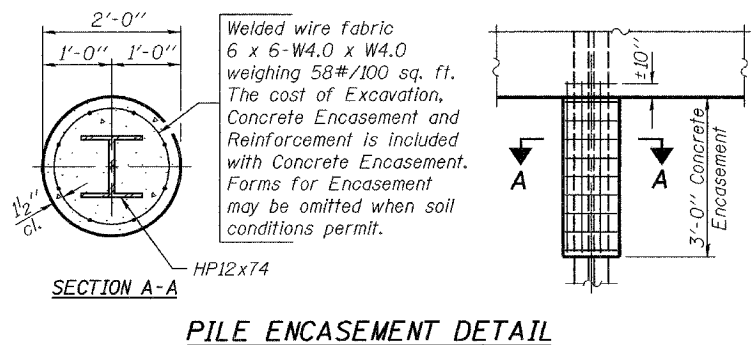


STATE OF ILLINOIS
DEPARTMENT OF TRANSPORTATION

ROUTE NO.	SECTION	COUNTY	DATE	SHEET NO.
FAP 789	54BR-1	MADISON	02	41
FED. ROAD DIST. NO. 7	ILLINOIS	FED. AID PROJECT-		

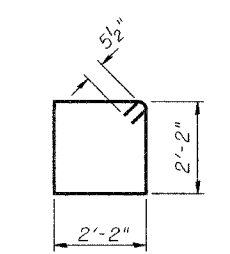
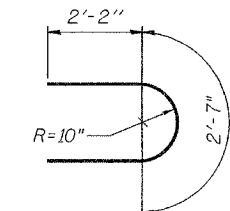
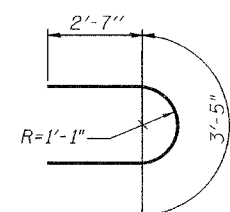
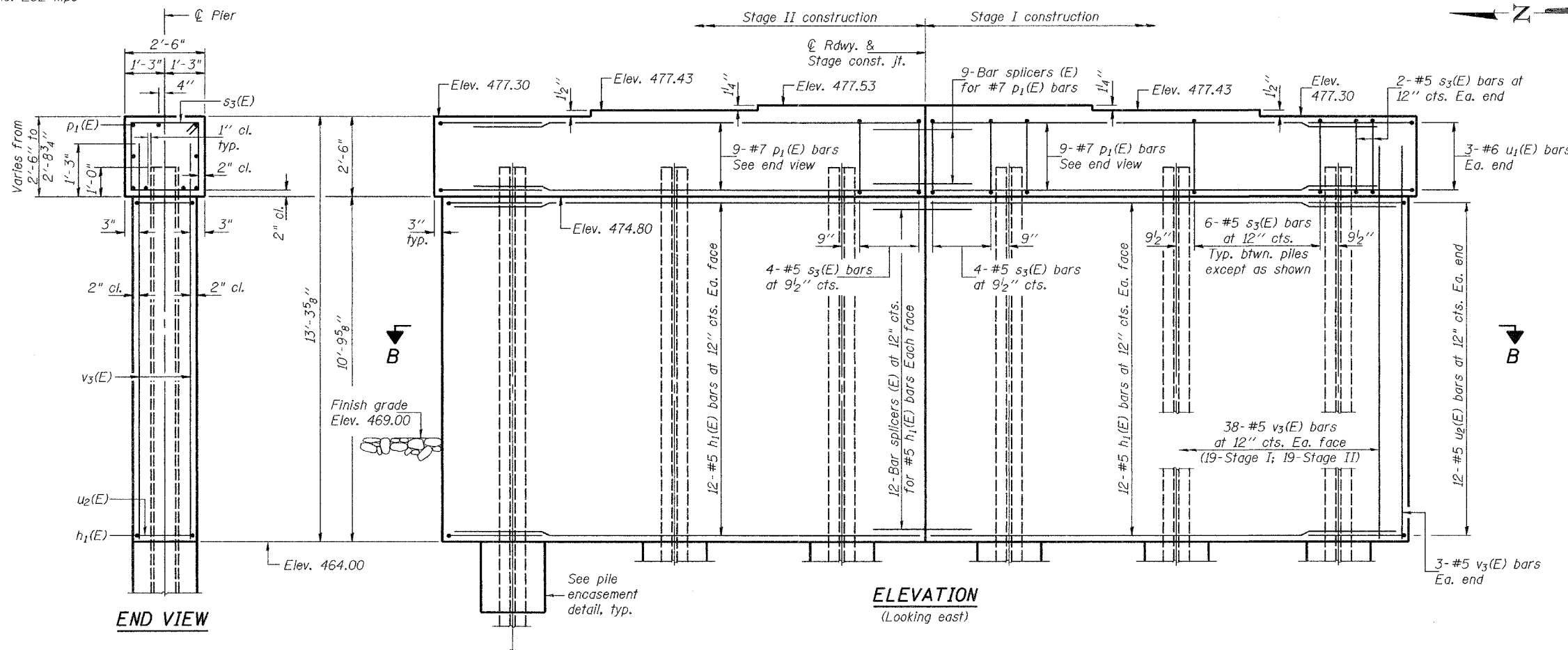
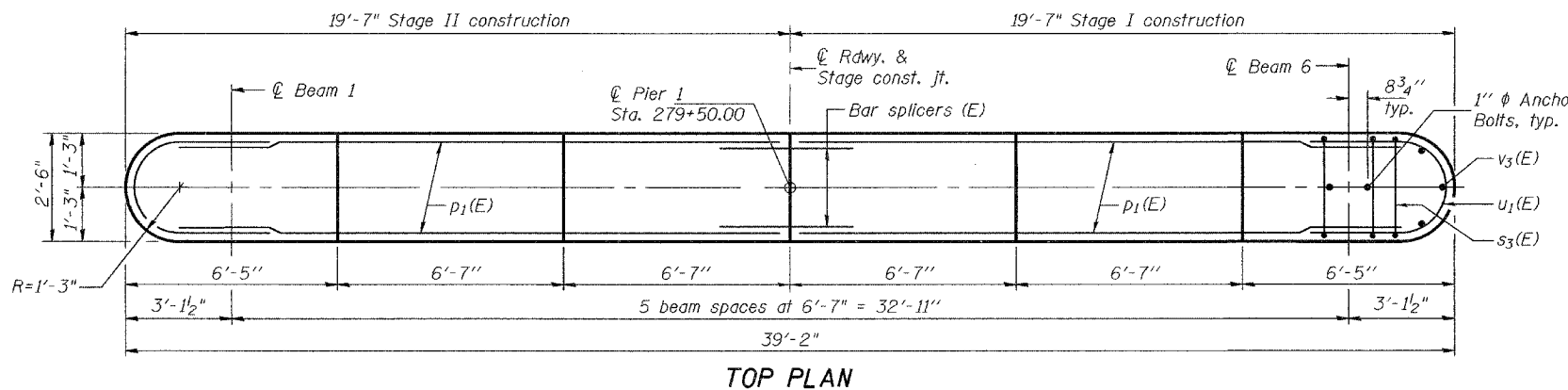
SHEET NO. 17
25 SHEETS

Contract #76864



PILE DATA

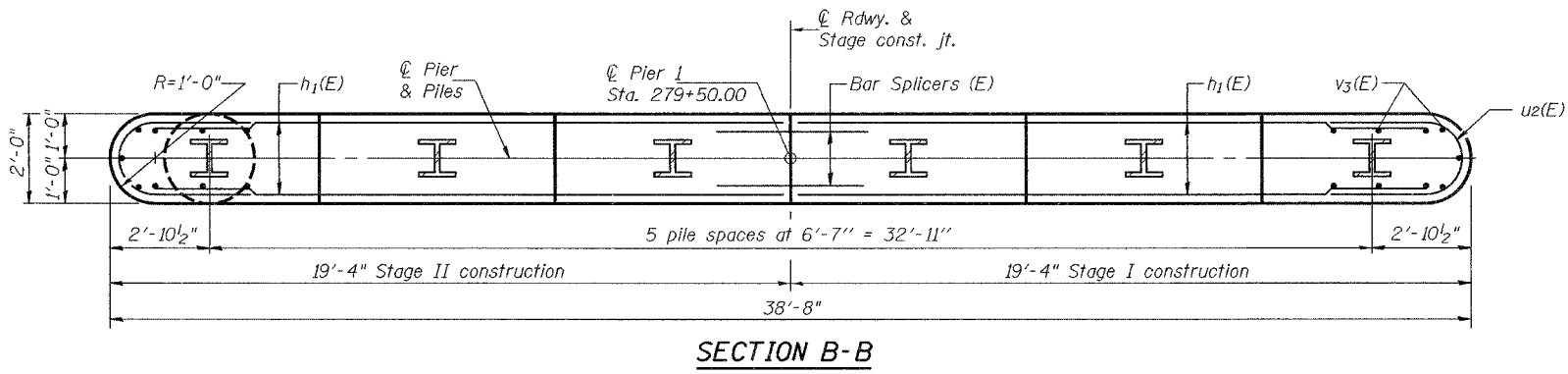
Type: Steel HP12x74
Nominal Required Bearing: 589 kips
Factored Resistance Available: 282 kips
Est. Length: 44 feet
No. Production Piles: 5
No. Test Piles: 1



BILL OF MATERIAL

Bar	No.	Size	Length	Shape
h ₁ (E)	48	#5	18'-2"	—
p ₁ (E)	18	#7	18'-2"	—
s ₃ (E)	36	#5	9'-7"	□
u ₁ (E)	6	#6	8'-7"	U
u ₂ (E)	24	#5	6'-11"	U
v ₃ (E)	82	#5	11'-11"	—
Concrete Structures		Cu. Yd.	40.0	
Reinforcement Bars, Epoxy Coated		Pound	3210	
Structure Excavation		Cu. Yd.	57	
Furnishing Steel Piles HP12x74		Foot	220	
Driving Piles		Foot	220	
Test Pile Steel HP12x74		Each		
Concrete Encasement		Cu. Yd.	2.1	
Anchor Bolts 1"		Each	12	

Notes: Four steps monolithically with cap.
For bar splicer details, see sheet 21 of 25.
For anchor bolt installation details, see sheet 14 of 25.



PIER 1
F.A.P. RTE. 789 - SEC. 54BR-1
MADISON COUNTY
STATION 280+73
STRUCTURE NO. 060-0340

DESIGNED	Curt M. Evoy
CHECKED	Nick R. Barnett
DRAWN	h.t. duong
CHECKED	CME/NRB

EXAMINED	Thomas J. Demagala ENGINEER OF BRIDGE DESIGN
PASSED	Ralph E. Anderson ENGINEER OF BRIDGES AND STRUCTURES

Nov. 15, 2006