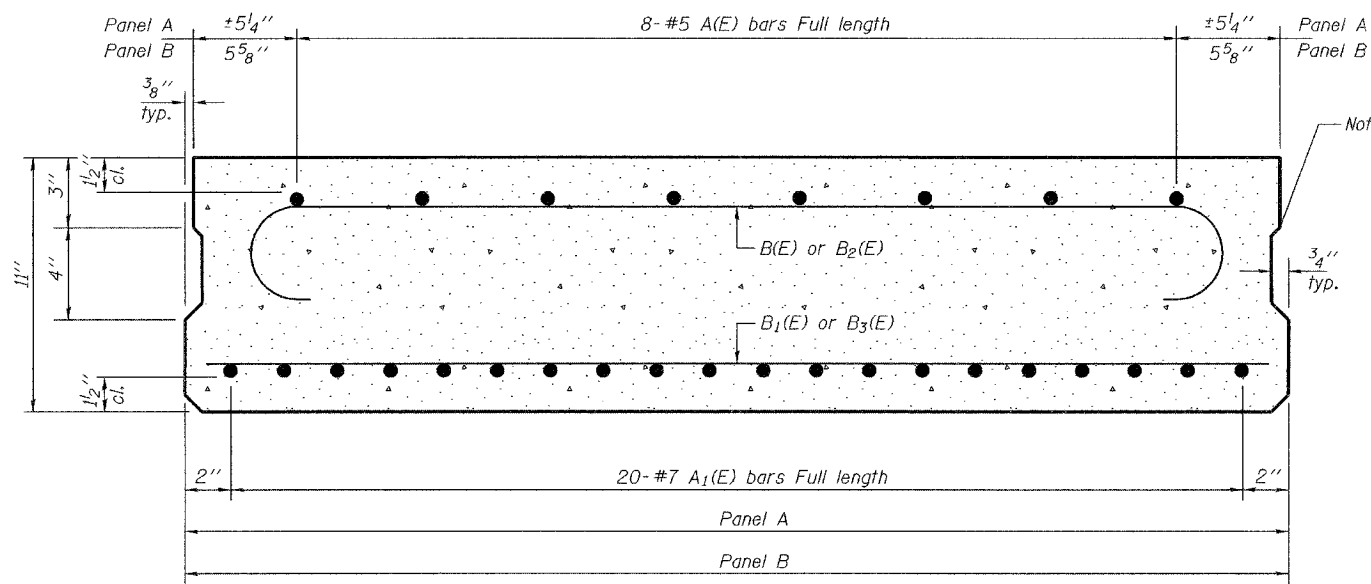


STATE OF ILLINOIS  
DEPARTMENT OF TRANSPORTATION

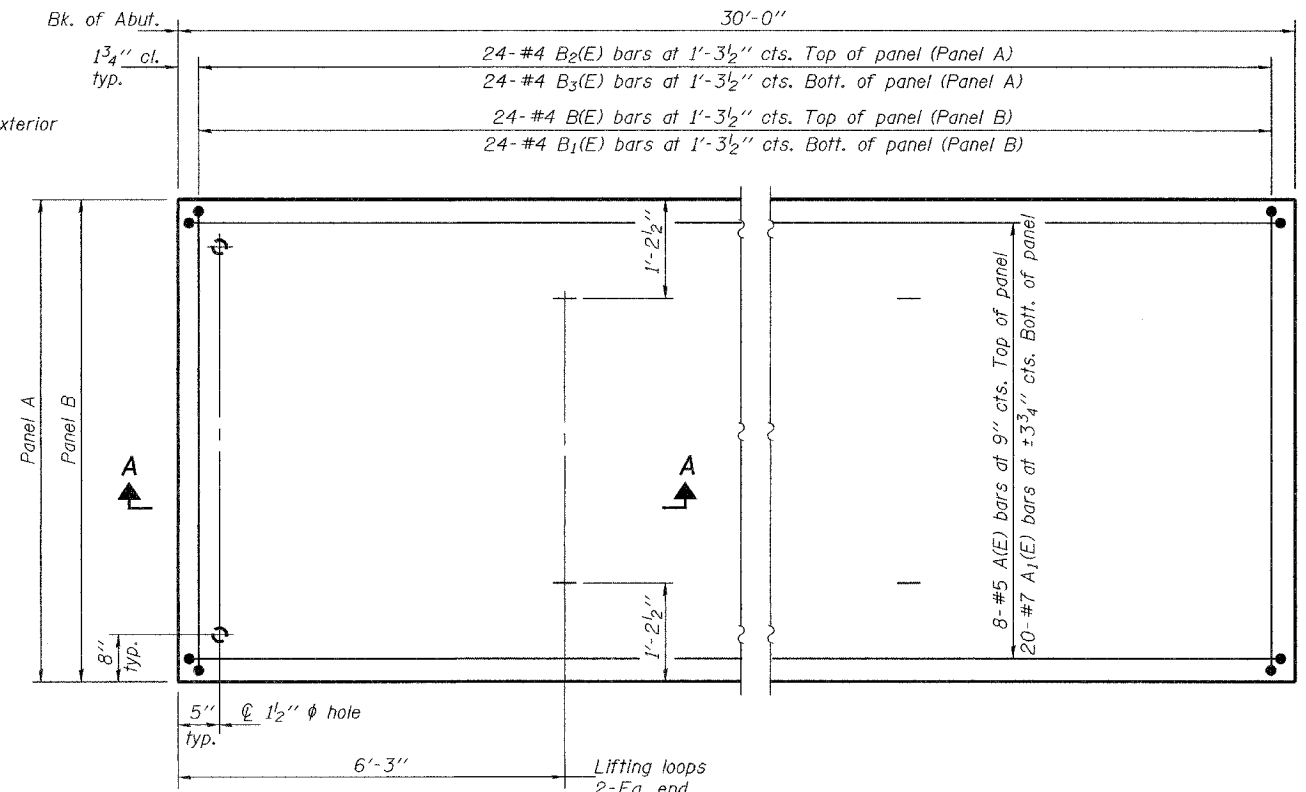
ROUTE NO.	SECTION	COUNTY	STATION	SHEET NO.	SHEET NO. 23 25 SHEETS
FAP 789	54BR-1	MADISON	62	47	
FED. ROAD DIST. NO. 7	ILLINOIS	FED. AID PROJECT-			

Contract #76864

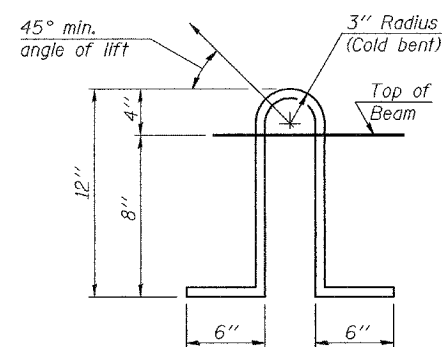


TYPICAL SECTION

	Panel width	Number required
Panel A	6'-2"	2
Panel B	6'-3"	4

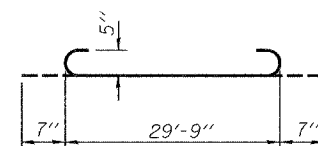


PLAN

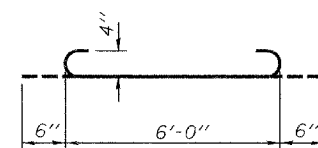


LIFTING LOOP DETAIL

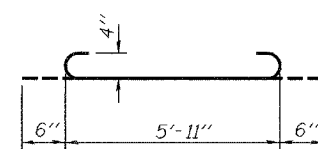
Lifting loops shall be 2-1/2" φ - 270 ksi strands as shown. Alternate approved lifting devices are also acceptable.



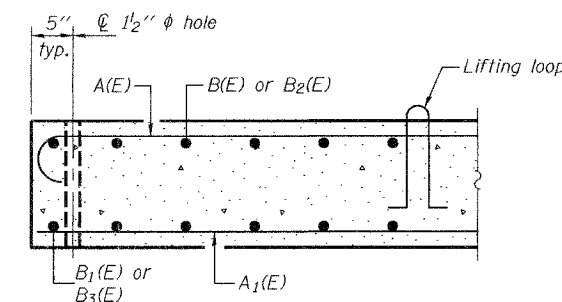
BAR A(E)



BAR B(E)



BAR B2(E)



SECTION A-A

Notes: Keyway surfaces shall be cleaned to remove form oil or other bond breaking material prior to shipment of the beams. Cleaning shall be done by sandblasting the keyway areas between the top of beam and the bottom edge of the key.

\*BAR LIST (PANEL A)

Bar	No.	Size	Length	Shape
A(E)	8	#5	30'-11"	⌋
A1(E)	20	#7	29'-9"	—
B2(E)	24	#4	6'-11"	⌋
B3(E)	24	#4	5'-11"	—

\*For information only

\*BAR LIST (PANEL B)

Bar	No.	Size	Length	Shape
A(E)	8	#5	30'-11"	⌋
A1(E)	20	#7	29'-9"	—
B(E)	24	#4	7'-0"	⌋
B1(E)	24	#4	6'-0"	—

\*For information only

DESIGNED	Curt M. Evoy
CHECKED	Nick R. Barnett
DRAWN	h.t. duong
CHECKED	CME/NRB

EXAMINED	Thomas J. Demagala ENGINEER OF STRUCTURES
PASSED	Ralph E. Anderson ENGINEER OF BRIDGES AND STRUCTURES

Nov. 15, 2006

APPROACH PAVEMENT DETAILS  
F.A.P. RTE. 789 - SEC. 54BR-1  
MADISON COUNTY  
STATION 280+73  
STRUCTURE NO. 060-0340