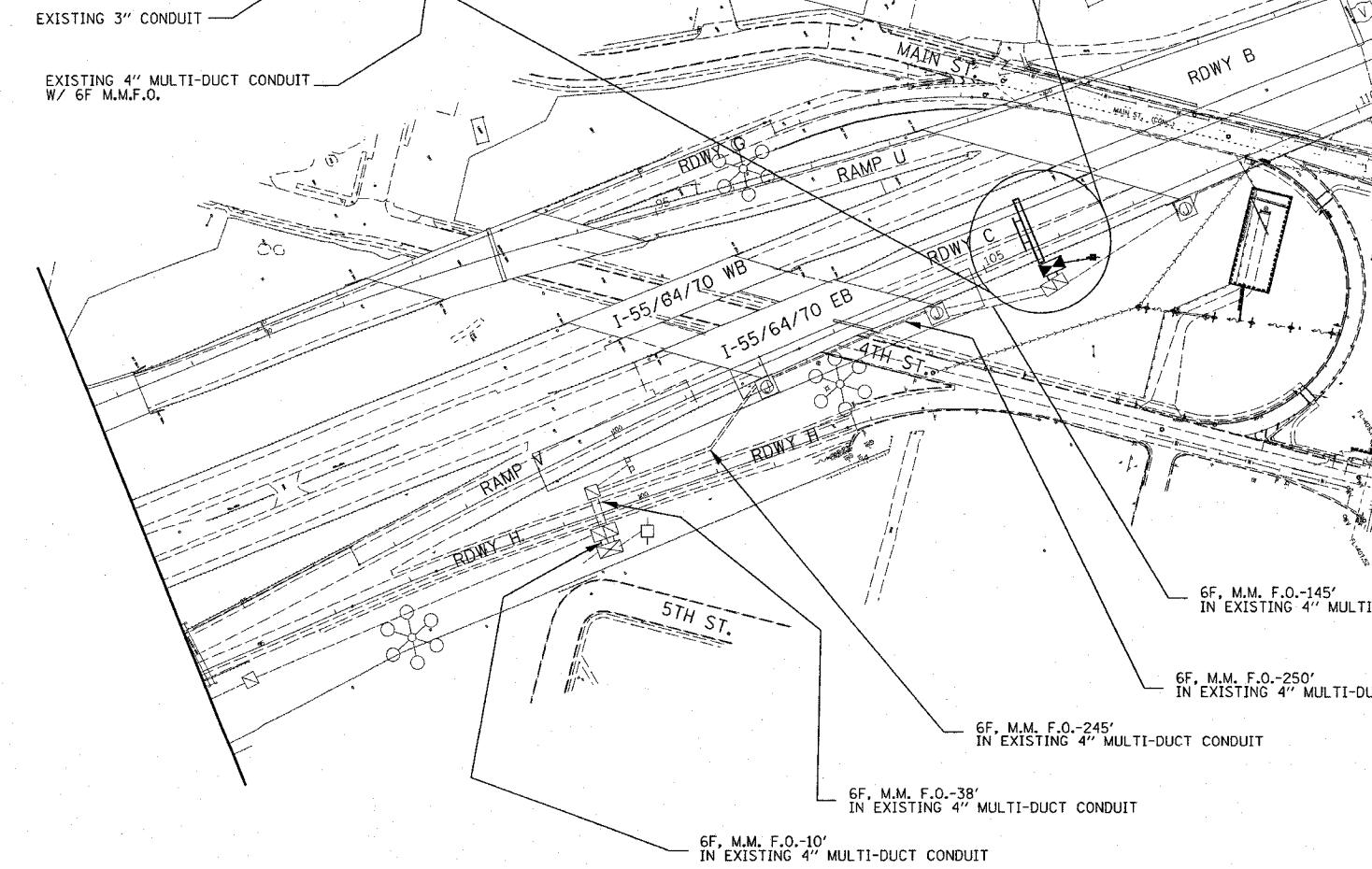
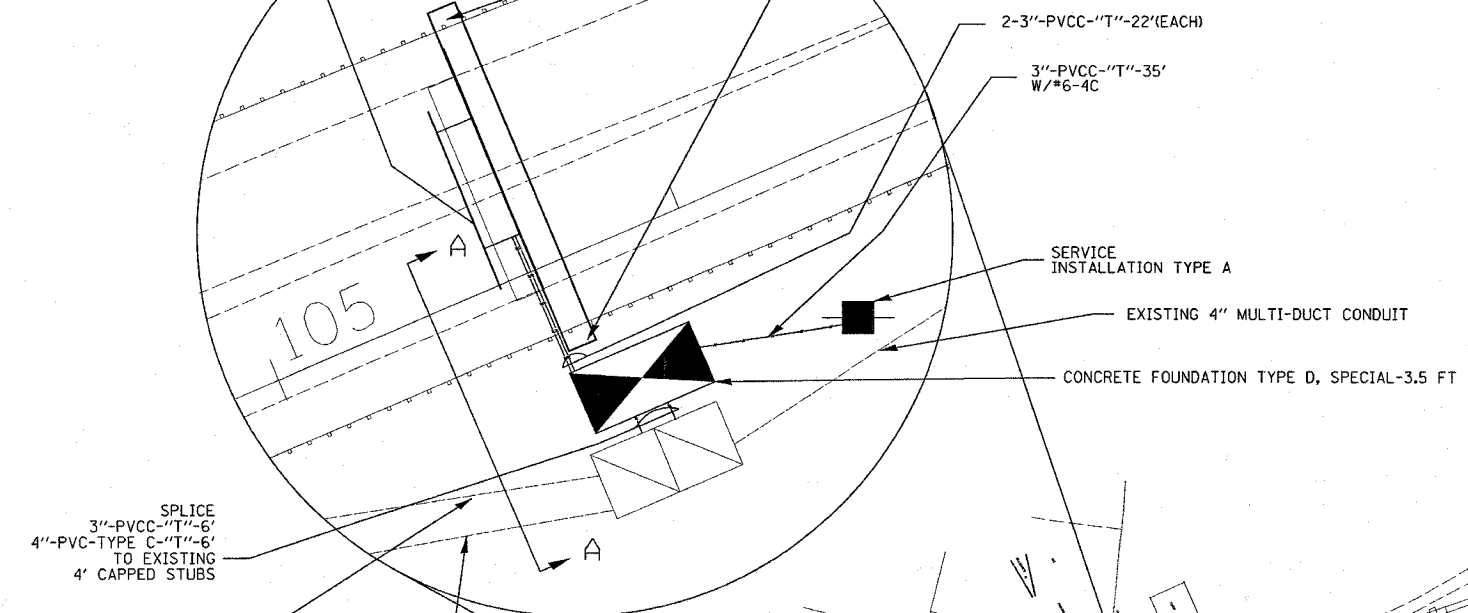
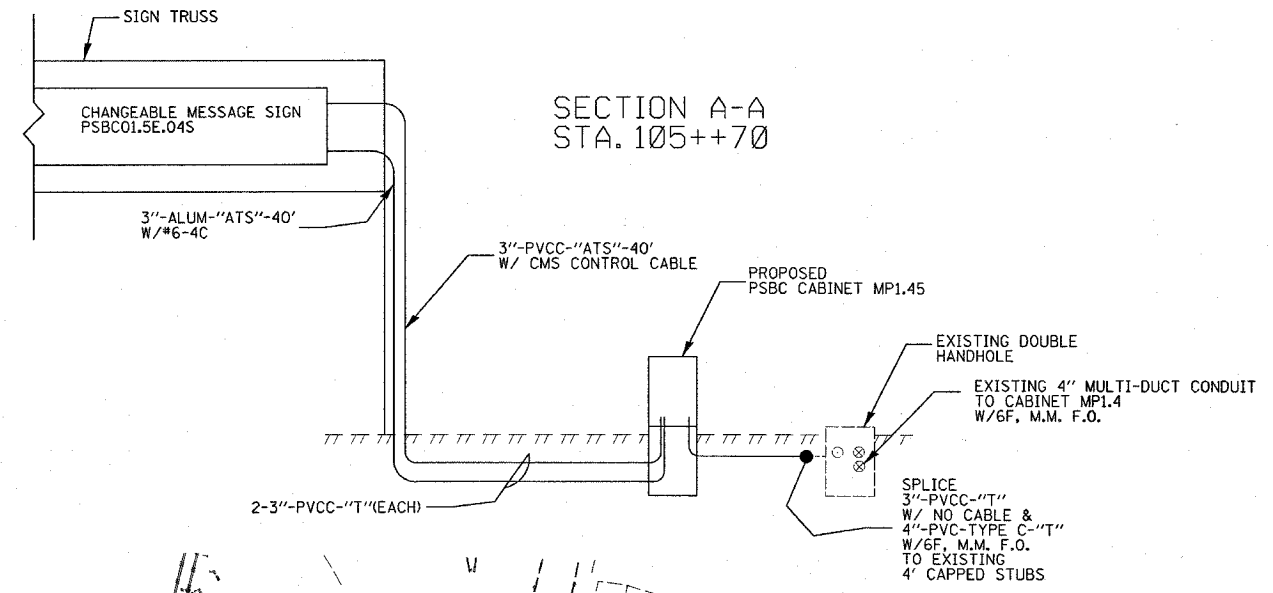


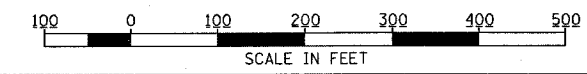
F.A.I. RTE.	SECTION	COUNTY	TOTAL SHEETS	SHEET NO.
55/70	82-41-1	ST. CLAIR	19	6

-OVERHEAD SIGN STRUCTURE-SPAN, TYPE III-A (5'-0" X 7'-0")-86FT
 -OVERHEAD SIGN STRUCTURE WALKWAY TYPE A-52 FT
 -TRUSS MOUNTED CHANGEABLE MESSAGE SIGN PSBC01.5E.04S-1 EACH

DRILLED SHAFT CONCRETE FOUNDATION-21.6 CU YD
 THE CONTRACTOR SHALL BE AWARE OF RIPRAP IN THE MEDIAN WITH RESPECT TO PERFORMING THIS WORK. THE COST OF REMOVING AND RESTORING RIPRAP SHALL BE INCLUDED IN THE CONTRACT UNIT PRICE FOR THIS PAY ITEM. NO ADDITIONAL COMPENSATION WILL BE ALLOWED FOR REMOVING AND RESTORING RIPRAP.



PLOT DATE = 10/17/2006
 FILE NAME = c:\projects\76a28\electrical\76a28_06.dgn
 PLOT SCALE = 1/8" = 1'-0"
 REFERENCE = #REF#



REVISIONS	
NAME	DATE

ILLINOIS DEPARTMENT OF TRANSPORTATION
LOCATION PSBC01.5E.04S
 FAP ROUTE 55/70
 SECTION 82-41-1
 ST. CLAIR COUNTY

DATE 10/17/2006