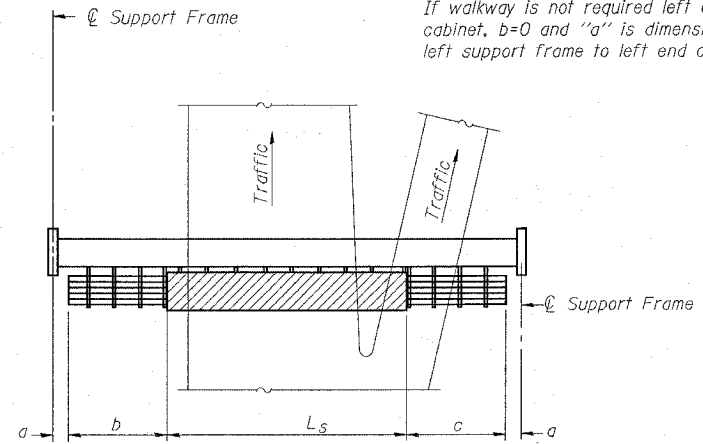


F.A.I. RTE.	SECTION	COUNTY	TOTAL SHEETS	SHEET NO.
55/70	82-4I-1	ST. CLAIR	19	16
STA. _____		TO STA. _____		
FED. ROAD DIST. NO. _____		ILLINOIS FED. AID PROJECT _____		

① If walkway is required left of the DMS cabinet, a=1'-6" and b=walkway lengths. If walkway is not required left of the DMS cabinet, b=0 and "a" is dimension from left support frame to left end of cabinet.

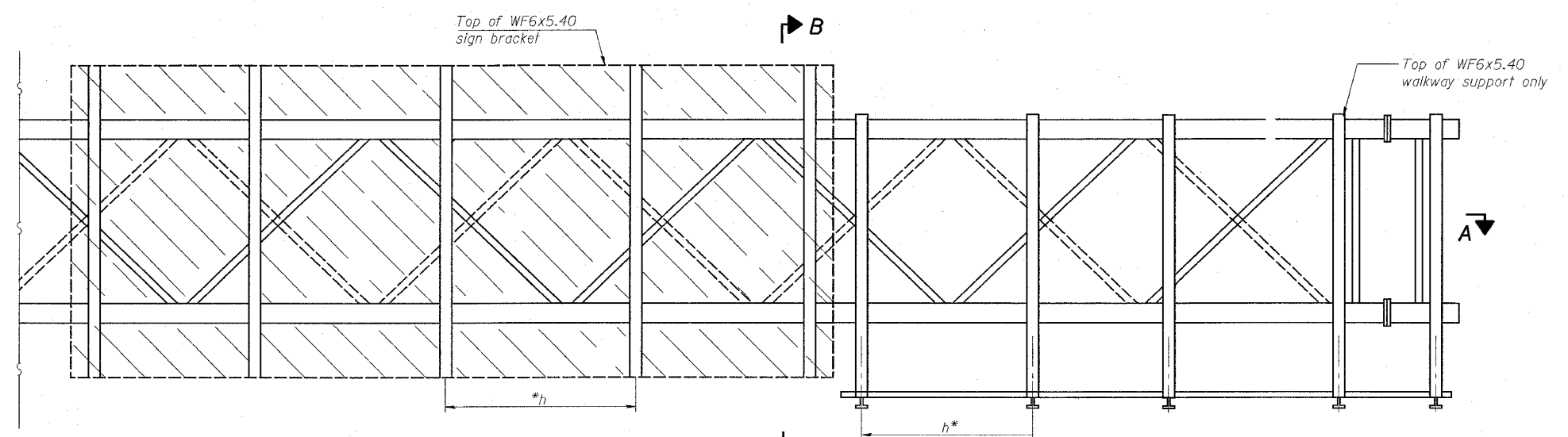


**PLAN WALKWAY AND HANDRAIL SKETCH**  
(Road plan beneath truss varies)

**BRACKET TABLE**

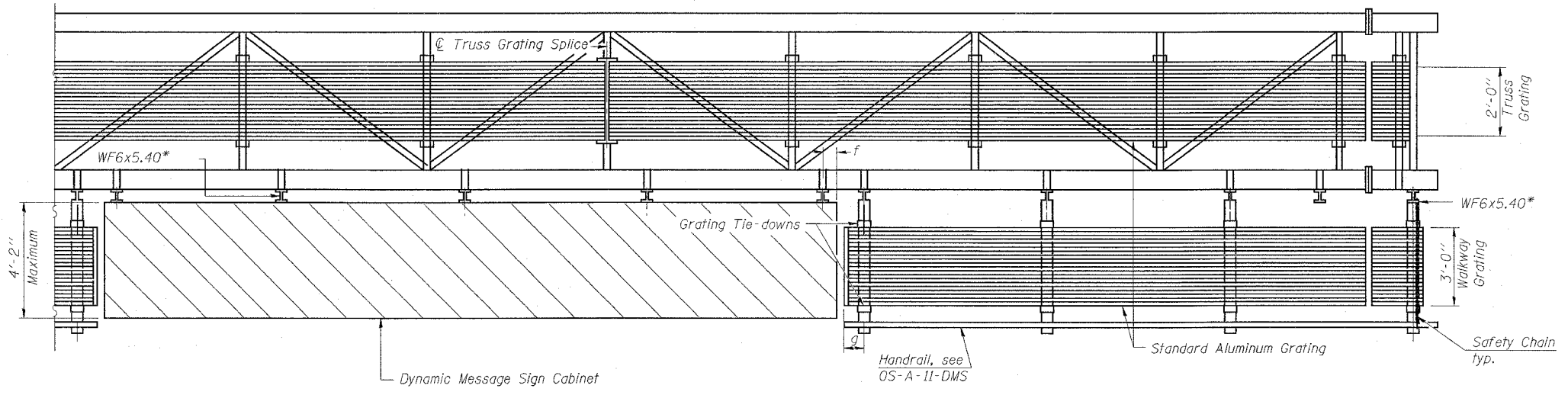
Sign Width		Number Brackets Required
Greater Than	Less Than or Equal To	
	8'-0"	2
8'-0"	14'-0"	3
14'-0"	20'-0"	4
20'-0"	26'-0"	5
26'-0"	32'-0"	6

Walkway and Truss Grating width dimensions are nominal and may vary ±1/2" based on available standard widths.



**TYPICAL FRONT ELEVATION**  
With handrail omitted for clarity.

Bracket and grating dimensions are nominal and will vary based on actual DMS cabinet dimensions plus manufacturer's mounting devices.



**SECTION A-A**

Handrail and walkway shall span a minimum of three brackets between splices and/or gap joints. Place all sign and walkway brackets as close to panel points as practical. Grating and handrail splices placed as needed.

Truss grating to facilitate inspection shall run full length (center to center of support frames) ±12" on overhead trusses. Cost of truss grating is included in "Overhead Sign Structure".

**Notes:**

- \*Space walkway brackets WF6x5.40 for efficiency and within limits shown:
- f = 12" maximum, 4" minimum (End of sign to center of nearest bracket)
- g = 12" maximum, 4" minimum (End of walkway grating to center of nearest support bracket)
- h = 6'-0" maximum (center to center of sign and/or walkway support brackets, WF6x5.40)

Maximum DMS weight = 5000 lbs. 4'-2" maximum cabinet depth includes depth of cabinet plus connection to WF6x5.40.  
For Section B-B and Grating Splice Details, see Base Sheet OS-A-10-DMS.  
For Handrail Splice Details, see Base Sheet OS-A-11-DMS.

Structure Number	Station	a	b	c	L <sub>s</sub>	Walkway Grating and Handrail Lengths
8S0821055R001.4	105+67.6	27' 6"	0	26'	31'	26'

NUMBER	REVISION	DATE

**OVERHEAD SIGN STRUCTURES  
ALTERNATE ALUMINUM WALKWAY DETAILS  
FOR DMS**

ILLINOIS DEPARTMENT OF TRANSPORTATION

F.A.I. ROUTE 55/70  
SECTION 82-4I-1  
ST. CLAIR COUNTY

PLT DATE = 7/01/06  
FILE NAME = 05A-9-DMS  
PLOT SCALE = 1/8"=1'-0"  
REFERENCE = 05A-9-DMS