

(2) SIGN PANELS TYPE 1 @ STA. 9+612 WITH (1) ALUMINUM SIGN POST, SPECIAL SIGN POST, SPECIAL (SEE DETAIL)

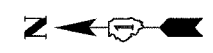


PROP. CURVE CL-6
 PI STA = 9+656.877
 N = 51,178.296
 E = 5,015.057
 $\Delta = 3^\circ 30' 27''$ (LT)
 R = 40.000 m
 T = 1.225 m
 L = 2.449 m
 E = 0.019 m

PROP. CURVE CL-7
 PI STA = 9+776.321
 N = 51,059.002
 E = 5,020.888
 $\Delta = 3^\circ 23' 43''$ (LT)
 R = 100.000 m
 T = 2.964 m
 L = 5.926 m
 E = 0.044 m

PROP. CURVE CL-9
 PI STA = 9+855.334
 N = 50,981.029
 E = 5,029.937
 $\Delta = 16^\circ 57' 38''$ (LT)
 R = 50.000 m
 T = 7.455 m
 L = 14.801 m
 E = 0.553 m

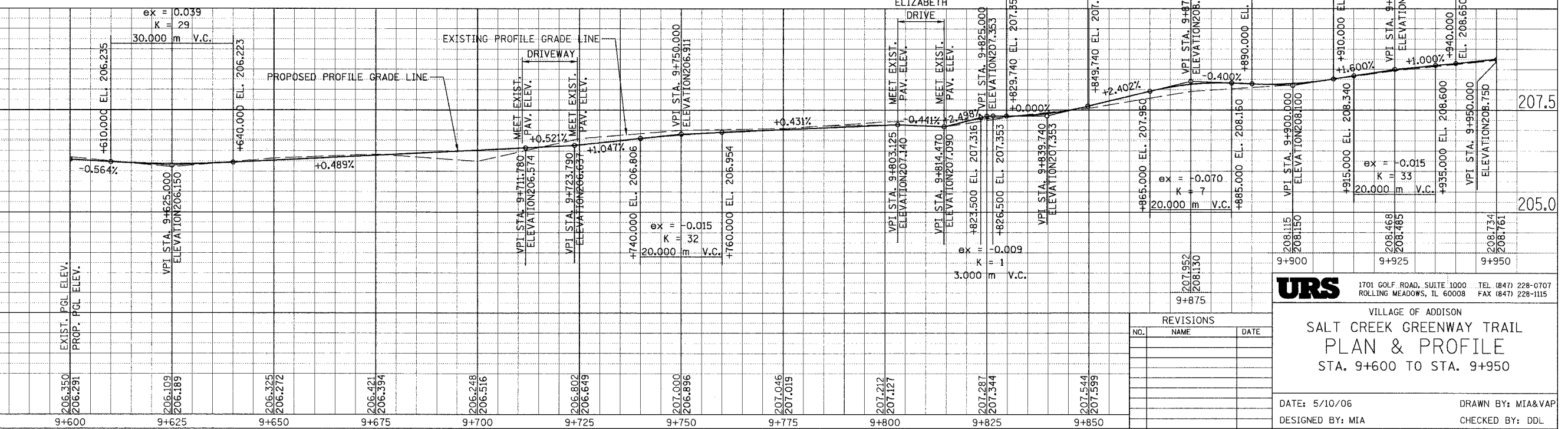
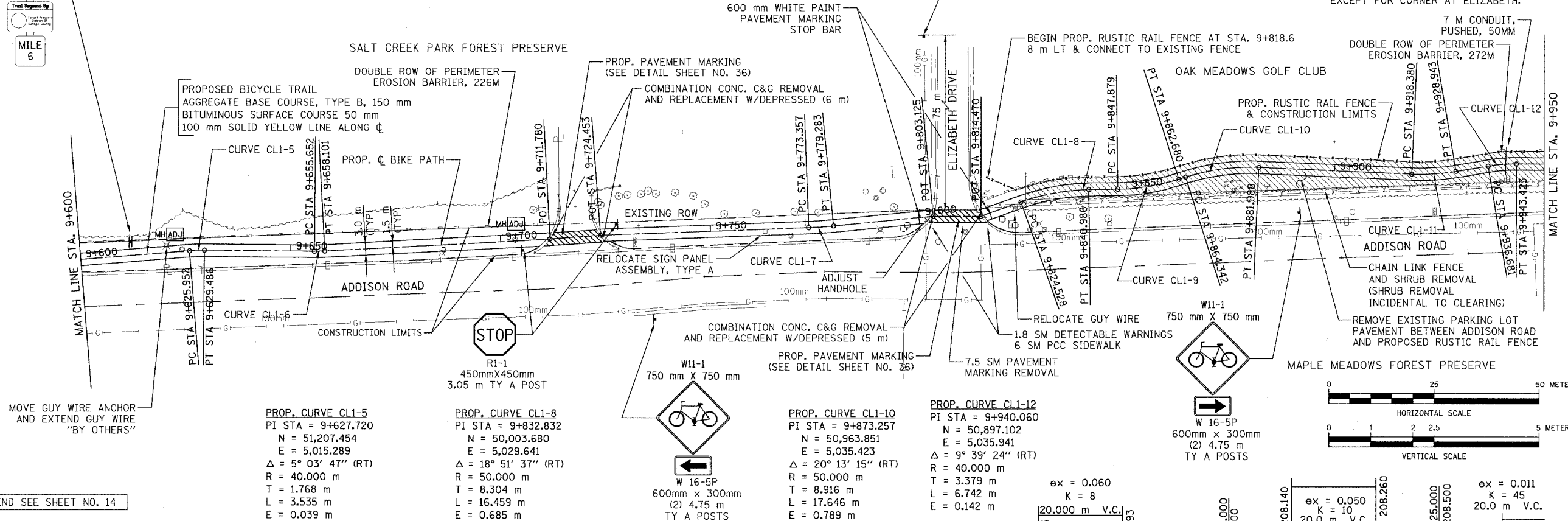
PROP. CURVE CL-11
 PI STA = 9+923.682
 N = 50,913.290
 E = 5,033.205
 $\Delta = 12^\circ 06' 15''$ (LT)
 R = 50.000 m
 T = 5.301 m
 L = 10.563 m
 E = 0.280 m



SECTION	COUNTY	TOTAL SHEETS	SHEET NO.
02-00090-00-BT	DUPAGE	117	15
STA. TO STA.			
IDOT PROJECT NO. M-8003(222)			
SALT CREEK GREENWAY TRAIL			

CONTRACT NO. 83713

PROPOSED RUSTIC RAIL FENCE LIMITS:
 STA. 9+818.6 LT TO STA. 10+003.5 LT
 STA. 10+013.80 LT TO STA. 10+149.80
 FENCE TO BE OFFSET 3 m LT OF PROP. ϕ EXCEPT FOR CORNER AT ELIZABETH.



URS 1701 GOLF ROAD, SUITE 1000 TEL (847) 228-0707
 ROLLING MEADOWS, IL 60008 FAX (847) 228-1115

VILLAGE OF ADDISON
**SALT CREEK GREENWAY TRAIL
 PLAN & PROFILE
 STA. 9+600 TO STA. 9+950**

DATE: 5/10/06 DRAWN BY: MIA&VAP
 DESIGNED BY: MIA CHECKED BY: DDL

REVISIONS		
NO.	NAME	DATE

FOR LEGEND SEE SHEET NO. 14