

PROP. CURVE CL1-25
 PI STA = 10+360.780
 N = 50,479.119
 E = 5,019.518
 $\Delta = 3^\circ 55' 40''$ (LT)
 R = 40.000 m
 T = 1.372 m
 L = 2.742 m
 E = 0.024 m

PROP. CURVE CL1-26
 PI STA = 10+378.150
 N = 50,461.838
 E = 5,017.757
 $\Delta = 12^\circ 16' 07''$ (LT)
 R = 30.000 m
 T = 3.224 m
 L = 6.424 m
 E = 0.173 m

PROP. CURVE CL1-28
 PI STA = 10+419.887
 N = 50,420.668
 E = 5,015.987
 $\Delta = 13^\circ 00' 35''$ (LT)
 R = 30.000 m
 T = 3.421 m
 L = 6.812 m
 E = 0.194 m

PROP. CURVE CL1-29
 PI STA = 10+437.960
 N = 50,402.571
 E = 5,015.555
 $\Delta = 7^\circ 32' 13''$ (LT)
 R = 30.000 m
 T = 1.976 m
 L = 3.946 m
 E = 0.065 m

PROP. CURVE CL1-31
 PI STA = 10+467.314
 N = 50,373.470
 E = 5,013.920
 $\Delta = 25^\circ 55' 11''$ (LT)
 R = 30.000 m
 T = 6.904 m
 L = 13.572 m
 E = 0.784 m

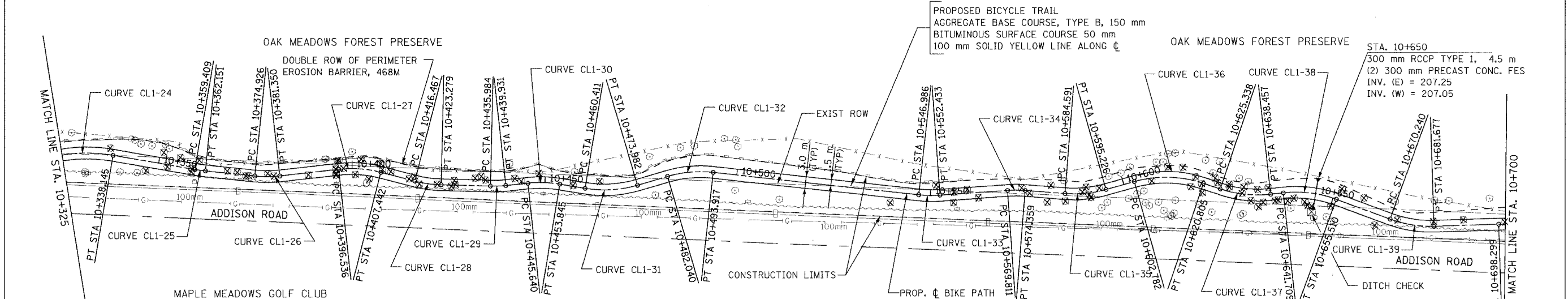
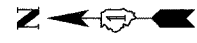
PROP. CURVE CL1-33
 PI STA = 10+549.717
 N = 50,291.897
 E = 5,013.106
 $\Delta = 10^\circ 24' 09''$ (LT)
 R = 30.000 m
 T = 2.731 m
 L = 5.447 m
 E = 0.124 m

PROP. CURVE CL1-35
 PI STA = 10+589.965
 N = 50,251.741
 E = 5,013.304
 $\Delta = 20^\circ 18' 39''$ (LT)
 R = 30.000 m
 T = 5.374 m
 L = 10.635 m
 E = 0.477 m

PROP. CURVE CL1-37
 PI STA = 10+632.004
 N = 50,210.939
 E = 5,012.785
 $\Delta = 25^\circ 03' 14''$ (LT)
 R = 30.000 m
 T = 6.666 m
 L = 13.118 m
 E = 0.732 m

PROP. CURVE CL1-39
 PI STA = 10+676.029
 N = 50,168.213
 E = 5,005.267
 $\Delta = 21^\circ 50' 34''$ (LT)
 R = 30.000 m
 T = 5.789 m
 L = 11.437 m
 E = 0.553 m

SECTION	COUNTY	TOTAL SHEETS	SHEET NO.
02-00090-00-BT	DUPAGE	117	17
STA. TO STA.			
IDOT PROJECT NO. M-8003(222)			
SALT CREEK GREENWAY TRAIL			
CONTRACT NO. 83713			



PROP. CURVE CL1-24
 PI STA = 10+330.317
 N = 50,509.352
 E = 5,024.710
 $\Delta = 22^\circ 43' 46''$ (RT)
 R = 40.000 m
 T = 8.040 m
 L = 15.868 m
 E = 0.800 m

PROP. CURVE CL1-27
 PI STA = 10+402.050
 N = 50,438.065
 E = 5,020.446
 $\Delta = 20^\circ 49' 42''$ (RT)
 R = 30.000 m
 T = 5.514 m
 L = 10.906 m
 E = 0.502 m

PROP. CURVE CL1-30
 PI STA = 10+449.768
 N = 50,390.826
 E = 5,016.825
 $\Delta = 15^\circ 40' 12''$ (RT)
 R = 30.000 m
 T = 4.128 m
 L = 8.205 m
 E = 0.283 m

PROP. CURVE CL1-32
 PI STA = 10+488.057
 N = 50,353.346
 E = 5,019.851
 $\Delta = 22^\circ 41' 02''$ (RT)
 R = 30.000 m
 T = 6.017 m
 L = 11.877 m
 E = 0.598 m

PROP. CURVE CL1-34
 PI STA = 10+572.089
 N = 50,269.569
 E = 5,014.722
 $\Delta = 8^\circ 41' 11''$ (RT)
 R = 30.000 m
 T = 2.278 m
 L = 4.548 m
 E = 0.086 m

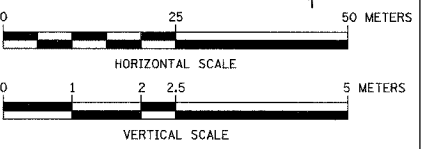
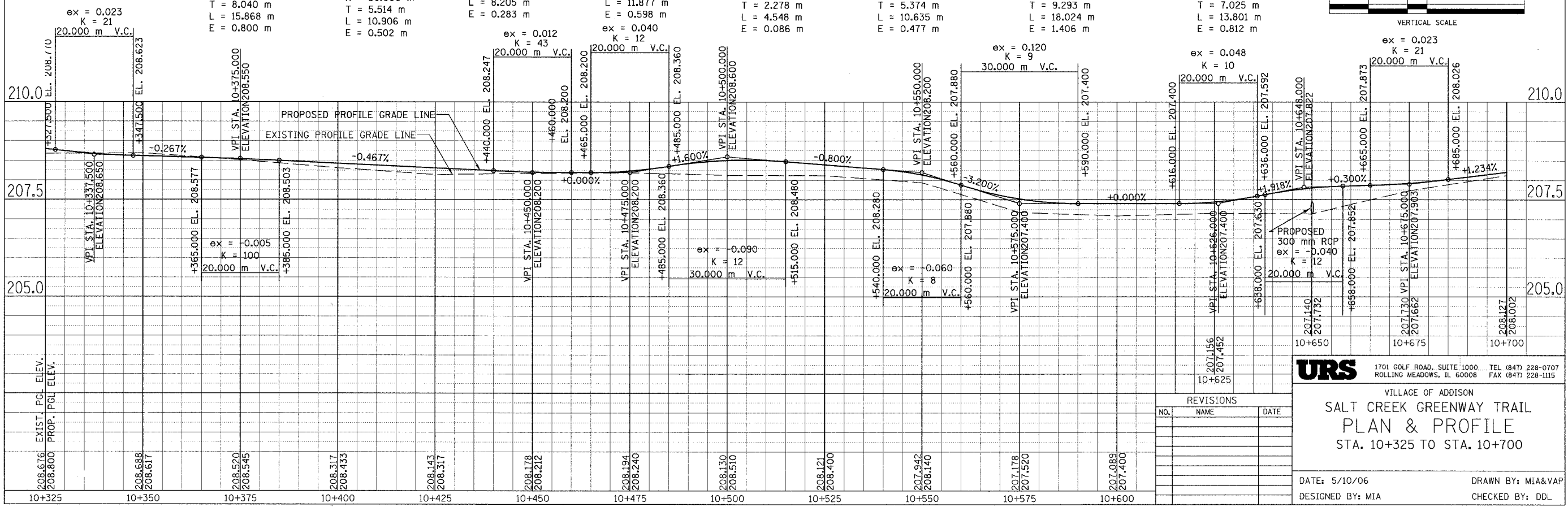
PROP. CURVE CL1-35
 PI STA = 10+589.965
 N = 50,251.741
 E = 5,013.304
 $\Delta = 20^\circ 18' 39''$ (LT)
 R = 30.000 m
 T = 5.374 m
 L = 10.635 m
 E = 0.477 m

PROP. CURVE CL1-36
 PI STA = 10+612.075
 N = 50,230.354
 E = 5,019.341
 $\Delta = 34^\circ 25' 21''$ (RT)
 R = 30.000 m
 T = 9.293 m
 L = 18.024 m
 E = 1.406 m

PROP. CURVE CL1-37
 PI STA = 10+632.004
 N = 50,210.939
 E = 5,012.785
 $\Delta = 25^\circ 03' 14''$ (LT)
 R = 30.000 m
 T = 6.666 m
 L = 13.118 m
 E = 0.732 m

PROP. CURVE CL1-38
 PI STA = 10+648.734
 N = 50,194.102
 E = 5,014.672
 $\Delta = 26^\circ 21' 32''$ (RT)
 R = 30.000 m
 T = 7.025 m
 L = 13.801 m
 E = 0.812 m

FOR LEGEND SEE SHEET NO. 14



URS 1701 GOLF ROAD, SUITE 1000 TEL (847) 228-0707
 ROLLING MEADOWS, IL 60008 FAX (847) 228-1115

VILLAGE OF ADDISON
SALT CREEK GREENWAY TRAIL
PLAN & PROFILE
 STA. 10+325 TO STA. 10+700

DATE: 5/10/06 DRAWN BY: MIA&VAP
 DESIGNED BY: MIA CHECKED BY: DDL

REVISIONS		
NO.	NAME	DATE