

SECTION	COUNTY	TOTAL SHEETS	SHEET NO.
02-00090-00-BT	DUPAGE	117	18
STA. TO STA.			
IDOT PROJECT NO. M-8003(222)			
SALT CREEK GREENWAY TRAIL			
CONTRACT NO. 83713			

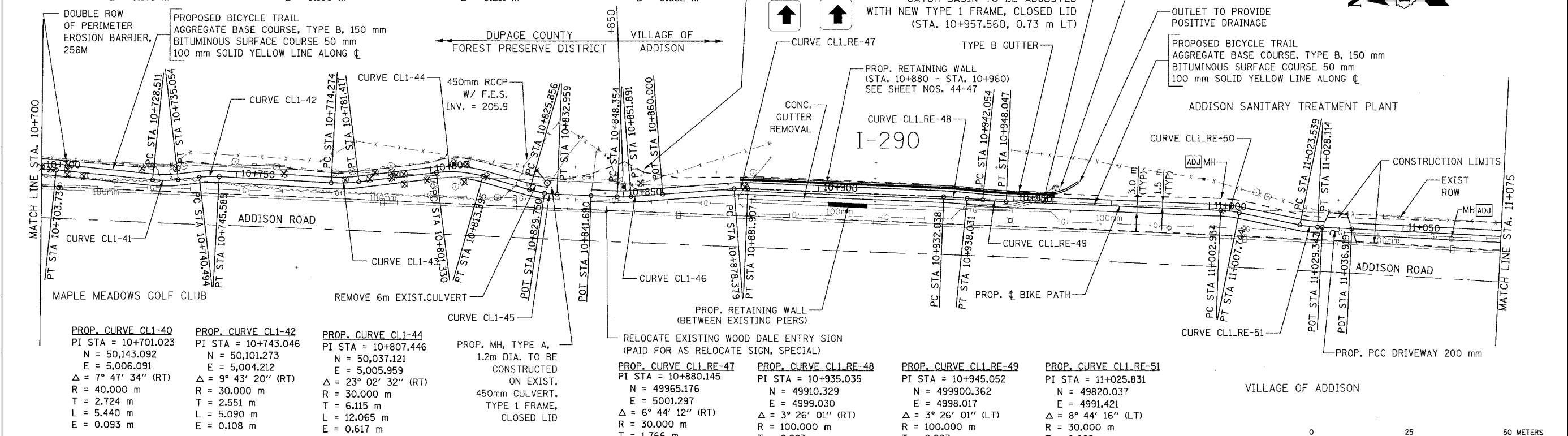
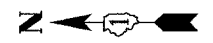
PROP. CURVE CL1-41
 PI STA = 10+731.796
 N = 50,112.475
 E = 5,002.919
 $\Delta = 12^\circ 29' 44''$ (LT)
 R = 30.000 m
 T = 3.284 m
 L = 6.543 m
 E = 0.179 m

PROP. CURVE CL1-43
 PI STA = 10+777.855
 N = 50,066.504
 E = 5,002.304
 $\Delta = 10^\circ 13' 55''$ (LT)
 R = 40.000 m
 T = 3.581 m
 L = 7.143 m
 E = 0.160 m

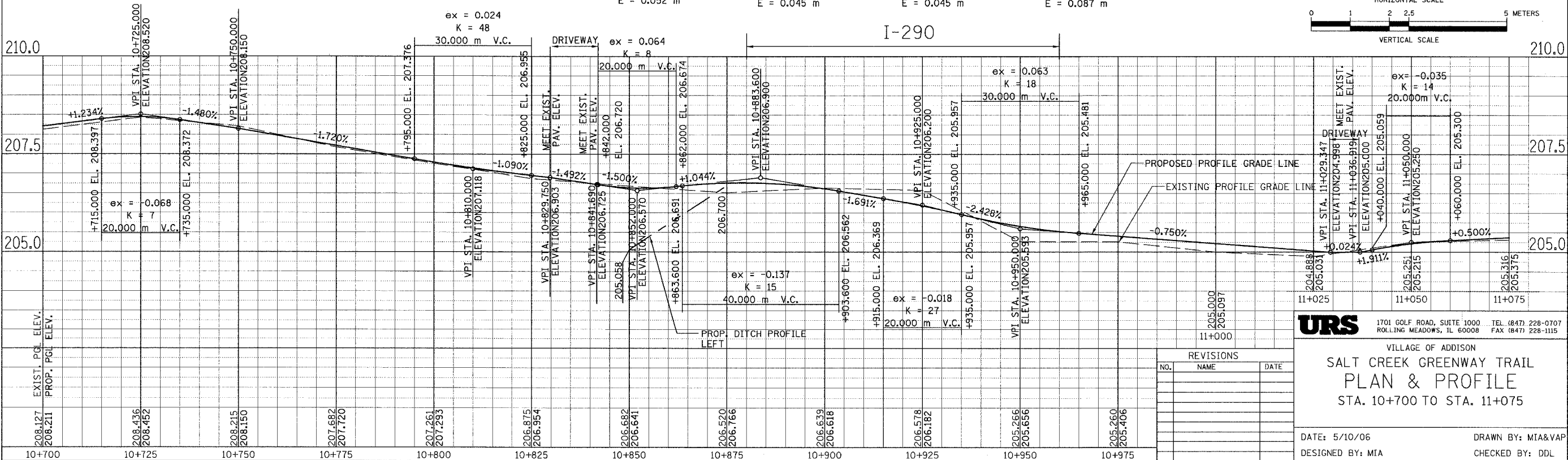
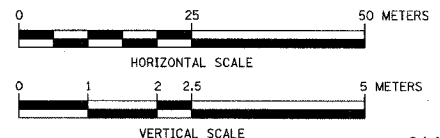
PROP. CURVE CL1-45
 PI STA = 10+829.424
 N = 50,015.830
 E = 4,999.874
 $\Delta = 13^\circ 33' 53''$ (LT)
 R = 30.000 m
 T = 3.568 m
 L = 7.102 m
 E = 0.211 m

PROP. CURVE CL1-46
 PI STA = 10+850.125
 N = 49,995.114
 E = 4,999.010
 $\Delta = 6^\circ 45' 20''$ (LT)
 R = 30.000 m
 T = 1.771 m
 L = 3.537 m
 E = 0.052 m

PROP. CURVE CL1-RE-50
 PI STA = 11+005.344
 N = 49840.119
 E = 4995.527
 $\Delta = 9^\circ 11' 09''$ (RT)
 R = 30.000 m
 T = 2.410 m
 L = 4.810 m
 E = 0.097 m



FOR LEGEND SEE SHEET NO. 14



URS 1701 GOLF ROAD, SUITE 1000 TEL (847) 228-0707
 ROLLING MEADOWS, IL 60008 FAX (847) 228-1115

VILLAGE OF ADDISON
**SALT CREEK GREENWAY TRAIL
 PLAN & PROFILE
 STA. 10+700 TO STA. 11+075**

DATE: 5/10/06 DRAWN BY: MTA&VAP
 DESIGNED BY: MIA CHECKED BY: DDL

REVISIONS		
NO.	NAME	DATE