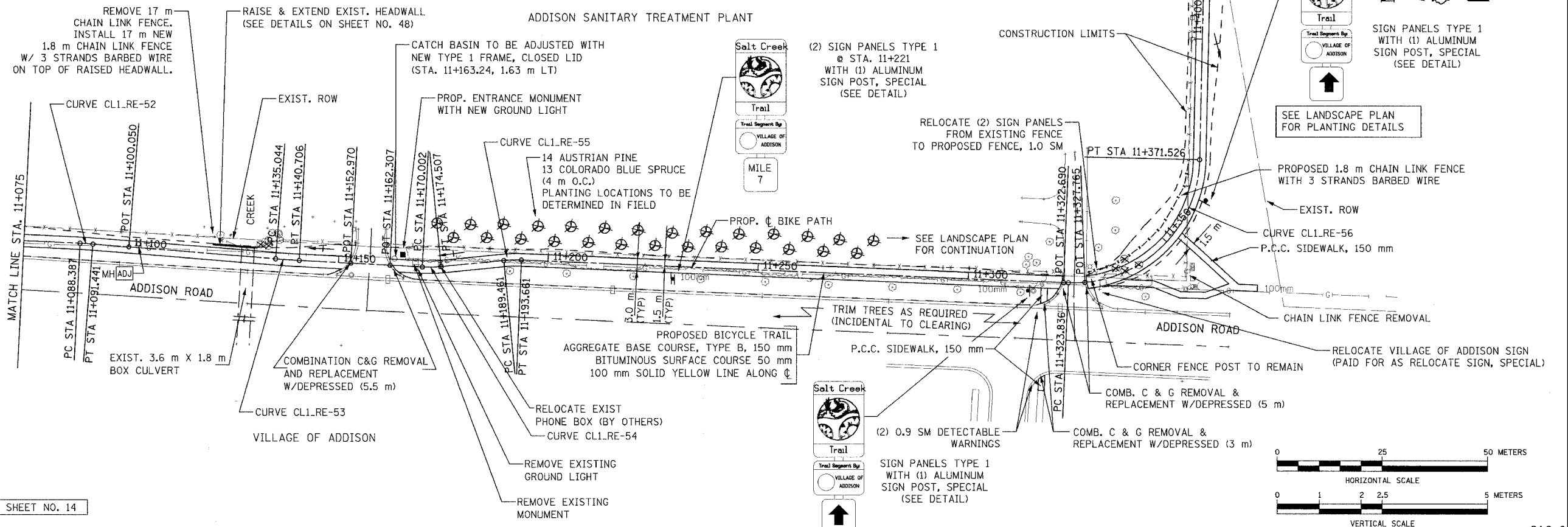
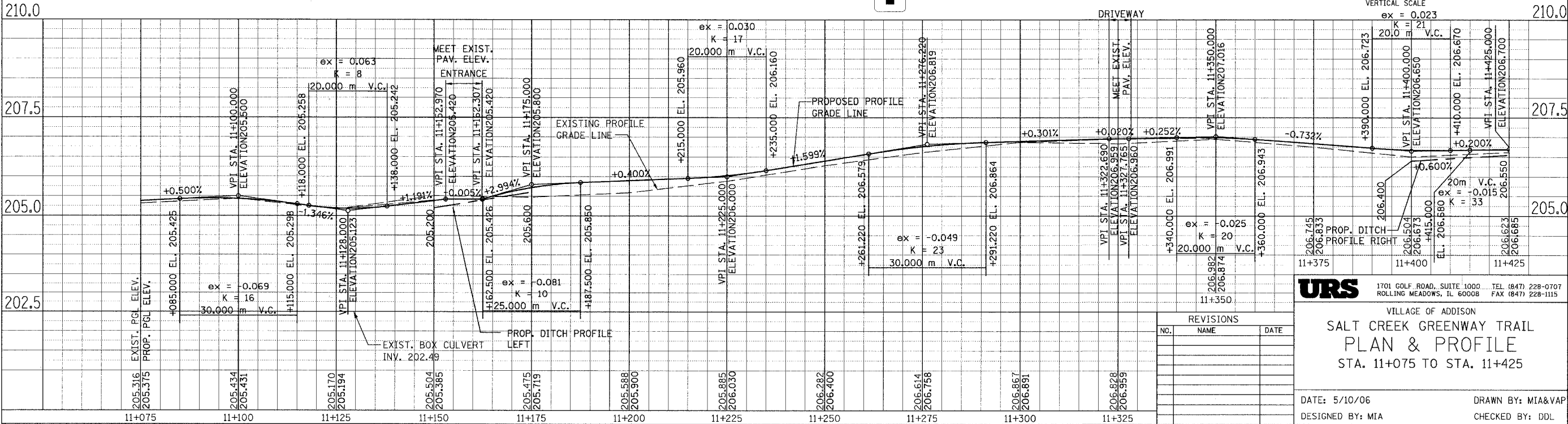


PROP. CURVE CL1.RE-52	PROP. CURVE CL1.RE-53	PROP. CURVE CL1.RE-54	PROP. CURVE CL1.RE-55	PROP. CURVE CL1.RE-56
PI STA = 11+089.914 N = 49756.023 E = 4988.273 $\Delta = 1^\circ 44' 58''$ (RT) R = 100.000 m T = 1.527 m L = 3.053 m E = 0.012 m	PI STA = 11+137.875 N = 49708.214 E = 4984.456 $\Delta = 1^\circ 37' 19''$ (LT) R = 200.000 m T = 2.831 m L = 5.662 m E = 0.020 m	PI STA = 11+172.259 N = 49673.875 E = 4982.691 $\Delta = 8^\circ 36' 11''$ (LT) R = 30.000 m T = 2.257 m L = 4.505 m E = 0.085 m	PI STA = 11+191.564 N = 49654.655 E = 4984.596 $\Delta = 8^\circ 01' 23''$ (RT) R = 30.000 m T = 2.104 m L = 4.201 m E = 0.074 m	PI STA = 11+354.407 N = 49491.944 E = 4977.882 $\Delta = 91^\circ 04' 47''$ (LT) R = 30.000 m T = 30.571 m L = 47.689 m E = 12.832 m

SECTION	COUNTY	TOTAL SHEETS	SHEET NO.
02-00090-00-BT	DUPAGE	117	19
STA. TO STA.			
IDOT PROJECT NO. M-8003(222)			
SALT CREEK GREENWAY TRAIL			
CONTRACT NO. 83713			



FOR LEGEND SEE SHEET NO. 14



**URS** 1701 GOLF ROAD, SUITE 1000 TEL (847) 228-0707  
ROLLING MEADOWS, IL 60008 FAX (847) 228-1115

VILLAGE OF ADDISON  
**SALT CREEK GREENWAY TRAIL  
PLAN & PROFILE  
STA. 11+075 TO STA. 11+425**

NO.	NAME	DATE

DATE: 5/10/06      DRAWN BY: MIA&VAP  
DESIGNED BY: MIA      CHECKED BY: DDL