

PROP. CURVE CL1-66
 PI STA = 11+806.542
 N = 49,271.175
 E = 5,321.790
 $\Delta = 39^\circ 21' 58''$ (LT)
 R = 30.000 m
 T = 10.732 m
 L = 20.612 m
 E = 1.862 m

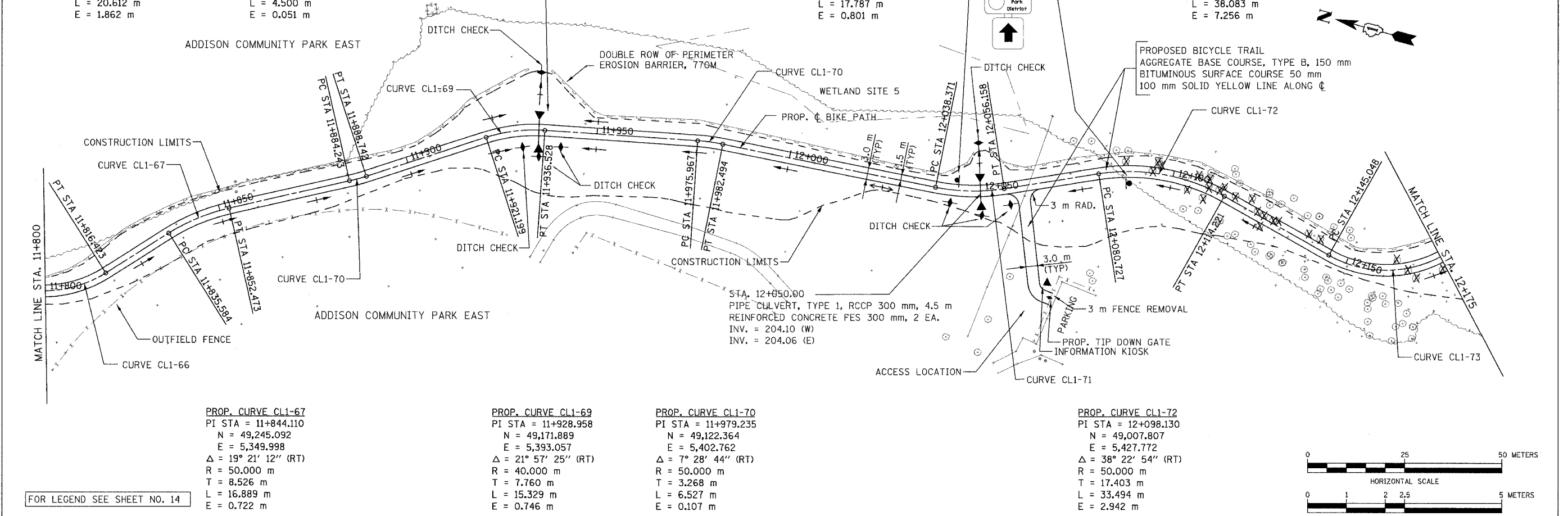
PROP. CURVE CL1-68
 PI STA = 11+886.494
 N = 49,207.487
 E = 5,369.899
 $\Delta = 5^\circ 09' 22''$ (LT)
 R = 50.000 m
 T = 2.251 m
 L = 4.500 m
 E = 0.051 m

STA. 11+935.00
 PIPE CULVERT, TYPE 1, RCCP 300 mm, 4.5 m
 REINFORCED CONCRETE FES, 300 mm, 2 EA.
 INV. = 203.85 (W)
 INV. = 203.82 (E)

PROP. CURVE CL1-71
 PI STA = 12+047.359
 N = 49,054.365
 E = 5,407.051
 $\Delta = 20^\circ 22' 56''$ (LT)
 R = 50.000 m
 T = 8.988 m
 L = 17.787 m
 E = 0.801 m

PROP. CURVE CL1-73
 PI STA = 12+167.138
 N = 48,939.694
 E = 5,410.295
 $\Delta = 72^\circ 43' 57''$ (LT)
 R = 30.000 m
 T = 22.091 m
 L = 38.083 m
 E = 7.256 m

| | | | |
|------------------------------|--------|--------------------|-----------|
| SECTION | COUNTY | TOTAL SHEETS | SHEET NO. |
| 02-00090-00-BT | DUPAGE | 117 | 21 |
| STA. TO STA. | | | |
| IDOT PROJECT NO. M-8003(222) | | | |
| SALT CREEK GREENWAY TRAIL | | CONTRACT NO. 83713 | |

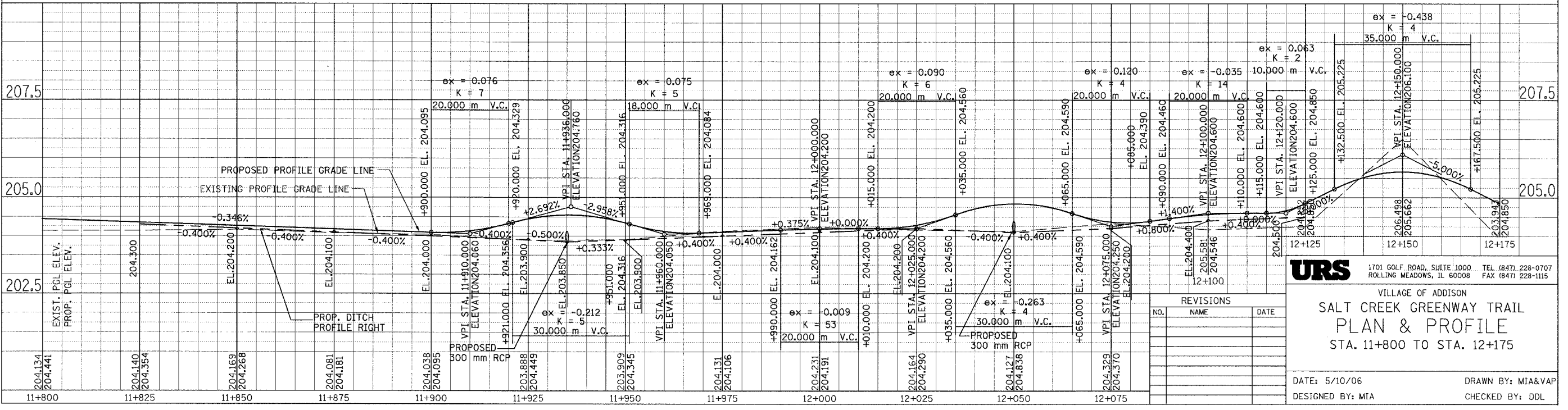
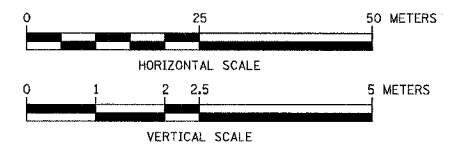


PROP. CURVE CL1-67
 PI STA = 11+844.110
 N = 49,245.092
 E = 5,349.998
 $\Delta = 19^\circ 21' 12''$ (RT)
 R = 50.000 m
 T = 8.526 m
 L = 16.889 m
 E = 0.722 m

PROP. CURVE CL1-69
 PI STA = 11+928.958
 N = 49,171.889
 E = 5,393.057
 $\Delta = 21^\circ 57' 25''$ (RT)
 R = 40.000 m
 T = 7.760 m
 L = 15.329 m
 E = 0.746 m

PROP. CURVE CL1-70
 PI STA = 11+979.235
 N = 49,122.364
 E = 5,402.762
 $\Delta = 7^\circ 28' 44''$ (RT)
 R = 50.000 m
 T = 3.268 m
 L = 6.527 m
 E = 0.107 m

PROP. CURVE CL1-72
 PI STA = 12+098.130
 N = 49,007.807
 E = 5,427.772
 $\Delta = 38^\circ 22' 54''$ (RT)
 R = 50.000 m
 T = 17.403 m
 L = 33.494 m
 E = 2.942 m



URS 1701 GOLF ROAD, SUITE 1000 TEL (847) 228-0707
 ROLLING MEADOWS, IL 60008 FAX (847) 228-1115

VILLAGE OF ADDISON
**SALT CREEK GREENWAY TRAIL
 PLAN & PROFILE**
 STA. 11+800 TO STA. 12+175

DATE: 5/10/06 DRAWN BY: MIA&VAP
 DESIGNED BY: MIA CHECKED BY: DDL

| NO. | NAME | DATE |
|-----|------|------|
| | | |
| | | |