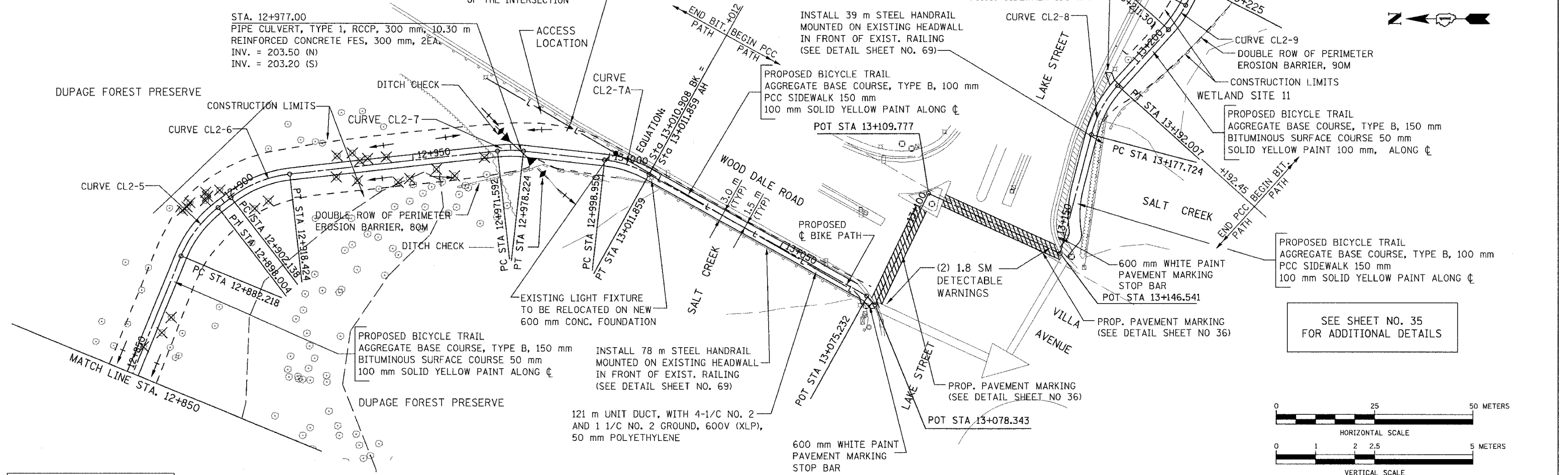
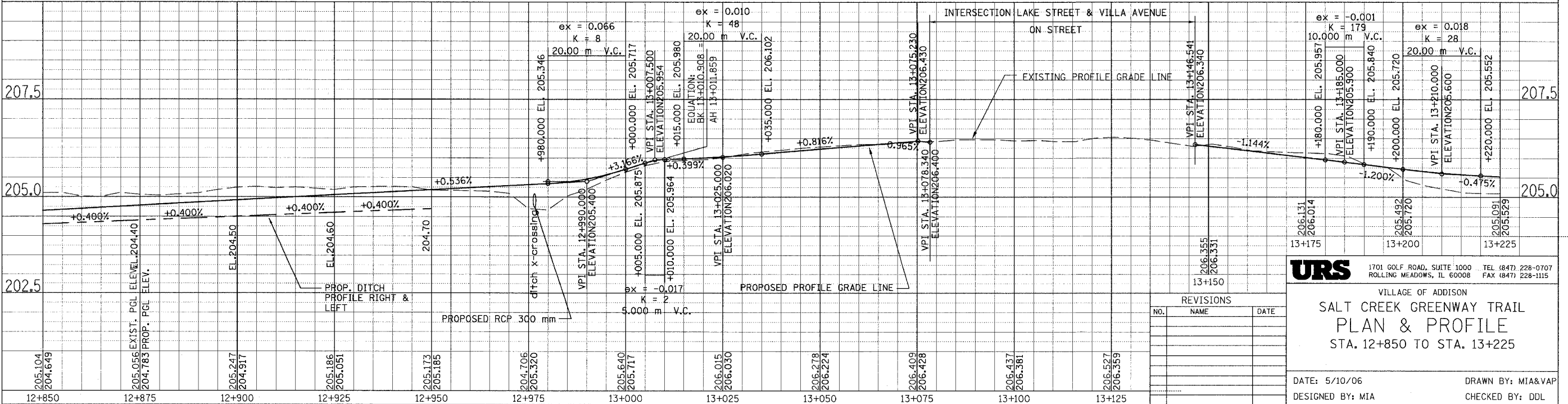


PROP. CURVE CL2-5 PI STA = 12+890.299 N = 48,639.564 E = 5,800.708 $\Delta = 30^\circ 08' 58''$ (RT) R = 30.000 m T = 8.080 m L = 15.786 m E = 1.069 m	PROP. CURVE CL2-6 PI STA = 12+910.487 N = 48,623.249 E = 5,813.226 $\Delta = 31^\circ 06' 18''$ (RT) R = 30.000 m T = 8.349 m L = 16.287 m E = 1.140 m	PROP. CURVE CL2-7 PI STA = 12+974.921 N = 48,558.806 E = 5,820.445 $\Delta = 12^\circ 39' 58''$ (RT) R = 30.000 m T = 3.330 m L = 6.632 m E = 0.184 m	PROP. CURVE CL2-7A PI STA = 13+005.009 N = 48,528.871 E = 5,817.153 $\Delta = 22^\circ 50' 18''$ (RT) R = 30.000 m T = 6.060 m L = 11.958 m E = 0.606 m	PROP. CURVE CL2-8 PI STA = 13+185.003 N = 48,409.225 E = 5,831.298 $\Delta = 27^\circ 16' 37''$ (RT) R = 30.000 m T = 7.279 m L = 14.282 m E = 0.870 m	PROP. CURVE CL2-9 PI STA = 13+215.145 N = 48,388.853 E = 5,853.886 $\Delta = 14^\circ 36' 15''$ (LT) R = 30.000 m T = 3.844 m L = 7.647 m E = 0.245 m
---	---	--	--	---	--

SECTION	COUNTY	TOTAL SHEETS	SHEET NO.
02-00090-00-BT	DUPAGE	117	24
STA. TO STA.			
IDOT PROJECT NO. M-8003(222)			
SALT CREEK GREENWAY TRAIL			
CONTRACT NO. 83713			



FOR LEGEND SEE SHEET NO. 14



URS 1701 GOLF ROAD, SUITE 1000 TEL (847) 228-0707
ROLLING MEADOWS, IL 60008 FAX (847) 228-1115

VILLAGE OF ADDISON
**SALT CREEK GREENWAY TRAIL
PLAN & PROFILE
STA. 12+850 TO STA. 13+225**

REVISIONS		
NO.	NAME	DATE

DATE: 5/10/06 DRAWN BY: MIA&VAP
DESIGNED BY: MIA CHECKED BY: DDL