

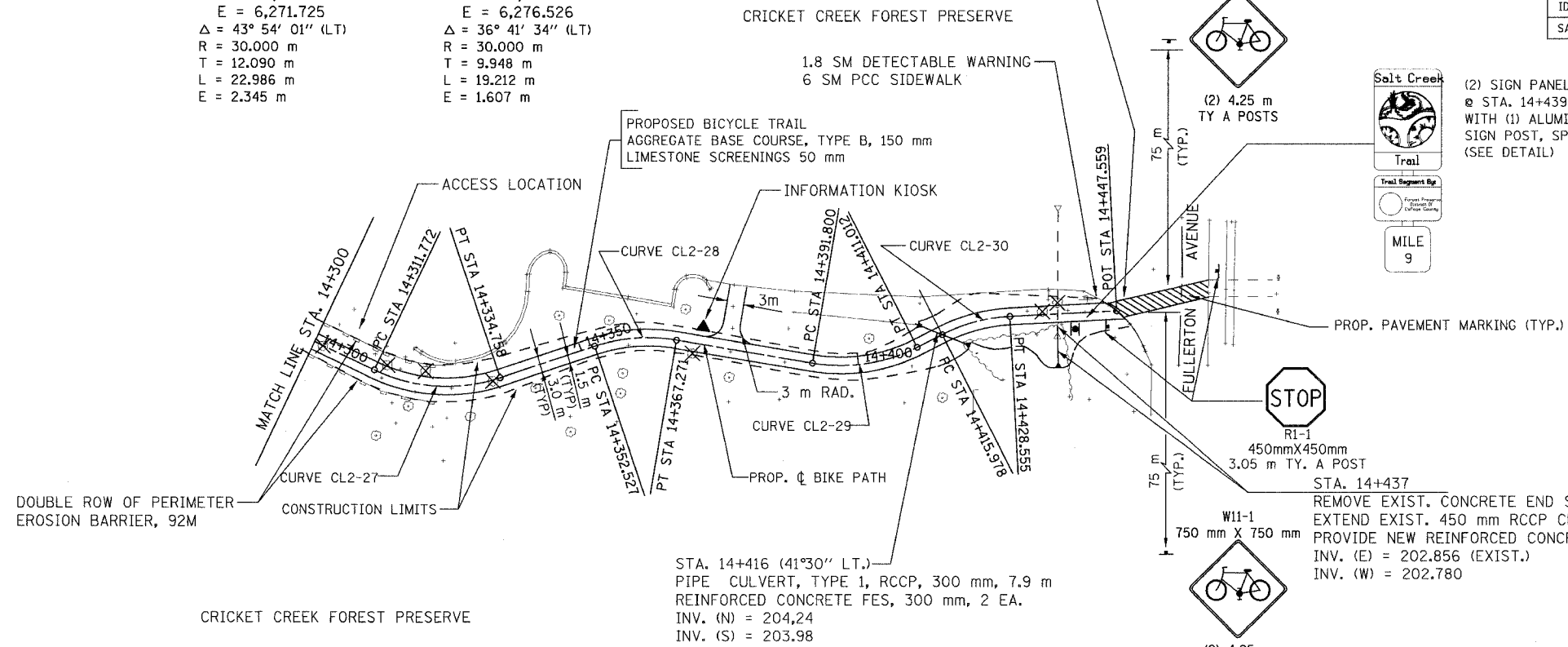
SECTION	COUNTY	TOTAL SHEETS	SHEET NO.
02-00090-00-BT	DUPAGE	117	28
STA.	TO STA.		
IDOT PROJECT NO. M-8003(222)			
SALT CREEK GREENWAY TRAIL			

CONTRACT NO. 83713

PROP. CURVE CL2-27  
 PI STA = 14+323.862  
 N = 47,565.026  
 E = 6,271.725  
 $\Delta = 43^\circ 54' 01''$  (LT)  
 R = 30.000 m  
 T = 12.090 m  
 L = 22.986 m  
 E = 2.345 m

PROP. CURVE CL2-29  
 PI STA = 14+401.748  
 N = 47,488.168  
 E = 6,276.526  
 $\Delta = 36^\circ 41' 34''$  (LT)  
 R = 30.000 m  
 T = 9.948 m  
 L = 19.212 m  
 E = 1.607 m

BEGIN OMISSION  
 STA. 14+447.559

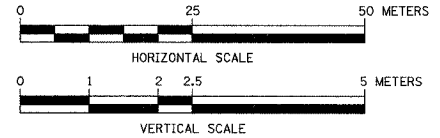


(2) SIGN PANELS TYPE 1  
 @ STA. 14+439  
 WITH (1) ALUMINUM  
 SIGN POST, SPECIAL  
 (SEE DETAIL)



RI-1  
 450mmX450mm  
 3.05 m TY. A POST  
 STA. 14+437

REMOVE EXIST. CONCRETE END SECTION  
 EXTEND EXIST. 450 mm RCCP CULVERT (4.5 m)  
 PROVIDE NEW REINFORCED CONCRETE FES 450 mm 1EA.  
 INV. (E) = 202.856 (EXIST.)  
 INV. (W) = 202.780

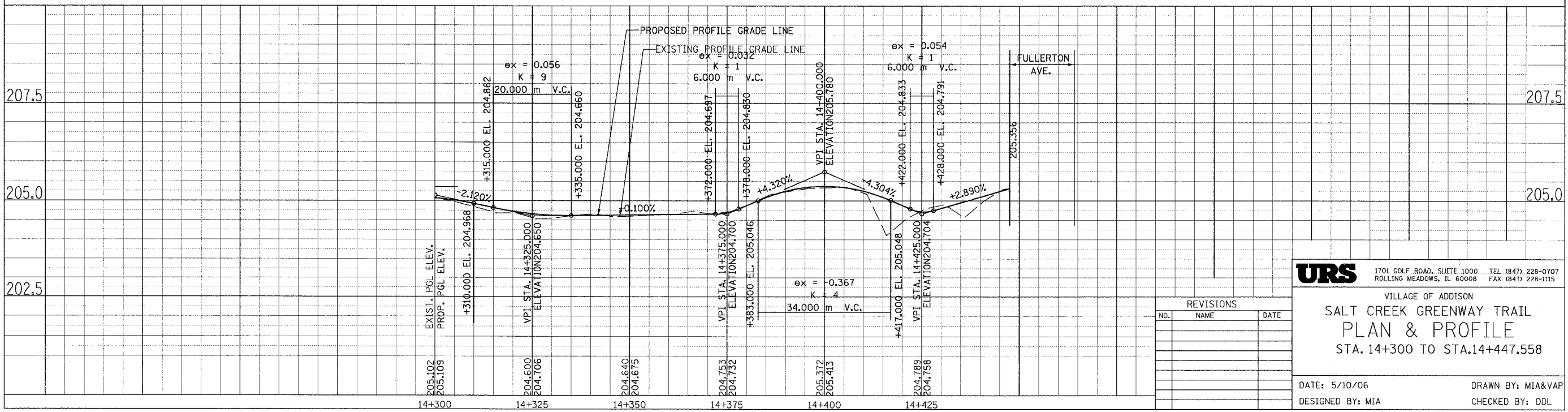


PROP. CURVE CL2-28  
 PI STA = 14+360.050  
 N = 47,529.573  
 E = 6,283.580  
 $\Delta = 28^\circ 09' 32''$  (RT)  
 R = 30.000 m  
 T = 7.524 m  
 L = 14.744 m  
 E = 0.929 m

PROP. CURVE CL2-30  
 PI STA = 14+422.360  
 N = 47,469.196  
 E = 6,286.203  
 $\Delta = 24^\circ 01' 10''$  (RT)  
 R = 30.000 m  
 T = 6.382 m  
 L = 12.577 m  
 E = 0.671 m

STA. 14+416 ( $41^\circ 30''$  LT.)  
 PIPE CULVERT, TYPE 1, RCCP, 300 mm, 7.9 m  
 REINFORCED CONCRETE FES, 300 mm, 2 EA.  
 INV. (N) = 204.24  
 INV. (S) = 203.98

FOR LEGEND SEE SHEET NO. 14



**URS** 1701 GOLF ROAD, SUITE 1000 TEL (847) 228-0707  
 ROLLING MEADOWS, IL 60008 FAX (847) 228-1115

VILLAGE OF ADDISON  
**SALT CREEK GREENWAY TRAIL**  
**PLAN & PROFILE**  
 STA. 14+300 TO STA.14+447.558

DATE: 5/10/06 DRAWN BY: MIA&VAP  
 DESIGNED BY: MIA CHECKED BY: DDL

REVISIONS		
NO.	NAME	DATE