

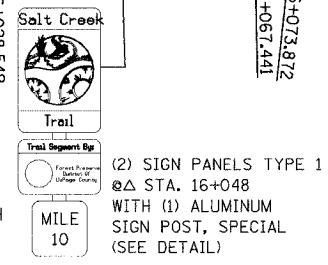
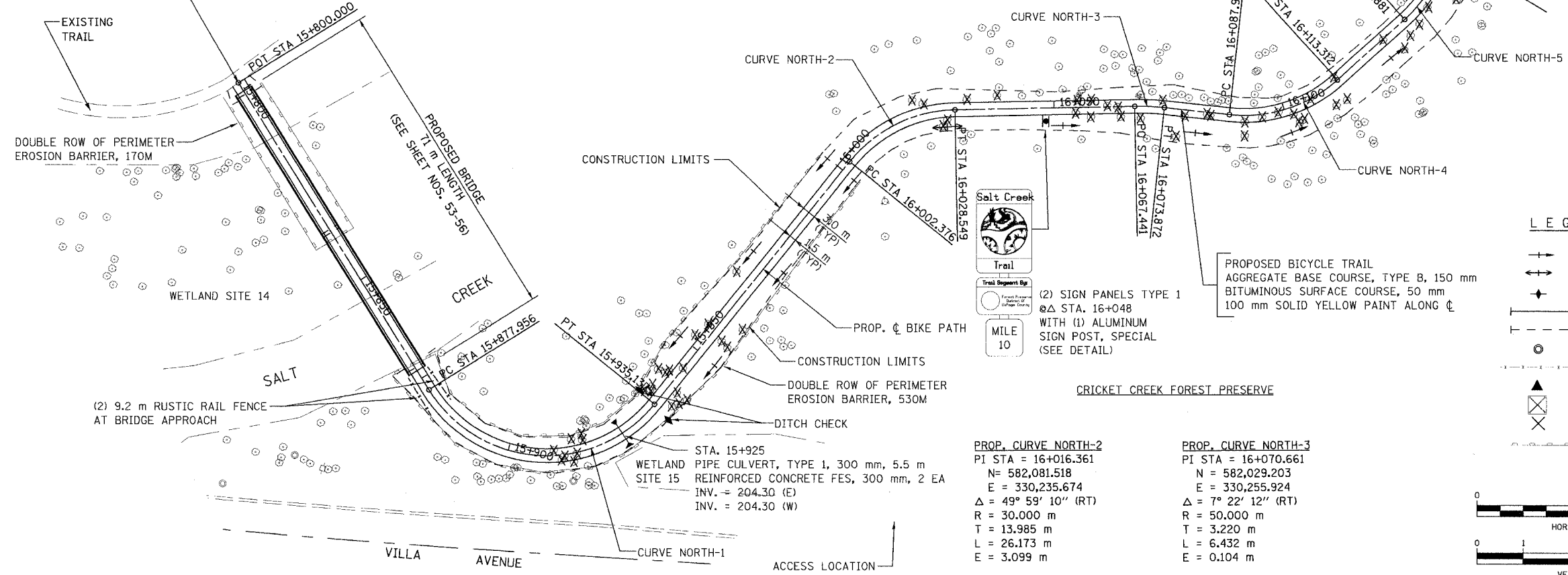
SECTION	COUNTY	TOTAL SHEETS	SHEET NO.
02-00090-00-BT	DUPAGE	117	30
STA.	TO STA.		
IDOT PROJECT NO. M-8003(222)			
SALT CREEK GREENWAY TRAIL			
CONTRACT NO. 83713			

END OMISSION
BEGIN NEW CONSTRUCTION
STA. 15+800.00

PROP. CURVE NORTH-1
PI STA = 15+920.176
N = 582,121.408
E = 330,118.853
 $\Delta = 109^\circ 12' 25''$ (LT)
R = 30.000 m
T = 42.220 m
L = 57.181 m
E = 21.793 m

PROP. CURVE NORTH-4
PI STA = 16+101.460
N = 581,999.283
E = 330,263.267
 $\Delta = 48^\circ 21' 51''$ (LT)
R = 30.000 m
T = 13.471 m
L = 25.323 m
E = 2.886 m

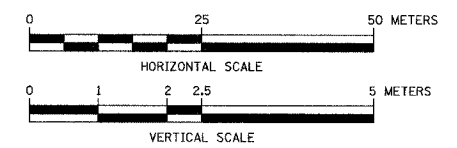
PROP. CURVE NORTH-5
PI STA = 16+137.448
N = 581,981.717
E = 330,296.520
 $\Delta = 17^\circ 18' 48''$ (LT)
R = 30.000 m
T = 4.567 m
L = 9.065 m
E = 0.346 m



PROPOSED BICYCLE TRAIL
AGGREGATE BASE COURSE, TYPE B, 150 mm
BITUMINOUS SURFACE COURSE, 50 mm
100 mm SOLID YELLOW PAINT ALONG ϕ

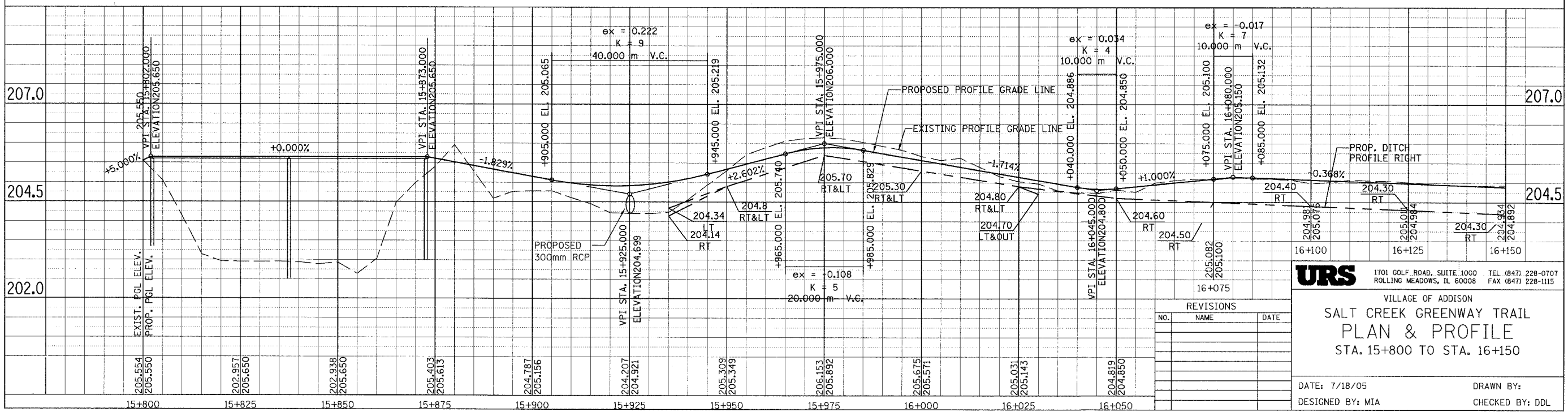
LEGEND

+	SWALE TIP
+	DITCH SUMMIT
+	DITCH CHECK
+	PROPOSED CULVERT
- - -	EXISTING CULVERT
o	EXISTING MANHOLE
- - -	EXISTING FENCE
▲	FLARED END SECTION
⊗	INLET AND PIPE PROTECTION
⊗	TREE REMOVAL
- - -	PERIMETER EROSION BARRIER



PROP. CURVE NORTH-2
PI STA = 16+016.361
N = 582,081.518
E = 330,235.674
 $\Delta = 49^\circ 59' 10''$ (RT)
R = 30.000 m
T = 13.985 m
L = 26.173 m
E = 3.099 m

PROP. CURVE NORTH-3
PI STA = 16+070.661
N = 582,029.203
E = 330,255.924
 $\Delta = 7^\circ 22' 12''$ (RT)
R = 50.000 m
T = 3.220 m
L = 6.432 m
E = 0.104 m



URS 1701 GOLF ROAD, SUITE 1000 TEL (847) 228-0707
ROLLING MEADOWS, IL 60008 FAX (847) 228-1115

VILLAGE OF ADDISON
**SALT CREEK GREENWAY TRAIL
PLAN & PROFILE
STA. 15+800 TO STA. 16+150**

DATE: 7/18/05
DESIGNED BY: MIA

DRAWN BY:
CHECKED BY: DDL

REVISIONS	
NO.	DATE