

SECTION	COUNTY	TOTAL SHEETS	SHEET NO.
02-00034-00-BT	DUPAGE	108	15
STA. TO STA.			
IDOT PROJECT NO. M-8003(216)			
SALT CREEK GREENWAY TRAIL			

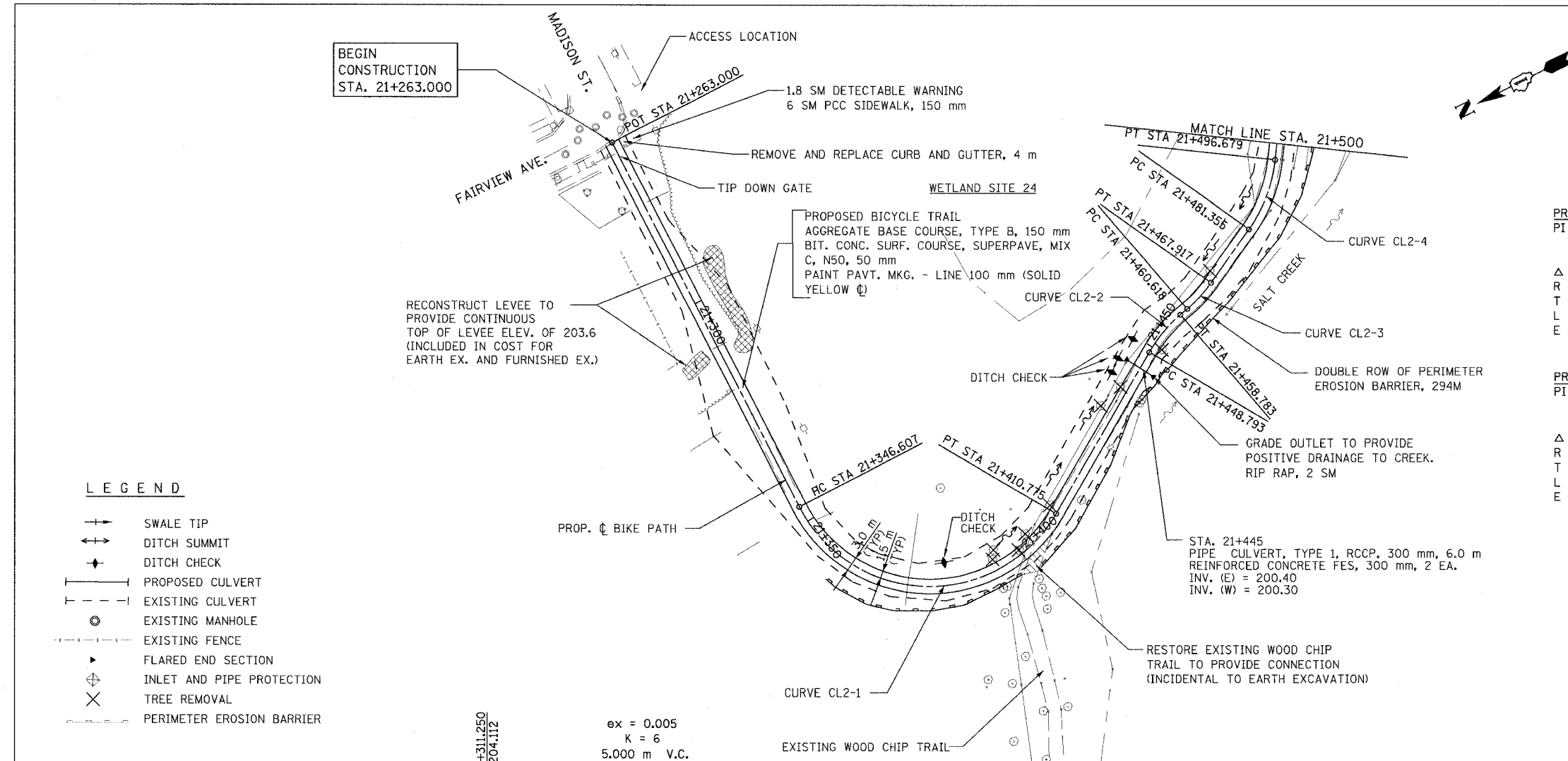
CONTRACT NO. 83714

**PROP. CURVE CL2-1**  
 PI STA = 21+401.350  
 N = 42,734.785  
 E = 7,482.362  
 $\Delta = 122^\circ 33' 12''$  (LT)  
 R = 30,000 m  
 T = 54.743 m  
 L = 64.169 m  
 E = 32.424 m

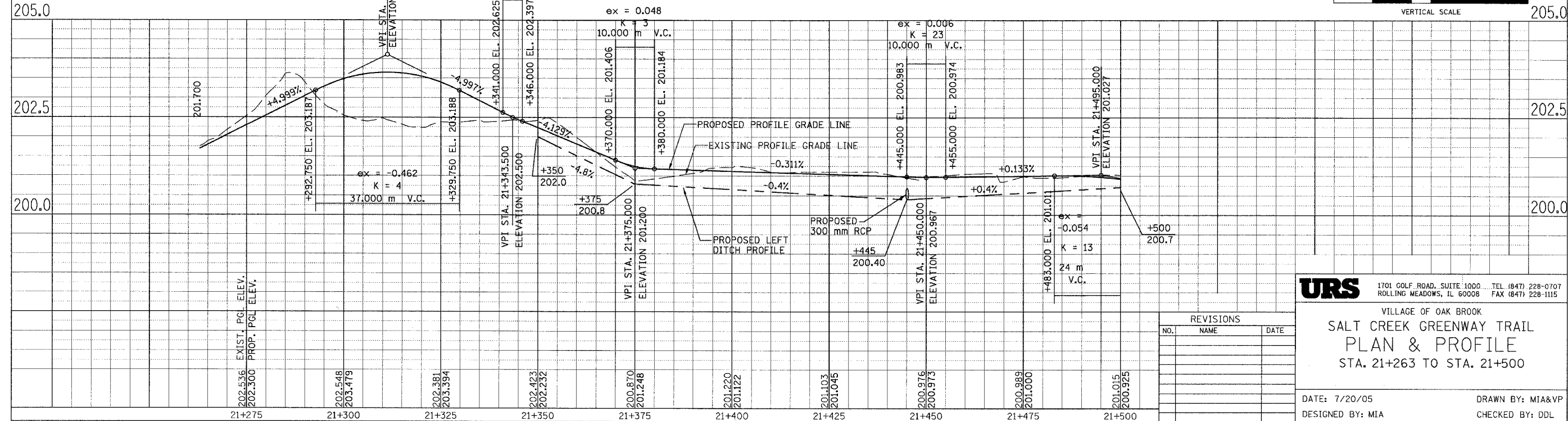
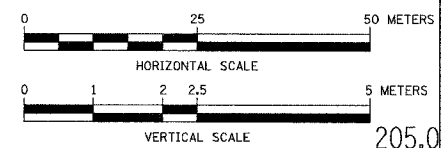
**PROP. CURVE CL2-2**  
 PI STA = 21+453.835  
 N = 42,648.446  
 E = 7,528.306  
 $\Delta = 19^\circ 04' 49''$  (RT)  
 R = 30,000 m  
 T = 5.042 m  
 L = 9.990 m  
 E = 0.421 m

**PROP. CURVE CL2-3**  
 PI STA = 21+464.285  
 N = 42,638.030  
 E = 7,529.945  
 $\Delta = 13^\circ 56' 23''$  (LT)  
 R = 30,000 m  
 T = 3.668 m  
 L = 7.299 m  
 E = 0.223 m

**PROP. CURVE CL2-4**  
 PI STA = 21+489.188  
 N = 42,615.053  
 E = 7,539.640  
 $\Delta = 29^\circ 15' 58''$  (LT)  
 R = 30,000 m  
 T = 7.833 m  
 L = 15.324 m  
 E = 1.006 m



- LEGEND**
- +— SWALE TIP
  - +— DITCH SUMMIT
  - +— DITCH CHECK
  - +— PROPOSED CULVERT
  - +— EXISTING CULVERT
  - +— EXISTING MANHOLE
  - +— EXISTING FENCE
  - +— FLARED END SECTION
  - +— INLET AND PIPE PROTECTION
  - +— TREE REMOVAL
  - +— PERIMETER EROSION BARRIER



**URS** 1701 GOLF ROAD, SUITE 1000 ... TEL (847) 228-0707  
 ROLLING MEADOWS, IL 60008 FAX (847) 228-1115

VILLAGE OF OAK BROOK  
**SALT CREEK GREENWAY TRAIL  
 PLAN & PROFILE**  
 STA. 21+263 TO STA. 21+500

DATE: 7/20/05 DRAWN BY: MIA&VP  
 DESIGNED BY: MIA CHECKED BY: DDL

REVISIONS		
NO.	NAME	DATE