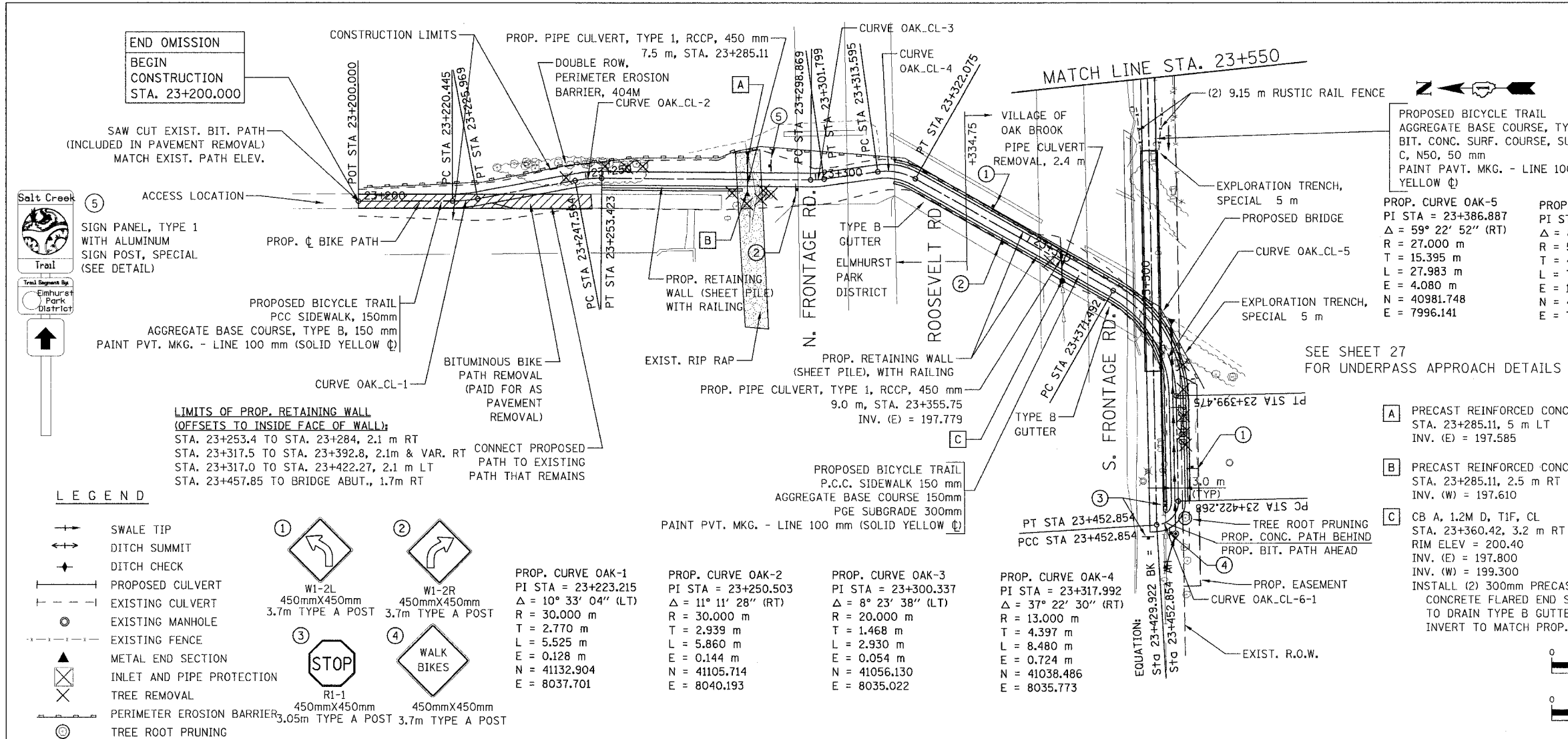


SECTION	COUNTY	TOTAL SHEETS	SHEET NO.
02-00034-00-BT	DUPAGE	108	21
STA.	TO STA.		
IDOT PROJECT NO. M-8003(216)			
SALT CREEK GREENWAY TRAIL			
CONTRACT NO. 83714			



PROPOSED BICYCLE TRAIL
 AGGREGATE BASE COURSE, TYPE B, 150 mm
 BIT. CONC. SURF. COURSE, SUPERPAVE, MIX C, N50, 50 mm
 PAINT PAVT. MKG. - LINE 100 mm (SOLID YELLOW ☉)

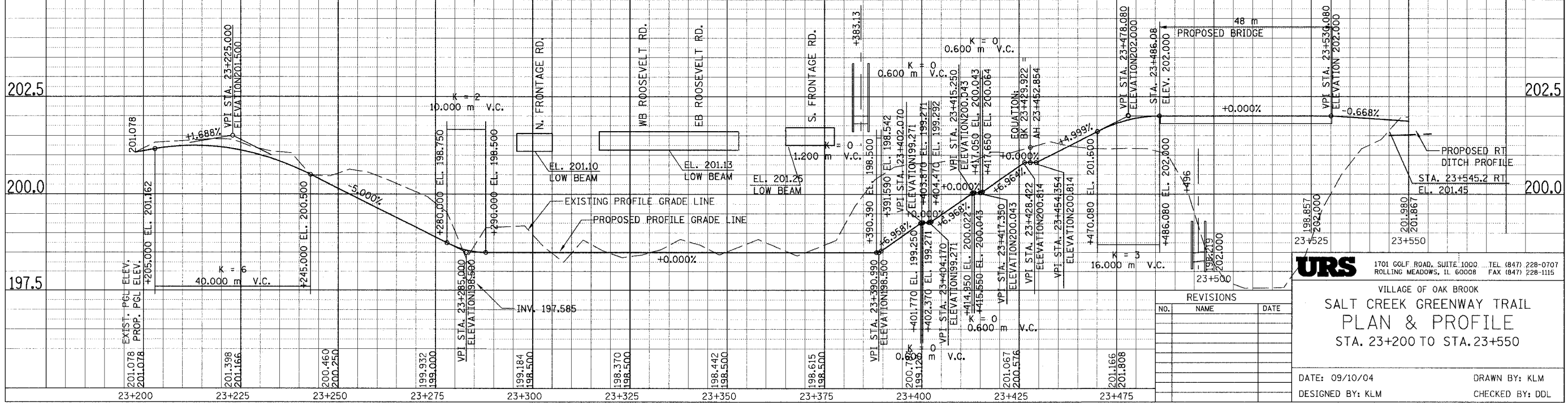
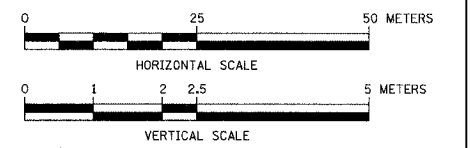
PROP. CURVE OAK-5
 PI STA = 23+386.887
 $\Delta = 59^\circ 22' 52''$ (RT)
 R = 27,000 m
 T = 15,395 m
 L = 27,983 m
 E = 4,080 m
 N = 40981.748
 E = 7996.141

PROP. CURVE OAK-6-1
 PI STA = 23+427.072
 $\Delta = 87^\circ 42' 19''$ (RT)
 R = 5,000 m
 T = 4,804 m
 L = 7,654 m
 E = 1,934 m
 N = 40984.984
 E = 7953.271

PROP. CURVE OAK-6-2
 PI STA = 23+452.854
 $\Delta = 0^\circ 00' 08''$ (RT)
 N = 40989.785
 E = 7953.441

SEE SHEET 27 FOR UNDERPASS APPROACH DETAILS

- A PRECAST REINFORCED CONCRETE FES, 450 mm
 STA. 23+285.11, 5 m LT
 INV. (E) = 197.585
 - B PRECAST REINFORCED CONCRETE FES, 450 mm
 STA. 23+285.11, 2.5 m RT
 INV. (W) = 197.610
 - C CB A, 1.2M D, TIF, CL
 STA. 23+360.42, 3.2 m RT
 RIM ELEV = 200.40
 INV. (E) = 197.800
 INV. (W) = 199.300
- INSTALL (2) 300mm PRECAST REINF. CONCRETE FLARED END SECTIONS TO DRAIN TYPE B GUTTER. INVERT TO MATCH PROP. GUTTER EL.



URS 1701 GOLF ROAD, SUITE 1000 TEL (847) 228-0707
 ROLLING MEADOWS, IL 60008 FAX (847) 228-1115

VILLAGE OF OAK BROOK
 SALT CREEK GREENWAY TRAIL
 PLAN & PROFILE
 STA. 23+200 TO STA. 23+550

NO.	NAME	DATE

DATE: 09/10/04 DESIGNED BY: KLM DRAWN BY: KLM
 CHECKED BY: DDL