

D PRECAST REINFORCED CONCRETE FES, 300 mm
 STA. 23+716.080, 2.7 m RT
 INV. = 200.370

SECTION	COUNTY	TOTAL SHEETS	SHEET NO.
02-00034-00-BT	DUPAGE	108	22
STA. TO STA.			
IDOT PROJECT NO. M-8003(216)			
SALT CREEK GREENWAY TRAIL			

CONTRACT NO. 83714



3 m WIDE, 300 mm WHITE THERMOPLASTIC PAVEMENT MARKING WITH 300 mm, 45° DIAGONALS @ 600 mm C-C
 600 mm WHITE PAINT PAVEMENT MARKING STOP BAR
 CONCRETE CURB REMOVAL, 16 m
 ADJUST VALVE BOX
 FIRE HYDRANT TO BE MOVED TO STA. 23+803, 2.5 m LT OF C

PROP. CURVE OAK-11
 PI STA = 23+834.342
 $\Delta = 15^\circ 52' 47''$ (RT)
 R = 50,000 m
 T = 6,974 m
 L = 13,858 m
 E = 0.484 m
 N = 40961.019
 E = 8333.185

PROP. CURVE OAK-12
 PI STA = 23+849.839
 $\Delta = 16^\circ 18' 54''$ (LT)
 R = 30,000 m
 T = 4,300 m
 L = 8,543 m
 E = 0.307 m
 N = 40955.422
 E = 8347.732

(2) SIGN PANELS, TYPE 1 WITH ALUMINUM SIGN POST, SPECIAL (SEE DETAIL)

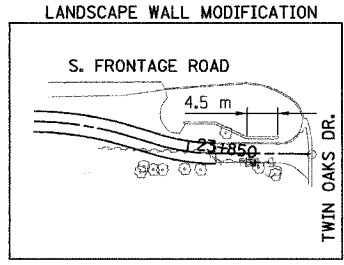


33 m PROPOSED M-15.30 CURB & GUTTER STA. 23+575.8 TO STA. 23+609.3 ABUTTING EXISTING EDGE OF PAVEMENT GRADE GUTTER TO DRAIN

PROP. CURVE OAK-7
 PI STA = 23+564.419
 $\Delta = 10^\circ 01' 49''$ (RT)
 R = 60,000 m
 T = 5,265 m
 L = 10,504 m
 E = 0.231 m
 N = 40981.388
 E = 8064.690

PROP. CURVE OAK-8
 PI STA = 23+589.303
 $\Delta = 17^\circ 28' 43''$ (LT)
 R = 30,000 m
 T = 4,612 m
 L = 9,152 m
 E = 0.352 m
 N = 40975.216
 E = 8088.823

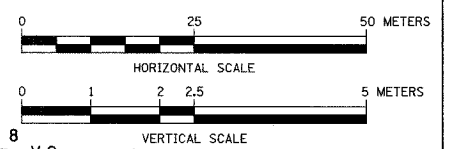
PROP. CURVE OAK-9
 PI STA = 23+633.635
 $\Delta = 7^\circ 09' 54''$ (RT)
 R = 100,000 m
 T = 6,261 m
 L = 12,505 m
 E = 0.196 m
 N = 40977.642
 E = 8133.161



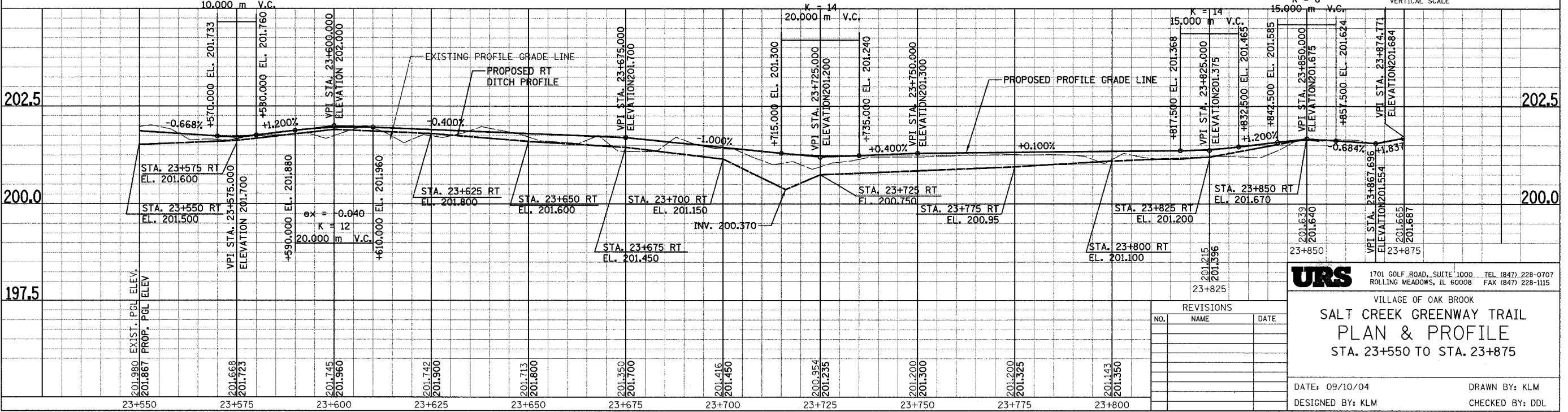
NOTE:
 LANDSCAPE WALL MODIFICATION:
 -SAWCUT 600 mm BELOW TOP OF WALL FOR 4.5 m LENGTH OF WALL AS INDICATED AND REMOVE.
 -SALVAGE TOP OF WALL SLAB/CAP AND REMOUNT ON TOP OF NEW WALL ELEV.
 -SALVAGE LIGHT FIXTURE AND REINSTALL ON TOP OF NEW WALL ELEV.

PROP. CURVE OAK-10
 PI STA = 23+707.008
 $\Delta = 1^\circ 07' 54''$ (RT)
 R = 400,000 m
 T = 3,950 m
 L = 7,901 m
 E = 0.020 m
 N = 40972.481
 E = 8206.368

TRANSITION PATH FROM 3m WIDTH TO 2.4m WIDTH FROM STA. 23+841.2 TO STA. 23+845.5



FOR LEGEND SEE SHEET NO. 21



URS 1701 GOLF ROAD, SUITE 1000 TEL (847) 228-0707 ROLLING MEADOWS, IL 60008 FAX (847) 228-1115

VILLAGE OF OAK BROOK
SALT CREEK GREENWAY TRAIL
PLAN & PROFILE
 STA. 23+550 TO STA. 23+875

REVISIONS		
NO.	NAME	DATE

DATE: 09/10/04
 DESIGNED BY: KLM
 DRAWN BY: KLM
 CHECKED BY: DDL