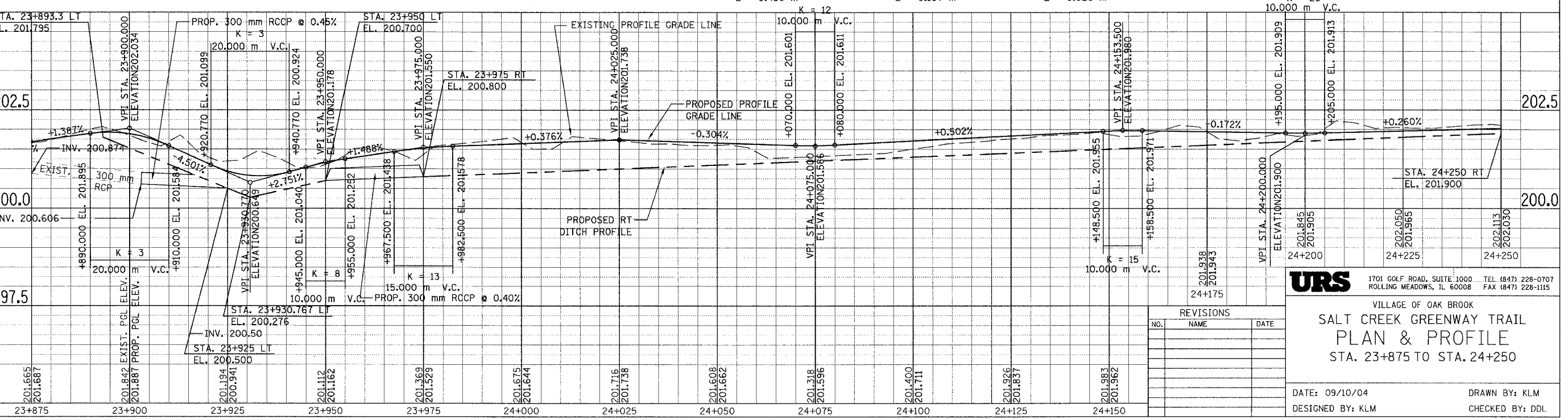
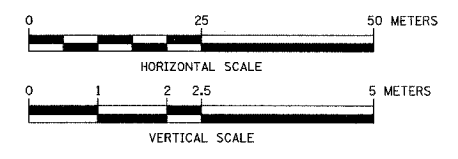
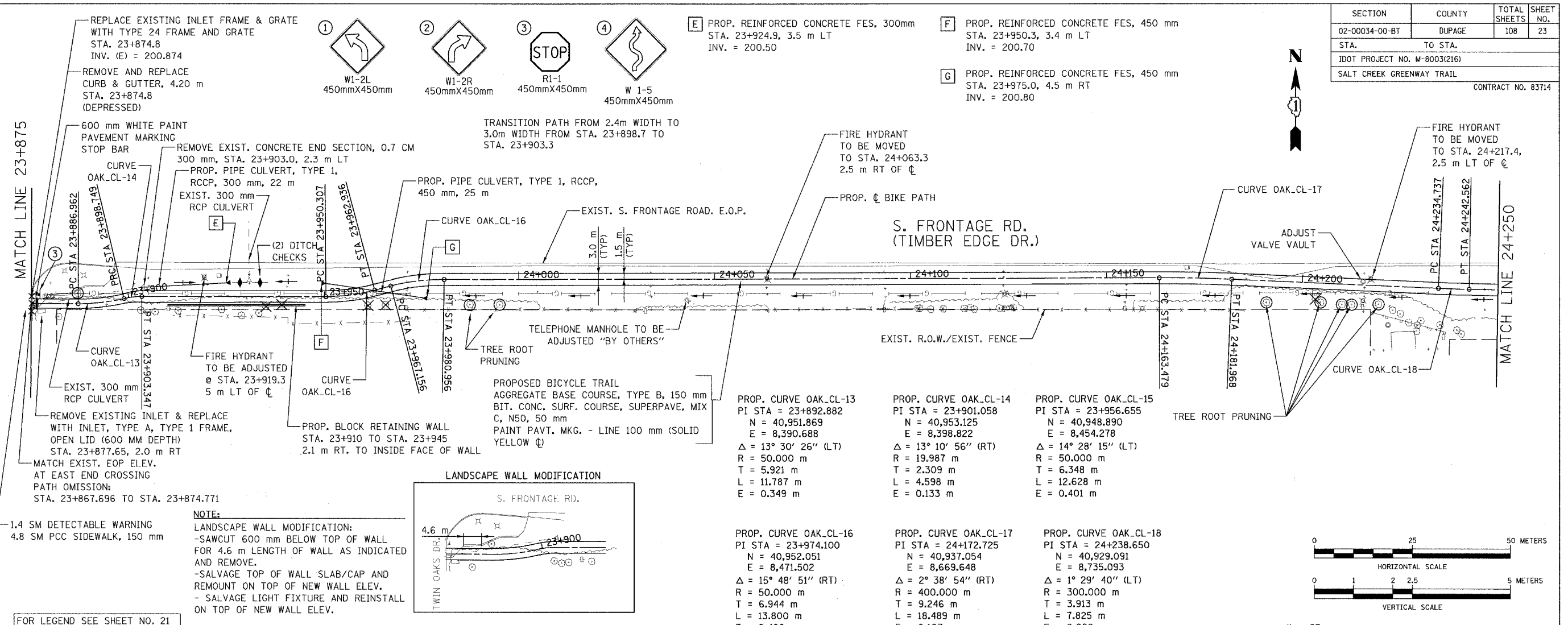


SECTION	COUNTY	TOTAL SHEETS	SHEET NO.
02-00034-00-BT	DUPAGE	108	23
STA. TO STA.			
IDOT PROJECT NO. M-8003(216)			
SALT CREEK GREENWAY TRAIL			
CONTRACT NO. 83714			



URS 1701 GOLF ROAD, SUITE 1000 TEL (847) 228-0707
 ROLLING MEADOWS, IL 60008 FAX (847) 228-1115

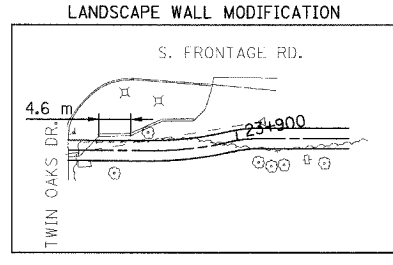
VILLAGE OF OAK BROOK
**SALT CREEK GREENWAY TRAIL
 PLAN & PROFILE
 STA. 23+875 TO STA. 24+250**

REVISIONS	
NO.	DATE

DATE: 09/10/04 DRAWN BY: KLM
 DESIGNED BY: KLM CHECKED BY: DDL

FOR LEGEND SEE SHEET NO. 21

NOTE:
 LANDSCAPE WALL MODIFICATION:
 -SAWCUT 600 mm BELOW TOP OF WALL FOR 4.6 m LENGTH OF WALL AS INDICATED AND REMOVE.
 -SALVAGE TOP OF WALL SLAB/CAP AND REMOUNT ON TOP OF NEW WALL ELEV.
 - SALVAGE LIGHT FIXTURE AND REINSTALL ON TOP OF NEW WALL ELEV.



TRANSITION PATH FROM 2.4m WIDTH TO 3.0m WIDTH FROM STA. 23+898.7 TO STA. 23+903.3

- E** PROP. REINFORCED CONCRETE FES, 300mm STA. 23+924.9, 3.5 m LT INV. = 200.50
- F** PROP. REINFORCED CONCRETE FES, 450 mm STA. 23+950.3, 3.4 m LT INV. = 200.70
- G** PROP. REINFORCED CONCRETE FES, 450 mm STA. 23+975.0, 4.5 m RT INV. = 200.80

- 1** W1-2L 450mmX450mm
- 2** W1-2R 450mmX450mm
- 3** R1-1 450mmX450mm
- 4** W 1-5 450mmX450mm

MATCH LINE 23+875

MATCH LINE 24+250