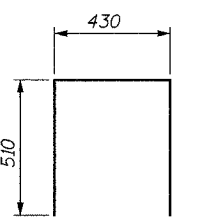
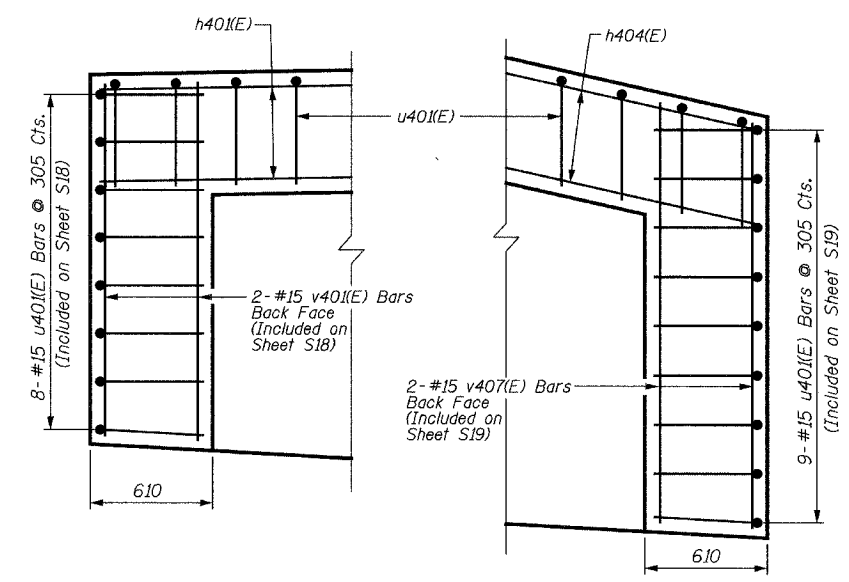


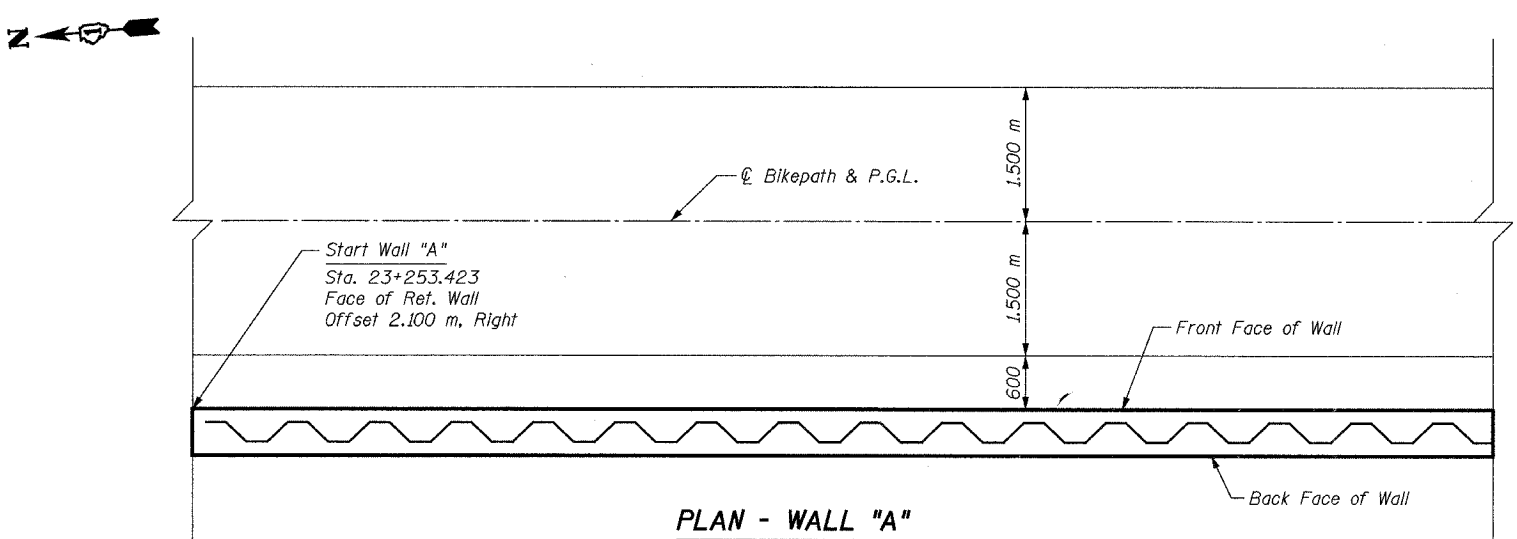
ELEVATION - WALL "A"
(Sta. 23+253.423 to Sta. 23+268)



BAR u40(E)



NORTH END SOUTH END
END CAP WALL DETAILS - WALL "A"



PLAN - WALL "A"
(Sta. 23+253.423 to Sta. 23+268)
(Reinforcement Omitted for Clarity)

BILL OF MATERIAL

Bar	No.	Size	Length	Shape
h40(E)	13	#15	6.48 m	—
h402(E)	11	#15	8.64 m	—
u40(E)	57	#15	1.45 m	□
v40(E)	11	#15	1.33 m	—
v402(E)	11	#15	1.56 m	—
v403(E)	14	#15	1.82 m	—
v404(E)	13	#15	2.08 m	—
Concrete Structures		Cu. M	11.4	
Reinforcement Bars, Epoxy Coated		kg	570	
Structure Excavation		Cu. M	14	
Permanent Steel Sheet Piling		Sq. M	58	
Pipe Handrail		Meter	15	

NOTES:

- Use h(E) bars for even distribution over face of wall.
- Use v(E) bars as necessary in field to fit.
- Minimum lap for #15 bar = 640 mm.
- All exposed edges of concrete shall have a 20 mm chamfer unless shown otherwise.
- For minimum effective section modulus properties for sheet piling sections, refer to special provision for Permanent Steel Sheet Piling.
- Work this sheet with Sheet S19.
- Bars designated (E) shall be epoxy coated.
- All dimensions are in millimeters (mm) unless otherwise noted.
- For Typical Section thru Wall, see Sheet S19.

SHEET S18 of S33

REVISIONS		NAME	DATE

URS 1701 GOLF ROAD, SUITE 1000 TEL (847) 228-0707
ROLLING MEADOWS, IL 60008 FAX (847) 228-1115

VILLAGE OF OAKBROOK
SALT CREEK GREENWAY TRAIL
WALL "A", STA. 23+253.423 TO
STA. 23+268, PLAN & ELEVATION

DATE: 06/30/05
DESIGNED BY: MDS

DRAWN BY: MDS
CHECKED BY: GAT