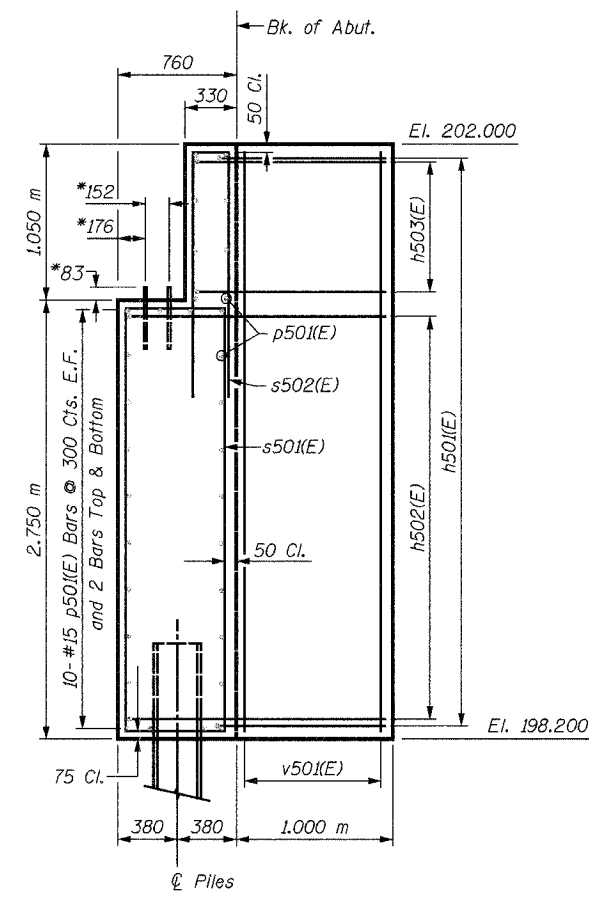
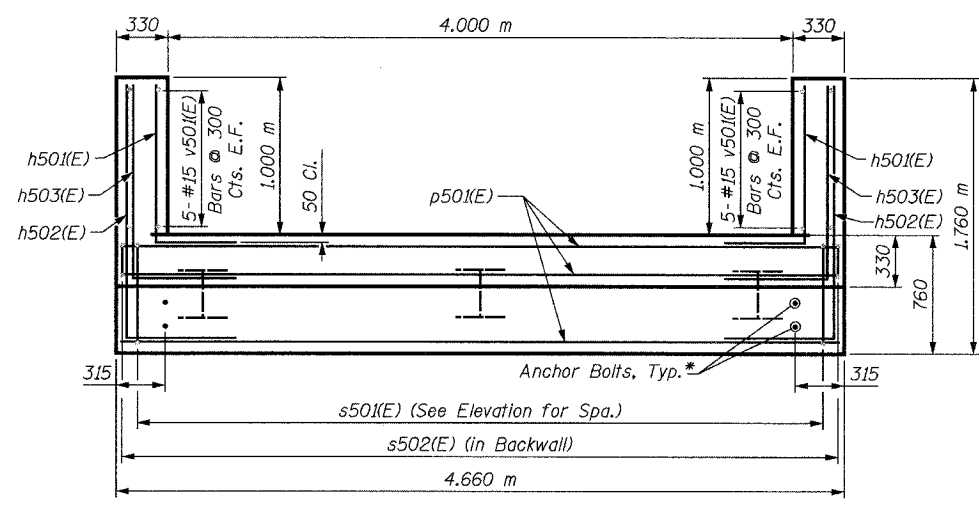


**ELEVATION**



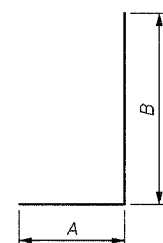
**SIDE VIEW**

\*Anchor bolt size and locations shall be checked against the Bridge Fabricator's requirements prior to setting them.

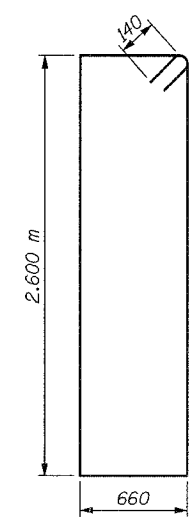


**PLAN**

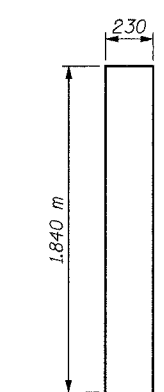
Bar	A	B
h501(E)	0.900 m	1.000 m
h502(E)	0.900 m	1.640 m
h503(E)	0.900 m	1.220 m



**BAR h501(E) TO h503(E)**



**BAR s501(E)**



**BAR s502(E)**

**BILL OF MATERIAL**

Bar	No.	Size	Length	Shape
h501(E)	28	#15	1.90 m	□
h502(E)	20	#15	2.54 m	□
h503(E)	8	#15	2.12 m	□
p501(E)	32	#15	4.56 m	—
s501(E)	16	#15	6.84 m	□
s502(E)	16	#15	3.91 m	□
v501(E)	20	#15	3.67 m	—
Concrete Structures			Cu. M	14.0
Reinforcement Bars, Epoxy Coated			kg	810
Furnishing Steel Piles HP310x94			Meter	51
Driving Steel Piles			Meter	51
Metal Shoes			Each	3
Structure Excavation			Cu. M	31

**LEGEND**

E.F. = Each Face

**MIN. BAR LAP**

#15 = 890

**PILE DATA:**

Type: HP310x94  
Capacity: Driven to Refusal  
Est. Length: 17 m  
No. Required: 3

**NOTES:**

Space reinforcement in cap to miss anchor bolts.

All edges shall have standard 20 mm chamfers except as noted.

For Anchor Bolt Details, see Sheet S32.

There shall be no splicing of longitudinal bars. Bars shall be ordered full length.

Bars designated (E) shall be epoxy coated.

SHEET S30 of S33

REVISIONS		NAME	DATE
NO.	DESCRIPTION		

**URS** 1701 GOLF ROAD, SUITE 1000 TEL (847) 228-0707  
ROLLING MEADOWS, IL 60008 FAX (847) 228-1115

VILLAGE OF OAKBROOK  
SALT CREEK GREENWAY TRAIL  
PEDESTRIAN BRIDGE, STA. 23+508.08  
WEST ABUTMENT DETAILS

DATE: 06/30/05  
DESIGNED BY: MDS  
DRAWN BY: MDS  
CHECKED BY: GAT