

SECTION	COUNTY	TOTAL SHEETS	SHEET NO.
94-F3000-05-BT	COOK	102	13
STA. TO STA.			
IDOT PROJECT NO. TE-D001(610)			
CENTENNIAL TRAIL			

CONTRACT NO. 83859

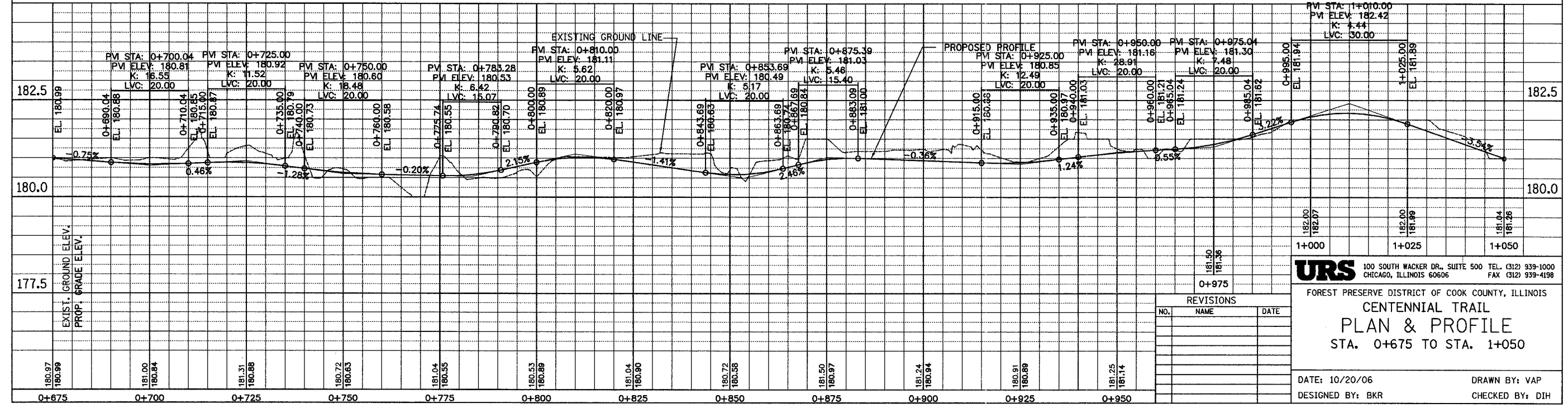
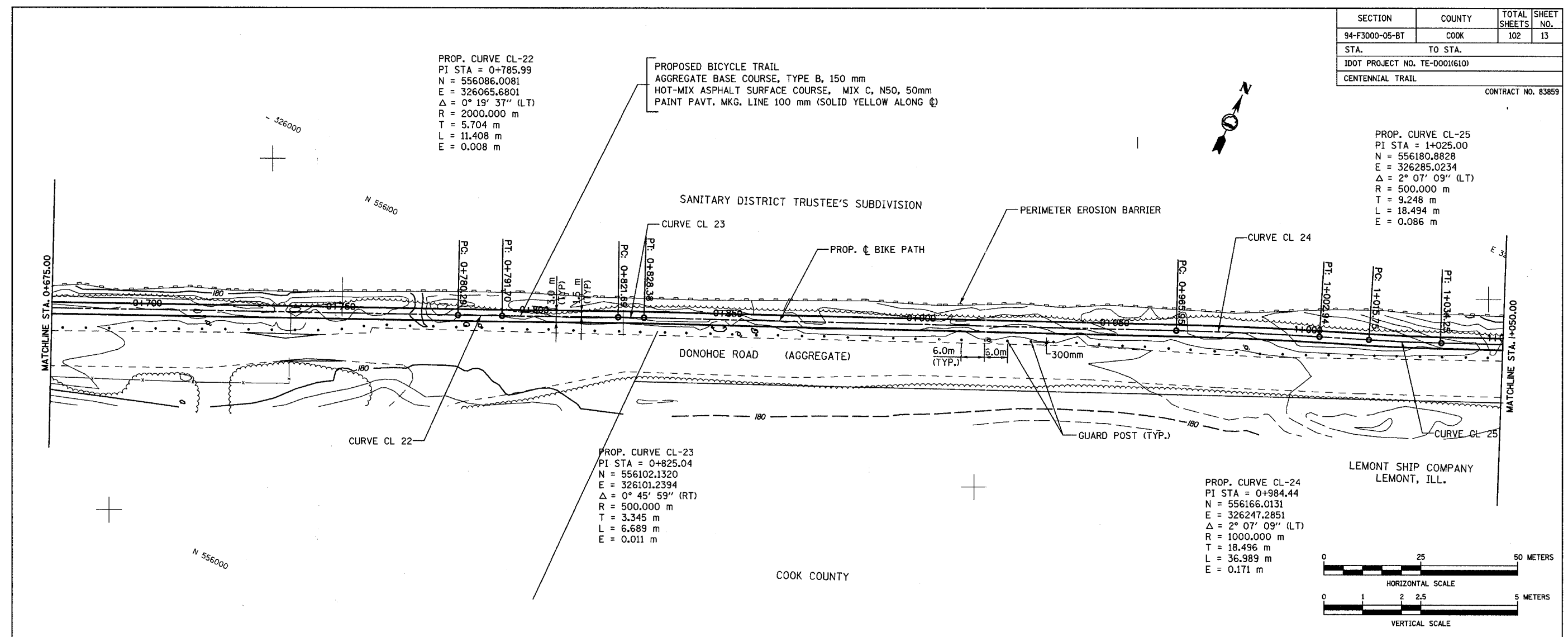
PROP. CURVE CL-22  
 PI STA = 0+785.99  
 N = 556086.0081  
 E = 326065.6801  
 $\Delta = 0^\circ 19' 37''$  (LT)  
 R = 2000.000 m  
 T = 5.704 m  
 L = 11.408 m  
 E = 0.008 m

PROPOSED BICYCLE TRAIL  
 AGGREGATE BASE COURSE, TYPE B, 150 mm  
 HOT-MIX ASPHALT SURFACE COURSE, MIX C, N50, 50mm  
 PAINT PAVT. MKG. LINE 100 mm (SOLID YELLOW ALONG  $\phi$ )

PROP. CURVE CL-25  
 PI STA = 1+025.00  
 N = 556180.8828  
 E = 326285.0234  
 $\Delta = 2^\circ 07' 09''$  (LT)  
 R = 500.000 m  
 T = 9.248 m  
 L = 18.494 m  
 E = 0.086 m

PROP. CURVE CL-23  
 PI STA = 0+825.04  
 N = 556102.1320  
 E = 326101.2394  
 $\Delta = 0^\circ 45' 59''$  (RT)  
 R = 500.000 m  
 T = 3.345 m  
 L = 6.689 m  
 E = 0.011 m

PROP. CURVE CL-24  
 PI STA = 0+984.44  
 N = 556166.0131  
 E = 326247.2851  
 $\Delta = 2^\circ 07' 09''$  (LT)  
 R = 1000.000 m  
 T = 18.496 m  
 L = 36.989 m  
 E = 0.171 m



**URS** 100 SOUTH WACKER DR., SUITE 500 TEL: (312) 939-1000  
 CHICAGO, ILLINOIS 60606 FAX: (312) 939-4198

FOREST PRESERVE DISTRICT OF COOK COUNTY, ILLINOIS  
**CENTENNIAL TRAIL**  
**PLAN & PROFILE**  
 STA. 0+675 TO STA. 1+050

DATE: 10/20/06  
 DESIGNED BY: BKR  
 DRAWN BY: VAP  
 CHECKED BY: DIH

REVISIONS		
NO.	NAME	DATE