

SECTION	COUNTY	TOTAL SHEETS	SHEET NO.
94-F3000-05-BT	COOK	102	27
STA. TO STA.			
IDOT PROJECT NO. TE-00016101			
CENTENNIAL TRAIL			

CONTRACT NO. 83859

CURVE CL-37
 PI STA = 5+929.110
 N = 557,819.950
 E = 330,499.324
 $\Delta = 8^\circ 15' 22''$ (LT)
 R = 300.000 m
 T = 21.652 m
 L = 43.229 m
 E = 0.780 m

CURVE CL-39
 PI STA = 6+051.608
 N = 557,894.669
 E = 330,596.101
 $\Delta = 4^\circ 04' 38''$ (LT)
 R = 350.000 m
 T = 12.458 m
 L = 24.906 m
 E = 0.222 m

CURVE CL-41
 PI STA = 6+098.949
 N = 557,914.388
 E = 330,638.628
 $\Delta = 3^\circ 56' 38''$ (LT)
 R = 200.000 m
 T = 6.886 m
 L = 13.767 m
 E = 0.119 m

CURVE CL-42
 PI STA = 6+159.266
 N = 559,935.530
 E = 330,695.125
 $\Delta = 10^\circ 58' 21''$ (LT)
 R = 115.000 m
 T = 11.045 m
 L = 22.023 m
 E = 0.529 m

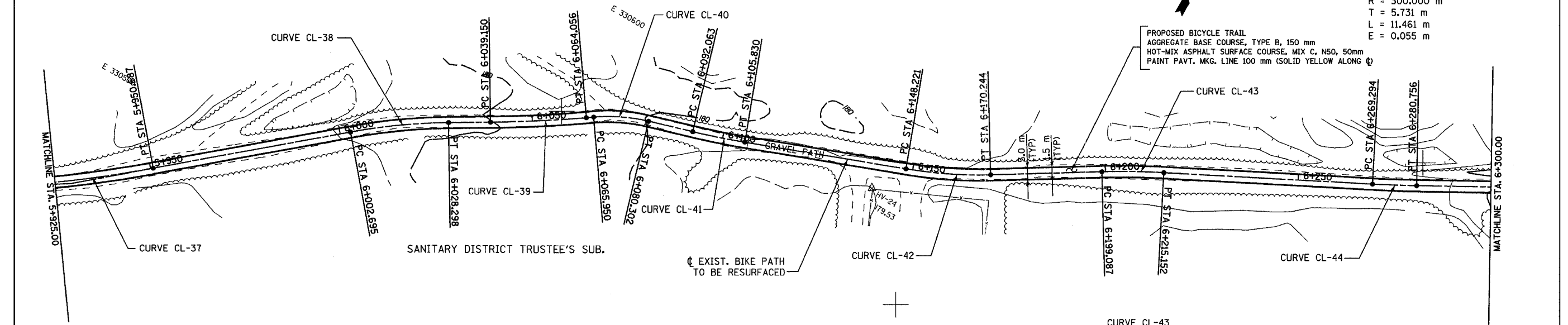
CURVE CL-44
 PI STA = 6+275.026
 N = 557,991.275
 E = 330,796.562
 $\Delta = 2^\circ 11' 20''$ (LT)
 R = 300.000 m
 T = 5.731 m
 L = 11.461 m
 E = 0.055 m

SANITARY DISTRICT TRUSTEE'S SUB.

SANITARY DISTRICT TRUSTEE'S SUB.

EXIST. BIKE PATH TO BE RESURFACED

PROPOSED BICYCLE TRAIL
 AGGREGATE BASE COURSE, TYPE B, 150 mm
 HOT-MIX ASPHALT SURFACE COURSE, MIX C, N50, 50mm
 PAINT PAVT. MKG. LINE 100 mm (SOLID YELLOW ALONG ϕ)

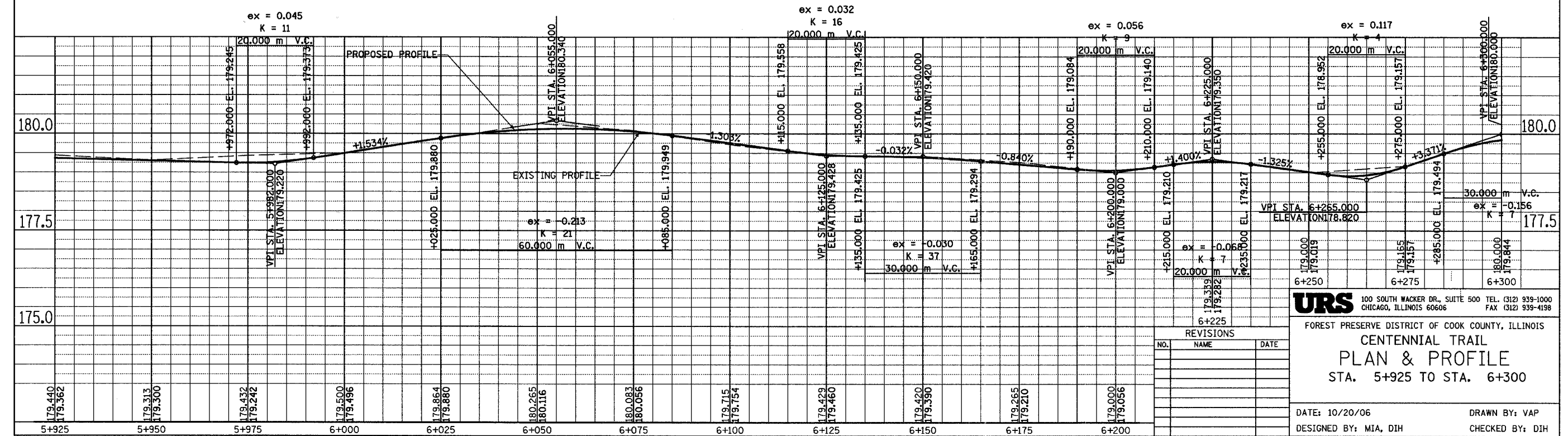
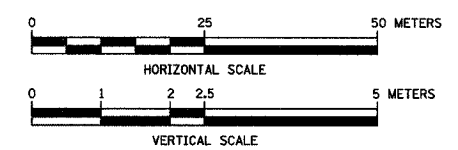


N 557800

CURVE CL-38
 PI STA = 6+015.528
 N = 557,876.179
 E = 330,565.046
 $\Delta = 9^\circ 46' 47''$ (RT)
 R = 150.000 m
 T = 12.833 m
 L = 25.603 m
 E = 0.548 m

CURVE CL-40
 PI STA = 6+073.188
 N = 557,907.005
 E = 330,613.820
 $\Delta = 18^\circ 16' 24''$ (RT)
 R = 45.000 m
 T = 7.237 m
 L = 14.352 m
 E = 0.578 m

CURVE CL-43
 PI STA = 6+207.124
 N = 557,960.563
 E = 330,735.992
 $\Delta = 4^\circ 36' 08''$ (RT)
 R = 200.000 m
 T = 8.037 m
 L = 16.065 m
 E = 0.161 m



REVISIONS		
NO.	NAME	DATE

URS 100 SOUTH WACKER DR., SUITE 500 TEL: (312) 939-1000
 CHICAGO, ILLINOIS 60606 FAX: (312) 939-4198

FOREST PRESERVE DISTRICT OF COOK COUNTY, ILLINOIS
CENTENNIAL TRAIL
PLAN & PROFILE
 STA. 5+925 TO STA. 6+300

DATE: 10/20/06 DRAWN BY: VAP
 DESIGNED BY: MIA, DIH CHECKED BY: DIH