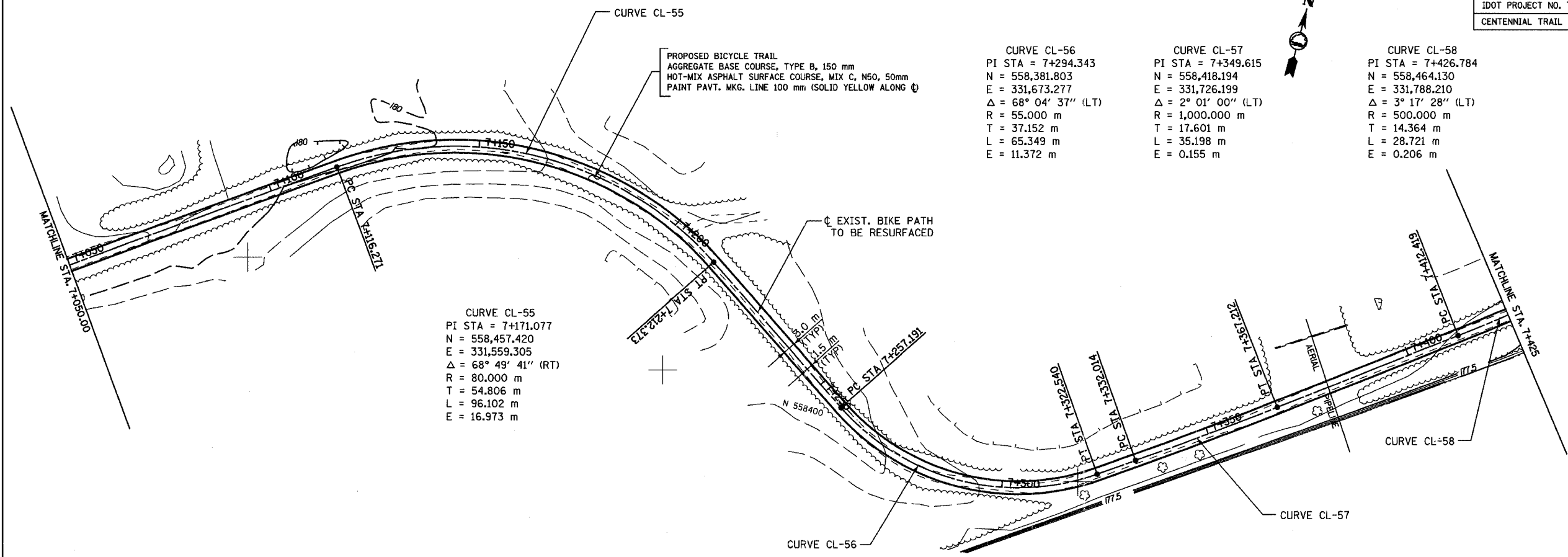


SECTION	COUNTY	TOTAL SHEETS	SHEET NO.
94-F3000-05-BT	COOK	102	30
STA. TO STA.			
IDOT PROJECT NO. TE-D001(610)			
CENTENNIAL TRAIL			

CONTRACT NO. 83859



CURVE CL-55
 PI STA = 7+171.077
 N = 558,457.420
 E = 331,559.305
 $\Delta = 68^\circ 49' 41''$ (RT)
 R = 80.000 m
 T = 54.806 m
 L = 96.102 m
 E = 16.973 m

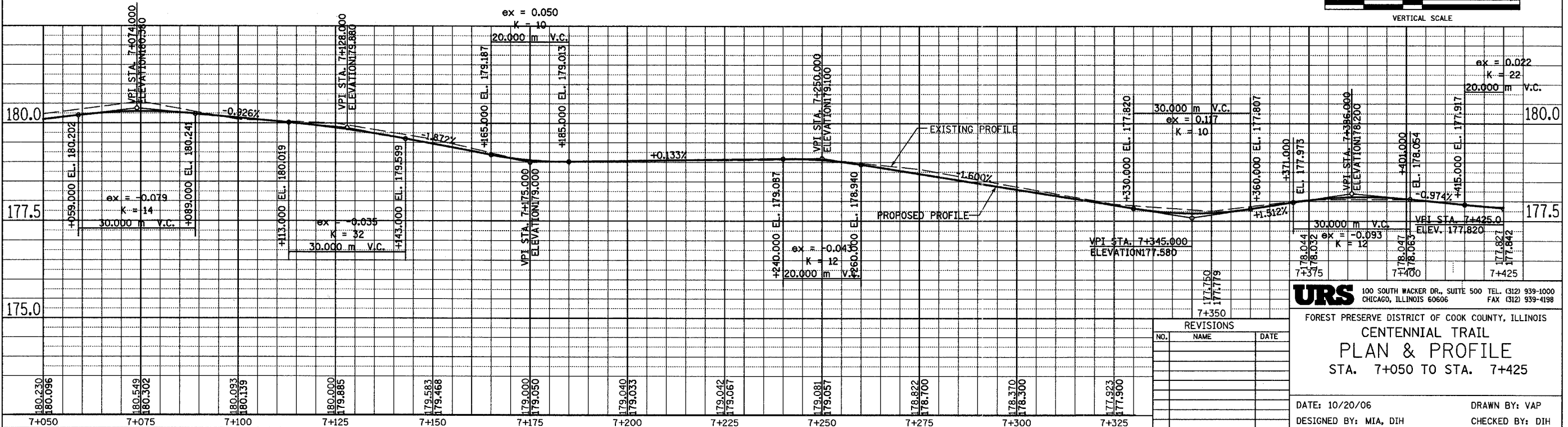
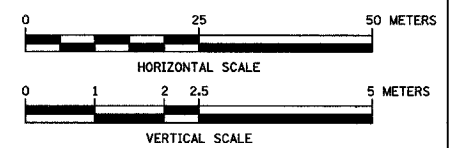
CURVE CL-56
 PI STA = 7+294.343
 N = 558,381.803
 E = 331,673.277
 $\Delta = 68^\circ 04' 37''$ (LT)
 R = 55.000 m
 T = 37.152 m
 L = 65.349 m
 E = 11.372 m

CURVE CL-57
 PI STA = 7+349.615
 N = 558,418.194
 E = 331,726.199
 $\Delta = 2^\circ 01' 00''$ (LT)
 R = 1,000.000 m
 T = 17.601 m
 L = 35.198 m
 E = 0.155 m

CURVE CL-58
 PI STA = 7+426.784
 N = 558,464.130
 E = 331,788.210
 $\Delta = 3^\circ 17' 28''$ (LT)
 R = 500.000 m
 T = 14.364 m
 L = 28.721 m
 E = 0.206 m

PROPOSED BICYCLE TRAIL
 AGGREGATE BASE COURSE, TYPE B, 150 mm
 HOT-MIX ASPHALT SURFACE COURSE, MIX C, N60, 50mm
 PAINT PAVT. MKG. LINE 100 mm (SOLID YELLOW ALONG ϕ)

EXIST. BIKE PATH
 TO BE RESURFACED



REVISIONS		
NO.	NAME	DATE

URS 100 SOUTH WACKER DR., SUITE 500 TEL. (312) 939-1000
 CHICAGO, ILLINOIS 60606 FAX (312) 939-4198

FOREST PRESERVE DISTRICT OF COOK COUNTY, ILLINOIS
CENTENNIAL TRAIL
PLAN & PROFILE
 STA. 7+050 TO STA. 7+425

DATE: 10/20/06 DRAWN BY: VAP
 DESIGNED BY: MIA, DIH CHECKED BY: DIH