

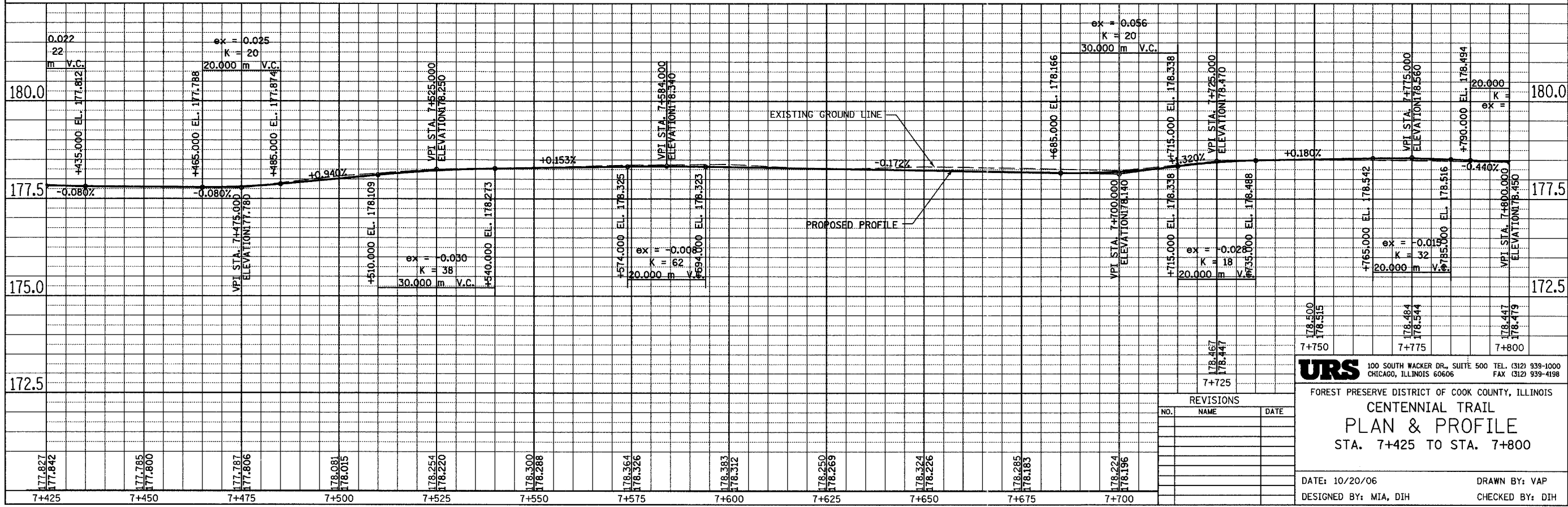
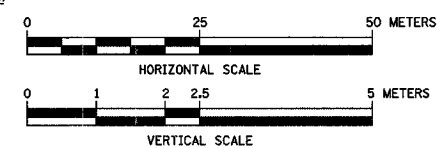
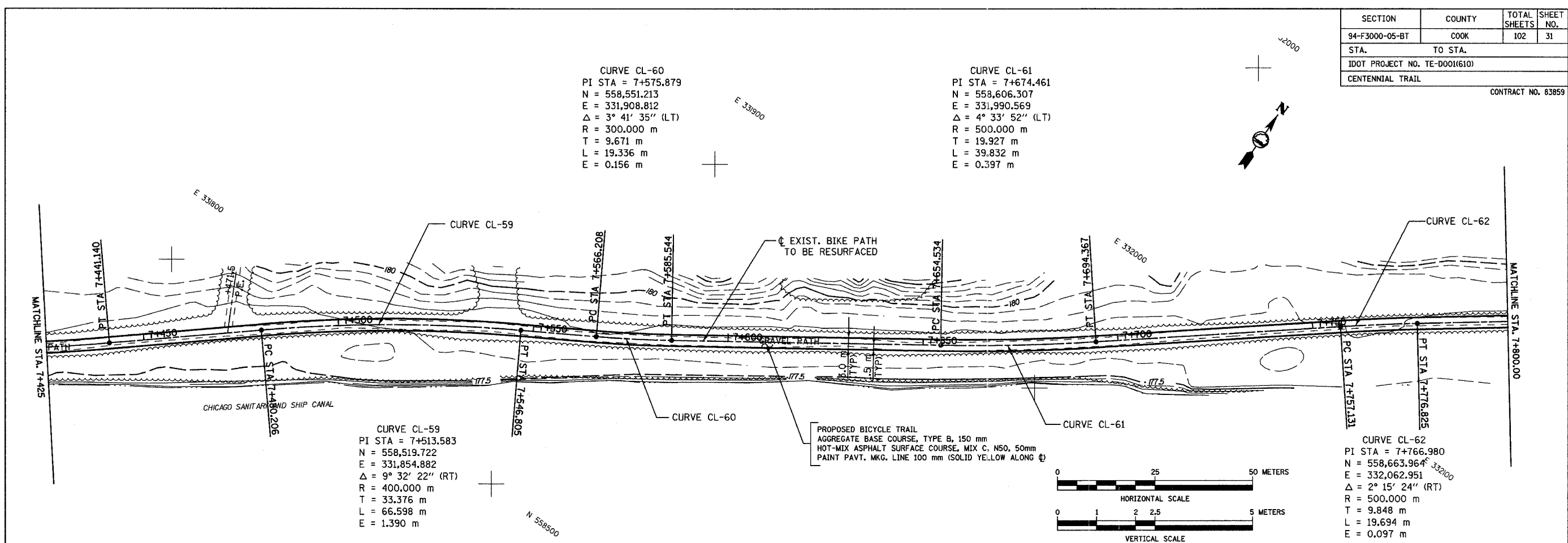
SECTION	COUNTY	TOTAL SHEETS	SHEET NO.
94-F3000-05-BT	COOK	102	31
STA. TO STA.			
IDOT PROJECT NO. TE-0001610)			
CENTENNIAL TRAIL		CONTRACT NO. 83859	

**CURVE CL-60**  
 PI STA = 7+575.879  
 N = 558,551.213  
 E = 331,908.812  
 $\Delta = 3^\circ 41' 35''$  (LT)  
 R = 300.000 m  
 T = 9.671 m  
 L = 19.336 m  
 E = 0.156 m

**CURVE CL-61**  
 PI STA = 7+674.461  
 N = 558,606.307  
 E = 331,990.569  
 $\Delta = 4^\circ 33' 52''$  (LT)  
 R = 500.000 m  
 T = 19.927 m  
 L = 39.832 m  
 E = 0.397 m

**CURVE CL-59**  
 PI STA = 7+513.583  
 N = 558,519.722  
 E = 331,854.882  
 $\Delta = 9^\circ 32' 22''$  (RT)  
 R = 400.000 m  
 T = 33.376 m  
 L = 66.598 m  
 E = 1.390 m

**CURVE CL-62**  
 PI STA = 7+766.980  
 N = 558,663.964  
 E = 332,062.951  
 $\Delta = 2^\circ 15' 24''$  (RT)  
 R = 500.000 m  
 T = 9.848 m  
 L = 19.694 m  
 E = 0.097 m



**URS** 100 SOUTH WACKER DR., SUITE 500 TEL. (312) 939-1000  
 CHICAGO, ILLINOIS 60606 FAX (312) 939-4198

FOREST PRESERVE DISTRICT OF COOK COUNTY, ILLINOIS  
**CENTENNIAL TRAIL**  
**PLAN & PROFILE**  
 STA. 7+425 TO STA. 7+800

DATE: 10/20/06 DRAWN BY: VAP  
 DESIGNED BY: MIA, DIH CHECKED BY: DIH

REVISIONS		
NO.	NAME	DATE