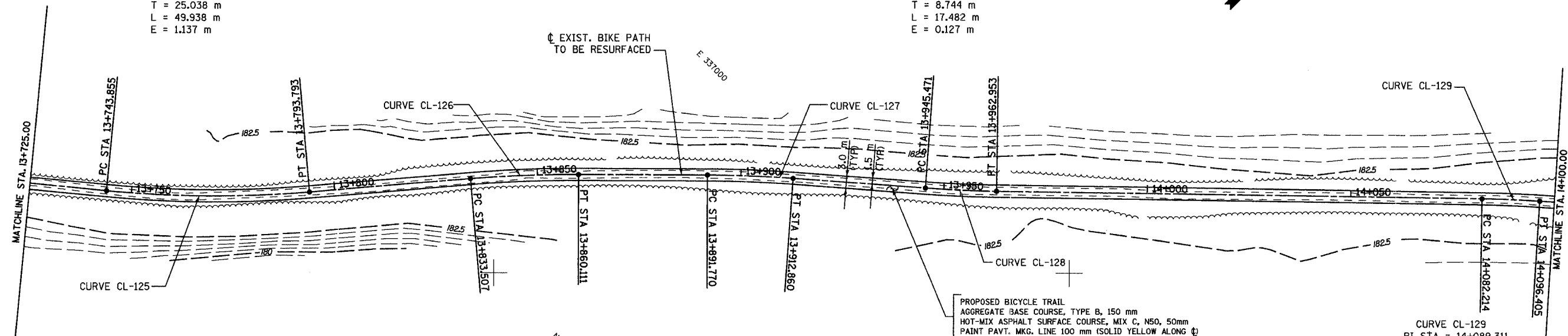
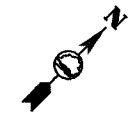


SECTION	COUNTY	TOTAL SHEETS	SHEET NO.
94-F3000-05-BT	COOK	102	48
STA. TO STA.			
IDOT PROJECT NO. TE-D001(610)			
CENTENNIAL TRAIL			
CONTRACT NO. 63859			

CURVE CL-125  
 PI STA = 13+768.893  
 N = 562,062.762  
 E = 336,937.906  
 $\Delta = 10^\circ 24' 16''$  (LT)  
 R = 275.000 m  
 T = 25.038 m  
 L = 49.938 m  
 E = 1.137 m

CURVE CL-128  
 PI STA = 13+954.214  
 N = 562,195.545  
 E = 337,066.836  
 $\Delta = 3^\circ 20' 20''$  (LT)  
 R = 300.000 m  
 T = 8.744 m  
 L = 17.482 m  
 E = 0.127 m



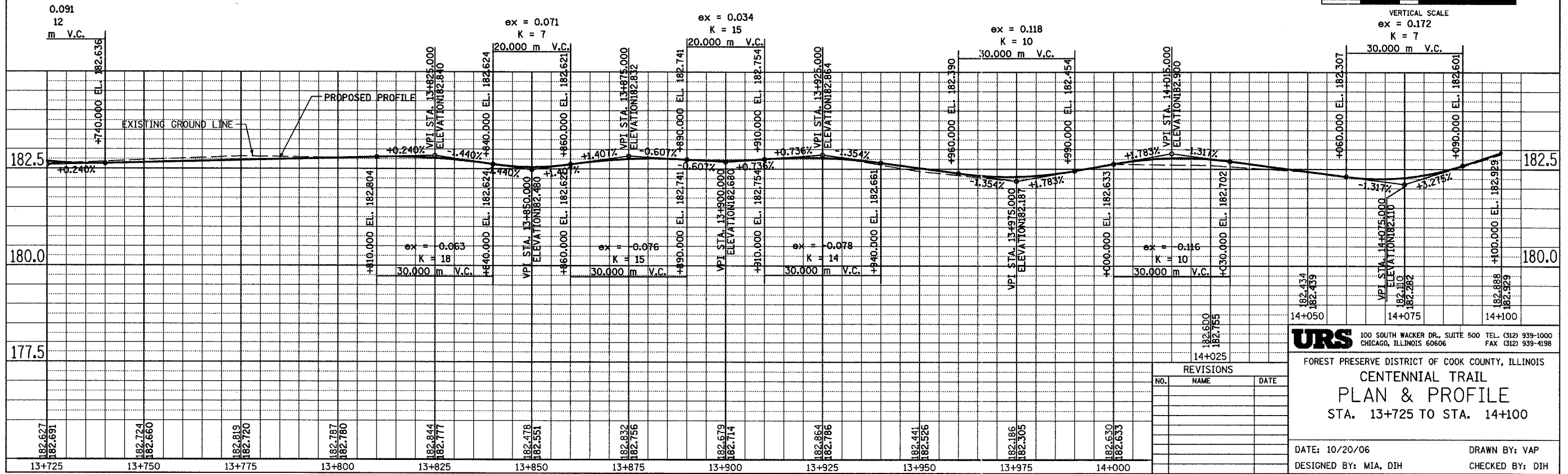
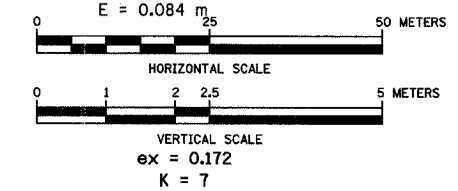
CURVE CL-126  
 PI STA = 13+846.818  
 N = 562,122.485  
 E = 336,988.174  
 $\Delta = 5^\circ 04' 52''$  (RT)  
 R = 300.000 m  
 T = 13.311 m  
 L = 26.604 m  
 E = 0.295 m

CURVE CL-127  
 PI STA = 13+902.319  
 N = 562,161.627  
 E = 337,027.547  
 $\Delta = 4^\circ 01' 40''$  (RT)  
 R = 300.000 m  
 T = 10.549 m  
 L = 21.089 m  
 E = 0.185 m

CURVE CL-129  
 PI STA = 14+089.311  
 N = 562,289.636  
 E = 337,163.784  
 $\Delta = 2^\circ 42' 37''$  (RT)  
 R = 300.000 m  
 T = 7.097 m  
 L = 14.191 m  
 E = 0.084 m

PROPOSED BICYCLE TRAIL  
 AGGREGATE BASE COURSE, TYPE B, 150 mm  
 HOT-MIX ASPHALT SURFACE COURSE, MIX C, N50, 50mm  
 PAINT PAVT. MKG. LINE 100 mm (SOLID YELLOW ALONG  $\phi$ )

SANITARY DRAINAGE & SHIP CANAL



**URS** 100 SOUTH WACKER DR., SUITE 500 TEL. (312) 939-1000  
 CHICAGO, ILLINOIS 60606 FAX (312) 939-4198

FOREST PRESERVE DISTRICT OF COOK COUNTY, ILLINOIS  
**CENTENNIAL TRAIL**  
**PLAN & PROFILE**  
 STA. 13+725 TO STA. 14+100

DATE: 10/20/06 DRAWN BY: VAP  
 DESIGNED BY: MIA, DIH CHECKED BY: DIH

REVISIONS		
NO.	NAME	DATE