

SECTION	COUNTY	TOTAL SHEETS	SHEET NO.
94-F3000-05-BT	COOK	102	49
STA. TO STA.			
IDOT PROJECT NO. TE-0001(610)			
CENTENNIAL TRAIL			
CONTRACT NO. 83859			

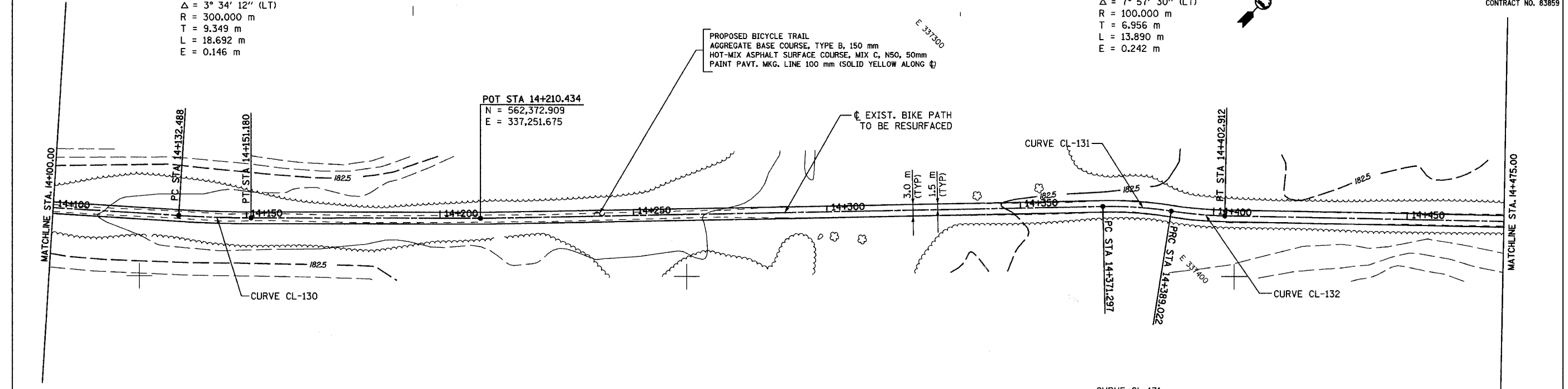
CURVE CL-130
 PI STA = 14+141.837
 N = 562,324.397
 E = 337,203.167
 $\Delta = 3^{\circ} 34' 12''$ (LT)
 R = 300.000 m
 T = 9.349 m
 L = 18.692 m
 E = 0.146 m

CURVE CL-132
 PI STA = 14+395.978
 N = 562,504.591
 E = 337,382.134
 $\Delta = 7^{\circ} 57' 30''$ (LT)
 R = 100.000 m
 T = 6.956 m
 L = 13.890 m
 E = 0.242 m

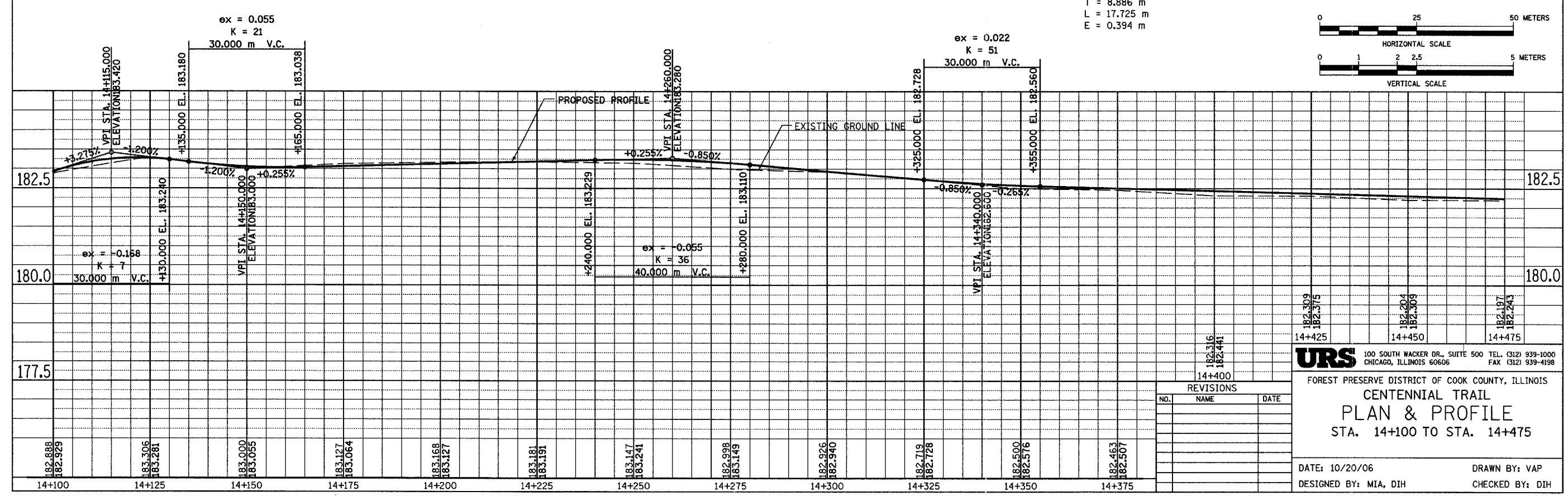
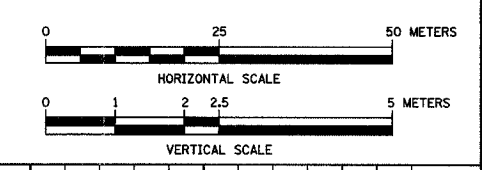
POT STA 14+210.434
 N = 562,372.909
 E = 337,251.675

PROPOSED BICYCLE TRAIL
 AGGREGATE BASE COURSE, TYPE B, 150 mm
 HOT-MIX ASPHALT SURFACE COURSE, MIX C, N50, 50mm
 PAINT PAVT. MKG. LINE 100 mm (SOLID YELLOW ALONG ϕ)

EXIST. BIKE PATH
 TO BE RESURFACED



CURVE CL-131
 PI STA = 14+380.183
 N = 562,495.284
 E = 337,369.313
 $\Delta = 10^{\circ} 09' 20''$ (RT)
 R = 100.000 m
 T = 8.886 m
 L = 17.725 m
 E = 0.394 m



182.888	183.306	183.000	183.127	183.168	183.181	183.147	182.998	182.826	182.719	182.500	182.463
182.929	183.281	183.055	183.064	183.127	183.191	183.241	183.149	182.940	182.728	182.576	182.507
14+100	14+125	14+150	14+175	14+200	14+225	14+250	14+275	14+300	14+325	14+350	14+375

REVISIONS		
NO.	NAME	DATE

URS 100 SOUTH WACKER DR., SUITE 500 TEL. (312) 939-1000
 CHICAGO, ILLINOIS 60606 FAX (312) 939-4198

FOREST PRESERVE DISTRICT OF COOK COUNTY, ILLINOIS
CENTENNIAL TRAIL
PLAN & PROFILE
 STA. 14+100 TO STA. 14+475

DATE: 10/20/06 DRAWN BY: VAP
 DESIGNED BY: MIA, DIH CHECKED BY: DIH