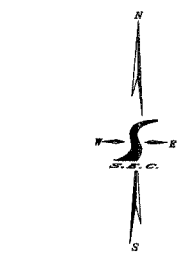
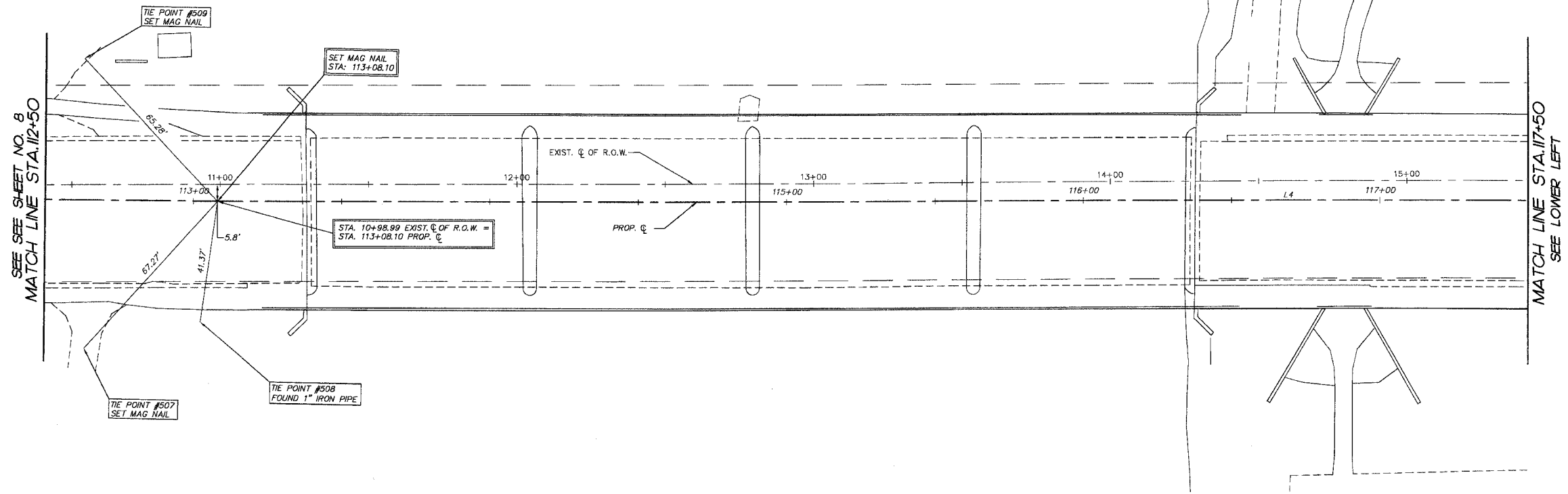
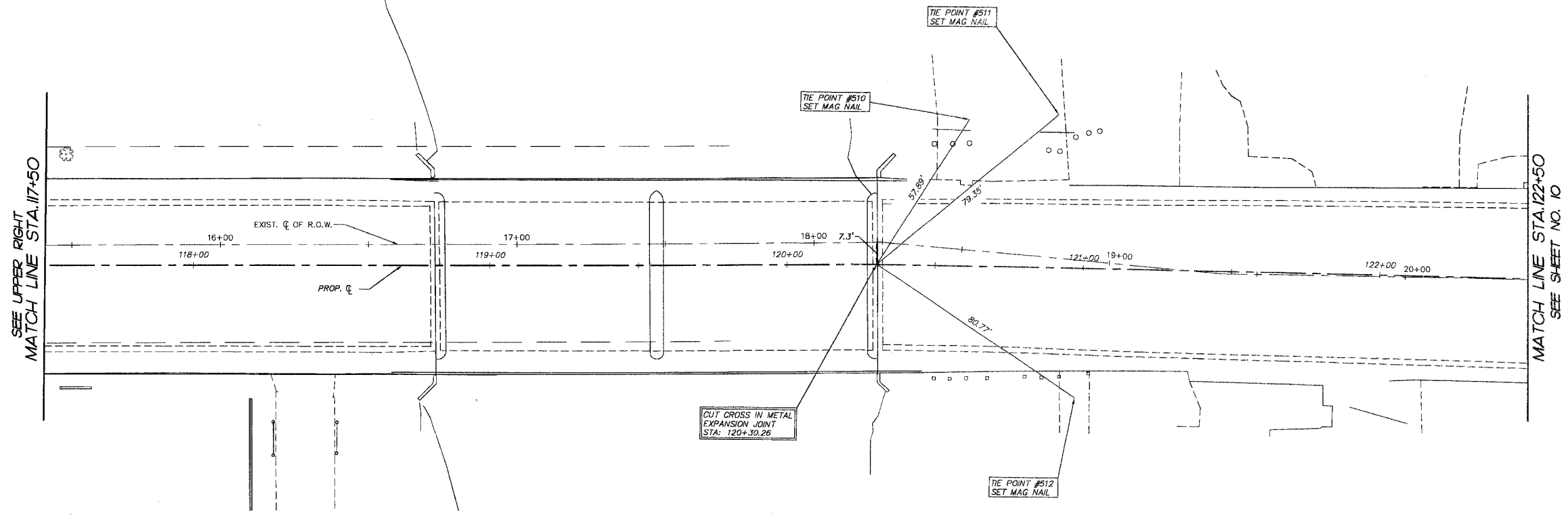


F.A.P. RTE.	SECTION	COUNTY	TOTAL SHEETS	SHEET NO.
1517	03-00247-00-BR	KANE	121	9
STA. 112+50		TO STA. 122+50		
FED. ROAD DIST. NO. 1		ILLINOIS HIGHWAY PROJECT		
CONTRACT #: 83867				



LINE	LENGTH	BEARING	BEGIN STA.	END STA.
L1	500.00'	S89°04'04"W	105+00	105+00
L2	401.59'	S89°04'04"W	105+00	109+01.59
L3	406.52'	N89°35'59"E	109+01.59	113+08.10
L4	722.16'	N88°59'04"E	113+08.10	120+30.26
L5	454.41'	S89°34'41"E	120+30.26	124+84.68
L6	53.89'	N89°37'36"E	124+84.68	125+38.57
L7	283.73'	N83°42'21"E	125+38.57	128+22.30
L8	271.84'	N89°24'05"E	128+22.30	130+94.14

TIE POINT	NORTHING	EASTING
507	1859007.47	990380.41
508	1859017.16	990419.46
509	1859105.04	990379.06
510	1859120.26	991177.06
511	1859122.67	991207.19
512	1859026.57	991214.05



PLOT FILE STANDARD  
 COMP. FILE: 050101-629.dwg

NO.	NAME	DATE
7.		
6.		
5.		
4.		
3.		
2.		
1.		

**SMITH ENGINEERING CONSULTANTS, INC.**  
 CIVIL/STRUCTURAL ENGINEERS AND SURVEYORS  
 4500 PRINCE PARKWAY, SUITE 201  
 McHENRY, ILLINOIS 60050  
 P.O. BOX 1778    P.O. BOX 1781  
 www.smithengineering.com    E-MAIL: sec@smithengineering.com  
 McHENRY    HUNTLEY    YORKVILLE  
 ILLINOIS PROFESSIONAL DESIGN FIRM # 184-000108

ILLINOIS DEPARTMENT OF TRANSPORTATION  
  
 CITY OF AURORA  
 ILLINOIS AVENUE OVER THE FOX RIVER  
 ALIGNMENT AND TIES  
 STA 112+50 TO STA 122+50  
  
 SCALE: 1" = 20'  
 DATE 07-28-2006  
 DRAWN BY MPL  
 CHECKED BY JLP