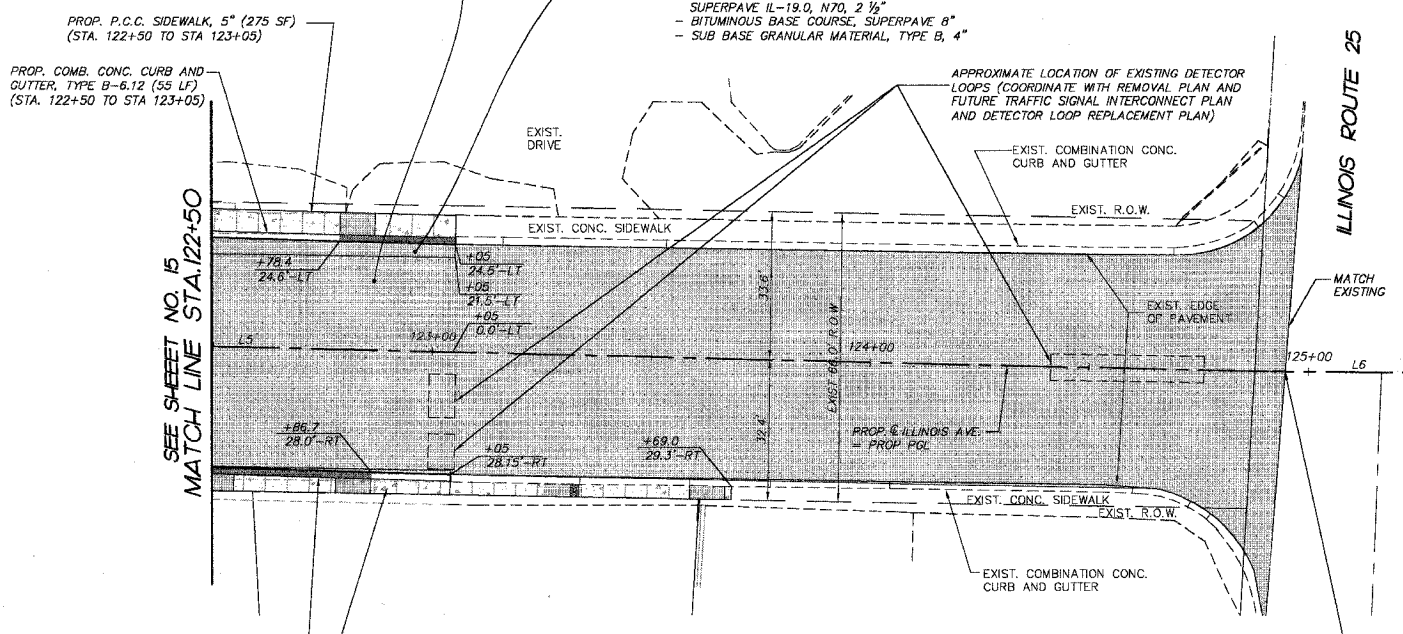


F.A.P. RTE.	SECTION	COUNTY	TOTAL SHEETS	SHEET NO.
1517	03-00247-00-BR	KANE	121	16
STA. 122+50 TO STA. 125+00				
FED. ROAD DIST. NO. 1		ILLINOIS	HIGHWAY PROJECT	
CONTRACT #: 83867				

- PROPOSED RESURFACING (1,458 SY)
 - BITUMINOUS SURFACE REMOVAL, 1 1/2"
 - LEVELING BINDER (MACHINE METHOD)
 - SUPERPAVE N70, (THICKNESS VARIES)
 - BITUMINOUS CONCRETE SURFACE COURSE, SUPERPAVE MIX D, N70, 2"
- PROPOSED PAVEMENT (18 SY)
 - BITUMINOUS CONCRETE SURFACE COURSE, SUPERPAVE MIX D, N70, 1 1/2"
 - BITUMINOUS CONCRETE BINDER COURSE, SUPERPAVE IL-19.0, N70, 2 1/2"
 - BITUMINOUS BASE COURSE, SUPERPAVE B"
 - SUB BASE GRANULAR MATERIAL, TYPE B, 4"



LEGEND

[Pattern]	PROPOSED RESURFACING (QUANTITY ON PLANS)
[Pattern]	PROPOSED PAVEMENT (QUANTITY ON PLANS)
[Pattern]	PROPOSED P.C.C. SIDEWALK, 5" (QUANTITY ON PLANS)
[Pattern]	PROPOSED P.C.C. SIDEWALK, 5" (SPECIAL) (QUANTITY ON PLANS)
[Pattern]	PROPOSED DEPRESSED CURB & GUTTER
[Pattern]	PROPOSED CONCRETE PAVEMENT (QUANTITY ON PLANS)

DATE	
BY	
SURVEYED	
PLOTTED	
TEMPLATE	
AREAS	
CHECKED	
NO.	

PROP. COMB. CONC. CURB AND GUTTER, TYPE B-6.12 (55 LF) (STA. 122+50 TO STA 123+05)

PROP. P.C.C. SIDEWALK, 5" (275 SF) (STA. 122+50 TO STA 123+05)

PROP. P.C.C. SIDEWALK, 5" (591 SF) (STA. 122+50 TO STA 123+69)
 P.C.C. SIDEWALK 5" FROM STA. 123+05 TO 123+69 INCLUDED AS A PARTICIPATING ITEM TO FACILITATE LIGHT POLE INSTALLATION. SEE LIGHTING PLANS.

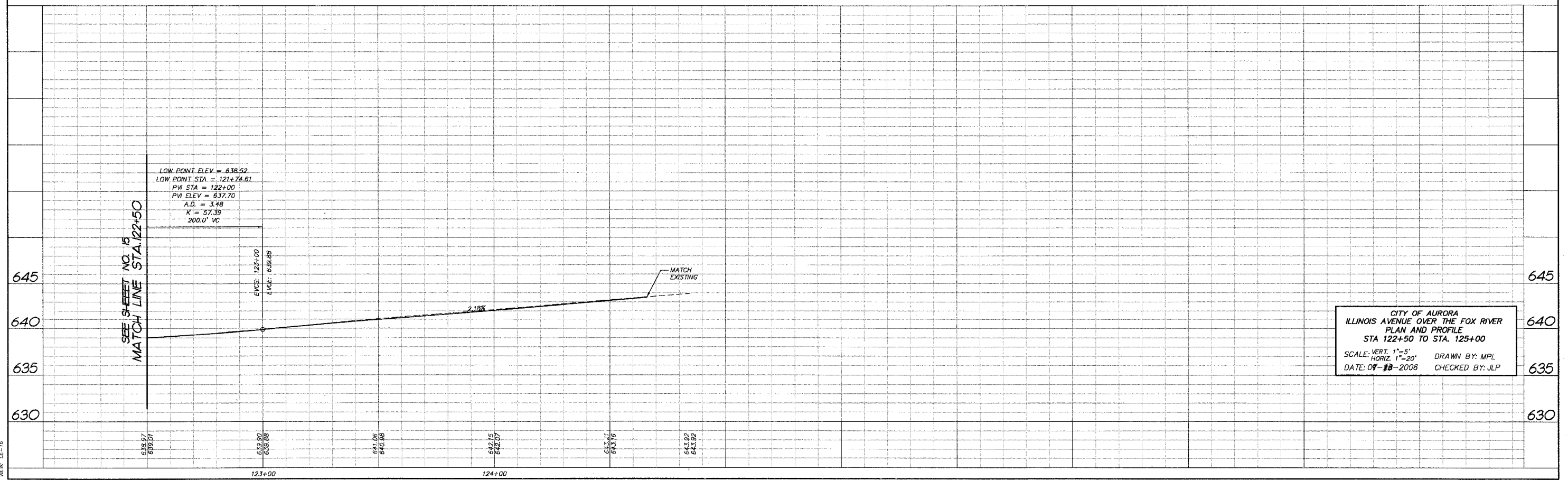
END ILLINOIS AVENUE IMPROVEMENTS STA. 124+95

LIMITS OF NON-PARTICIPATING 100% LOCAL ITEMS STA. 123+05 TO STA. 124+95

LIMITS OF FEDERAL PARTICIPATION STA. 109+02 TO STA. 123+05

LINE TABLE

LINE	LENGTH	BEARING	BEGIN STA.	END STA.
L1	500.00'	S89°04'04"W	100+00	105+00
L2	401.59'	S89°04'04"W	105+00	109+01.59
L3	406.52'	N89°35'59"E	109+01.59	113+08.10
L4	722.16'	N88°59'04"E	113+08.10	120+30.26
L5	454.41'	S89°34'41"E	120+30.26	124+84.68
L6	53.89'	N89°37'36"E	124+84.68	125+38.57
L7	283.73'	N63°42'21"E	125+38.57	128+22.30
L8	271.84'	N89°24'05"E	128+22.30	130+94.14



CITY OF AURORA
 ILLINOIS AVENUE OVER THE FOX RIVER
 PLAN AND PROFILE
 STA 122+50 TO STA. 125+00
 SCALE: VERT. 1"=5'
 HORIZ. 1"=20'
 DATE: 07-18-2006
 DRAWN BY: MPL
 CHECKED BY: JLP

COMP. FILE: 050181-602a.dwg
 VIEW: 05-16