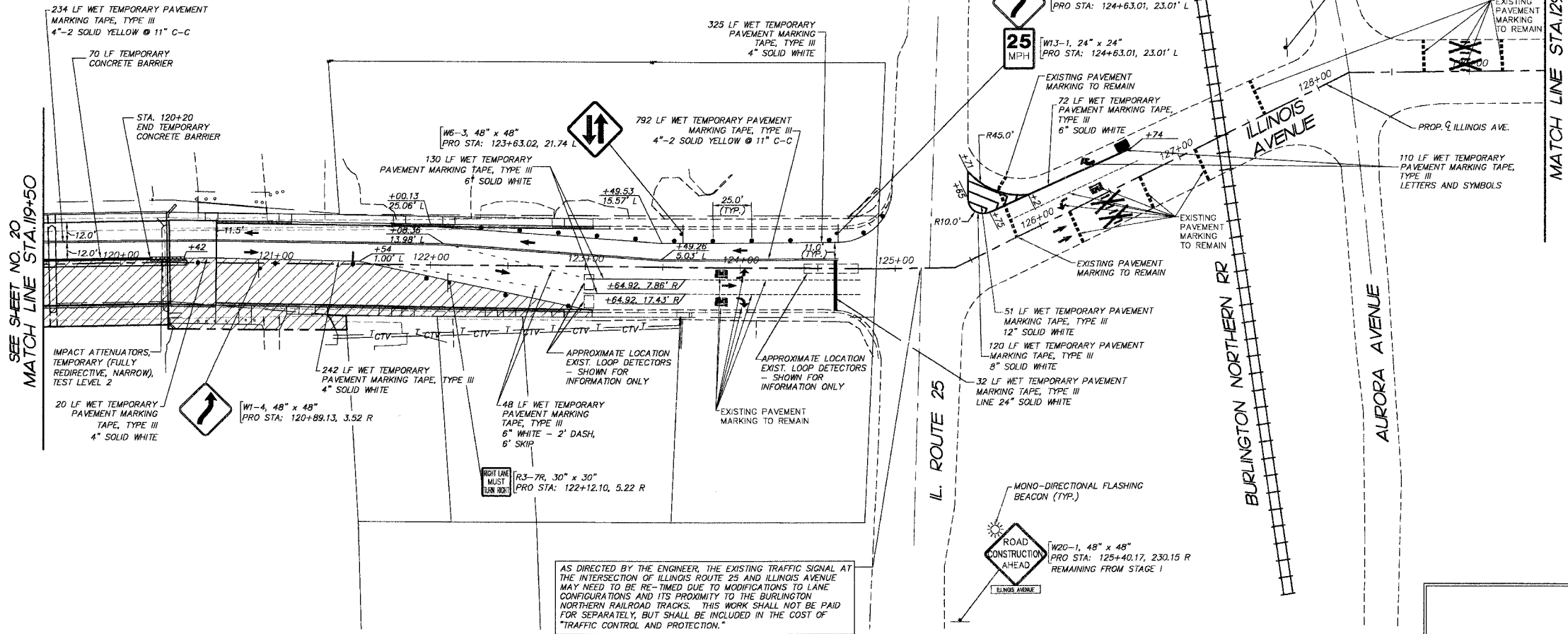


F.A.P. RTE.	SECTION	COUNTY	TOTAL SHEETS	SHEET NO.
1517	03-00247-00-BR	KANE	121	21
STA.	119+50	TO STA.	129+82	
FED. ROAD DIST. NO. 1		ILLINOIS HIGHWAY PROJECT		
CONTRACT # 83867				



SEE SHEET NO. 20
MATCH LINE STA. 119+50

MATCH LINE STA. 129+50
SEE LOWER LEFT

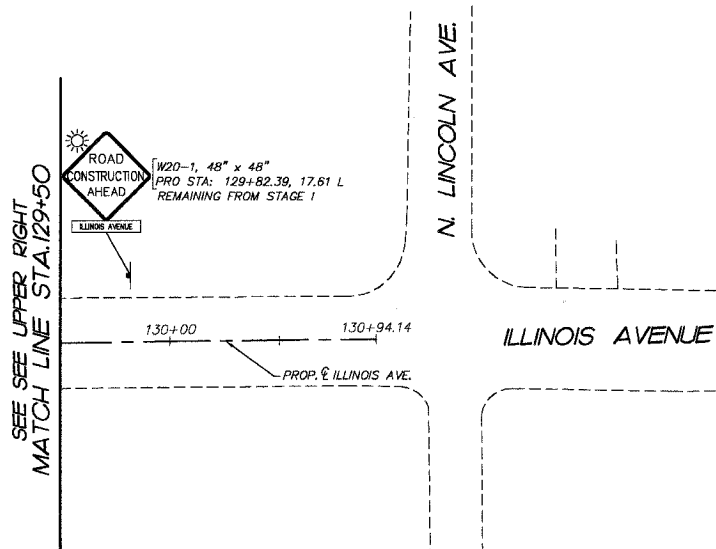
- ### GENERAL NOTES & SYMBOL LEGEND
- ALL SIGNING & STRIPING TO BE IN ACCORDANCE WITH THE FOLLOWING STATE STANDARDS:
720006 701606
702001 701801
TRAFFIC CONTROL AND PROTECTION FOR SIDE ROADS, INTERSECTIONS AND DRIVEWAYS
PAVEMENT MARKING LETTERS AND SYMBOLS FOR TRAFFIC STAGING
 - CONTRACTOR TO MAINTAIN TEMPORARY ACCESS AT ALL TIMES DURING CONSTRUCTION TO ALL DRIVEWAYS ALONG THE LIMITS OF CONSTRUCTION.
 - TYPE II BARRICADE WITH STEADY BURN MONODIRECTIONAL BEACON
 - TYPE III BARRICADE
 - INDICATES DIRECTION OF TRAFFIC FLOW

- ### HATCH LEGEND
- DENOTES CONSTRUCTION AREA FOR IMPROVEMENTS.
 - DENOTES IMPACT ATTENUATORS, TEMPORARY (FULLY REDIRECTIVE, NARROW), TEST LEVEL 2

AS DIRECTED BY THE ENGINEER, THE EXISTING TRAFFIC SIGNAL AT THE INTERSECTION OF ILLINOIS ROUTE 25 AND ILLINOIS AVENUE MAY NEED TO BE RE-TIMED DUE TO MODIFICATIONS TO LANE CONFIGURATIONS AND ITS PROXIMITY TO THE BURLINGTON NORTHERN RAILROAD TRACKS. THIS WORK SHALL NOT BE PAID FOR SEPARATELY, BUT SHALL BE INCLUDED IN THE COST OF "TRAFFIC CONTROL AND PROTECTION."

GENERAL NOTES

- The contractor shall maintain a minimum of 2 - 11' wide lanes for two-way traffic flow.
- The contractor shall maintain traffic in accordance with the special provisions, state standards, standard specifications and as directed by the Engineer.
- The Engineer shall be informed 48 hours in advance of any change in construction staging.
- Type II barricades and vertical panels shall be equipped with mono-directional steady burn lights and shall be placed at 50' intervals along the proposed work zone, 25' intervals within taper sections, and 12' intervals around radii as indicated on the plans or as directed by the Engineer.
- The Contractor shall be required to remove all existing pavement markings which conflict with the designated traffic control plan. This work shall be paid for as pavement marking removal. The Contractor shall mark a double 4" wide solid centerline 11" C/C during Stage I and Stage II traffic operations as shown on the plans. This work shall be paid for at the contract unit price for WET TEMPORARY PAVEMENT MARKING TAPE, TYPE III.
- The furnishing, installing, and relocation of all traffic signs shall be in accordance with the Manual on Uniform Traffic Control Devices and the Standard Specifications. This work shall be included in the cost for traffic control and protection. All conflicting traffic signs shall be covered as directed by the Engineer. This shall be incidental to the cost of traffic control and protection.
- Ingress and egress to driveways and side streets shall be maintained as shown on the plans and/or as directed by the Engineer. Quantities for Temporary Access (Private Entrance) and Temporary Access (Commercial Entrance) have been included in the contract for driveway and side street access. A minimum of one (1) sidewalk shall be maintained throughout the duration of the project for pedestrian traffic.
- The Contractor shall provide and install two (2) weighted sand bags on each Type II barricade used - one (1) weighted sand bag across each bottom rail. All Type III barricades shall require a minimum of four (4) sandbags per barricade.
- The Contractor shall be responsible for ensuring drainage of the roadway during all stages of construction.
- Temporary pavement shall adhere to Section 703 of the Standard Specifications and the special provisions.
- The proposed light poles to be installed on the north side of Illinois Avenue during Stage I construction shall be functional prior to Stage II construction. Coordinate with Lighting Plans and Details.
- The cost of relocating impact attenuators shall be included in the cost of IMPACT ATTENUATORS, TEMPORARY (FULLY REDIRECTIVE, NARROW), TEST LEVEL 2.



SEE UPPER RIGHT
MATCH LINE STA. 129+50

REVISIONS		
NO.	NAME	DATE
7.		
6.		
5.		
4.		
3.		
2.		
1.		

SMITH ENGINEERING CONSULTANTS, INC.
CIVIL/STRUCTURAL ENGINEERS AND SURVEYORS
4500 PRIME PARKWAY, SUITE 201
MARIETTA, ILLINOIS 60060
PH: 815-386-1775 FAX: 815-386-1781
www.smith-engineering.com E-MAIL: sec@smith-engineering.com
MARIETTA ILLINOIS YORKVILLE ILLINOIS
ILLINOIS PROFESSIONAL DESIGN FIRM # 184-000108

ILLINOIS DEPARTMENT OF TRANSPORTATION
CITY OF AURORA
ILLINOIS AVENUE OVER THE FOX RIVER
SUGGESTED MAINTENANCE OF TRAFFIC PLAN
STAGE II
STA 119+50 TO STA 129+82
SCALE: 1" = 40'
DATE 07-28-2006
DRAWN BY MPL
CHECKED BY JLP