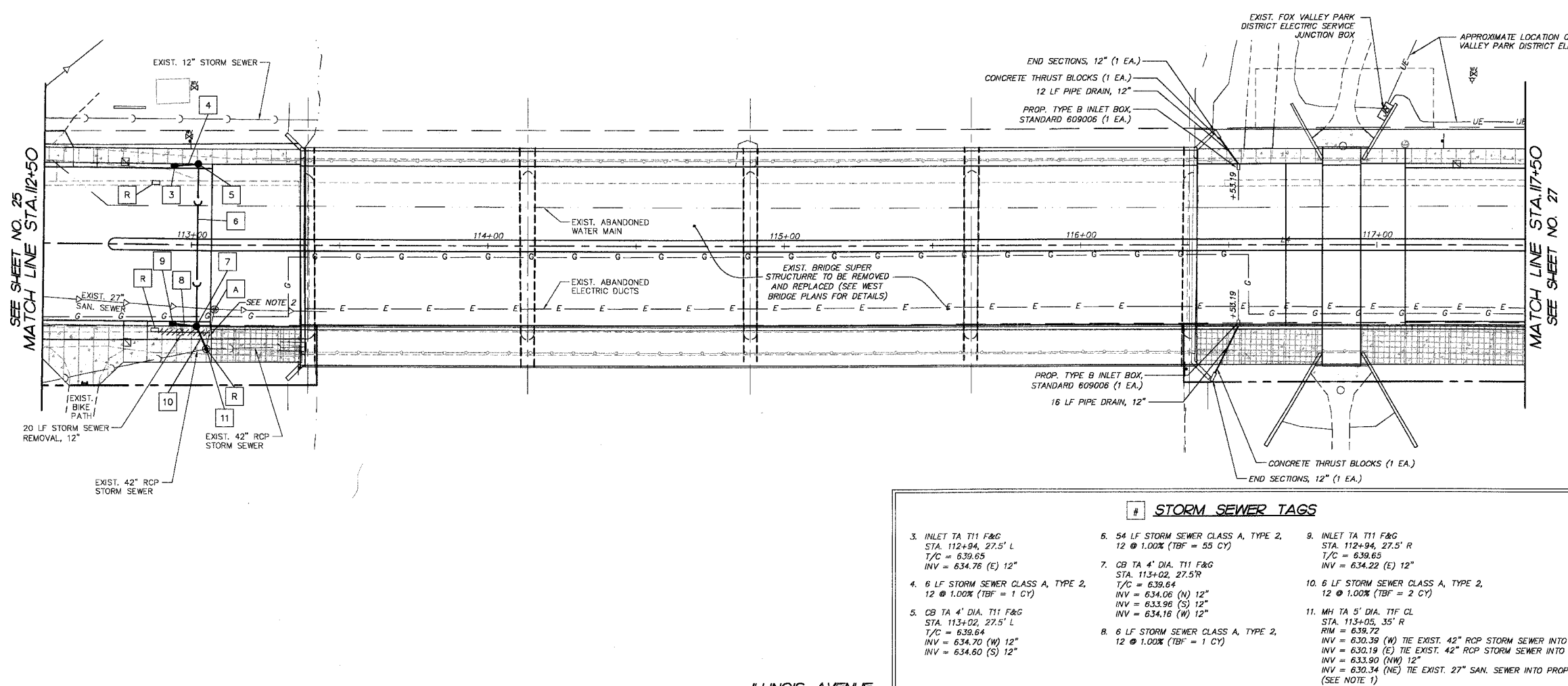


F.A.P. RTE.	SECTION	COUNTY	TOTAL SHEETS	SHEET NO.
1517	03-00247-00-BR	KANE	121	26
STA. 112+50 TO STA. 117+50				
FED. ROAD DIST. NO. 1		ILLINOIS	HIGHWAY PROJECT	
CONTRACT #: 83867				

FINAL SURVEY NOTE BOOK NO.	BY	DATE
SURVEYED PLOTTED TEMPLATE AREAS CHECKED		



**NOTES**

- WORK TO CONNECT EXIST. PIPES TO PROPOSED STRUCTURES SHALL NOT BE PAID FOR SEPARATELY, BUT SHALL BE INCLUDED IN THE COST FOR THE PROPOSED STRUCTURE PAY ITEM.
- EXIST. TEE IN PIPE SHALL BE PLUGGED WITH CLASS SI CONCRETE TO THE SATISFACTION OF THE ENGINEER. EXISTING 27\"/>

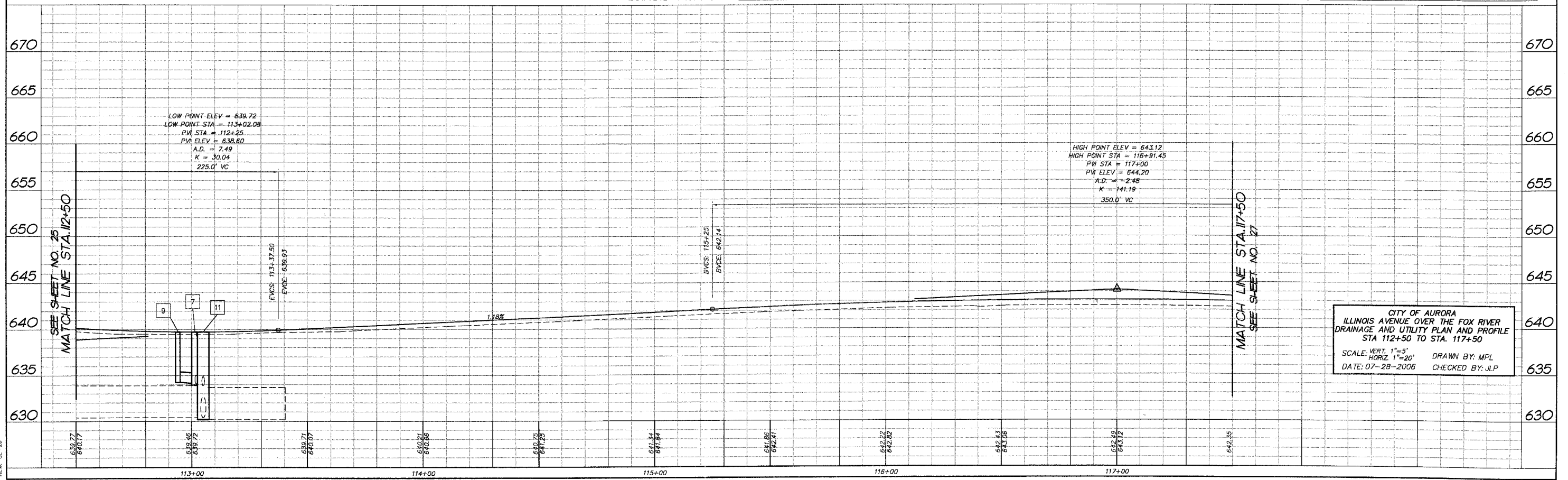
**LEGEND**

- DENOTES EXISTING STORM SEWER TO BE REMOVED, SIZE AS INDICATED.
- DENOTES STRUCTURE TO BE REMOVED (MANHOLE, VALVE VAULT, CATCH BASIN OR INLET)
- DENOTES PROPOSED DRAINAGE STRUCTURE OR STORM SEWER
- DENOTES PROPOSED WATERMAIN, OR FIRE HYDRANT
- DENOTES EXISTING STRUCTURE TO BE ADJUSTED WITH NEW TYPE 1 FRAME AND GRATE, CLOSED LID
- DENOTES PROPOSED SANITARY STRUCTURE

**STORM SEWER TAGS**

<p>3. INLET TA T11 F&amp;G STA. 112+94, 27.5' L T/C = 639.65 INV = 634.76 (E) 12"</p> <p>4. 6 LF STORM SEWER CLASS A, TYPE 2, 12 @ 1.00% (TBF = 1 CY)</p> <p>5. OB TA 4' DIA. T11 F&amp;G STA. 113+02, 27.5' L T/C = 639.64 INV = 634.70 (W) 12" INV = 634.60 (S) 12"</p>	<p>6. 54 LF STORM SEWER CLASS A, TYPE 2, 12 @ 1.00% (TBF = 55 CY)</p> <p>7. OB TA 4' DIA. T11 F&amp;G STA. 113+02, 27.5' R T/C = 639.64 INV = 634.06 (N) 12" INV = 633.96 (S) 12" INV = 634.16 (W) 12"</p> <p>8. 6 LF STORM SEWER CLASS A, TYPE 2, 12 @ 1.00% (TBF = 1 CY)</p>	<p>9. INLET TA T11 F&amp;G STA. 112+94, 27.5' R T/C = 639.65 INV = 634.22 (E) 12"</p> <p>10. 6 LF STORM SEWER CLASS A, TYPE 2, 12 @ 1.00% (TBF = 2 CY)</p> <p>11. MH TA 5' DIA. T1F CL STA. 113+05, 35' R RIM = 639.72 INV = 630.39 (W) TIE EXIST. 42\"/&gt; </p>
---	--	---

ILLINOIS AVENUE



CITY OF AURORA  
ILLINOIS AVENUE OVER THE FOX RIVER  
DRAINAGE AND UTILITY PLAN AND PROFILE  
STA 112+50 TO STA. 117+50  
SCALE: VERT. 1"=5'  
HORIZ. 1"=20'  
DATE: 07-28-2006  
DRAWN BY: MPL  
CHECKED BY: JLP

COMP. FILE: 050181-6026.dwg  
PLOT FILE: 050181-6026.plt  
VIEW: CE-28