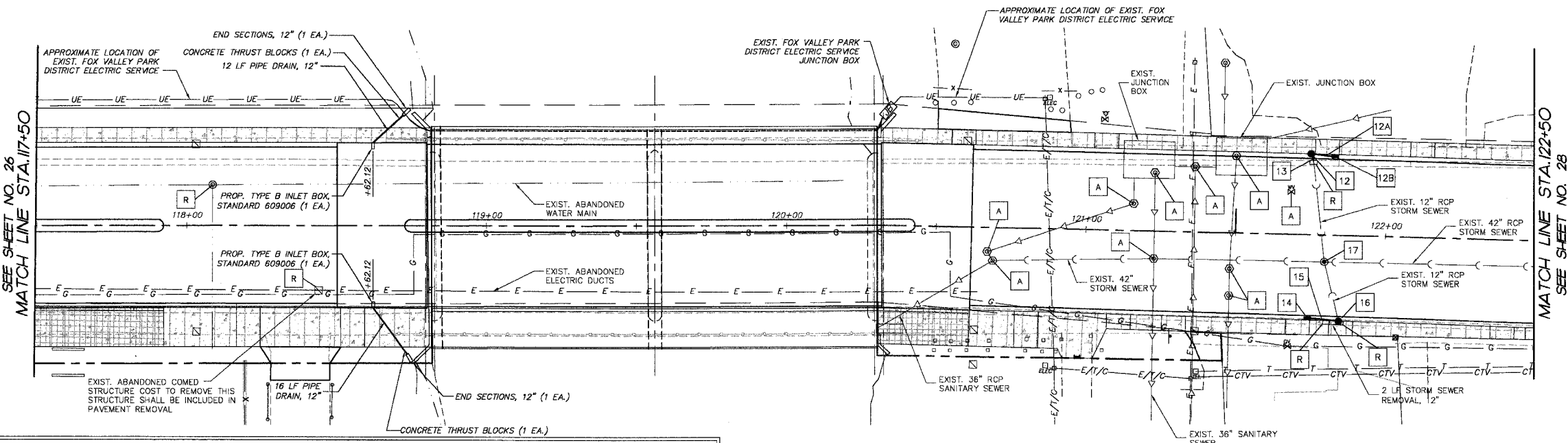


| F.A.P. RTE. | SECTION | COUNTY | TOTAL SHEETS | SHEET NO. |
|-----------------------|----------------|----------------|--------------|-----------------|
| 1517 | 03-00247-00-BR | KANE | 121 | 27 |
| STA. 117+50 | | TO STA. 122+50 | | |
| FED. ROAD DIST. NO. 1 | | ILLINOIS | | HIGHWAY PROJECT |
| CONTRACT #: 83867 | | | | |



NOTES

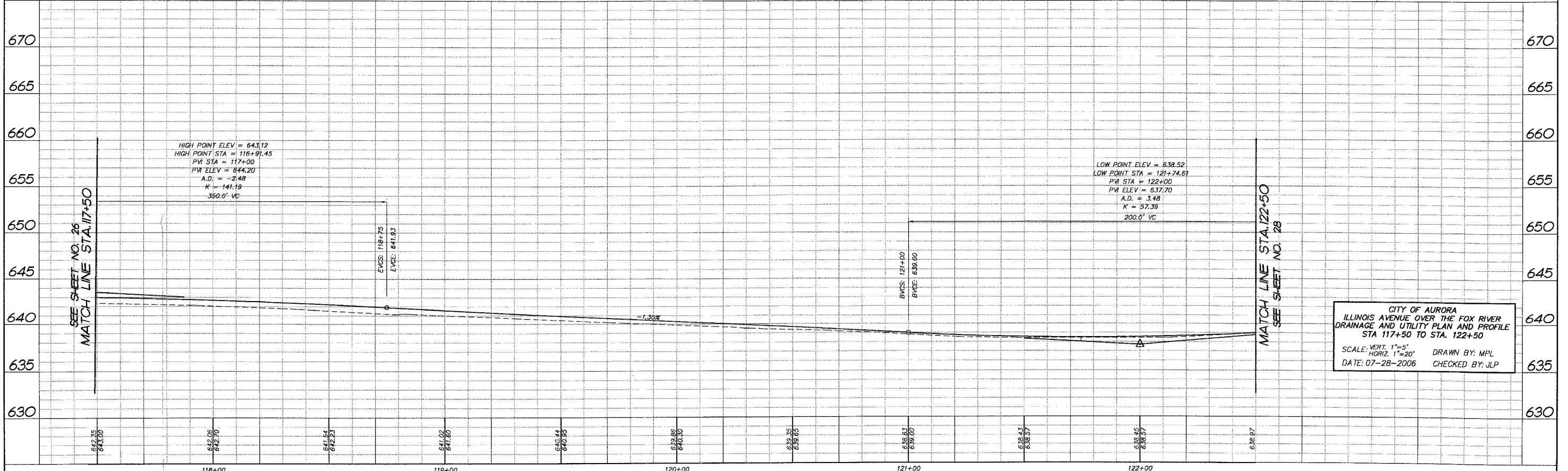
- WORK TO CONNECT EXIST. PIPES TO PROPOSED STRUCTURES SHALL NOT BE PAID FOR SEPARATELY, BUT SHALL BE INCLUDED IN THE COST FOR THE PROPOSED STRUCTURE PAY ITEM.
- WORK TO CONNECT PROP. STORM SEWER TO EXIST. STORM SEWER WILL NOT BE PAID FOR SEPARATELY, BUT SHALL BE INCLUDED IN THE CONTRACT UNIT PRICE OF THE ITEM "STORM SEWER" OF THE TYPE AND SIZE SPECIFIED.

LEGEND

- DENOTES EXISTING STORM SEWER TO BE REMOVED, SIZE AS INDICATED.
- R DENOTES STRUCTURE TO BE REMOVED (MANHOLE, VALVE VAULT, CATCH BASIN, INLET OR HANDHOLE)
- # DENOTES PROPOSED DRAINAGE STRUCTURE OR STORM SEWER
- ⊙ DENOTES PROPOSED WATERMAIN, OR FIRE HYDRANT
- A DENOTES EXISTING STRUCTURE TO BE ADJUSTED WITH NEW TYPE 1 FRAME AND GRATE, CLOSED LID
- △ DENOTES PROPOSED SANITARY STRUCTURE

STORM SEWER TAGS

| | | |
|--|---|--|
| 12. CB TA 4' DIA. T11 F&G STA. 121+74.61, 26.7' L T/C = 6.38.48 INV = 6.33.70 (S) 12" | 15. 8 LF STORM SEWER, CLASS A, TYPE 2 12 @ 1.00% (TBF = 1 CY) | 12A. 6 LF STORM SEWER, CLASS A, TYPE 2 12 @ 1.00% (TBF = 1 CY) |
| 13. 4 LF STORM SEWER, CLASS A, TYPE 2 12 @ 1.00% (TBF = 1 CY) CONNECT TO EXIST. 12" RCP STORM SEWER (SEE NOTE 2) | 16. CB TA 4' DIA. T11 F&G STA. 121+65, 28.7' R T/C = 6.38.42 INV = 6.33.82 (W) 12" INV = 6.33.47 (N) TIE EXIST. 12" RCP STORM SEWER INTO PROP. CB (SEE NOTE 1) | 12B. INLET TA T11 F&G STA. 121+82.61, 26.7' L T/C = 6.38.45 INV = 6.33.76 (W) 12" |
| 14. INLET TA 2' DIA. T11 F&G STA. 121+74.61, 28.6' R T/C = 6.38.42 INV = 6.33.90 (E) 12" | 17. MH TA 5' DIA T1F CL STA. = 121+81.5, 9' R RIM = 6.38.34 INV = 6.30.80 (W) TIE EXIST. 42" RCP STORM SEWER INTO PROP. MH INV = 6.31.00 (E) TIE EXIST. 42" RCP STORM SEWER INTO PROP. MH EXIST. STORM SEWER NORTH & SOUTH MAKES BLIND CONNECTION TO EXIST. 42" RCP STORM SEWER—MATCH INVERTS AT PROP. MANHOLE (SEE NOTE 1.) | |



CITY OF AURORA
ILLINOIS AVENUE OVER THE FOX RIVER
DRAINAGE AND UTILITY PLAN AND PROFILE
STA 117+50 TO STA. 122+50
SCALE: VERT. 1"=5'
HORIZ. 1"=20'
DATE: 07-28-2006
DRAWN BY: MPL
CHECKED BY: JLP

| DATE | BY | FINAL SURVEY PLOTTED | NOTE BOOK TEMPLATE AREAS CHECKED |
|------|----|----------------------|----------------------------------|
| | | | |

COMP. FILE: 090781-602b.dwg
PLOT FILE:
VER: CE-27