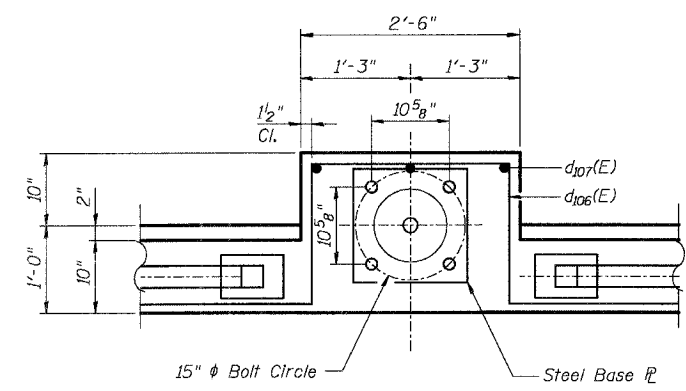
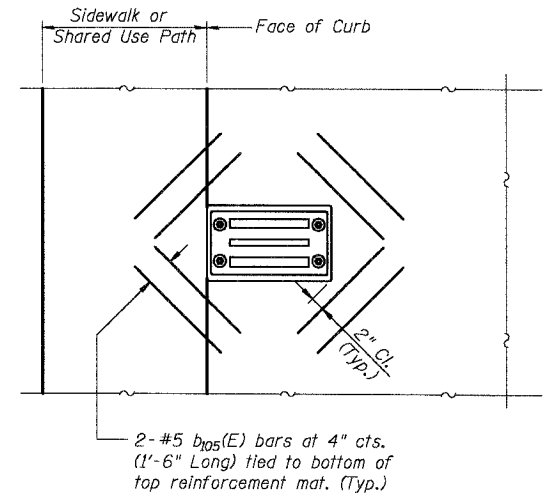


**SECTION - DETAIL 1**

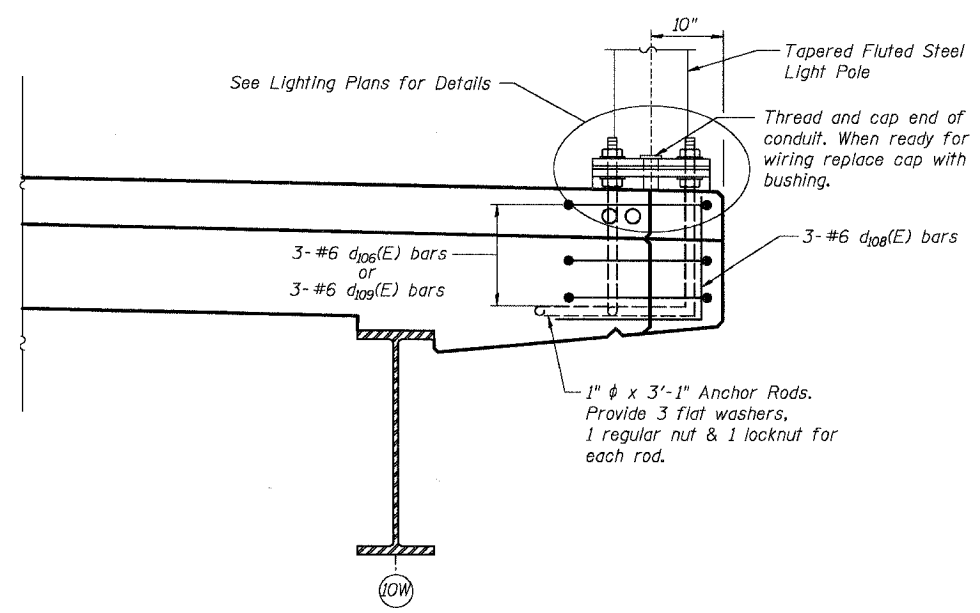


**PLAN - DETAIL 1**

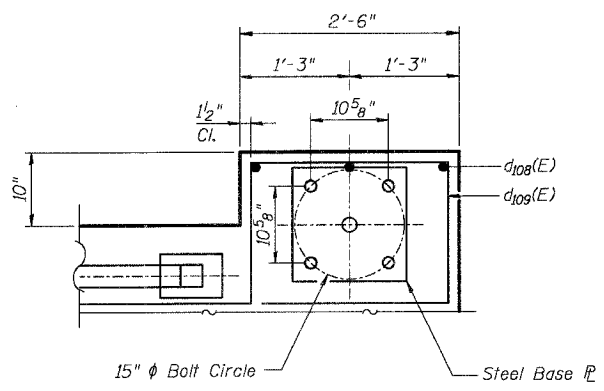


**SCUPPER DETAIL - PLAN**

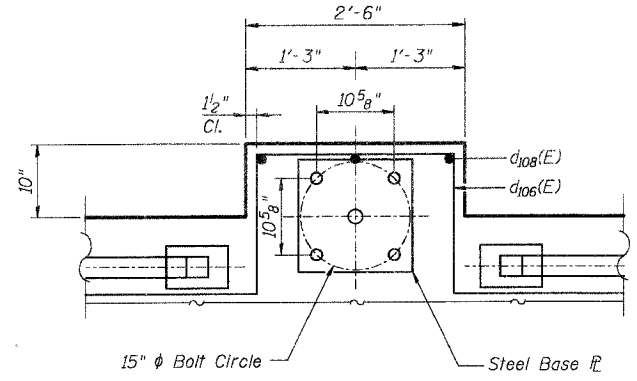
**LIGHT POLE MOUNTED ON CONCRETE PARAPET DETAILS**



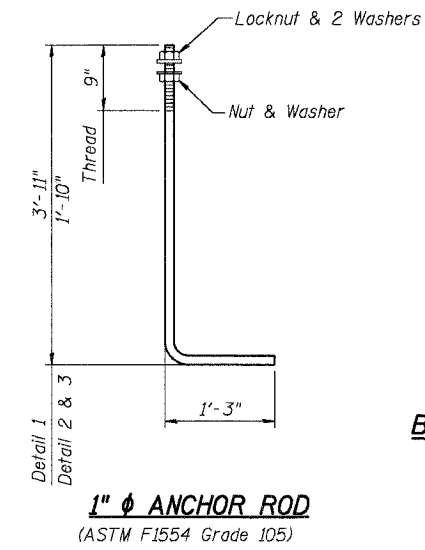
**SECTION - DETAIL 2 & 3**



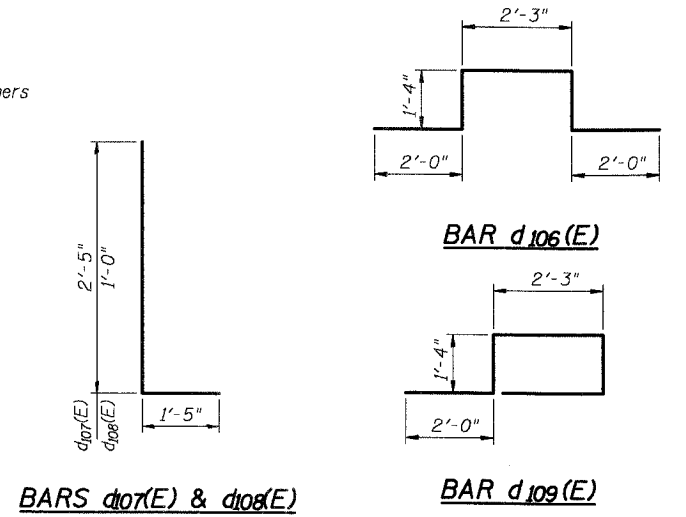
**PLAN - DETAIL 3**



**PLAN - DETAIL 2**



**1" ANCHOR ROD**  
(ASTM F1554 Grade 105)



**BARS d107(E) & d108(E)**

**BAR d109(E)**

**NOTES:**  
Work this sheet with sheets SW-10 through SW-13.  
For Bill of Material see Sheet SW-11.

DESIGNED	AEU
CHECKED	RGD
DRAWN	WJH
CHECKED	NRF

REVISIONS	
NAME	DATE

SMITH ENGINEERING CONSULTANTS, INC.  
CIVIL/STRUCTURAL ENGINEERS AND SURVEYORS  
2401 N. Lincoln Hwy., Aurora, IL 60007  
630-584-7700

CITY OF AURORA  
SUPERSTRUCTURE DETAILS IV  
111 ILLINOIS AVENUE  
OVER THE FOX RIVER  
SECTION NO. 03-00247-00-BR  
KANE COUNTY  
STRUCTURE NO. 045-6009  
DATE 7-28-2006

CONTRACT NO. 03-00247-00-BR SHEET 55 OF 55  
 PROJECT CONTACT: W. J. HANCOCK  
 DRAWING NO. SW-14  
 DATE: 7-28-2006