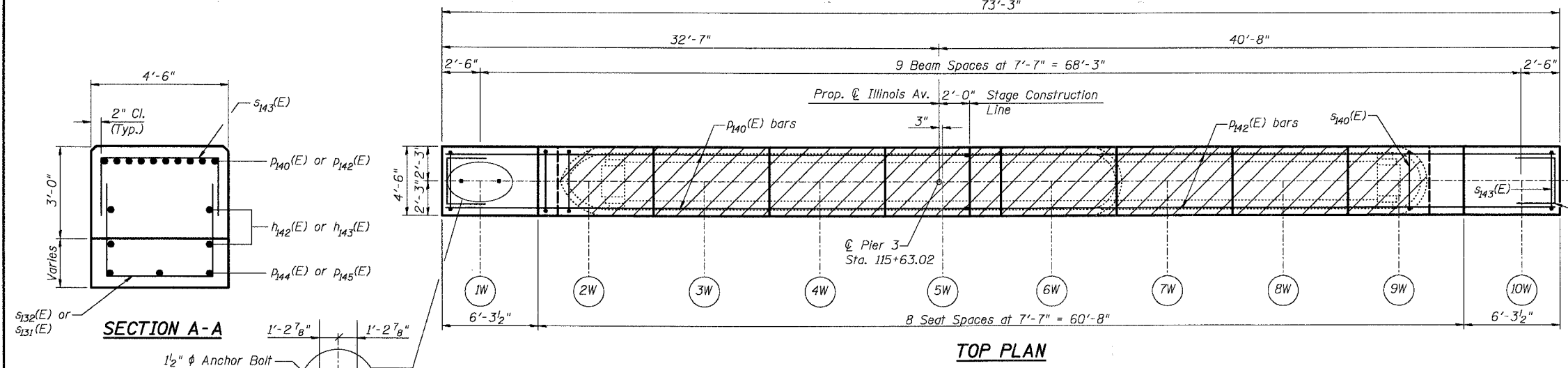
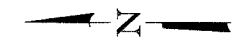
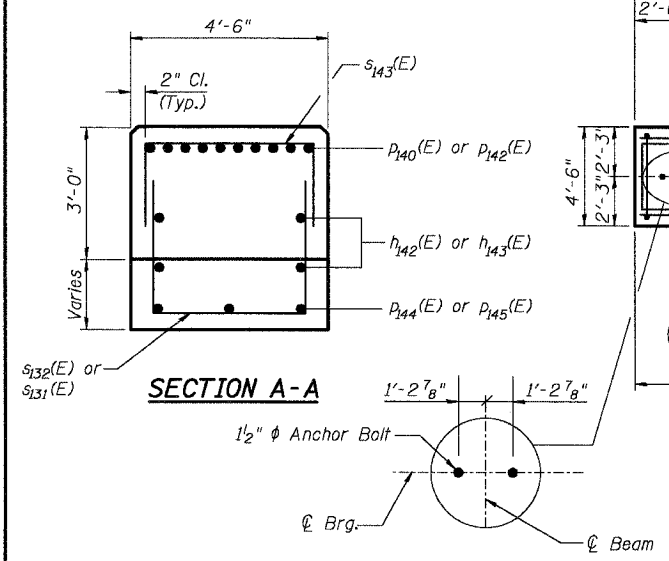


CONTRACT #83867



BEAM SEAT ELEVATION TABLE

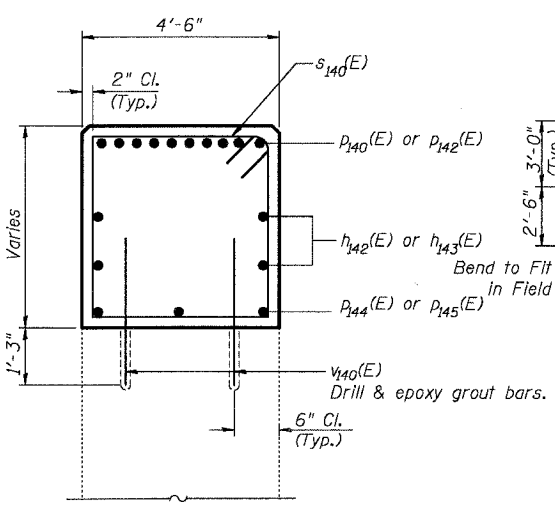
Beam #	1W	2W	3W	4W	5W	6W	7W	8W	9W	10W
Seat Elevation	638.18	638.34	638.50	638.62	638.73	638.62	638.49	638.33	638.17	638.02



ANCHOR BOLT DETAIL

LEGEND:

- Indicates Concrete Removal Areas
- Indicates Epoxy Crack Sealing (Near Face)
- Indicates Epoxy Crack Sealing (Far Face)

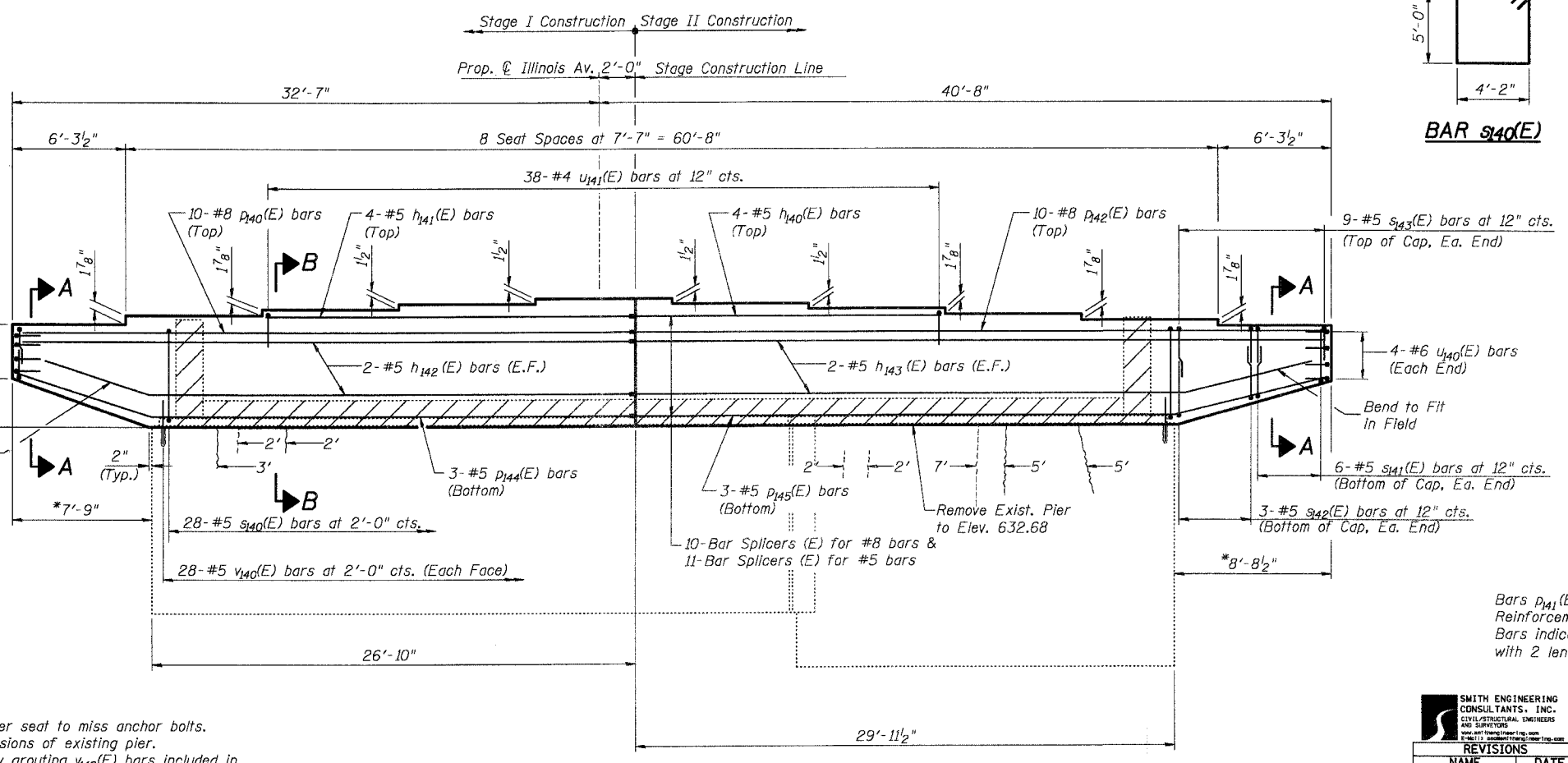


SECTION B-B

NOTES:

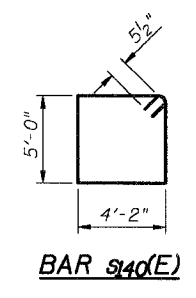
- Space reinforcement in pier seat to miss anchor bolts.
- Contractor to verify dimensions of existing pier.
- Cost for drilling and epoxy grouting U140(E) bars included in cost of Reinforcement Bars, Epoxy Coated.

DESIGNED	AEU
CHECKED	RGD
DRAWN	WJH
CHECKED	NRF



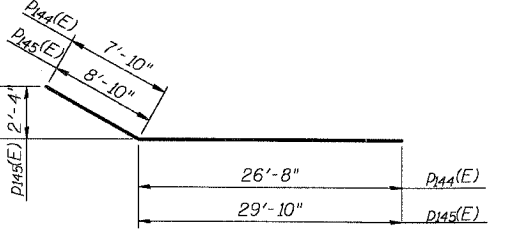
ELEVATION
Looking East

*Measured Along C of Pier



BAR S140(E)

**BARS S143 (E), S141 (E), S142 (E)
U140 (E) & U141 (E)**



BARS P144 (E) & P145 (E)

**BILL OF MATERIAL
PIER 3**

Bar	No.	Size	Length	Shape
h140 (E)	4	#5	16'-10"	—
h141 (E)	4	#5	20'-3"	—
h142 (E)	4	#5	34'-3"	—
h143 (E)	4	#5	38'-4"	—
P140 (E)	10	#8	34'-3"	—
P142 (E)	10	#8	38'-4"	—
P144 (E)	3	#5	34'-6"	—
P145 (E)	3	#5	38'-8"	—
S140 (E)	28	#5	19'-3"	□
S141 (E)	12	#5	9'-8"	□
S142 (E)	6	#5	10'-8"	□
S143 (E)	18	#5	9'-8"	□
U140 (E)	8	#6	9'-4"	□
U141 (E)	38	#4	5'-10"	□
U140 (E)	56	#5	2'-10"	—
Reinforcement Bars, Epoxy Coated		Pound	3,980	
Concrete Removal		Cu. Yd.	13.7	
Concrete Structures		Cu. Yd.	66.6	
Epoxy Crack Sealing		Foot	28	

Bars P141 (E) & P143 (E) are not used.
Reinforcement bars designated (E) shall be epoxy coated.
Bars indicated thus 1 x 2 - #5 etc. indicates 1 line of bars with 2 lengths per line.

SMITH ENGINEERING CONSULTANTS, INC.
CIVIL/STRUCTURAL ENGINEERS AND SURVEYORS
www.smitheng.com
1001 E. 1st Street, Aurora, IL 60018

REVISIONS	
NAME	DATE

CITY OF AURORA

**PIER 3 DETAILS
ILLINOIS AVENUE
OVER THE FOX RIVER
SECTION NO. 03-00247-00-BR
KANE COUNTY
STRUCTURE NO. 045-6009**

DATE 7-28-2006