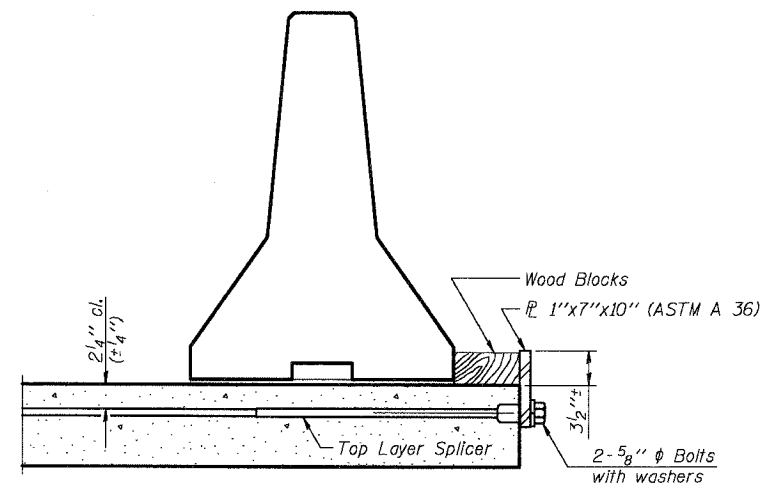


NOTES

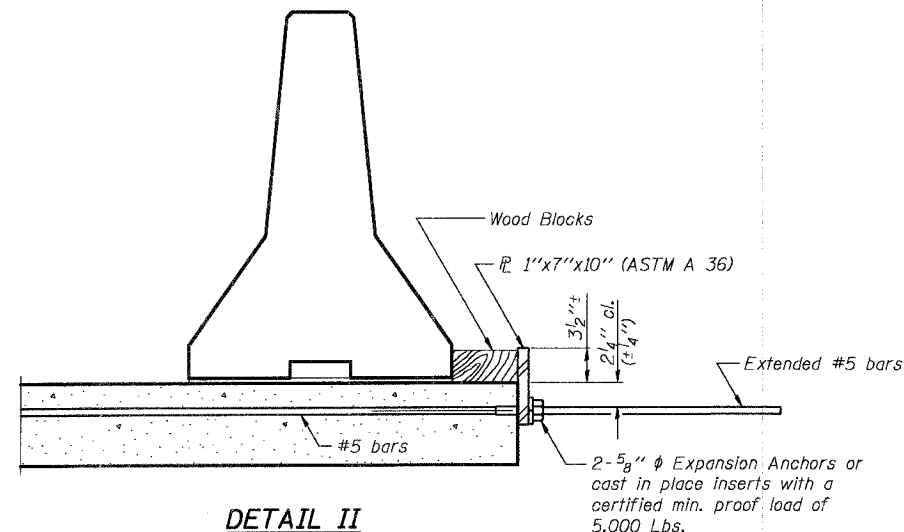
Detail I - With Bar Splicer or Couplers:
Connect one (1) 1"x7"x10" steel plate to the top layer of couplers with 2-5/8" φ bolts screwed to coupler at approximate center of each barrier panel.

Detail II - With Extended Reinforcement Bars:
Connect one (1) 1"x7"x10" steel plate to the concrete slab with 2-5/8" φ Expansion Anchors or cast in place inserts spaced between the top layer of reinforcement at approximate center of each barrier panel.

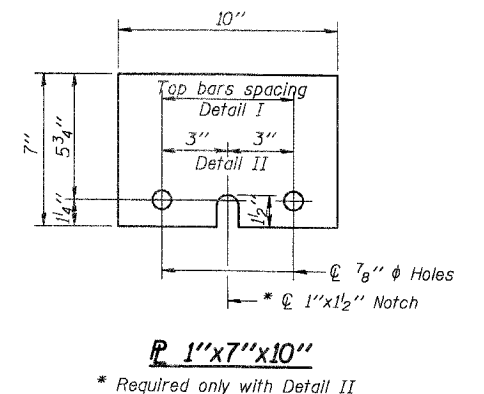
Cost of anchorage is included with Temporary Concrete Barrier.



The 1"x7"x10" Plate shall not be removed until Stage II Construction forms and reinforcement bars are in place.



The 1"x7"x10" Plate shall not be removed until Stage II Construction forms and all reinforcement bars are in place and the concrete is ready to be placed.



DESIGNED	AEU
CHECKED	RGD
DRAWN	WJH
CHECKED	NRF

SMITH ENGINEERING CONSULTANTS, INC. CIVIL, STRUCTURAL, ELECTRICAL AND SURVEYING www.smitheng.com 11011 Woodfield Drive, Suite 100, Naperville, IL 60563	
REVISIONS	
NAME	DATE

CITY OF AURORA

TEMPORARY CONCRETE BARRIER
PEDESTRIAN TUNNEL
ILLINOIS AVENUE
OVER THE FOX RIVER
SECTION NO. 03-00247-00-BR
KANE COUNTY

DATE: 7-28-2006

PROJECT NO. 03-00247-00-BR
 SHEET NO. ST-12
 CONTRACT #83867
 DATE: 7-28-2006