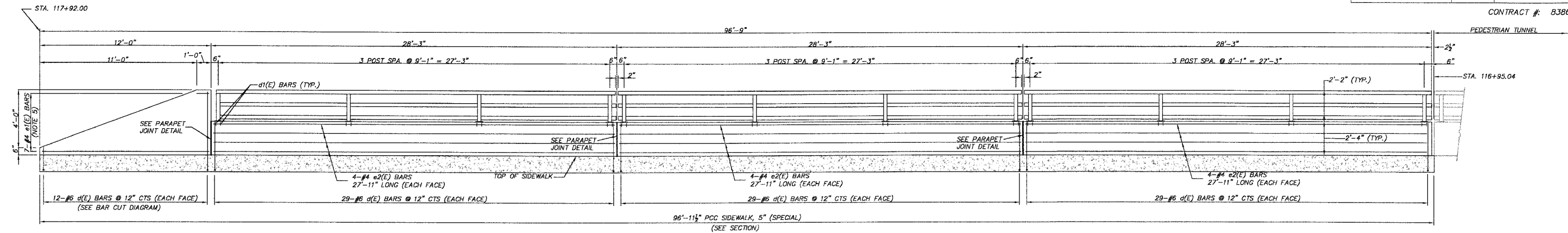
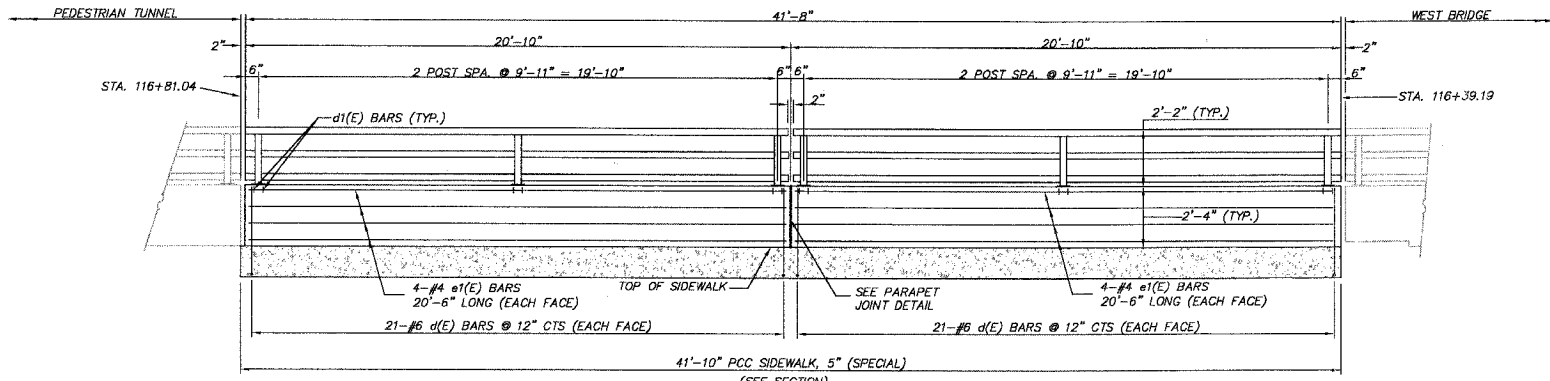


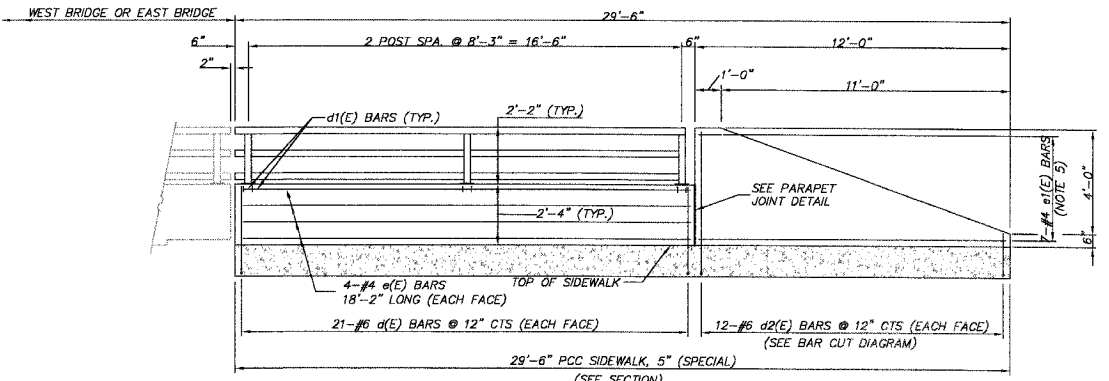
F.A.P. RTE.	SECTION	COUNTY	TOTAL SHEETS	SHEET NO.
1517	03-00247-00-BR	KANE	121	116
STA.	TO STA.			
FED. ROAD DIST. NO. 1	ILLINOIS	HIGHWAY PROJECT		
CONTRACT #: 83867				



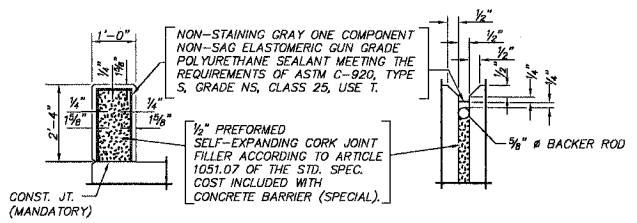
ELEVATION
LOOKING AT ROADWAY FACE
STA. 116+95.04 TO STA. 117+92



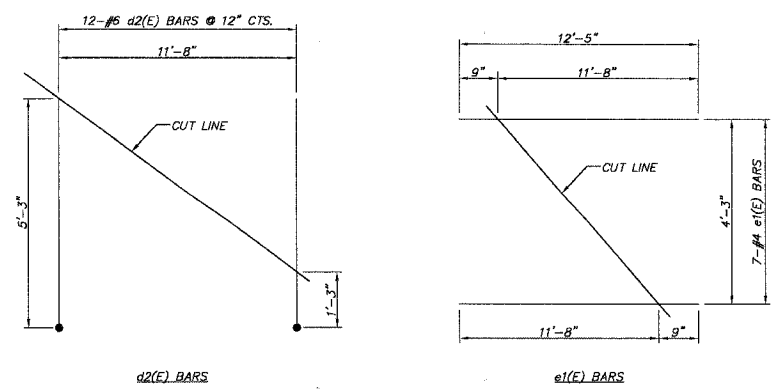
ELEVATION
LOOKING AT ROADWAY FACE
STA. 116+39.19 TO STA. 116+81.04



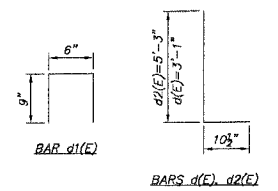
ELEVATION
LOOKING AT ROADWAY FACE
STA. 113+06.72 TO STA. 113+36.72
STA. 120+31.83 TO STA. 120+61.83 (OPPOSITE HAND)



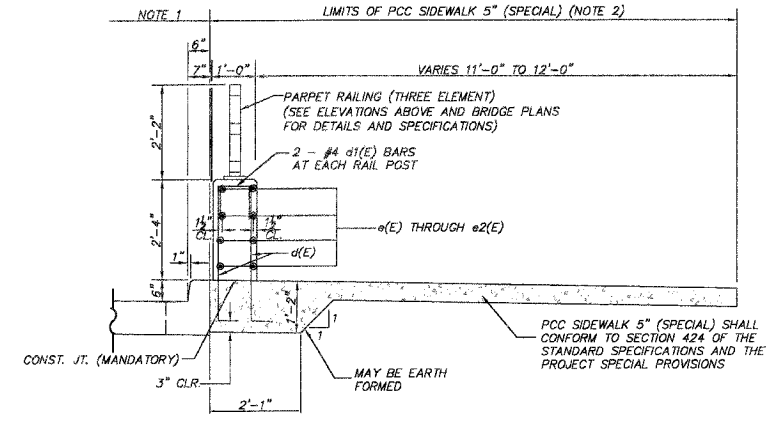
PARAPET JOINT DETAILS



BAR CUT DIAGRAMS



BAR BEND DETAILS



SECTION

- NOTES
- BRIDGE APPROACH PAVEMENT STA. 113+06.72 TO STA. 113+36.72, STA. 116+39.19 TO STA. 116+89.19, AND STA. 120+31.38 TO STA. 120+61.83. BRIDGE APPROACH PAVEMENT (SPECIAL) STA. 116+89.19 TO 116+81.54 AND STA. 116+84.54 TO STA. 117+09.54. PCC PAVEMENT 10" (JOINTED) AND COMB. CONC. CURB AND GUTTER, TYPE B-6.12 STA. 117+09.54 TO STA. 117+92
 - 12'-1" STA. 113+06.72 TO STA. 113+36.72 AND STA. 120+31.83 TO STA. 120+61.83 13'-1" STA. 116+39.19 TO STA. 116+81.54 AND STA. 116+84.54 TO STA. 117+92
 - d(E) AND d2(E) BARS SHALL NOT BE PAID FOR SEPARATELY, BUT SHALL BE INCLUDED IN THE ITEM "PCC SIDEWALK, 5" (SPECIAL)."
 - d1(E) BARS, e(E) BARS, AND THE 3 ELEMENT PARAPET RAILING SHALL NOT BE PAID FOR SEPARATELY, BUT SHALL BE INCLUDED IN THE ITEM "CONCRETE BARRIER (SPECIAL)."
 - PROVIDE e1(E) BARS FULL LENGTH AND TRIM IN ACCORDANCE WITH BAR CUT DIAGRAM MAINTAINING 1 1/2" CLEAR COVER. USE REMAINDER IN OPPOSITE FACE.

REVISIONS	
NO.	DATE
7.	
6.	
5.	
4.	
3.	
2.	
1.	

SMITH ENGINEERING CONSULTANTS, INC.
CIVIL/STRUCTURAL ENGINEERS AND SURVEYORS
4000 PRIME PARKWAY, SUITE 201
MCHENRY, ILLINOIS 60050
PH: 815-385-1778 FAX: 815-385-1781
www.smithengineering.com E-MAIL: sec@smithengineering.com
MCHENRY YORKVILLE
ILLINOIS PROFESSIONAL DESIGN FIRM # 184-000108

ILLINOIS DEPARTMENT OF TRANSPORTATION
CITY OF AURORA
ILLINOIS AVENUE OVER THE FOX RIVER
PCC SIDEWALK 5" (SPECIAL) AND CONCRETE
BARRIER (SPECIAL) DETAIL

SCALE: "NTS"
DATE 07-28-2006
DRAWN BY CFR
CHECKED BY JLP

PLOT FILE: STANDARD
CONV. FILE: 050181-6096.dwg