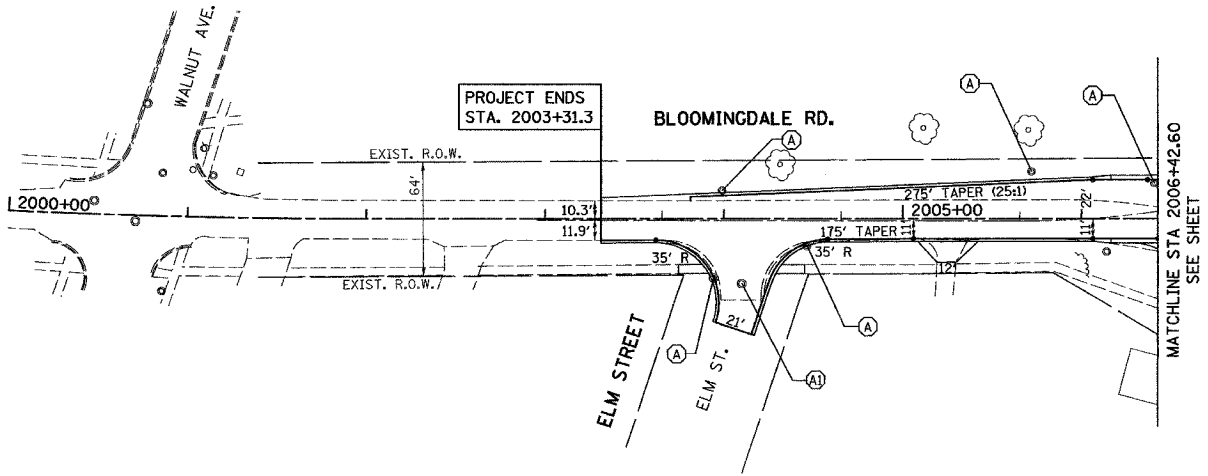


| F.A.U. RTE.         | SECTION  | COUNTY           | TOTAL SHEETS | SHEET NO. |
|---------------------|----------|------------------|--------------|-----------|
| 1321                | 0711 N-1 | DUPAGE           | 54           | 19        |
| STA.                |          | TO STA.          |              |           |
| FED. ROAD DIST. NO. | ILLINOIS | FED. AID PROJECT |              |           |

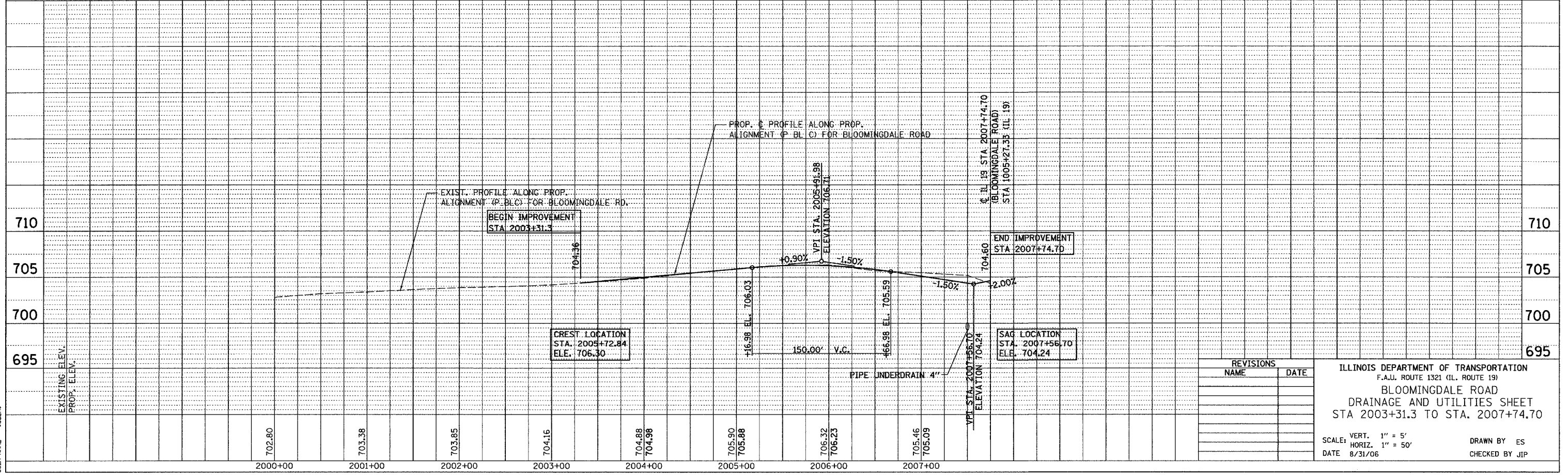


- (A) FRAMES AND GRATES TO BE ADJUSTED
- (AI) FRAMES AND GRATES TO BE ADJUSTED, SPECIAL

|      |      |
|------|------|
| PLAN | DATE |
| NO.  |      |
| BY   |      |
| DATE |      |
| NO.  |      |
| BY   |      |
| DATE |      |
| NO.  |      |

|         |      |
|---------|------|
| PROFILE | DATE |
| NO.     |      |
| BY      |      |
| DATE    |      |
| NO.     |      |

PLOT DATE = 8/31/06  
 FILE NAME = D:\PROJECTS\Bloom\Bloom\Plan\Proposed\Plans\Rev Green\Plan\Profile\Profile.dwg  
 PLOT SCALE = 1/8"=1'-0"  
 USER NAME = #UBER#



| REVISIONS |      |
|-----------|------|
| NAME      | DATE |
|           |      |
|           |      |
|           |      |
|           |      |

ILLINOIS DEPARTMENT OF TRANSPORTATION  
 F.A.U. ROUTE 1321 (IL. ROUTE 19)  
**BLOOMINGDALE ROAD**  
 DRAINAGE AND UTILITIES SHEET  
 STA 2003+31.3 TO STA. 2007+74.70

VERT. 1" = 5'  
 SCALE: HORIZ. 1" = 50'  
 DATE 8/31/06

DRAWN BY ES  
 CHECKED BY JJP