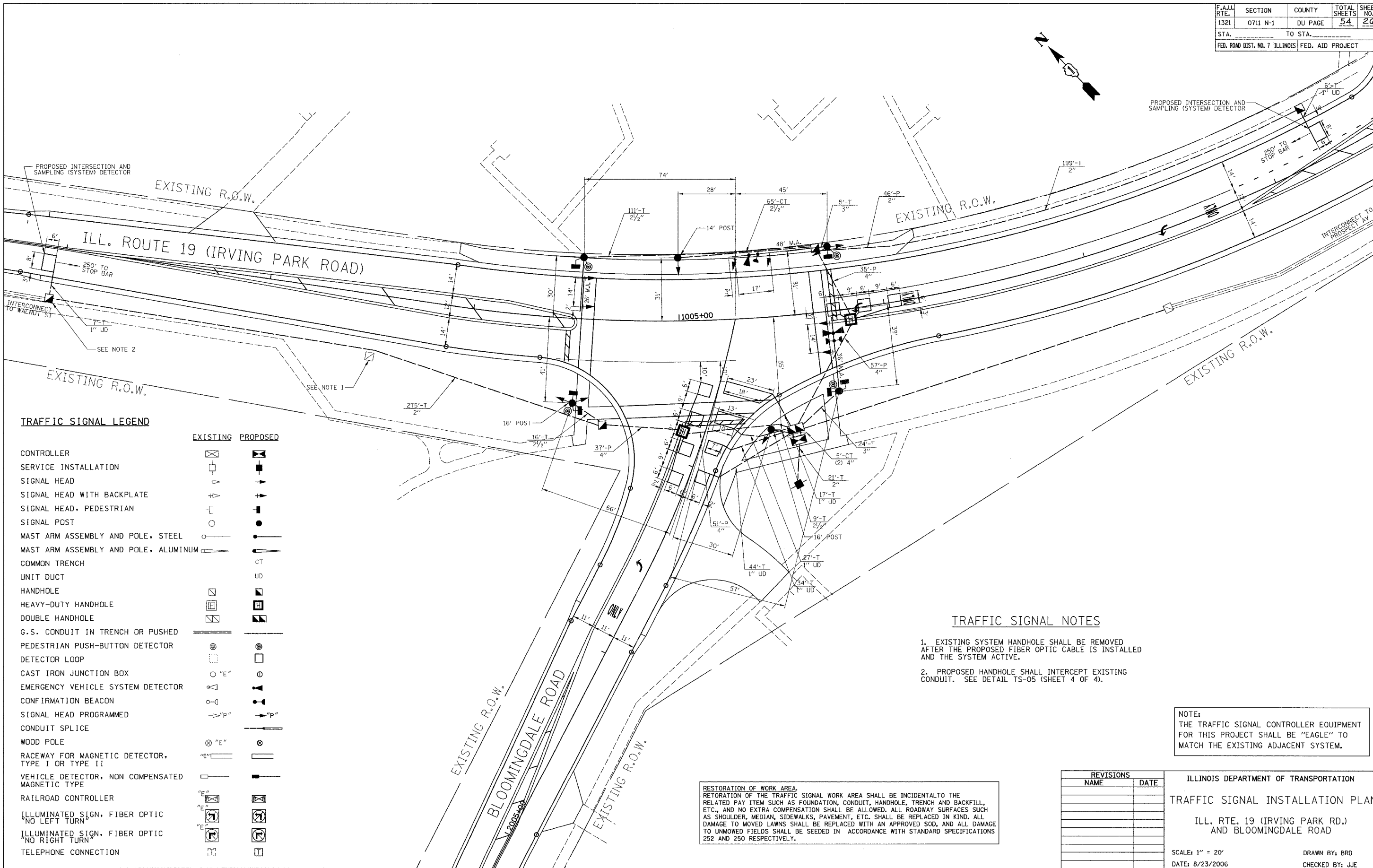
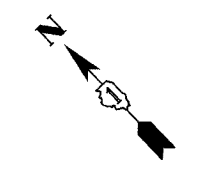


| | | | | |
|---|----------|---------|--------------|-----------|
| F.A.U. RTE. | SECTION | COUNTY | TOTAL SHEETS | SHEET NO. |
| 1321 | 0711 N-1 | DU PAGE | 54 | 26 |
| STA. | | TO STA. | | |
| FED. ROAD DIST. NO. 7 ILLINOIS FED. AID PROJECT | | | | |



TRAFFIC SIGNAL LEGEND

| | EXISTING | PROPOSED |
|--|----------|----------|
| CONTROLLER | [Symbol] | [Symbol] |
| SERVICE INSTALLATION | [Symbol] | [Symbol] |
| SIGNAL HEAD | [Symbol] | [Symbol] |
| SIGNAL HEAD WITH BACKPLATE | [Symbol] | [Symbol] |
| SIGNAL HEAD, PEDESTRIAN | [Symbol] | [Symbol] |
| SIGNAL POST | [Symbol] | [Symbol] |
| MAST ARM ASSEMBLY AND POLE, STEEL | [Symbol] | [Symbol] |
| MAST ARM ASSEMBLY AND POLE, ALUMINUM | [Symbol] | [Symbol] |
| COMMON TRENCH | [Symbol] | CT |
| UNIT DUCT | [Symbol] | UD |
| HANDHOLE | [Symbol] | [Symbol] |
| HEAVY-DUTY HANDHOLE | [Symbol] | [Symbol] |
| DOUBLE HANDHOLE | [Symbol] | [Symbol] |
| G.S. CONDUIT IN TRENCH OR PUSHED | [Symbol] | [Symbol] |
| PEDESTRIAN PUSH-BUTTON DETECTOR | [Symbol] | [Symbol] |
| DETECTOR LOOP | [Symbol] | [Symbol] |
| CAST IRON JUNCTION BOX | "E" | [Symbol] |
| EMERGENCY VEHICLE SYSTEM DETECTOR | [Symbol] | [Symbol] |
| CONFIRMATION BEACON | [Symbol] | [Symbol] |
| SIGNAL HEAD PROGRAMMED | "P" | [Symbol] |
| CONDUIT SPLICE | [Symbol] | [Symbol] |
| WOOD POLE | "E" | [Symbol] |
| RACEWAY FOR MAGNETIC DETECTOR, TYPE I OR TYPE II | "E" | [Symbol] |
| VEHICLE DETECTOR, NON COMPENSATED MAGNETIC TYPE | [Symbol] | [Symbol] |
| RAILROAD CONTROLLER | [Symbol] | [Symbol] |
| ILLUMINATED SIGN, FIBER OPTIC "NO LEFT TURN" | [Symbol] | [Symbol] |
| ILLUMINATED SIGN, FIBER OPTIC "NO RIGHT TURN" | [Symbol] | [Symbol] |
| TELEPHONE CONNECTION | [Symbol] | [Symbol] |

TRAFFIC SIGNAL NOTES

- EXISTING SYSTEM HANDHOLE SHALL BE REMOVED AFTER THE PROPOSED FIBER OPTIC CABLE IS INSTALLED AND THE SYSTEM ACTIVE.
- PROPOSED HANDHOLE SHALL INTERCEPT EXISTING CONDUIT. SEE DETAIL TS-05 (SHEET 4 OF 4).

NOTE:
THE TRAFFIC SIGNAL CONTROLLER EQUIPMENT FOR THIS PROJECT SHALL BE "EAGLE" TO MATCH THE EXISTING ADJACENT SYSTEM.

RESTORATION OF WORK AREA.
RESTORATION OF THE TRAFFIC SIGNAL WORK AREA SHALL BE INCIDENTAL TO THE RELATED PAY ITEM SUCH AS FOUNDATION, CONDUIT, HANDHOLE, TRENCH AND BACKFILL, ETC., AND NO EXTRA COMPENSATION SHALL BE ALLOWED. ALL ROADWAY SURFACES SUCH AS SHOULDER, MEDIAN, SIDEWALKS, PAVEMENT, ETC. SHALL BE REPLACED IN KIND. ALL DAMAGE TO MOVED LAWNS SHALL BE REPLACED WITH AN APPROVED SOD, AND ALL DAMAGE TO UNMOWED FIELDS SHALL BE SEEDED IN ACCORDANCE WITH STANDARD SPECIFICATIONS 252 AND 250 RESPECTIVELY.

| REVISIONS | |
|-----------|------|
| NAME | DATE |
| | |
| | |
| | |
| | |
| | |

ILLINOIS DEPARTMENT OF TRANSPORTATION
TRAFFIC SIGNAL INSTALLATION PLAN
ILL. RTE. 19 (IRVING PARK RD.)
AND BLOOMINGDALE ROAD
SCALE: 1" = 20'
DATE: 8/23/2006
DRAWN BY: BRD
CHECKED BY: JJE

PLOT DATE = #DATE#
PLOT SCALE = #SCALE#
REFERENCE = #REF#