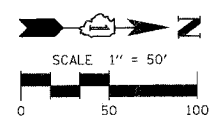
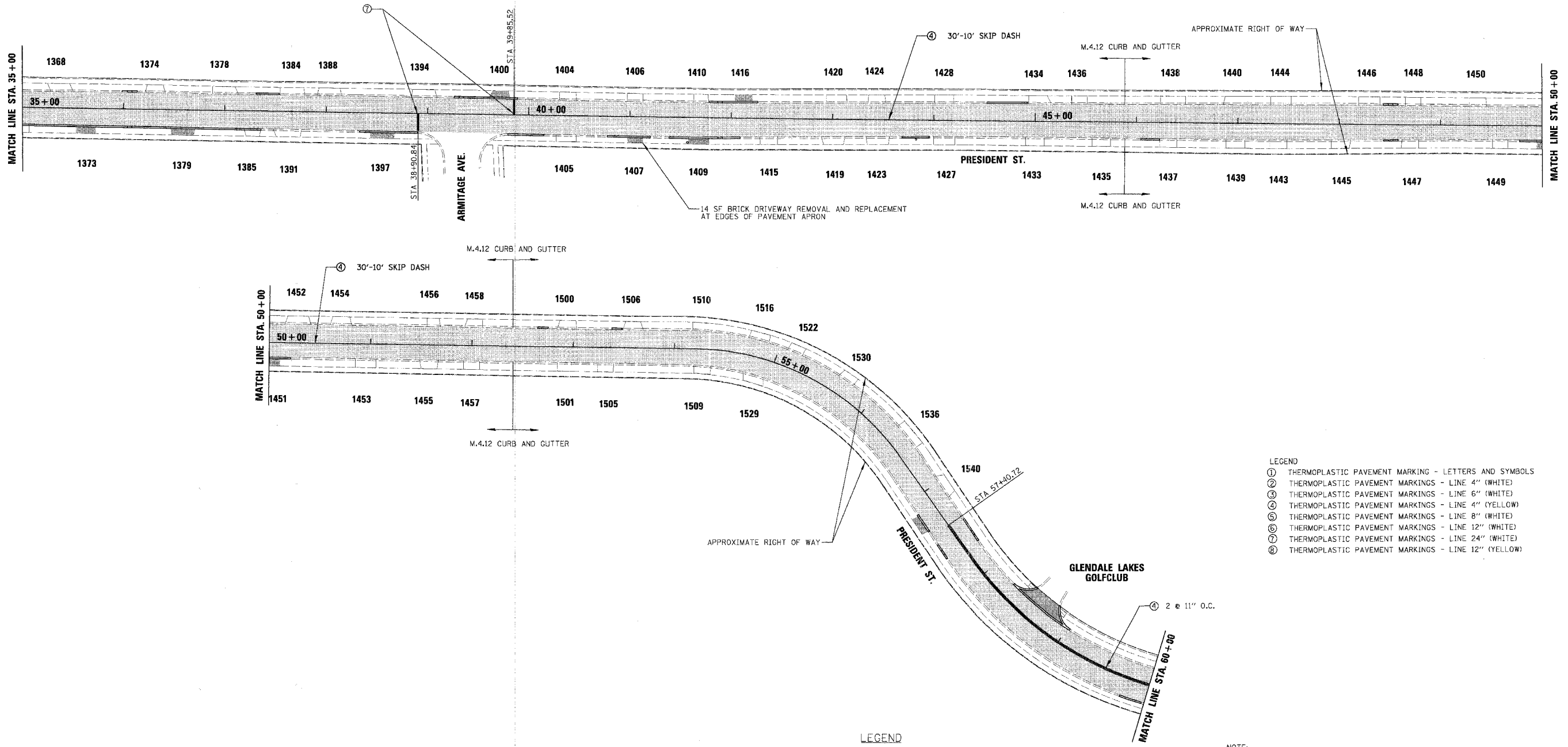


F.A. RITE.	SECTION	COUNTY	TOTAL SHEETS	SHEET NO.
	05-00052-00-RS	DUPAGE	18	10
STA. 35+00		TO STA. 60+00		
FED. ROAD DIST. NO.		ILLINOIS FED. AID PROJECT		
CONTRACT NO. 83877				



DATE: _____ BY: _____
 CHECKED: _____
 DATE: _____ BY: _____
 DATE: _____ BY: _____
CHRISTOPHER B. BURKE ENGINEERING LTD.
 9575 West Higgins Road, Suite 600
 Rosemont, Illinois 60018
 (847) 823-0500



- LEGEND**
- ① THERMOPLASTIC PAVEMENT MARKING - LETTERS AND SYMBOLS
 - ② THERMOPLASTIC PAVEMENT MARKINGS - LINE 4" (WHITE)
 - ③ THERMOPLASTIC PAVEMENT MARKINGS - LINE 6" (WHITE)
 - ④ THERMOPLASTIC PAVEMENT MARKINGS - LINE 4" (YELLOW)
 - ⑤ THERMOPLASTIC PAVEMENT MARKINGS - LINE 8" (WHITE)
 - ⑥ THERMOPLASTIC PAVEMENT MARKINGS - LINE 12" (WHITE)
 - ⑦ THERMOPLASTIC PAVEMENT MARKINGS - LINE 24" (WHITE)
 - ⑧ THERMOPLASTIC PAVEMENT MARKINGS - LINE 12" (YELLOW)

- LEGEND**
- POLYMERIZED LEVELING BINDER (MACHINE METHOD), IL-4.75, N50 - 3/4"
HOT-MIX ASPHALT SURFACE COURSE, MIX "C", N50 - 2 1/2"
 - CURB AND GUTTER REPLACEMENT
 - DRIVEWAY REPLACEMENT
 - SIDEWALK REPLACEMENT
 - STORM SEWER

NOTE:
 1. ALL INVERTS ARE CUTS FROM THE EXISTING RIM ELEVATION.
 2. ALL STORM SEWER, STORM SEWER REMOVAL AND STRUCTURES WILL BE LOCATED IN THE FIELD.

REVISIONS	
NAME	DATE

ILLINOIS DEPARTMENT OF TRANSPORTATION
 PRESIDENT STREET
 PROPOSED PLAN

SCALE: 1"=50'
 DATE: 10/27/2006

DRAWN BY: BEH
 CHECKED BY: LMF