

CONTRACT NO. 83880				
F.A.U. RTE.	SECTION	COUNTY	TOTAL SHEETS	SHEET NO.
0177	01-00168-06-BT	LAKE	38	1
COVER SHEET				
FED. ROAD DIST. NO. 7 ILLINOIS FED. AID PROJECT HD-8003695				

STATE OF ILLINOIS
DEPARTMENT OF TRANSPORTATION
DIVISION OF HIGHWAYS

PLANS FOR PROPOSED FEDERAL AID PROJECT
F.A.U. ROUTE 0177 (MONAVILLE ROAD – COUNTY HIGHWAY 55)
AT GRANT WOODS FOREST PRESERVE
CHAIN O' LAKES BIKE PATH UNDERPASS
SECTION 01-00168-06-BT

PROJECT NO. HD-8003(695)
BIKE PATH AND UNDERPASS CONSTRUCTION
LAKE COUNTY
C-91-031-07

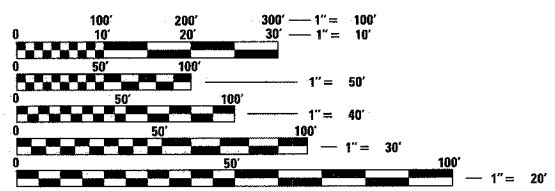


INDEX OF SHEETS

SHEET NO.	DESCRIPTION
1	TITLE SHEET, INDEX OF SHEETS
2	GENERAL NOTES
3	SUMMARY OF QUANTITIES
4	TYPICAL SECTIONS
5	SCHEDULE OF QUANTITIES
6	ALIGNMENT, TIES & BENCHMARKS
7	STAGE 1 CONSTRUCTION (TEMPORARY BIKE PATH)
8	STAGE 2 CONSTRUCTION (PERMANENT BIKE PATH)
9	STAGE 3 CONSTRUCTION (TEMPORARY BIKE PATH REMOVAL)
10	MONAVILLE ROAD PLAN & PROFILE
11	DETOUR PLAN
12	DETOUR INFORMATION SIGNS
13	EROSION CONTROL PLAN
14-21	UNDERPASS STRUCTURE PLANS
22-24	DETAILS
25-28	STAGE 1 CROSS SECTIONS
29-32	STAGE 2 CROSS SECTIONS
33-36	STAGE 3 CROSS SECTIONS
37-38	MONAVILLE ROAD CROSS SECTIONS

LIST OF STATE STANDARDS

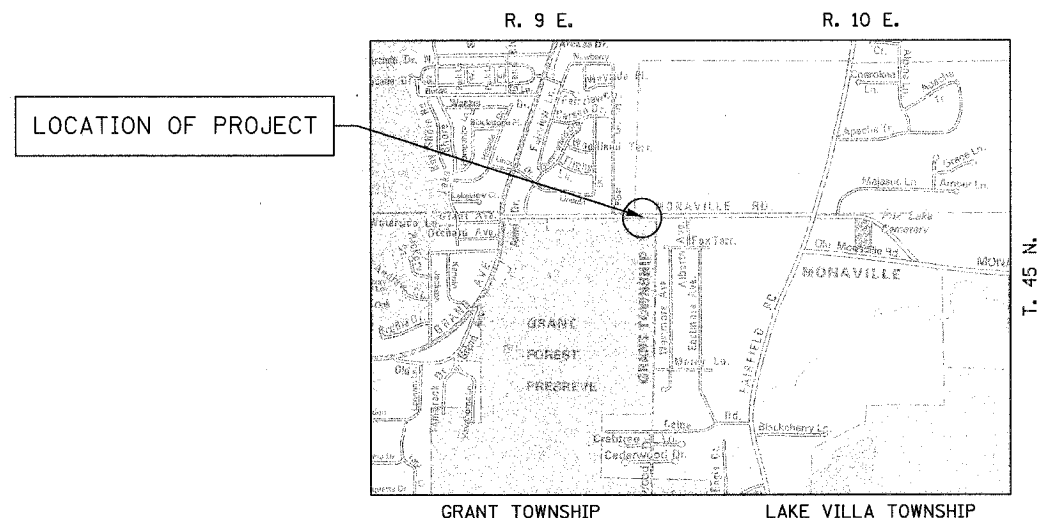
NO.	DESCRIPTION
000001-04	STANDARD SYMBOLS, ABBREVIATIONS & PATTERNS
280001-03	TEMPORARY EROSION CONTROL SYSTEMS
515001-02	NAME PLATE FOR BRIDGES
542301-01	PRECAST REINFORCED CONCRETE FLARED END SECTION
542546	FLUSH INLET BOX FOR MEDIAN
601101	CONCRETE HEADWALL FOR PIPE DRAIN
604001-02	FRAME & LIDS, TYPE 1
664001-01	CHAIN LINK FENCE
702001-06	TRAFFIC CONTROL DEVICES
720001	SIGN PANEL MOUNTING DETAILS
720006-01	SIGN PANEL ERECTION DETAILS
728001	TELESCOPING STEEL SIGN SUPPORT
780001-01	TYPICAL PAVEMENT MARKINGS



FULL SIZE PLANS HAVE BEEN PREPARED USING STANDARD ENGINEERING SCALES. REDUCED SIZED PLANS WILL NOT CONFORM TO STANDARD SCALES. IN MAKING MEASUREMENTS ON REDUCED PLANS, THE ABOVE SCALES MAY BE USED.

J.U.I.E.
JOINT UTILITY LOCATION INFORMATION FOR EXCAVATION
1-800-892-0123

CONTRACT NO. 83880



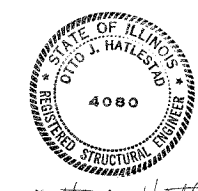
GRANT TOWNSHIP LAKE VILLA TOWNSHIP
LOCATION MAP
NOT TO SCALE

PROJECT LENGTH:
MONAVILLE ROAD - 220 FT. (0.042 MILE)
BIKE PATH - 1,295 FT. (0.245 MILE)

ADT:
MONAVILLE ROAD - 7,100 (2007)

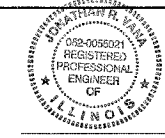
DESIGN SPEEDS:
MONAVILLE ROAD - 45 MPH POSTED SPEED = 35 MPH
BIKE PATH - 20 MPH

THE "STANDARD SPECIFICATIONS FOR ROAD AND BRIDGE CONSTRUCTION", ADOPTED JANUARY 1, 2007 BY THE ILLINOIS DEPARTMENT OF TRANSPORTATION, SHALL GOVERN THIS WORK.



REGISTERED S.E., STATE OF ILLINOIS
(COVERS SHEETS 14-21)

EXPIRES 11/30/06



REGISTERED P.E., STATE OF ILLINOIS
(NOT INCLUDING SHEETS 14-21)

PLANS PREPARED BY:

CIVILTECH
450 E. Devon Ave., Suite 300 - Itasca, Illinois 60143
Tel: 630.773.3900 - Fax: 630.773.3975
www.civiltechinc.com

PRINTED BY THE AUTHORITY OF THE STATE OF ILLINOIS

FEDERAL AID ENGINEER: ABIGAIL WILGREEN 847-705-4233 SCHAMBURG, IL
CONSULTANT ENGINEER: JONATHAN VANA, P.E. CIVILTECH ENGINEERING, INC.