

FAU ROUTE NO.	SECTION	COUNTY	TOTAL SHEETS	SHEET NO.
05-00040-00-BT	COOK	10	1	
STA. TO STA.				
FED. ROAD DIST. NO. 1	ILLINOIS	FED AID PROJECT	CMM-8003 (529)	
CONTRACT NO. 83882				

INDEX OF SHEETS

SHEET NO.	TITLE
1	COVER SHEET
2	TYPICAL SECTIONS AND LEGEND
3	SUMMARY OF QUANTITIES, GENERAL NOTES, ABBREVIATIONS, AND SCHEDULE OF MATERIALS
4-10	PAVEMENT MARKING PLANS

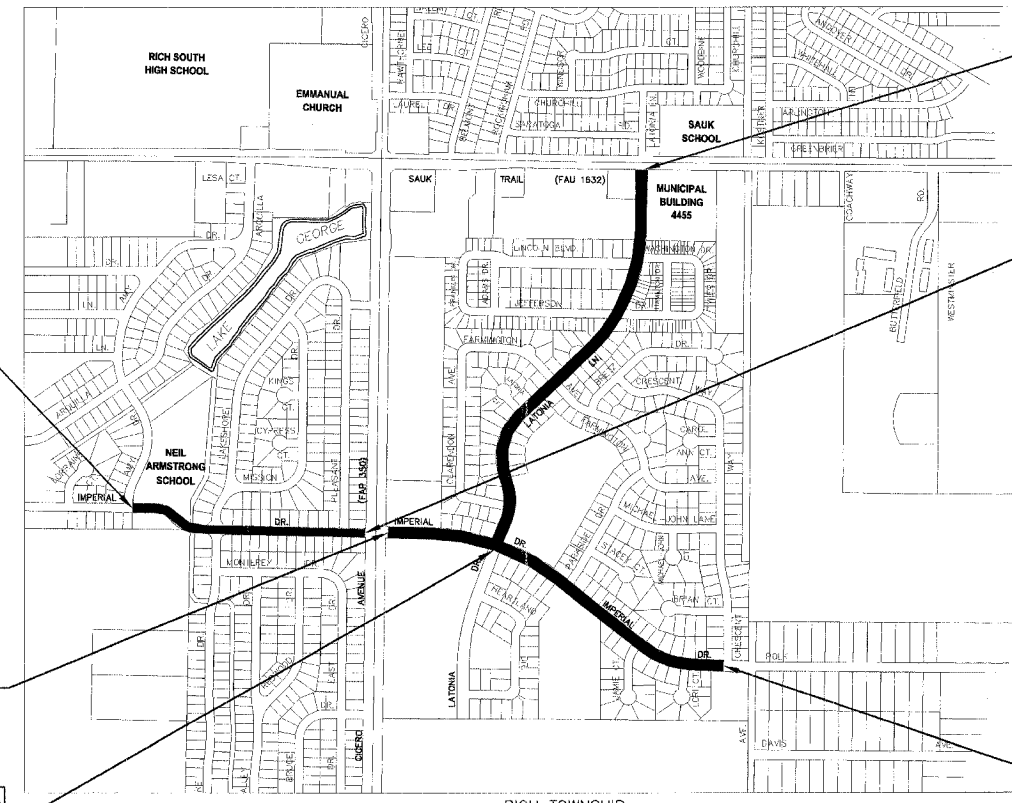
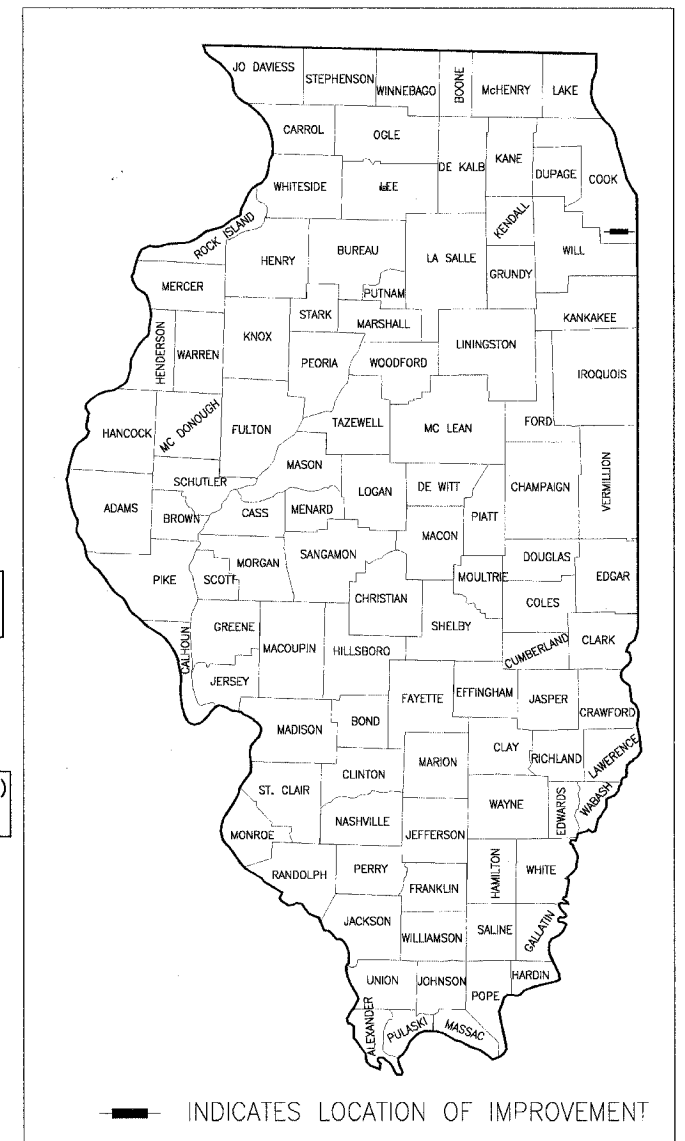
STATE OF ILLINOIS  
DEPARTMENT OF TRANSPORTATION  
DIVISION OF HIGHWAYS

**PLANS FOR PROPOSED  
LATONIA LANE AND IMPERIAL DRIVE BIKEWAY**

**LATONIA LANE - IMPERIAL DRIVE TO SAUK TRAIL (FAU 1632)  
IMPERIAL DRIVE - AMY DRIVE TO CRESCENT WAY  
SECTION NUMBER: 05-00040-00-BT  
VILLAGE OF RICHTON PARK, ILLINOIS  
COOK COUNTY**

**PAVEMENT MARKING AND SIGNAGE IMPROVEMENTS  
PROJECT NUMBER: CMM-8003(529)  
JOB NUMBER: C-91-034-06**

STANDARD NO.	HIGHWAY STANDARDS
000001-04	STANDARD SYMBOLS, ABBREVIATIONS, AND PATTERNS
701301-02	LANE CLOSURE, 2L, 2W, SHORT TIME OPERATIONS
701311-02	LANE CLOSURE 2L, 2W MOVING OPERATIONS-DAY ONLY
702001-06	TRAFFIC CONTROL DEVICES (3 SHEETS)
720006-01	SIGN PANEL ERECTION DETAILS
720011	METAL POSTS FOR SIGNS, MARKERS AND DELINEATORS
729001	APPLICATIONS OF TYPES A & B METAL POSTS (FOR SIGNS AND MARKERS)
780001-01	TYPICAL PAVEMENT MARKINGS



PROJECT NUMBER: CMM-8003(529)  
LOCATION: IMPERIAL DRIVE  
BEGIN IMPROVEMENT STA. 12+37

PROJECT NUMBER: CMM-8003(529)  
LOCATION: LATONIA LANE  
END IMPROVEMENT STA. 91+75

PROJECT NUMBER: CMM-8003(529)  
LOCATION: IMPERIAL DRIVE  
BEGIN OMISSION STA. 28+89

PROJECT NUMBER: CMM-8003(529)  
LOCATION: IMPERIAL DRIVE  
END OMISSION STA. 30+33

PROJECT NUMBER: CMM-8003(529)  
LOCATION: LATONIA LANE  
BEGIN IMPROVEMENTS STA. 62+33

PROJECT NUMBER: CMM-8003(529)  
LOCATION: IMPERIAL DRIVE  
END IMPROVEMENT STA. 56+36

RICHTON TOWNSHIP  
T35N, R13E

**LOCATION MAP**

(NOT TO SCALE)

**GROSS LENGTH OF IMPROVEMENT = 7,197 L.F. OR 1.363 MILES  
NET LENGTH OF IMPROVEMENT = 7,053 L.F. OR 1.336 MILES**

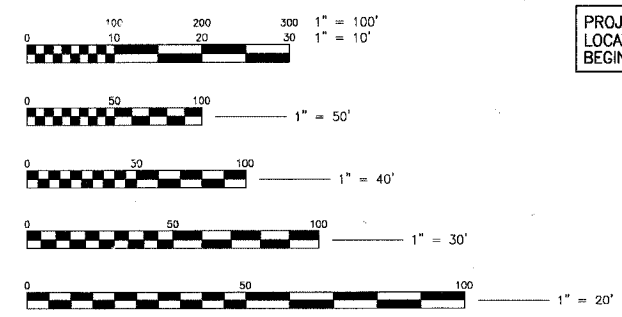


Baxter & Woodman

Crystal Lake, Illinois Burlington, Wisconsin DeKalb, Illinois Mokena, Illinois Grayslake, Illinois Rockford, Illinois Plainfield, Illinois  
815.459.1260 262.763.7834 815.787.3111 708.478.2090 847.223.5088 815.489.1551 815.609.7425

(OFFICE WHICH PREPARED PLANS)

CALL TOLL FREE 1-800-892-0123  
WITH THE FOLLOWING:  
COUNTY - COOK  
CITY-TOWNSHIP - RICHTON PARK/RICH TOWNSHIP  
SEC. & SEC. NO. - SEC. 33  
48 HOURS BEFORE YOU DIG  
EXCLUDING SAT., SUN. & HOLIDAYS



FULL SIZE PLANS HAVE BEEN PREPARED USING STANDARD ENGINEERING SCALES. REDUCED SIZED PLANS WILL NOT CONFORM TO STANDARD SCALES. IN MAKING MEASUREMENTS ON REDUCED SIZE PLANS, THE ABOVE SCALES SHALL BE USED.

CONTRACT NO. 83882



LICENSE EXPIRES 11-30-07  
Nathan J. P. K. 10-03-06  
PROJECT MANAGER

Christina A. Cole  
PROJECT ENGINEER

DATE: 10-03-06

AGENCY RESPONSIBLE FOR LETTING	
Approved	10-5, 2006 <i>[Signature]</i> Village of Richton Park, President
Passed	October 31, 2006 <i>[Signature]</i> District One Engineer of Local Roads & Streets
Releasing for Bid Based on Limited Review	November 1, 2006 <i>[Signature]</i> Deputy Director of Highways, Region One Engineer

PRINTED BY THE AUTHORITY OF THE STATE OF ILLINOIS

I:\03\PK\050454-loroni\imperialbikepat\DWG\50454-00-BT.dwg - Cover  
Created: 10/03/06 by: j35njg  
Copyright © 2006, Baxter & Woodman, Inc.  
Scale: 1/4" = 100'-0" (1/2" = 50'-0")  
License No.: 84-001121 - Expires 11-30-07

SCHAUMBURG, IL 847-705-4233  
ABIGAIL WILGREEN  
FEDERAL AID DESIGN ENGINEER