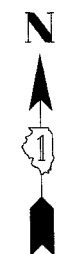
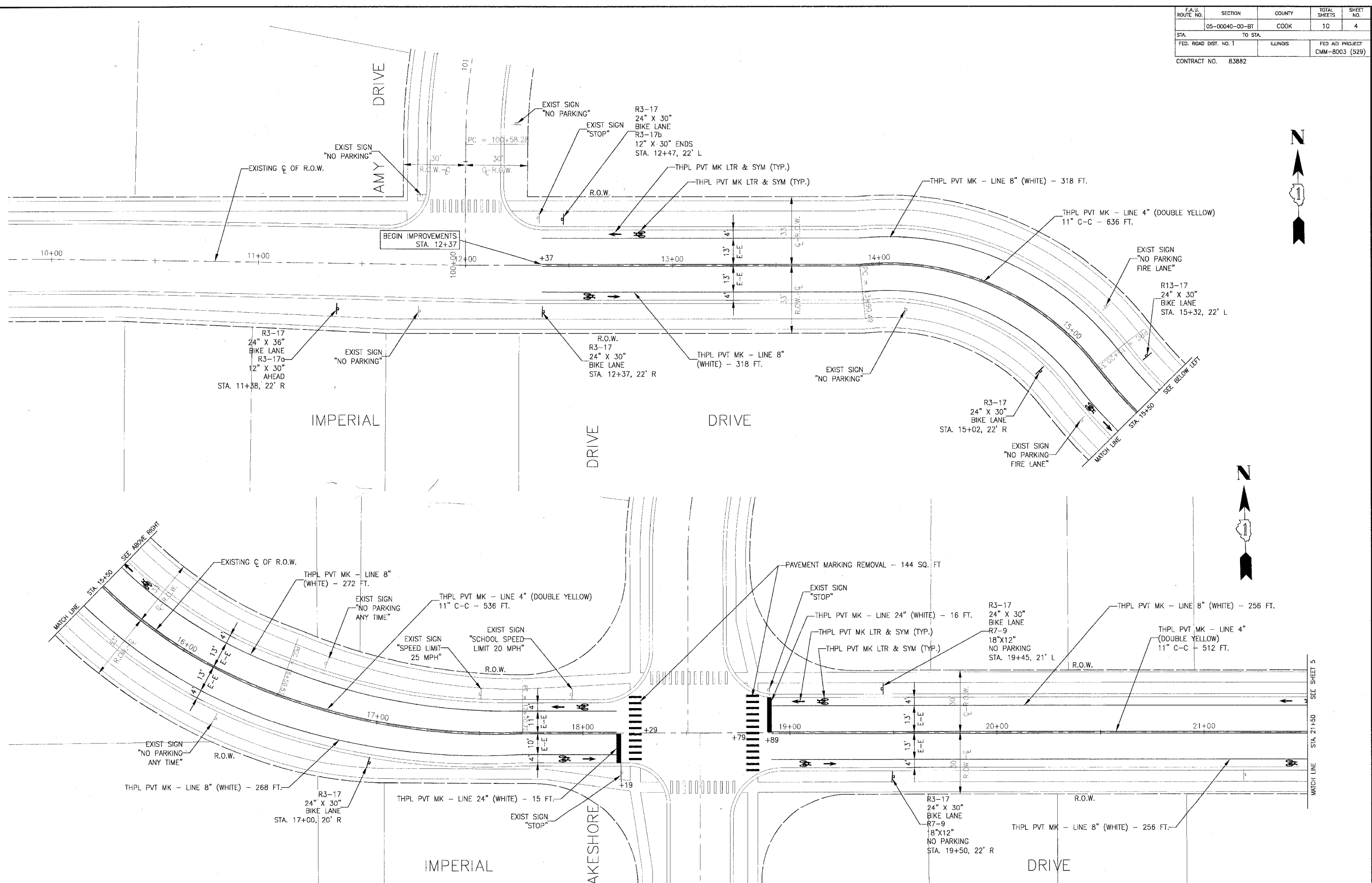



F.A.U. ROUTE NO.	SECTION	COUNTY	TOTAL SHEETS	SHEET NO.
05-00040-00-BT		COOK	10	4
STA.	TO STA.			
FED. ROAD DIST. NO. 1	ILLINOIS		FED AID PROJECT	
CONTRACT NO. 83882			CMM-8003 (529)	



I:\RCHP\050454-01\imperial\imperial\DWG\045\mapin.cwg - S174  
 Plotted: 10-03-06 @ 1:11pm by: 354rjp  
 Copyright © 2006, By Baxter & Woodman, Inc.  
 State of Illinois - Professional Design Firm  
 License No. - 184-001121 - Expires 4-30-07

CONSULTANTS	REV. NO.	DATE	DESCRIPTION
	1	9-29-06	PER IDOT COMMENTS 9-18-06
	2	10-3-06	PER IDOT COMMENTS 10-2-06

\* - REFER TO EQUIPMENT MANUFACTURER'S SHOP DRAWINGS


**Baxter & Woodman**  
 Consulting Engineers  
 Crystal Lake, Illinois 815.459.1200  
 Burlington, Wisconsin 262.763.7834  
 Mokena, Illinois 708.478.2090  
 Oakbrook, Illinois 815.787.3111  
 Graylake, Illinois 815.223.5088  
 Rockford, Illinois 815.399.1551  
 Pleasanton, Illinois 815.683.7425

**VILLAGE OF RICHTON PARK, ILLINOIS**  
**LATONIA LANE/IMPERIAL DRIVE**  
**BIKEWAY**

**IMPERIAL DRIVE**  
**STA. 10+00 TO STA. 21+50**  
**PAVEMENT MARKING PLAN**

DESIGNED BY	SCALE
CAC	HORIZ. 1" = 20'
DRAWN BY	PROJECT NO.
SMS	050454
CHECKED BY	SHEET NO.
NJP	4 OF 10
DATE	
7-28-06	