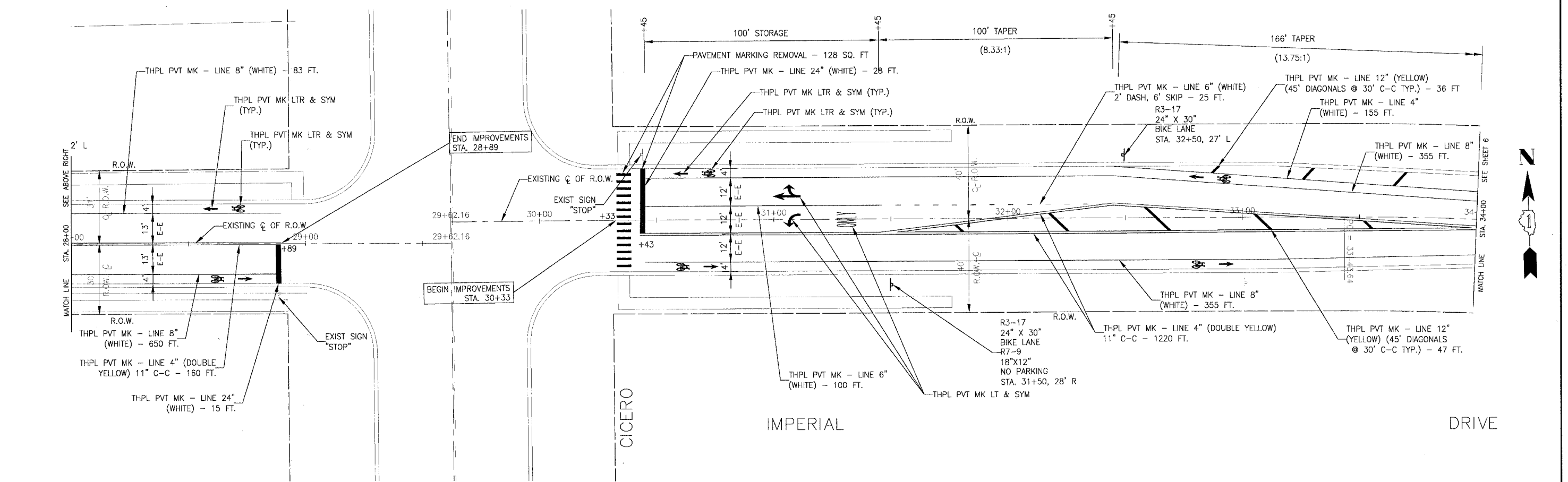
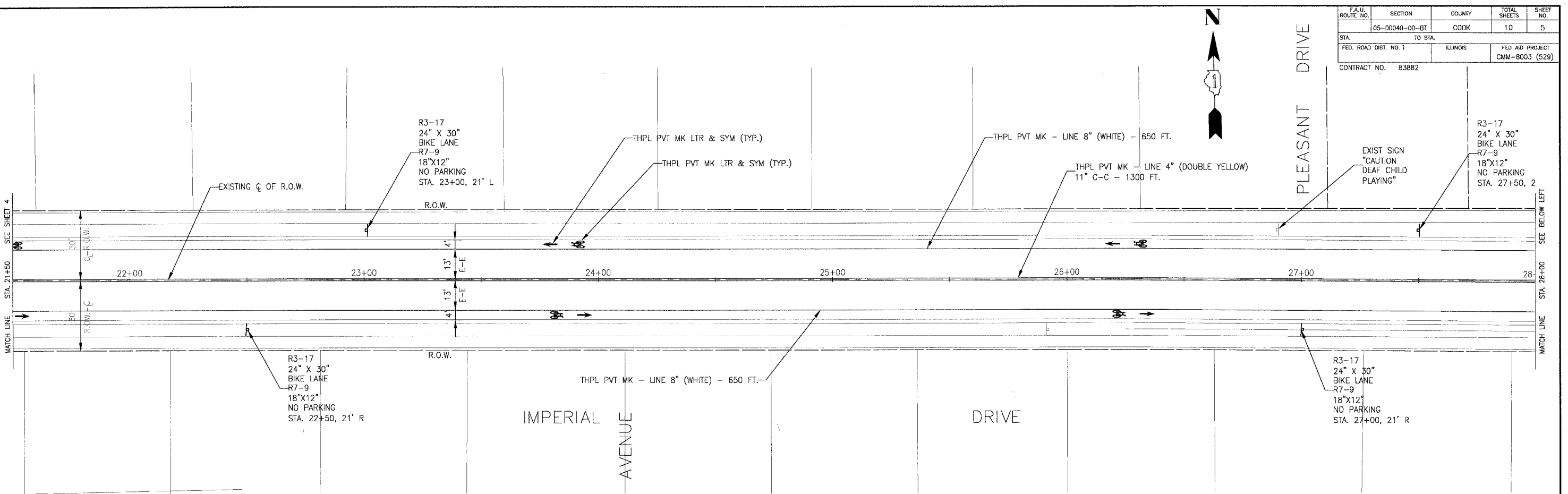


| | | | | |
|-----------------------|----------|--------|--------------------------------|-----------|
| F.A.U. ROUTE NO. | SECTION | COUNTY | TOTAL SHEETS | SHEET NO. |
| 05-00040-00-BT | COOK | 10 | 5 | |
| STA. | TO STA. | | | |
| FED. ROAD DIST. NO. 1 | ILLINOIS | | FED AID PROJECT CMM-8003 (529) | |
| CONTRACT NO. 83882 | | | | |



| CONSULTANTS | REV. NO. | DATE | DESCRIPTION |
|-------------|----------|---------|---------------------------|
| | 1 | 9-29-06 | PER IDOT COMMENTS 9-18-06 |
| | 2 | 10-3-06 | PER IDOT COMMENTS 10-2-06 |

* - REFER TO EQUIPMENT MANUFACTURER'S SHOP DRAWINGS

BAXTER & WOODMAN
Consulting Engineers

Baxter & Woodman
Crystal Lake, Illinois 815-459-1500
Burlington, Wisconsin 262-783-7834
Mokena, Illinois 708-478-2090
DeKalb, Illinois 815-787-8111
Orangefield, Illinois 847-223-5088
Rockford, Illinois 815-489-1531
Plainfield, Illinois 815-628-7425

VILLAGE OF RICHTON PARK, ILLINOIS
LATONIA LANE/IMPERIAL DRIVE
BIKEWAY

| | | | |
|---------------------------------|--|-------------|-----------------|
| IMPERIAL DRIVE | | DESIGNED BY | SCALE |
| STA. 21+50 TO STA. 34+00 | | CAC | HORIZ. 1" = 20' |
| PAVEMENT MARKING PLAN | | DRAWN BY | PROJECT NO. |
| | | SMS | 050454 |
| | | CHECKED BY | SHEET NO. |
| | | NJP | |
| | | DATE | |
| | | 7-28-06 | 5 OF 10 |

I:\Projects\050454-1\Imperial\Imperial\DWG\050454\p1h.dwg - SHT5
 Plotted: 10-03-06 @ 1:1pm By: 354-jip
 Copyright © 2006, By Baxter & Woodman, Inc.
 State of Illinois - Professional Design Firm
 License No. - 184-001121 - Expires 4-30-07