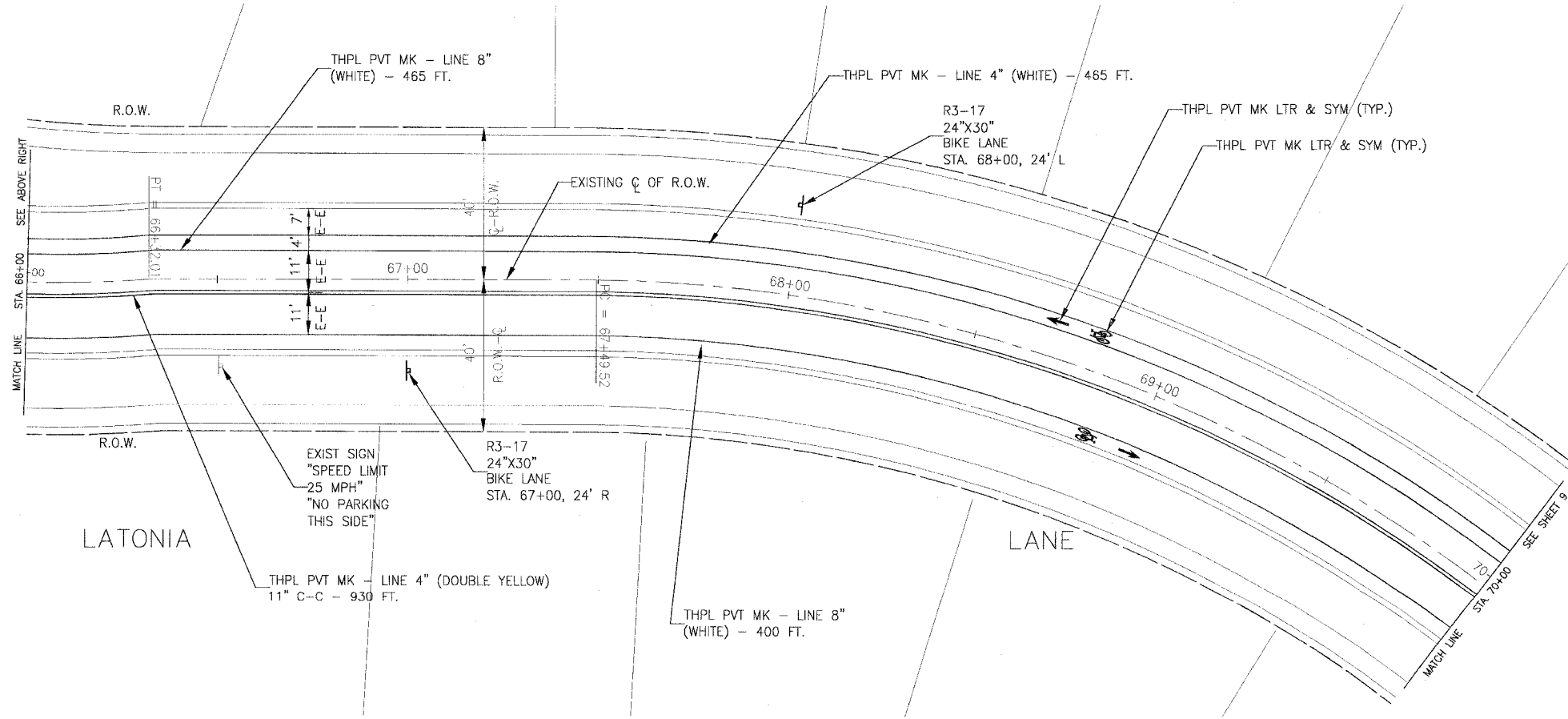
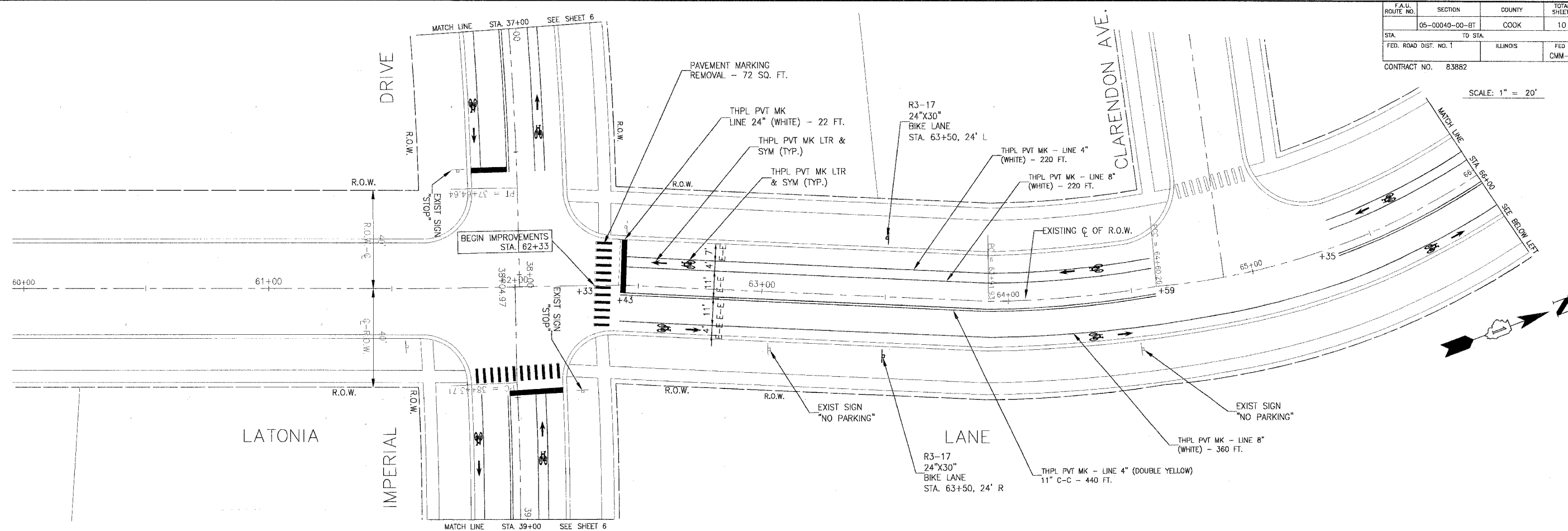


F.A.U. ROUTE NO.	SECTION	COUNTY	TOTAL SHEETS	SHEET NO.
05-00040-00-BT		COOK	10	8
STA.	TO STA.	ILLINOIS	FED AID PROJECT	
FED. ROAD DIST. NO. 1			CMM-8003 (529)	
CONTRACT NO. 83882				

SCALE: 1" = 20'



I:\RCHPK\050454-100\imperialbikepat\DWG\50454ppm.dwg - SH18
 Plotted: 10-03-06 @ 1:12pm By: 354jpp
 Copyright © 2006, By Baxter & Woodman, Inc.
 State of Illinois - Professional Design Firm
 License No. - 184-001121 - Expires 4-30-07

CONSULTANTS	REV. NO.	DATE	DESCRIPTION
BAXTER & WOODMAN Consulting Engineers	1	9-29-06	PER IDOT COMMENTS 9-18-06
	2	10-3-06	PER IDOT COMMENTS 10-2-06

* - REFER TO EQUIPMENT MANUFACTURER'S SHOP DRAWINGS

BAXTER & WOODMAN
Consulting Engineers

Baxter & Woodman
Crystal Lake, Illinois 815.459.1280
Burlington, Wisconsin 262.263.7894
Mokena, Illinois 708.478.2690
DeKalb, Illinois 815.787.3111
Orland Park, Illinois 815.223.5098
Rockford, Illinois 815.495.1551
Plainfield, Illinois 815.609.7425

VILLAGE OF RICHTON PARK, ILLINOIS
LATONIA LANE/IMPERIAL DRIVE
BIKEWAY

LATONIA LANE
STA. 60+00 TO STA. 70+00
PAVEMENT MARKING PLAN

DESIGNED BY CAC	SCALE HORIZ. 1" = 20'
DRAWN BY SMS	PROJECT NO. 050454
CHECKED BY NJP	SHEET NO. 8 OF 10
DATE 7-28-06	