

FAU ROUTE NO.	SECTION	COUNTY	TOTAL SHEETS	SHEET NO.
05-00040-00-BT	COOK	10	1	
STA. TO STA.				
FED. ROAD DIST. NO. 1	ILLINOIS	FED AID PROJECT CMM-8003 (529)		
CONTRACT NO. 83882				

INDEX OF SHEETS

SHEET NO.	TITLE
1	COVER SHEET
2	TYPICAL SECTIONS AND LEGEND
3	SUMMARY OF QUANTITIES, GENERAL NOTES, ABBREVIATIONS, AND SCHEDULE OF MATERIALS
4-10	PAVEMENT MARKING PLANS

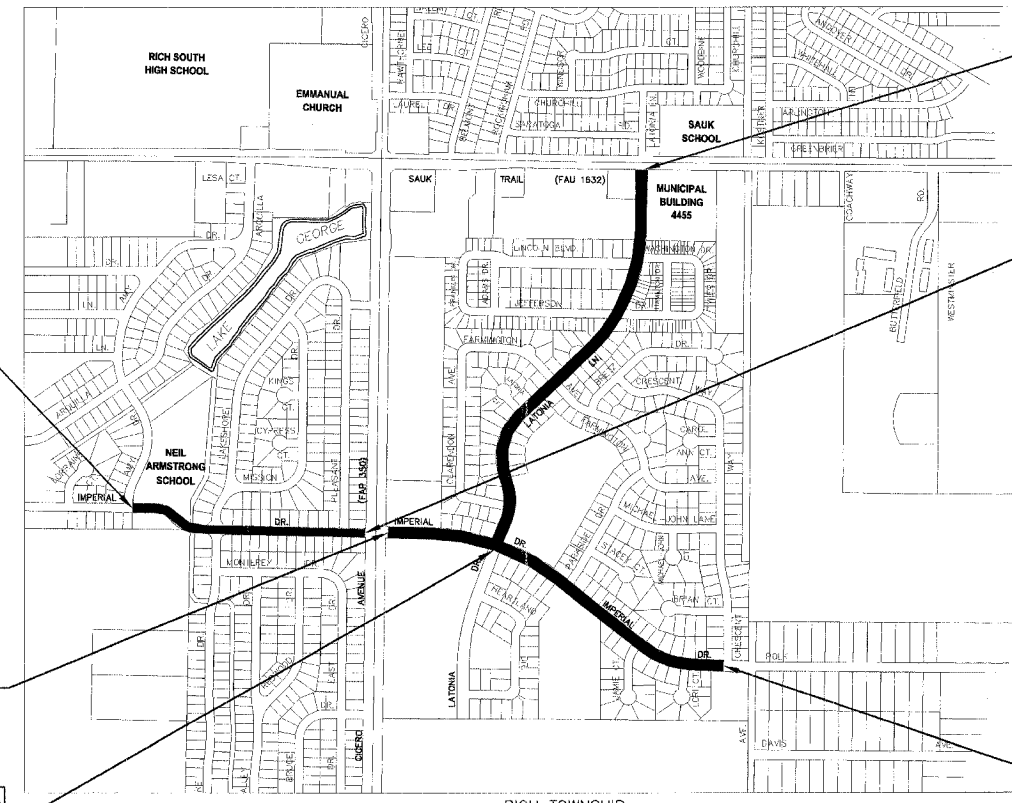
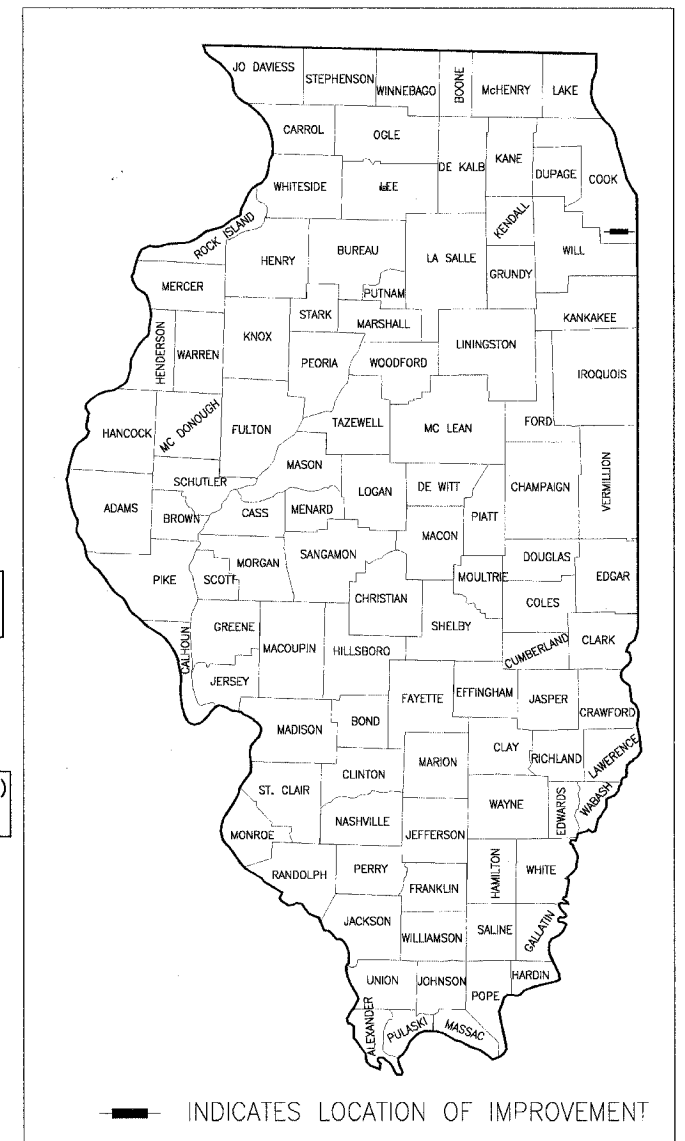
STATE OF ILLINOIS  
DEPARTMENT OF TRANSPORTATION  
DIVISION OF HIGHWAYS

**PLANS FOR PROPOSED  
LATONIA LANE AND IMPERIAL DRIVE BIKEWAY**

**LATONIA LANE - IMPERIAL DRIVE TO SAUK TRAIL (FAU 1632)  
IMPERIAL DRIVE - AMY DRIVE TO CRESCENT WAY  
SECTION NUMBER: 05-00040-00-BT  
VILLAGE OF RICHTON PARK, ILLINOIS  
COOK COUNTY**

**PAVEMENT MARKING AND SIGNAGE IMPROVEMENTS  
PROJECT NUMBER: CMM-8003(529)  
JOB NUMBER: C-91-034-06**

STANDARD NO.	HIGHWAY STANDARDS
000001-04	STANDARD SYMBOLS, ABBREVIATIONS, AND PATTERNS
701301-02	LANE CLOSURE, 2L, 2W, SHORT TIME OPERATIONS
701311-02	LANE CLOSURE 2L, 2W MOVING OPERATIONS-DAY ONLY
702001-06	TRAFFIC CONTROL DEVICES (3 SHEETS)
720006-01	SIGN PANEL ERECTION DETAILS
720011	METAL POSTS FOR SIGNS, MARKERS AND DELINEATORS
729001	APPLICATIONS OF TYPES A & B METAL POSTS (FOR SIGNS AND MARKERS)
780001-01	TYPICAL PAVEMENT MARKINGS



PROJECT NUMBER: CMM-8003(529)  
LOCATION: LATONIA LANE  
END IMPROVEMENT STA. 91+75

PROJECT NUMBER: CMM-8003(529)  
LOCATION: IMPERIAL DRIVE  
BEGIN OMISSION STA. 28+89

PROJECT NUMBER: CMM-8003(529)  
LOCATION: IMPERIAL DRIVE  
BEGIN IMPROVEMENT STA. 12+37

PROJECT NUMBER: CMM-8003(529)  
LOCATION: IMPERIAL DRIVE  
END OMISSION STA. 30+33

PROJECT NUMBER: CMM-8003(529)  
LOCATION: LATONIA LANE  
BEGIN IMPROVEMENTS STA. 62+33

PROJECT NUMBER: CMM-8003(529)  
LOCATION: IMPERIAL DRIVE  
END IMPROVEMENT STA. 56+36

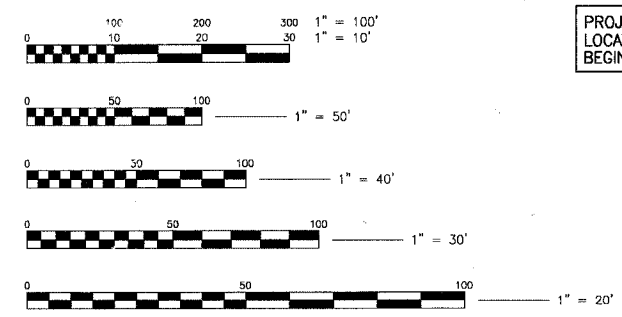


*Nathan J. Palk*  
11-30-07  
PROJECT MANAGER

*Christa A. Cole*  
PROJECT ENGINEER

DATE: 10-03-06

CALL TOLL FREE 1-800-892-0123  
WITH THE FOLLOWING:  
COUNTY = COOK  
CITY/TOWNSHIP = RICHTON PARK/RICH TOWNSHIP  
SEC. & 30C. NO. = SEC. 33  
48 HOURS BEFORE YOU DIG  
EXCLUDING SAT., SUN. & HOLIDAYS



FULL SIZE PLANS HAVE BEEN PREPARED USING STANDARD ENGINEERING SCALES. REDUCED SIZED PLANS WILL NOT CONFORM TO STANDARD SCALES. IN MAKING MEASUREMENTS ON REDUCED SIZE PLANS, THE ABOVE SCALES SHALL BE USED.

RICHTON TOWNSHIP  
T35N, R13E  
**LOCATION MAP**  
(NOT TO SCALE)

**GROSS LENGTH OF IMPROVEMENT = 7,197 L.F. OR 1.363 MILES  
NET LENGTH OF IMPROVEMENT = 7,053 L.F. OR 1.336 MILES**



Baxter & Woodman

Crystal Lake, Illinois Burlington, Wisconsin DeKalb, Illinois Mokena, Illinois Grayslake, Illinois Rockford, Illinois Plainfield, Illinois  
815.459.1260 262.763.7834 815.787.3111 708.478.2090 847.223.5088 815.489.1551 815.609.7425

AGENCY RESPONSIBLE FOR LETTING	
Approved	10-5, 2006 <i>[Signature]</i> Village of Richton Park, President
Passed	October 31, 2006 <i>[Signature]</i> District One Engineer of Local Roads & Streets
Releasing for Bid Based on Limited Review	November 1, 2006 <i>[Signature]</i> Deputy Director of Highways, Region One Engineer

PRINTED BY THE AUTHORITY OF  
THE STATE OF ILLINOIS

CONTRACT NO. 83882

I:\03\PR\050454-loroni\imperialbikepat\DWG\545454-CIR.dwg - Cover  
Created: 10/03/06 by: JTB  
Copyright © 2006, Baxter & Woodman, Inc.  
Scale: 1/4" = 100'-0" License No. 84-001121 - Expires 11-30-07

SCHAUMBURG, IL 847-705-4233  
ABIGAIL WILGREEN I.D.O.T. FEDERAL AID DESIGN ENGINEER



F.A.U. ROUTE NO.	SECTION	COUNTY	TOTAL SHEETS	SHEET NO.
05-00040-00-BT		COOK	10	3
STA. TO STA.				
FED. ROAD DIST. NO. 1		ILLINOIS	FED AID PROJECT CMM-8003 (529)	
CONTRACT NO. 83882				

### SUMMARY OF QUANTITIES

CODE NO.	DESCRIPTION	UNIT	TOTAL QUANTITY	ROADWAY SFY-10
67100100	MOBLIZATION	LSUM	1	1
72000100	SIGN PANEL, TYPE 1	SQ FT	263	263
72900200	METAL POST - TYPE B	FOOT	634	634
78000100	THERMOPLASTIC PAVEMENT MARKING - LETTERS AND SYMBOLS	SQ FT	1,687	1,687
78000200	THERMOPLASTIC PAVEMENT MARKING - LINE 4"	FOOT	17,123	17,123
78000400	THERMOPLASTIC PAVEMENT MARKING - LINE 6"	FOOT	372	372
78000500	THERMOPLASTIC PAVEMENT MARKING - LINE 8"	FOOT	13,349	13,349
78000600	THERMOPLASTIC PAVEMENT MARKING - LINE 12"	FOOT	469	469
78000850	THERMOPLASTIC PAVEMENT MARKING - LINE 24"	FOOT	188	188
78300100	PAVEMENT MARKING REMOVAL	SQ FT	508	508

\* DENOTES SPECIALTY ITEM

### SCHEDULE OF PAVEMENT MARKING QUANTITIES

	UNIT	TOTAL QUANTITY	LATONIA LANE	IMPERIAL DRIVE
THERMOPLASTIC PAVEMENT MARKING - LETTERS AND SYMBOLS	SQ FT	1,687	712	975
THERMOPLASTIC PAVEMENT MARKING - LINE 4"	FOOT	17,123	6,545	10,578
THERMOPLASTIC PAVEMENT MARKING - LINE 6"	FOOT	372	0	372
THERMOPLASTIC PAVEMENT MARKING - LINE 8"	FOOT	13,349	5,182	8,167
THERMOPLASTIC PAVEMENT MARKING - LINE 12"	FOOT	469	74	395
THERMOPLASTIC PAVEMENT MARKING - LINE 24"	FOOT	188	77	111
PAVEMENT MARKING REMOVAL	SQ FT	508	124	384

### GENERAL NOTES

- THE CONTRACTOR SHALL PROVIDE AND INSTALL TWO (2) WEIGHTED SANDBAGS ON EACH TYPE I OR TYPE II BARRICADE USED. ONE (1) WEIGHTED SANDBAG SHALL BE PLACED ACROSS EACH BOTTOM RAIL.

### ABBREVIATIONS

CL	CENTERLINE	R	STRUCTURE TO BE RECONSTRUCTED
CONC	PORTLAND CEMENT CONCRETE	A	STRUCTURE TO BE ADJUSTED
BIT	BITUMINOUS PAVEMENT	▲	CENTRAL ANGLE
GR	GRAVEL	D=	DEGREE OF CURVE
CMP	CORRUGATED METAL PIPE	T=	TANGENT LENGTH
FH	FIRE HYDRANT	L=	CURVE LENGTH
CI	CAST IRON	R=	RADIUS OF CURVE
DI	DUCTILE IRON	E=	EXTERNAL DISTANCE
F-F	FACE-TO-FACE	SE=	SUPERELEVATION (FT. PER FT. OF WIDTH)
E-E	EDGE-TO-EDGE	X=	EXTERNAL DISTANCE OF VERTICAL CURVE
B-B	BACK-TO-BACK	PC	POINT OF CURVATURE
BM	BENCH MARK	PI	POINT OF INTERSECTION
INV EL	INVERT ELEVATION	PT	POINT OF TANGENCY
CL EL	CENTERLINE ELEVATION	POT	POINT ON TANGENCY
P	POINT	PCC	POINT OF COMPOUND CURVATURE
G	GUTTER	PRC	POINT OF REVERSE CURVATURE
C	CURB	VC	VERTICAL CURVE
BC	BACK OF CURB	N&W	NAIL AND WASHER
EOP	EDGE OF PAVEMENT	TCE	TEMPORARY CONSTRUCTION EASEMENT
PL	PROPERTY LINE		
ROW	RIGHT OF WAY		
FL	FLOW LINE		
TF	TOP OF FRAME		
TC	TOP OF CURB OR CONCRETE		

I:\CHP\050454-1\encl\imperial\epa\DWG\050454-SHT3.dwg - sht3  
 Plotted: 10-03-06 @ 1:09pm By: 254njp  
 Copyright © 2006, by Baxter & Woodman, Inc.  
 State of Illinois - Professional Design Firm  
 License No. - 184-001121 - Expires 4-30-07

CONSULTANTS	REV. NO.	DATE	DESCRIPTION
	1	9-29-06	PER IDOT COMMENTS 9-18-06
	2	10-3-06	PER IDOT COMMENTS 10-2-06
* - REFER TO EQUIPMENT MANUFACTURER'S SHOP DRAWINGS			

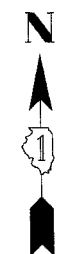
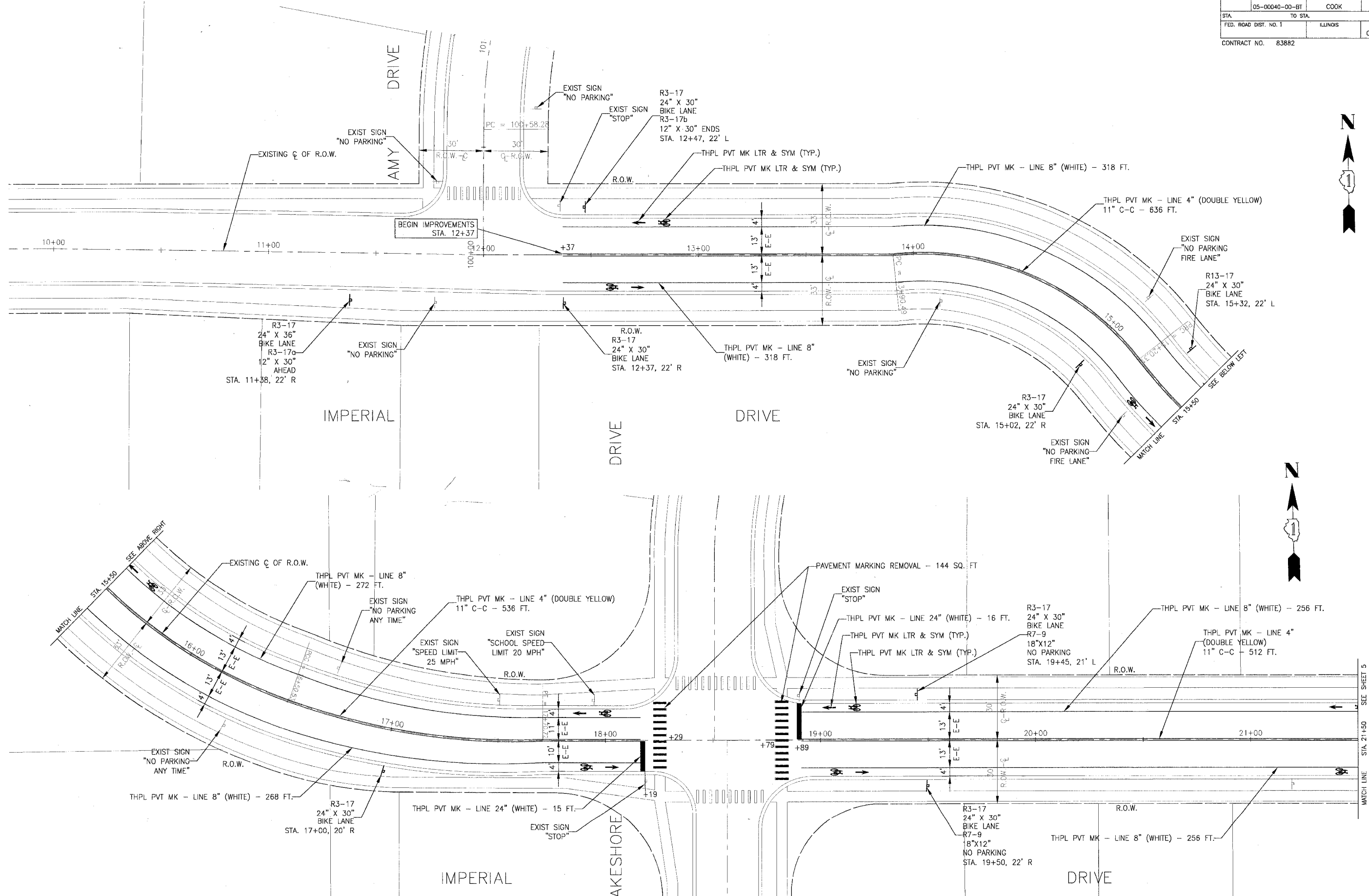


**Baxter & Woodman**  
 Crystal Lake, Illinois 815-459-1260  
 Burlington, Wisconsin 762-763-7834  
 Moline, Illinois 308-478-2090  
 DeKalb, Illinois 815-787-3111  
 Graylake, Illinois 847-223-5088  
 Rockford, Illinois 815-489-1551  
 Plainfield, Illinois 815-609-7125

**VILLAGE OF RICHTON PARK, ILLINOIS**  
**LATONIA LANE/IMPERIAL DRIVE**  
**BIKEWAY**

**SUMMARY OF QUANTITIES,**  
**GENERAL NOTES, ABBREVIATIONS,**  
**AND SCHEDULE OF MATERIALS**

DESIGNED BY	SCALE
CAC	NONE
DRAWN BY	PROJECT NO.
SMS	050454
CHECKED BY	SHEET NO.
NJP	3 OF 10
DATE	
7-28-06	



I:\RCHPK\050454-01\imperialbikebicy\DWG\045-impin.cwg - S174  
 Plotted: 10-03-06 @ 1:11pm by: 354-rjp  
 Copyright © 2006, By Baxter & Woodman, Inc.  
 State of Illinois - Professional Design Firm  
 License No. - 184-001121 - Expires 4-30-07

CONSULTANTS	REV. NO.	DATE	DESCRIPTION
	1	9-29-06	PER IDOT COMMENTS 9-18-06
	2	10-3-06	PER IDOT COMMENTS 10-2-06

\* - REFER TO EQUIPMENT MANUFACTURER'S SHOP DRAWINGS

**BAXTER & WOODMAN**  
 Consulting Engineers

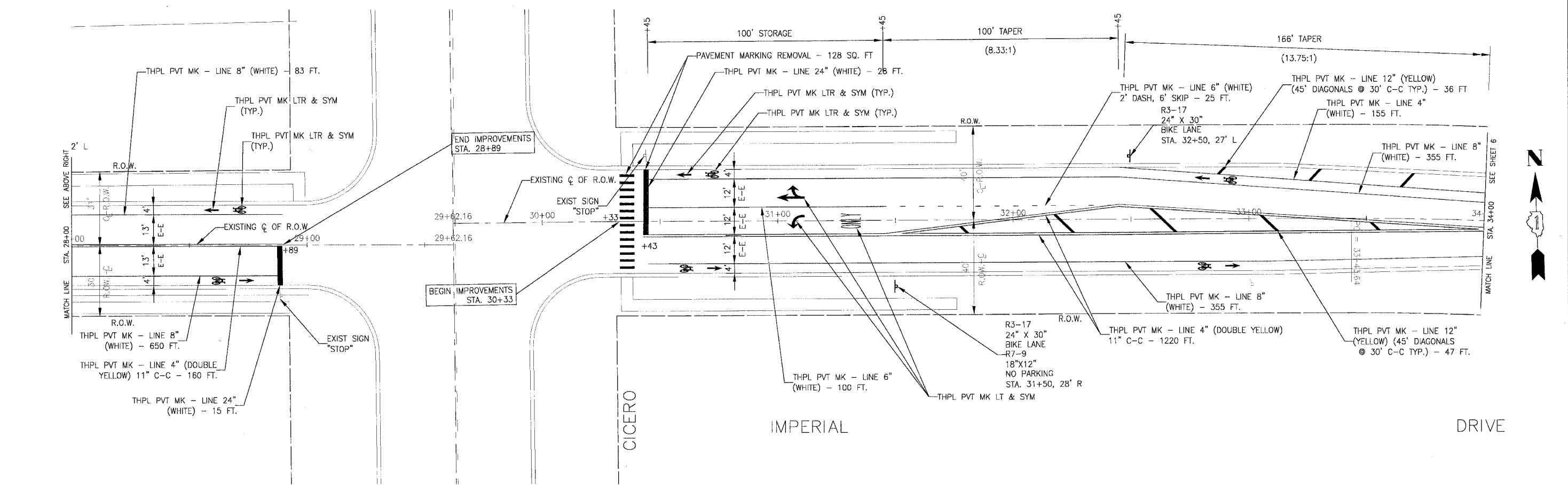
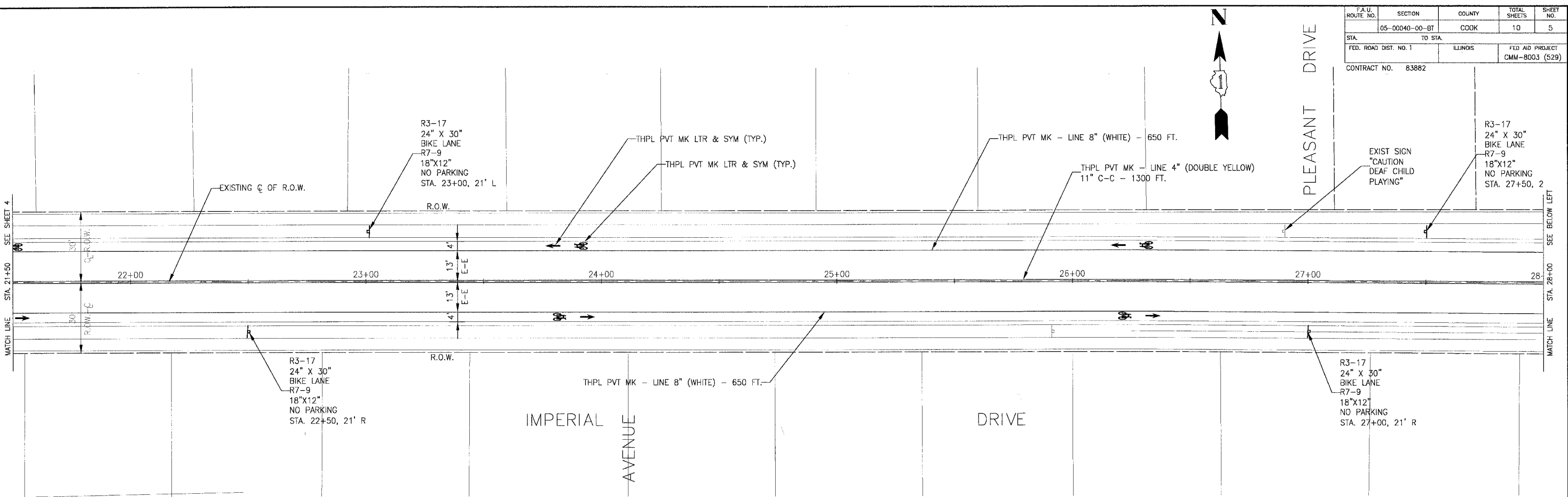
*Baxter & Woodman*  
 Crystal Lake, Illinois 815.459.1200  
 Burlington, Wisconsin 262.763.7834  
 Mokena, Illinois 708.478.2090  
 Oakbrook, Illinois 815.787.3111  
 Grayslake, Illinois 847.323.5088  
 Rockford, Illinois 815.499.1551  
 Plainfield, Illinois 815.683.7425

**VILLAGE OF RICHTON PARK, ILLINOIS**  
**LATONIA LANE/IMPERIAL DRIVE**  
**BIKEWAY**

**IMPERIAL DRIVE**  
**STA. 10+00 TO STA. 21+50**  
**PAVEMENT MARKING PLAN**

DESIGNED BY CAC	SCALE HORIZ. 1" = 20'
DRAWN BY SMS	PROJECT NO. 050454
CHECKED BY NJP	SHEET NO. 4 OF 10
DATE 7-28-06	

F.A.U. ROUTE NO.	SECTION	COUNTY	TOTAL SHEETS	SHEET NO.
05-0040-00-BT	COOK	10	5	
STA.	TO STA.			
FED. ROAD DIST. NO. 1	ILLINOIS		FED AID PROJECT CMM-8003 (529)	
CONTRACT NO. 83882				



CONSULTANTS	REV. NO.	DATE	DESCRIPTION
	1	9-29-06	PER IDOT COMMENTS 9-18-06
	2	10-3-06	PER IDOT COMMENTS 10-2-06

\* - REFER TO EQUIPMENT MANUFACTURER'S SHOP DRAWINGS

**BAXTER & WOODMAN**  
Consulting Engineers

*Baxter & Woodman*  
Crystal Lake, Illinois 815-459-1500  
Burlington, Wisconsin 262-783-7834  
Mokena, Illinois 708-478-2090  
DeKalb, Illinois 815-787-8111  
Orangefield, Illinois 847-223-5088  
Rockford, Illinois 815-489-1531  
Plainfield, Illinois 815-628-7425

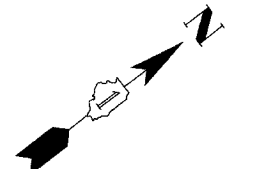
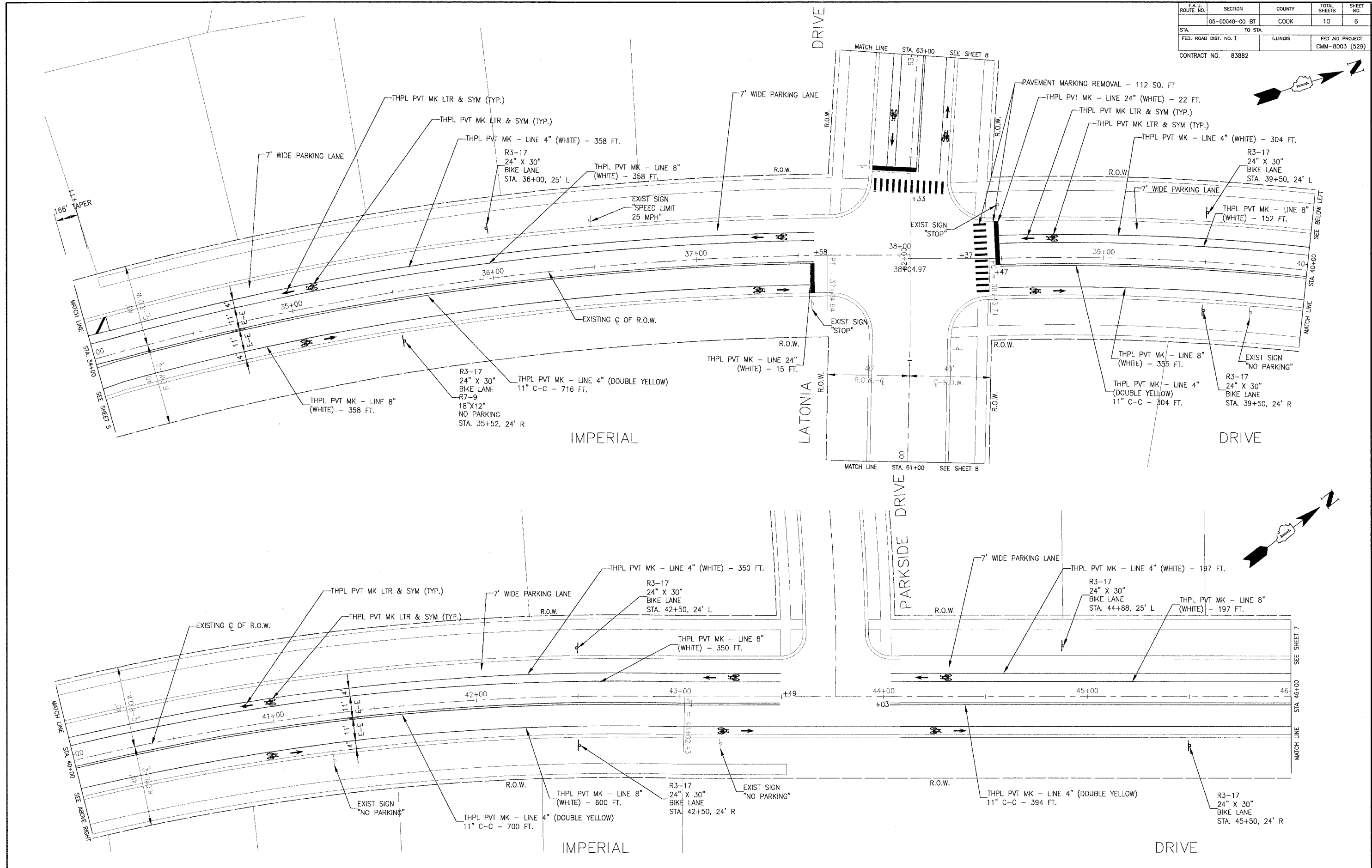
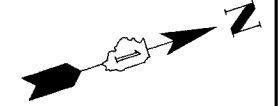
**VILLAGE OF RICHTON PARK, ILLINOIS**  
**LATONIA LANE/IMPERIAL DRIVE**  
**BIKEWAY**

**IMPERIAL DRIVE**  
**STA. 21+50 TO STA. 34+00**  
**PAVEMENT MARKING PLAN**

DESIGNED BY CAC	SCALE HORIZ. 1" = 20'
DRAWN BY SMS	PROJECT NO. 050454
CHECKED BY NJP	SHEET NO.
DATE 7-28-06	<b>5 OF 10</b>

I:\R:\Richton Park\Imperial\DWG\050454\p1h.dwg - SHT5  
 Plotted: 10-03-06 @ 1:1pm By: 354-jip  
 Copyright © 2006, By Baxter & Woodman, Inc.  
 State of Illinois - Professional Design Firm  
 License No. - 184-001121 - Expires 4-30-07

F.A.U. ROUTE NO.	SECTION	COUNTY	TOTAL SHEETS	SHEET NO.
05-00040-00-BT		COOK	10	6
STA.	TO STA.	ILLINOIS	FED AID PROJECT	
FED. ROAD DIST. NO. 1			CMM-8003 (529)	
CONTRACT NO. 83882				



I:\RCHPK\050454-01\imperial\krepota\DWG\50454\mapin.dwg - 5HT6  
 Plotted: 10-03-06 @ 1:11pm By: 354fnp  
 Copyright © 2006, By Baxter & Woodman, Inc.  
 State of Illinois - Professional Design Firm  
 License No. - 184-001121 - Expires 4-30-07

CONSULTANTS	REV. NO.	DATE	DESCRIPTION
	1	9-29-06	PER IDOT COMMENTS 9-18-06
	2	10-3-06	PER IDOT COMMENTS 10-2-06

\* - REFER TO EQUIPMENT MANUFACTURER'S SHOP DRAWINGS

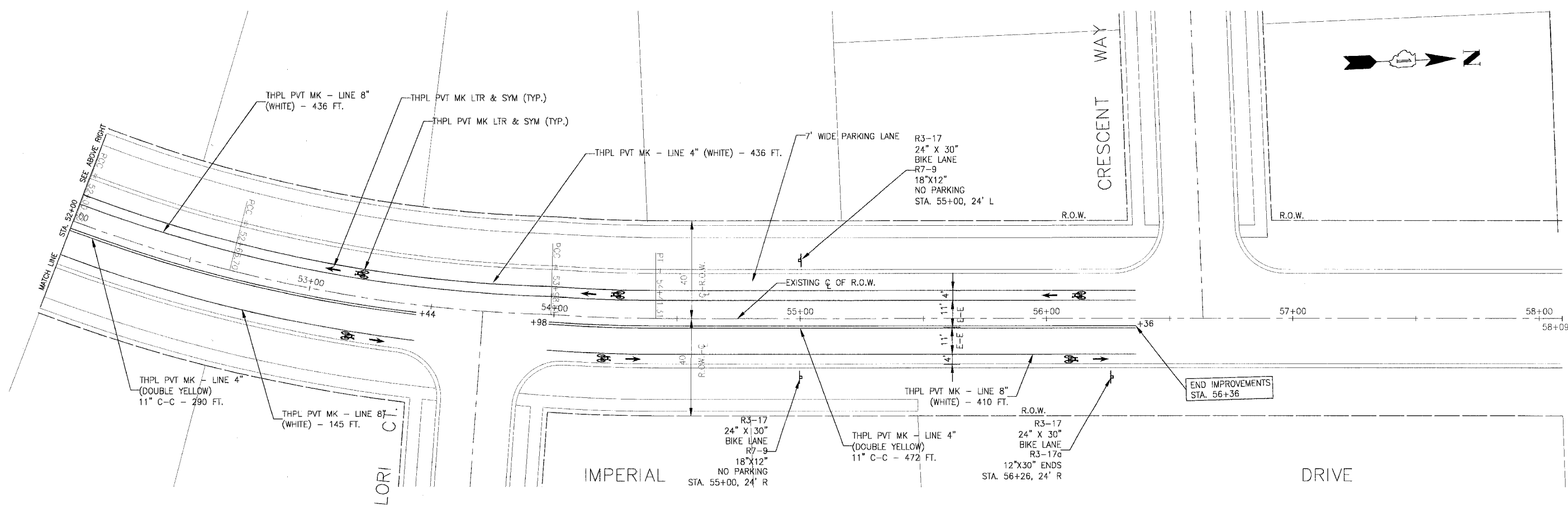
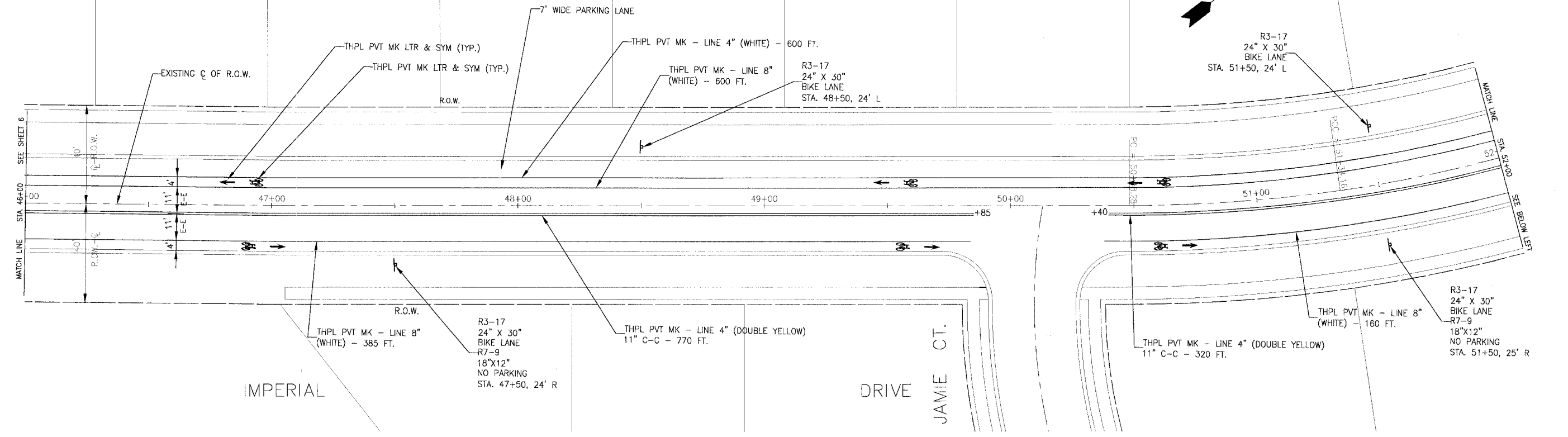
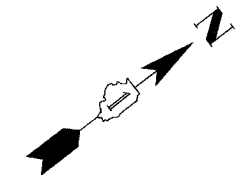
**Baxter & Woodman**  
 Crystal Lake, Illinois 815.453.1800  
 Burlington, Wisconsin 262.763.7504  
 Mokena, Illinois 708.478.2090  
 DeKalb, Illinois 815.787.3111  
 Graylake, Illinois 847.233.5088  
 Rockford, Illinois 815.483.1351  
 Plainfield, Illinois 815.603.7425

**VILLAGE OF RICHTON PARK, ILLINOIS**  
**LATONIA LANE/IMPERIAL DRIVE**  
**BIKEWAY**

**IMPERIAL DRIVE**  
**STA. 34+00 TO STA. 46+00**  
**PAVEMENT MARKING PLAN**

DESIGNED BY CAC	SCALE HORIZ. 1" = 20'
DRAWN BY SMS	PROJECT NO. 050454
CHECKED BY NJP	SHEET NO. <b>6 OF 10</b>
DATE 7-28-06	

F.A.U. ROUTE NO.	SECTION	COUNTY	TOTAL SHEETS	SHEET NO.
05-0040-00-BT		COOK	10	7
STA. TO STA.	ILLINOIS		FED AID PROJECT	
FED. ROAD DIST. NO. 1			CMM-8003 (529)	
CONTRACT NO. 83882				



I:\RCHP\050454-1\imperial\imperial.dwg 5/04/2006 11:20am By: 354njp  
 Plotted: 10-03-06 @ 1:12pm By: 354njp  
 Copyright © 2006, By Baxter & Woodman, Inc.  
 State of Illinois - Professional Design Firm  
 License No. 184-001121 Expires 4-30-07

CONSULTANTS	REV. NO.	DATE	DESCRIPTION
	1	9-29-06	PER IDOT COMMENTS 9-18-06
	2	10-3-06	PER IDOT COMMENTS 10-2-06

\* - REFER TO EQUIPMENT MANUFACTURER'S SHOP DRAWINGS



**Baxter & Woodman**  
 Crystal Lake, Illinois 815.433.1200  
 Burlington, Wisconsin 262.763.7834  
 Mchenno, Illinois 208.478.2090  
 DeKalb, Illinois 815.787.3111  
 Grayslake, Illinois 847.223.5088  
 Huntley, Illinois 815.481.1551  
 Plainfield, Illinois 815.603.7425

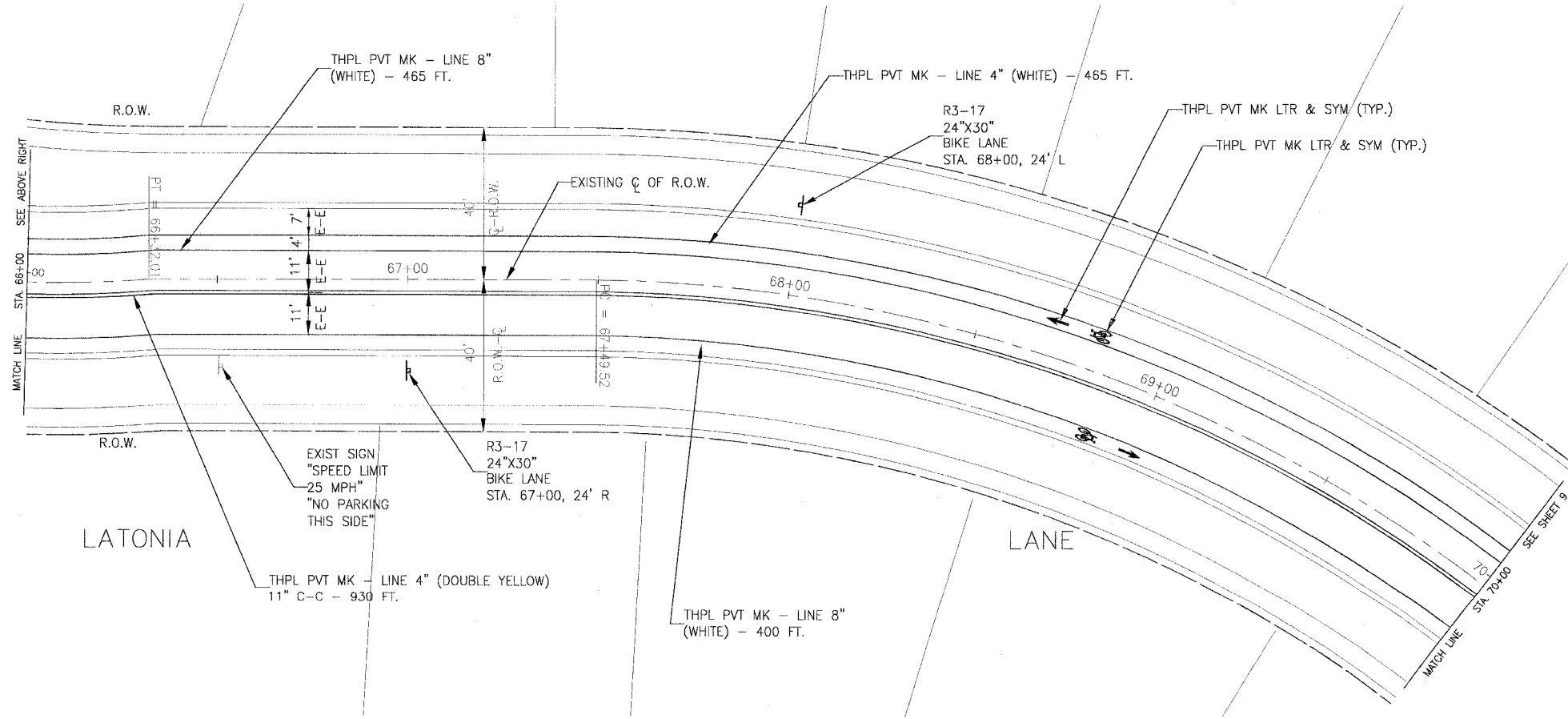
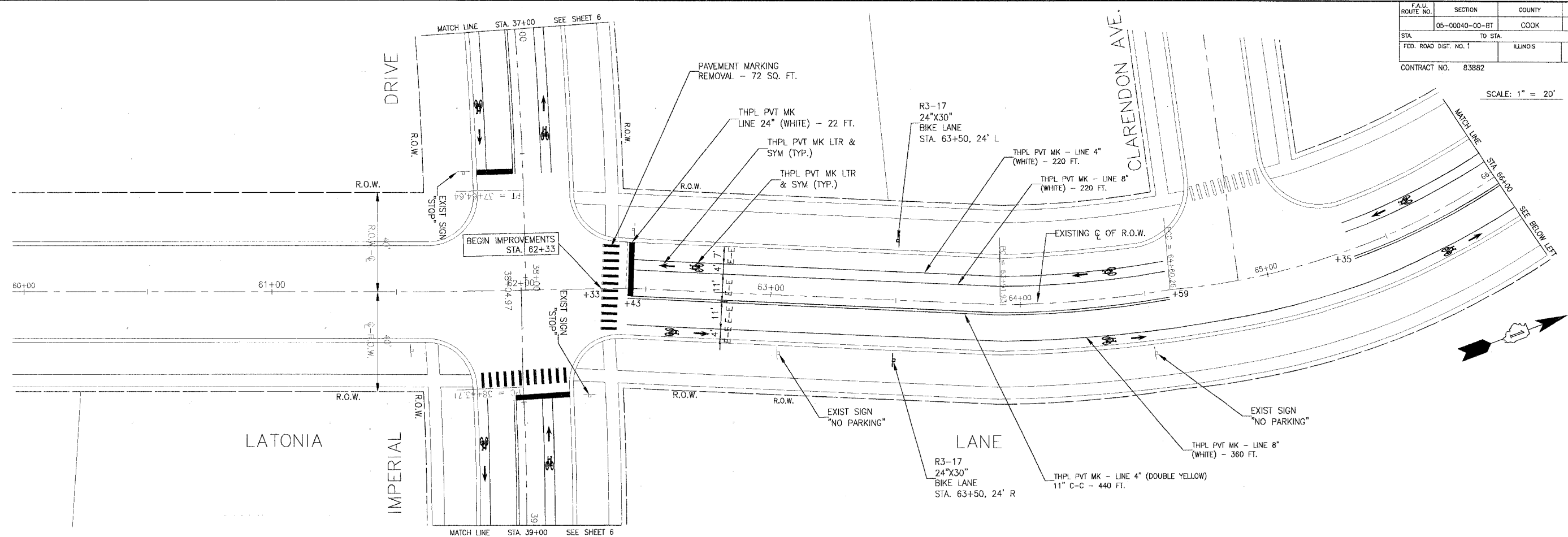
**VILLAGE OF RICHTON PARK, ILLINOIS**  
**LATONIA LANE/IMPERIAL DRIVE**  
**BIKEWAY**

**IMPERIAL DRIVE**  
**STA. 46+00 TO STA. 58+09.34**  
**PAVEMENT MARKING PLAN**

DESIGNED BY CAC	SCALE HORIZ. 1" = 20'
DRAWN BY SMS	PROJECT NO. 050454
CHECKED BY NJP	SHEET NO. 7 OF 10
DATE 7-28-06	

F.A.U. ROUTE NO.	SECTION	COUNTY	TOTAL SHEETS	SHEET NO.
05-00040-00-BT	COOK	10	8	
STA.	TO STA.	ILLINOIS	FED AID PROJECT	
FED. ROAD DIST. NO. 1	ILLINOIS		CMM-8003 (529)	
CONTRACT NO. 83882				

SCALE: 1" = 20'



I:\RCHPK\050454-100\imperialbikepat\DWG\50454ppm.dwg - SH12  
 Plotted: 10-03-06 @ 1:12pm By: 354jpp  
 Copyright © 2006, By Baxter & Woodman, Inc.  
 State of Illinois - Professional Design Firm  
 License No. - 184-001121 - Expires 4-30-07

CONSULTANTS	REV. NO.	DATE	DESCRIPTION
* - REFER TO EQUIPMENT MANUFACTURER'S SHOP DRAWINGS	1	9-29-06	PER IDOT COMMENTS 9-18-06
	2	10-3-06	PER IDOT COMMENTS 10-2-06

**BAXTER & WOODMAN**  
 Consulting Engineers

*Baxter & Woodman*  
 Crystal Lake, Illinois 815.459.1280  
 Burlington, Wisconsin 262.263.7834  
 Mokena, Illinois 708.478.2690  
 DeKalb, Illinois 815.787.3111  
 Grayslake, Illinois 815.223.5088  
 Rockford, Illinois 815.495.1551  
 Plainfield, Illinois 815.609.7425

**VILLAGE OF RICHTON PARK, ILLINOIS**  
**LATONIA LANE/IMPERIAL DRIVE**  
**BIKEWAY**

**LATONIA LANE**  
**STA. 60+00 TO STA. 70+00**  
**PAVEMENT MARKING PLAN**

DESIGNED BY CAC	SCALE HORIZ. 1" = 20'
DRAWN BY SMS	PROJECT NO. 050454
CHECKED BY NJP	SHEET NO. 8 OF 10
DATE 7-28-06	





