



Illinois Department of Transportation

2300 South Dirksen Parkway / Springfield, Illinois / 62764

January 4, 2007

SUBJECT: FAS 450 (CH 19)
Project RS-450(109)
Section 03-00125-00-RS
Warren County
Contract No. 89388
Item 62
January 19, 2007 Letting
Addendum (A)

TO PROSPECTIVE BIDDERS:

Due to clarify information necessary to revise the following:

**Proposal – Revised Index of Special Provisions. Added Highway Standard
630001-06 STEEL PLATE BEAM GUARDRAIL.**

Prime contractors must utilize the enclosed material when preparing their bid and must include any Schedule of Prices changes in their bidding proposal.

Bidders using computer-generated bids are cautioned to reflect any and all Schedule of Prices changes, if involved, into their computer programs.

Very truly yours,

Eric Harm
Interim Engineer of Design and Environment

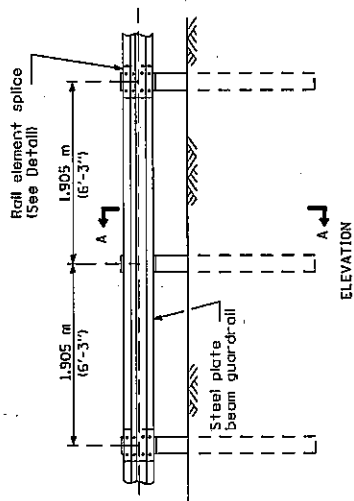
A handwritten signature in cursive script, reading "Ted B. Walschleger DE".

By: Ted B. Walschleger
Engineer of Project Development
and Implementation

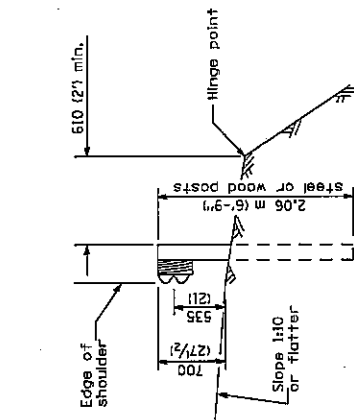
INDEX OF SPECIAL PROVISIONS

DESCRIPTION OF WORK	1
TRAFFIC CONTROL PLAN	1
TRAFFIC CONTROL SIGNS	1
BITUMINOUS EQUIPMENT	1
PAVEMENT SMOOTHNESS TESTER	1
MAILBOX TURNOUTS, PRIVATE ENTRANCES, FIELD ENTRANCES & INTERSECTIONS	2
AGGREGATE QUALITY	2
GRANULAR AGGREGATE COURSES	2
STEEL PLATE BEAM GUARDRAIL REMOVAL, TYPE A	2
BUTT JOINTS, SPECIAL	2
STANDARD 6310001-06 STEEL PLATE BEAM GUARDRAIL.....	2a.

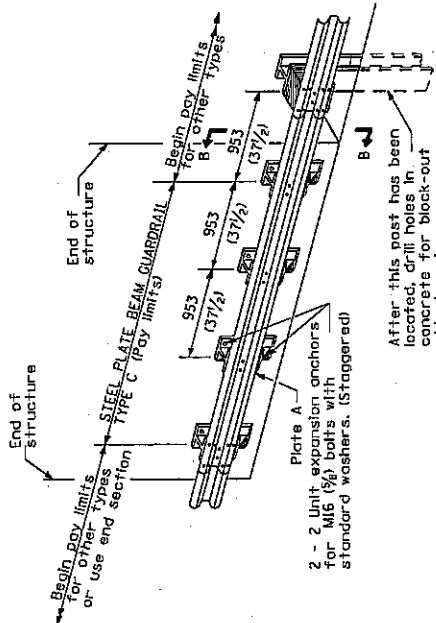
Revised January 4, 2007



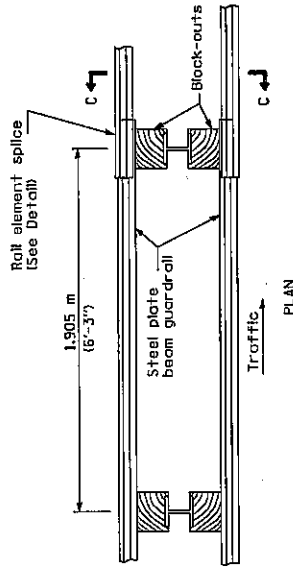
TYPE A
1.905 m (6'-3") Typical post spacing



TYPE B
953 (37 1/2) Closed post spacing



TYPE C
953 (37 1/2) Block-out spacing



TYPE D
Double steel plate beam guardrail
1.905 m (6'-3") typical post spacing

GENERAL NOTES

All slope ratios are expressed as units of vertical displacement to units of horizontal displacement (V:H).
All dimensions are in millimeters (inches) unless otherwise shown.

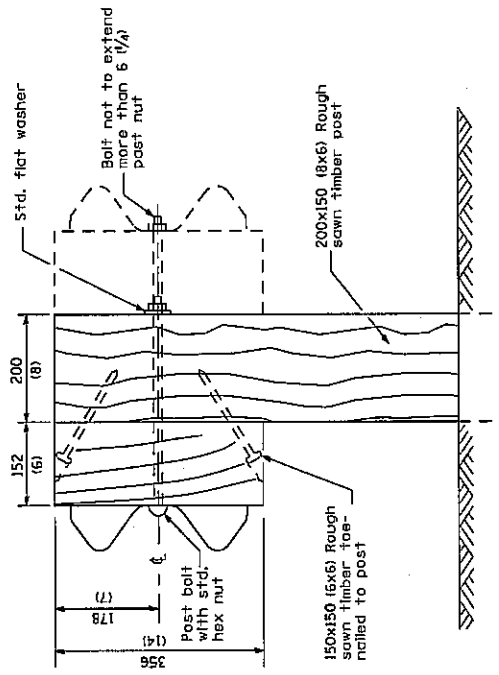
DATE	REVISIONS
4-1-06	Deleted plate washer F.
1-1-05	Rev. post in Impervious material on sheet 4.

STEEL PLATE BEAM GUARDRAIL

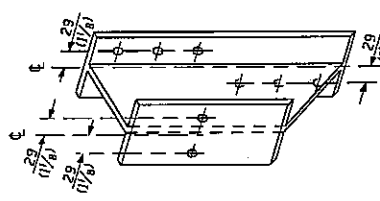
(Sheet 1 of 4)

STANDARD 630001-06

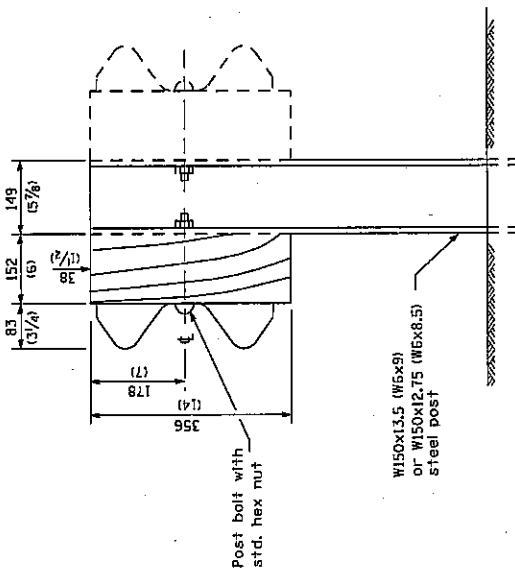
Illinois Department of Transportation	
ISSUED	1-1-97
DESIGNED BY	2026
CHECKED BY	PROCESSED
APPROVED	2006
ENGINEER OF DESIGN AND ENVIRONMENT	



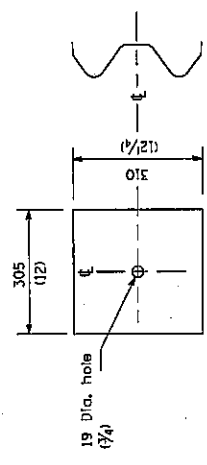
WOOD POST CONSTRUCTION



STEEL BLOCK-OUT DETAIL



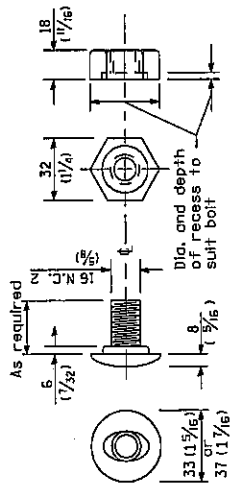
STEEL POST CONSTRUCTION



NOTE

Plate A shall be placed between rail element and block-out of non-splice incourring points only when steel block-outs are used.

PLATE A

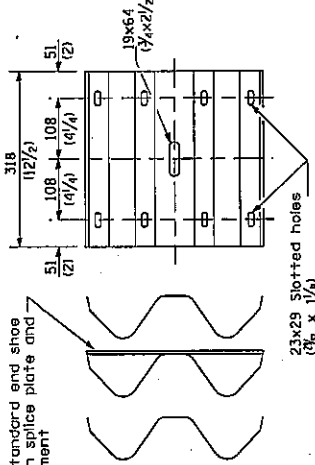


POST OR SPLICE BOLT & NUT

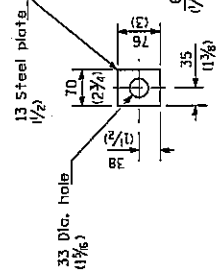
STEEL PLATE BEAM GUARDRAIL
(Sheet 2 of 4)
STANDARD 630001-06

		PASSED APRIL 1 2016 ENGINEER OF POLICY AND PROCEDURES APPROVED APRIL 24 2016 ENGINEER OF DESIGN AND CONSTRUCTION	ISSUED 1-1-97
--	--	---	---------------

Place standard end shoe between splice plate and rail element

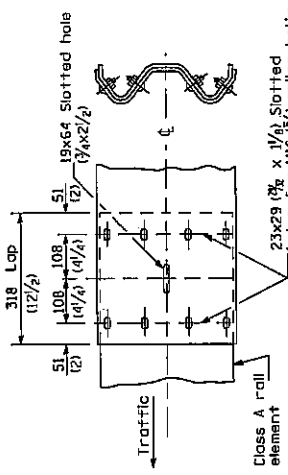
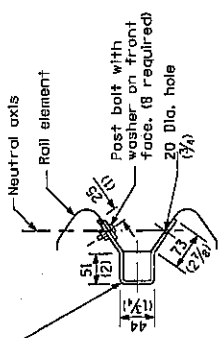


SPLICE PLATE

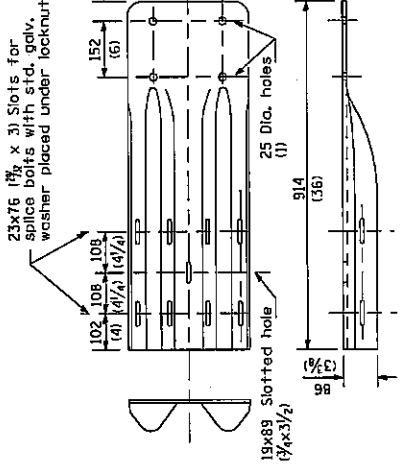


NOTE
Anchor plate T shell be used to attach cable assembly to guardrail when required on traffic barrier terminals.

ANCHOR PLATE T DETAILS

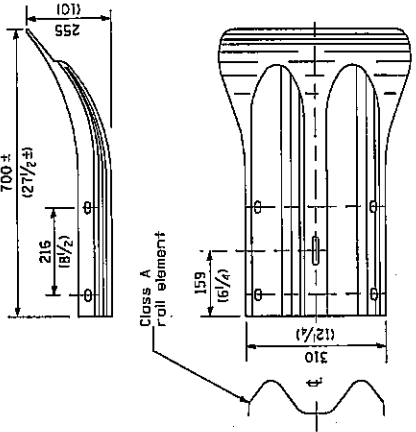


RAIL ELEMENT SPLICE

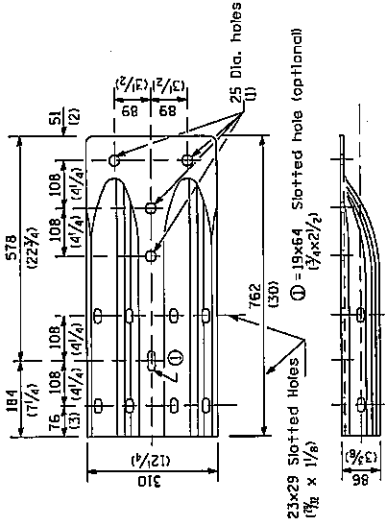


NOTE

When end shoe is attached to a bridge parapet which has an expansion joint, the bolts shall be provided with a locknut or double nut and shall be tightened only to a point that will allow guardrail movement.
The standard end shoe shall be attached to the concrete with pre-drilled or self-drilling anchor bolts. The anchor cone shall be set flush with the surface of the concrete.
Externally threaded studs protruding from the surface of the concrete will not be permitted.



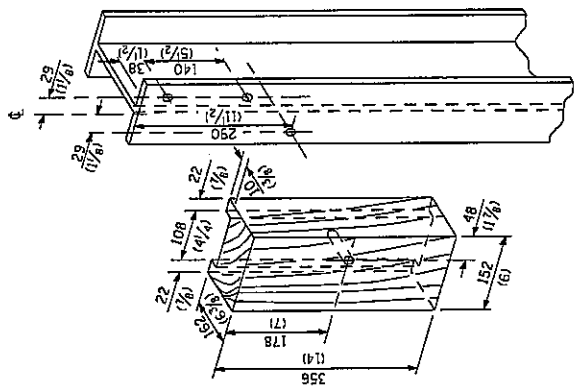
END SECTION



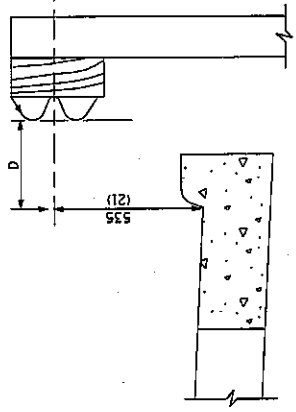
ALTERNATE END SHOE

Illinois Department of Transportation
 PASSED: [Signature] 2006
 ENGINEER OF POLITICAL AFFAIRS
 APPROVED: [Signature] 2006
 ENGINEER OF DESIGN AND ENVIRONMENT

**STEEL PLATE BEAM
 GUARDRAIL**
 (Sheet 3 of 4)
STANDARD 630001-06



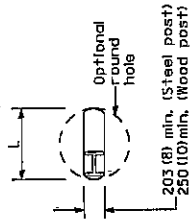
WOOD BLOCK-OUT AND STEEL POST DETAILS



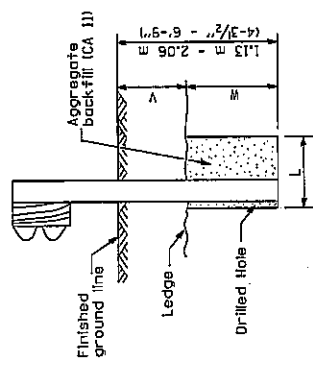
Note:
If it is necessary for D to be more than 300 (12) and less than 3.0 m (10'-0"), type M-5 (M-2) curb and gutter (Std. 60500) shall be used in front of and in advance of the guardrail.

GUARDRAIL PLACED BEHIND CURB

(D = 0 desirable to 300 (12) maximum)



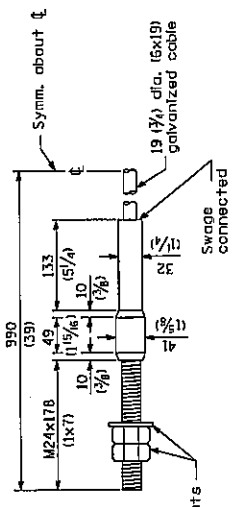
PLAN



Note:
Ledge line is top of rock ledge or hard slag fill.

ELEVATION

V	W	L	
		Steel Post	Wood Post
D - 460 10 - 18)	610 (24)	530 (21)	580 (23)
>460 - 825 >18 - 41.5)	305 (12)	203 (8)	250 (10)
>825 - 1.13 m (41.5 - 53.5)	305 - 0 (12 - 0)	203 (8)	250 (10)



CABLE ASSEMBLY

(18,100 kg (40,000 lbs.) min. breaking strength)
Tighten to four tension.

FOOTING FOR POST WHEN IMPERVIOUS MATERIAL IS ENCOUNTERED

STEEL PLATE BEAM GUARDRAIL
(Sheet 4 of 4)
STANDARD 630001-06

Illinois Department of Transportation
 PASSED: [Signature] 2005
 ENGINEER OF PUBLIC WORKS
 APPROVED: [Signature] 2006
 ENGINEER OF DESIGN AND ENVIRONMENT

ISSUED 1-1-97

2d.