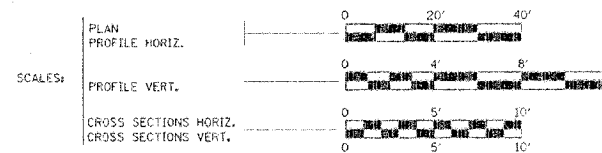


STATE OF ILLINOIS
DEPARTMENT OF TRANSPORTATION
PLANS FOR PROPOSED
BRIDGE REPLACEMENT

ROUTE NO.	DISTRICT	COUNTY	SHEET NO.	TOTAL SHEETS
FAS 460	*	FULTON	13	1
FED. ROAD DIST. NO.	SECTION	PROJECT	*05-00131-00-BR	

INDEX OF SHEETS

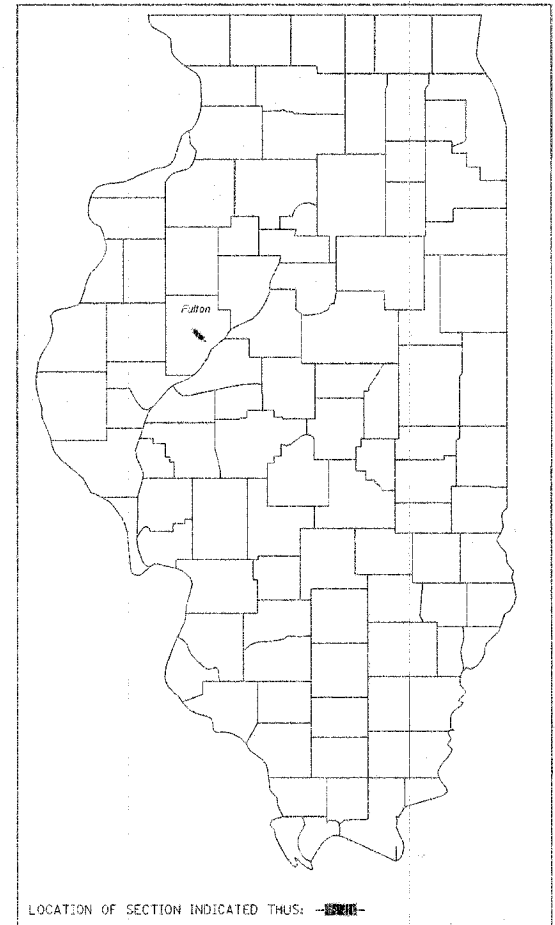
SHEET NO.	DESCRIPTION
1	COVER SHEET
2	SUMMARY & SCHEDULE OF QUANTITIES AND TYPICAL CROSS SECTIONS
3	PLAN & PROFILE
4	TEMPORARY EROSION CONTROL PLAN
5-6	CROSS SECTIONS
7-13	BRIDGE PLANS



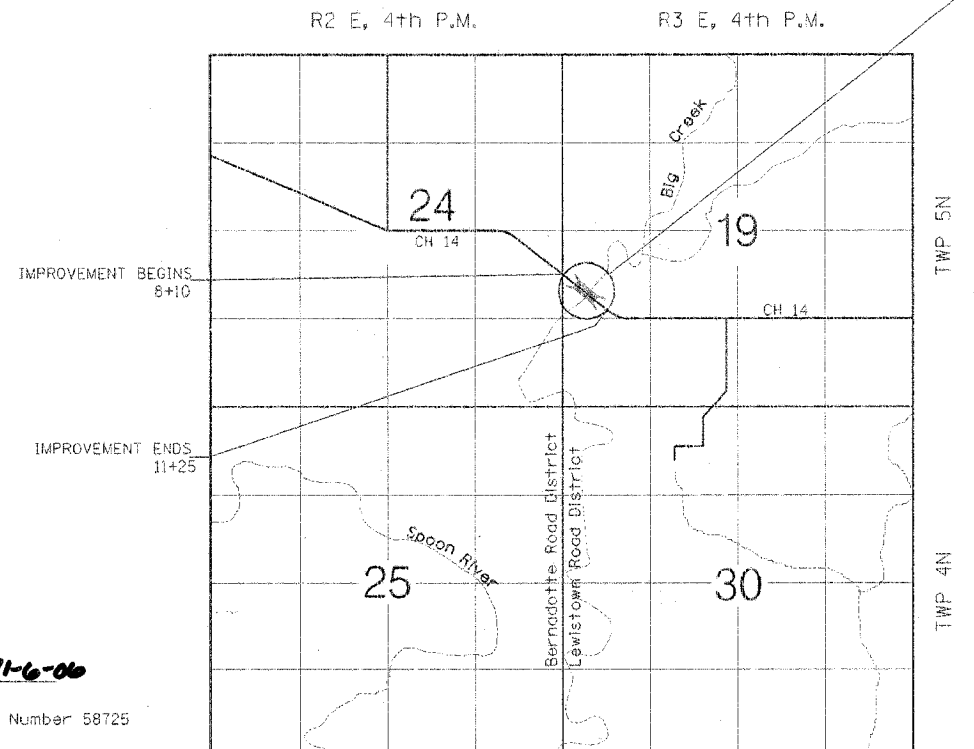
FULTON COUNTY
SECTION 05-00131-00-BR
BRS 0460(104)
FAS 460
COUNTY HIGHWAY 14
BRIDGE REPLACEMENT
AND REHABILITATION PROGRAM
C-94-137-06

ILLINOIS DEPT. OF TRANSPORTATION STANDARD DRAWINGS

STANDARD NO.	DESCRIPTION
000001-04	STANDARD SYMBOLS, ABBREVIATIONS, AND PATTERNS
280001-03	TEMPORARY EROSION CONTROL SYSTEMS
515001-02	NAME PLATE FOR BRIDGES
630001-07	STEEL PLATEBEAM GUARDRAIL
630301-04	SHOULDER WIDENING FOR TYPE 1 SPECIAL GUARDRAIL TERMINALS
631026-03	TRAFFIC BARRIER TERMINAL TYPE 5 & 5A
701006-02	OFF ROAD OPERATIONS, 2L, 2W, 15' TO 24' FROM PAVEMENT EDGE
701301-02	LANE CLOSURE, 2L, 2W, SHORT TIME OPERATIONS
702001-06	TRAFFIC CONTROL DEVICES
BLR 21-6	TYPICAL APPLICATION OF TRAFFIC CONTROL DEVICES FOR CONSTRUCTION OF RURAL LOCAL HIGHWAYS
BLR 23-1	TRAFFIC BARRIER TERMINAL TYPE 1



PROPOSED STRUCTURE STA. 9+94
THREE-SPAN PRECAST PRESTRESSED
CONC. BRIDGE 164.5' BK. TO BK
ABUTMENTS, NO SKEW, 24'-0"
OUT TO OUT OF DECK.
OLD STRUCTURE NO. 029-3024
NEW STRUCTURE NO. 029-3224



LOCATION MAP

ADT = 350 (CURRENT), < 350 (DESIGN)
FUNCTIONAL CLASS = MAJOR COLLECTOR

NET LENGTH OF SECTION = 315.00 FEET = 0.060 MILES

CAT #033079-00

COMMITMENTS-NONE



Kelly Jo Hoffmann 11-6-06
KELLY JO HOFFMANN
Illinois Licensed Professional Engineer Number 58725
License Expires 11/30/07

CONTRACT #89438

FDR JOINT UTILITY INFORMATION
CALL TOLL FREE 1-800-892-0123

APPROVED 11-8 2006
William Kuhn
WILLIAM KUHN, PE FULTON COUNTY ENGINEER

Nov 16
PASSED Nov 16 2006
David Laballe
DISTRICT FOUR ENGINEER OF
LOCAL ROADS & STREETS

Releasing For
Bid Based on
Limited Review
Nov 17, 2006
Joseph E. Brown
DEPUTY DIRECTOR OF HIGHWAYS,
REGION THREE ENGINEER
STATE OF ILLINOIS
DEPARTMENT OF TRANSPORTATION

FRAUENHOFER

Frauenhoffer and Associates, P.C. Consulting Engineers
3002 Crossing Court Champaign, IL 61822 217-351-6268