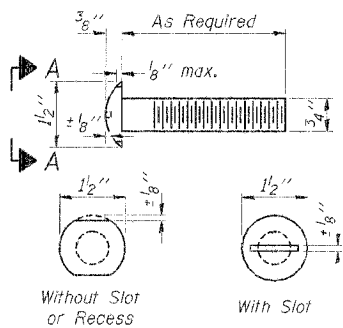
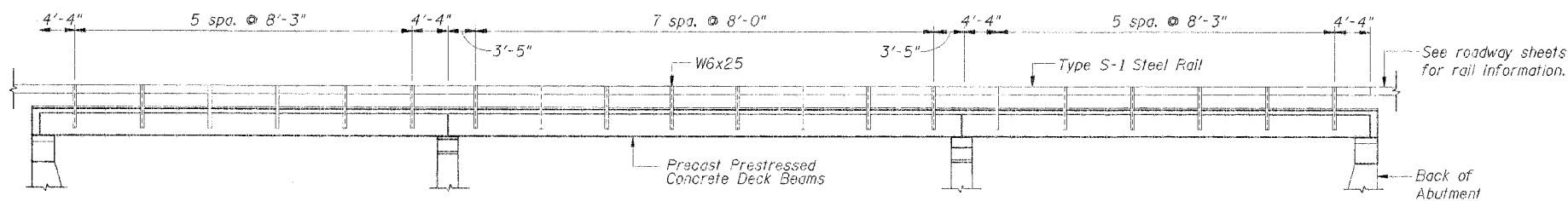


REV. NO.	DESCRIPTION	DATE	BY
FAS 460	Fulton	13	11
FURNISHING EST. NO. 7		ILLINOIS	STATE PROJECT

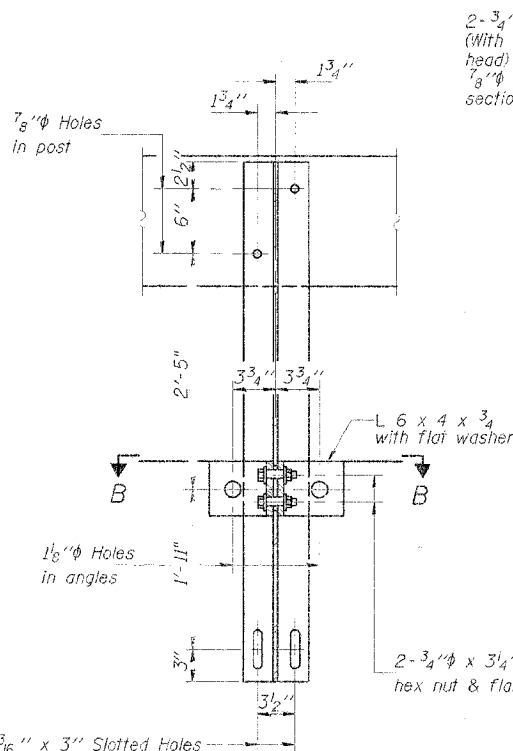
\*05-00131-00-BR



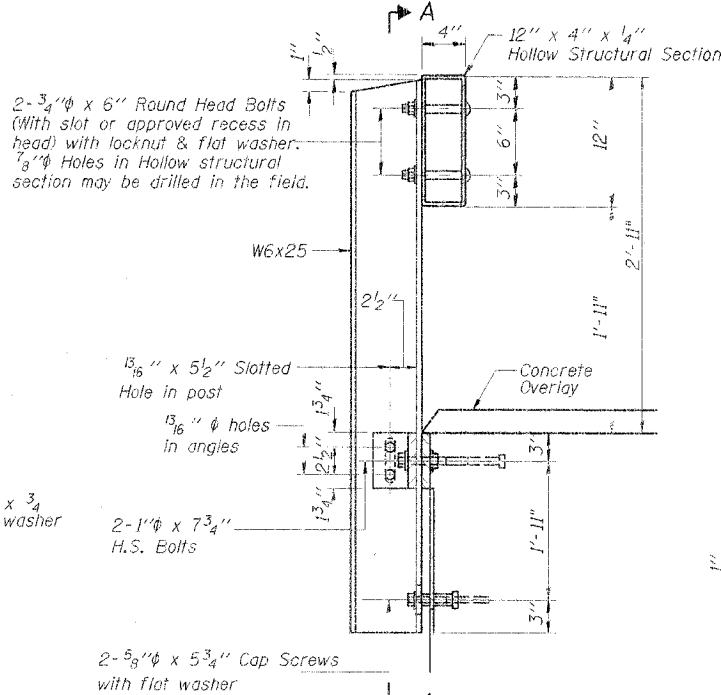
VIEW A-A  
ROUND HEAD BOLT



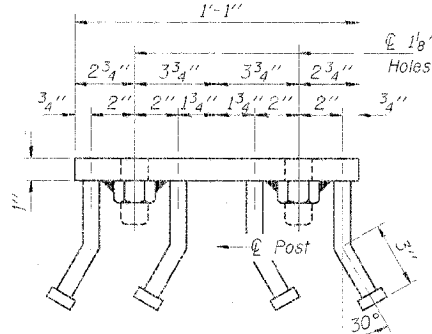
STEEL RAILING ELEVATION



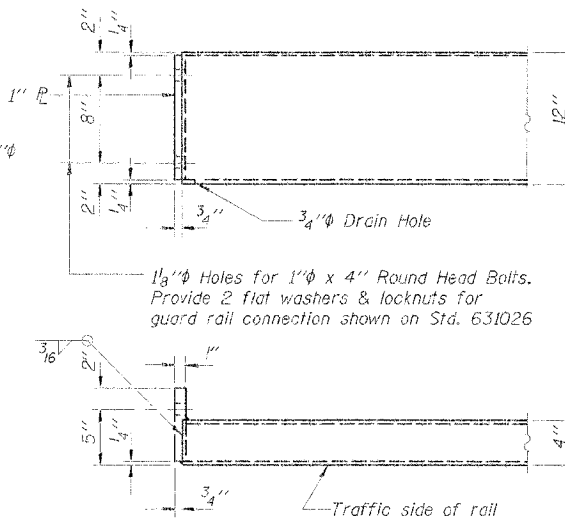
SECTION A-A



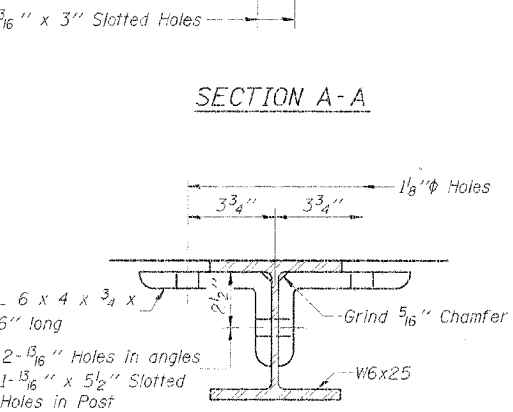
SECTION AT RAIL POST



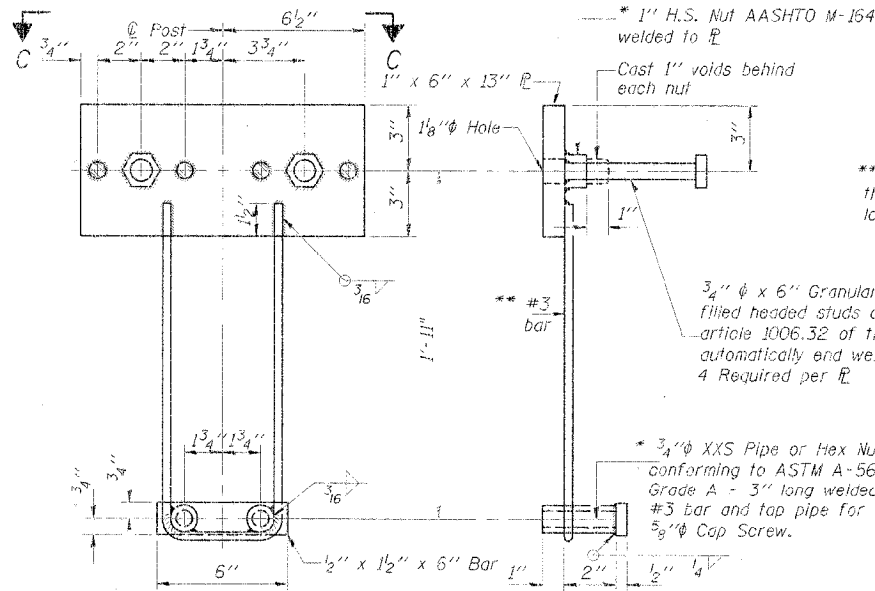
VIEW C-C



END OF RAIL DETAILS



SECTION B-B

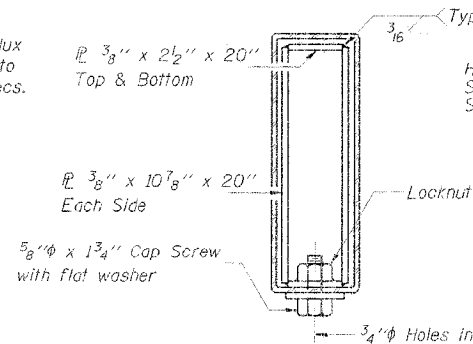


ANCHOR DEVICE \* Threaded areas shall be plugged or blocked off during casting of beam.

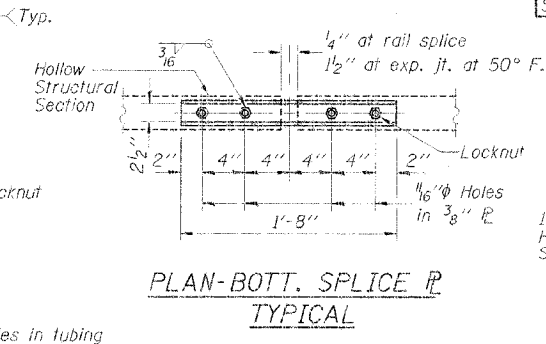
\*\* Whenever the lower insert assemblies interfere with strand locations, the #3 bars shall be cut and adjusted in order to allow raising or lowering of the lower inserts. Maximum adjustment not to exceed 1/2 inch.

3/4 inch diameter x 6 inch Granular or solid flux filled headed studs conforming to article 1006.32 of the Std. Specs. automatically end welded. 4 Required per R.

\* 3/4 inch XXS Pipe or Hex Nuts conforming to ASTM A-563, Grade A - 3 inch long welded to #3 bar and tap pipe for 5/8 inch diameter Cap Screw.



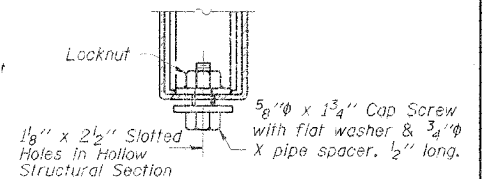
SECTIONS AT RAIL SPLICE



PLAN-BOTT. SPLICE R TYPICAL

BILL OF MATERIAL

Item	Unit	Quantity
Steel Railing Type S-1	Foot	326



RAIL SPLICE CONNECTION AT EXPANSION JT.

**NOTES**

Hollow structural steel tubing shall conform to the requirements of ASTM designation A-500 Grade B Structural Steel Tubing and shall meet the longitudinal CVN requirements of 15 ft-lbs at 0° F.

All other steel shapes and plates shall conform to the requirements of AASHTO M-270 Grade 36 except posts and angles shall conform to AASHTO M-270, Grade 50.

Bolts, cap screws, and nuts shall conform to the requirement of ASTM designation A-307 except for high strength bolts, nuts and washers noted which shall conform to AASHTO M-164.

All bolts, nuts, cap screws, washers and lock washers shall be galvanized in accordance with AASHTO M-232.

All posts, railing, rail splices, anchor devices and angles shall be galvanized after shop fabrication in accordance with AASHTO M-111 and ASTM A-385. Galvanized rail shall not be painted.

Railing shall be in accordance with Section 509 of the Standard Specifications, except as noted, and will be paid for at the contract unit price per foot for STEEL RAILING, TYPE S-1.

All field drilled holes shall be coated with an approved zinc rich paint before erection.

The lower portion of the post flange in contact with concrete shall receive two coats of asphalt paint conforming to Section 1060.07 Type II or place 1/8 inch fabric bearing pad between the post and concrete.

The 3/4 inch high strength bolts used to connect the 6 x 4 x 3/4 angles to the post shall be tightened in accordance with Article 505.04(FX2) of the Standard Specifications. The 1 inch high strength bolts connecting the angles to the concrete shall be tightened to a snug fit and given an additional 1/2 turn. The 5/8 inch cap screws in bottom of posts shall be tightened to a snug fit only.

DSGN	K.J. Hoffmann				
DR	K.J. Hoffmann				
CHK	J. Wolf				
APVD	J.A. Fraunhoffer	NO.	DATE	REVISION	BY

**FRAUENHOFER**  
Fraunhoffer and Associates, P.C. Consulting Engineers  
3002 Crossing Court Champaign, IL 61822 217-351-6268

STEEL RAILING TYPE S-1	SHEET 11
COUNTY HIGHWAY 14	DWG NO. 2047-s1.dgn
SECTION 05-00131-00-BR	DATE AUG 2006
FULTON COUNTY	PROJ NO. 5-147