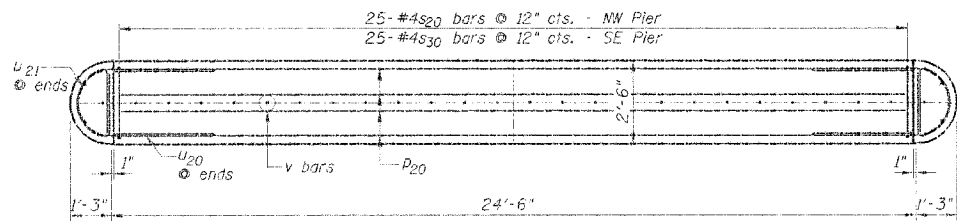


NO. 460	SECTION *	DATE: Fulton	SHEET 13	TOTAL 13
PROJECT: FAS 460		JOB NO. 05-00131-00-BR		

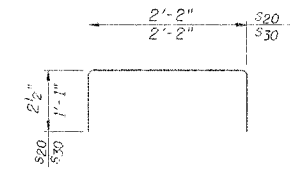
*05-00131-00-BR



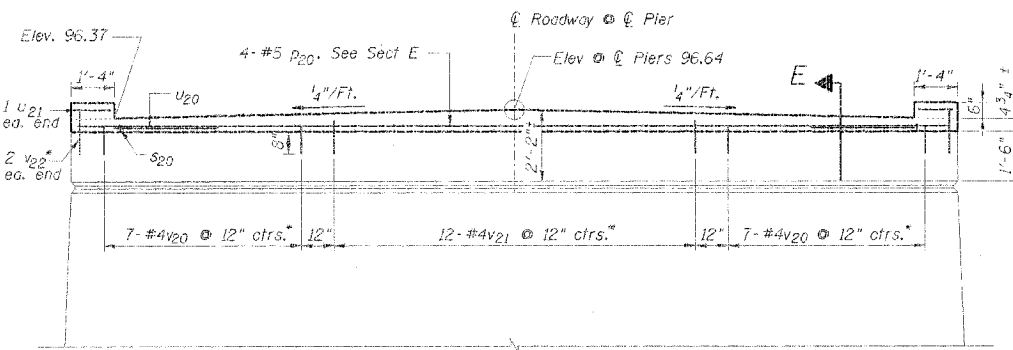
NW & SE PIERS
PLAN VIEW
Symmetrical about \bar{C}

NOTES:

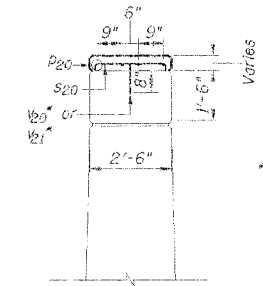
- All surfaces in which new concrete will be cast against shall be bushammered. Any cracked or loose material shall be removed with a chipping hammer. Surfaces shall be cleaned prior to casting. The cost of this work shall be incidental to CONCRETE STRUCTURES.
- The contractor shall field verify ALL DIMENSIONS before removing any portion of the existing substructure, placing reinforcing, or forming concrete.



BARS s20 and s30

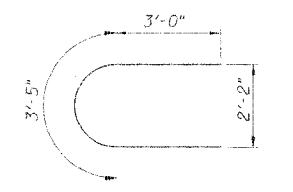


NW PIER ELEVATION
Symmetrical about \bar{C}

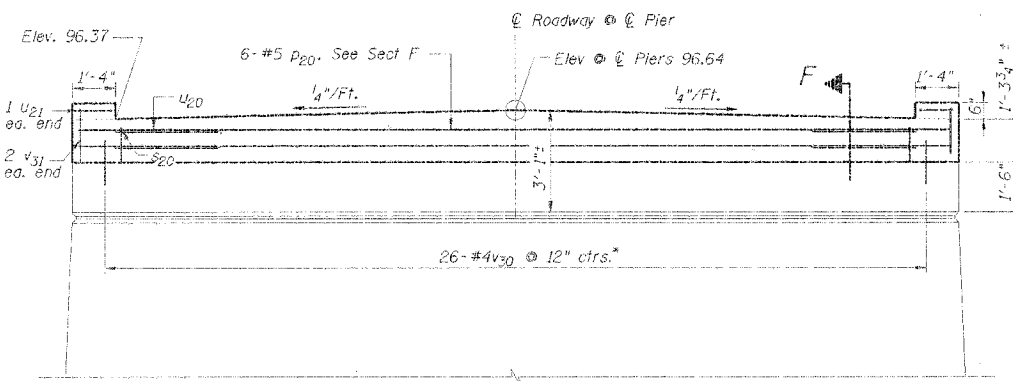


Use 2" clr cover.

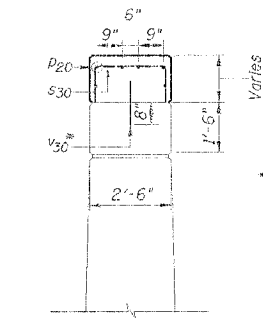
SECTION E
(Perpendicular to \bar{C} of Pier)



BAR U20

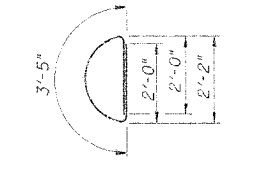


SE PIER ELEVATION
Symmetrical about \bar{C}



Use 2" clr cover.

SECTION F
(Perpendicular to \bar{C} of Pier)



BAR U21

BILL OF MATERIAL - 2 PIERS

Bar	No.	Size	Length	Shape
P20	10	# 5	24'-6"	—
s20	25	# 4	2'-7"	U
s30	25	# 4	4'-4"	U
U20	6	# 5	9'-5"	U
U21	4	# 4	7'-5"	U
V20	14	# 4	0'-10"	—
V21	12	# 4	1'-0"	—
V22	4	# 4	1'-5"	—
V30	26	# 4	1'-4"	—
V31	4	# 4	1'-7"	—
Concrete Structures		Cu. Yds.	5.0	
Reinforcement Bars		Lbs.	500	

DSGN	K.J. Hoffmann				
DR	K.J. Hoffmann				
CHK	J. Wolf				
APVD	A. Frauenhoffer	NO.	DATE	REVISION	BY

FRAUENHOFFER
Frauenhoffer and Associates, P.C. Consulting Engineers
3002 Crossing Court Champaign, IL 61822 217-351-6268

PIER CAP RETROFIT
COUNTY HIGHWAY 14
SECTION 05-00131-00-BR
FULTON COUNTY

SHEET	13
DWG NO.	5047pier.dgn
DATE	NOV 2006
PROJ NO.	5047