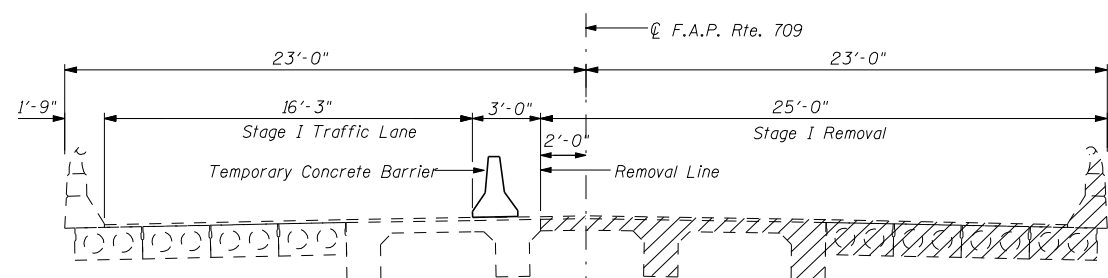
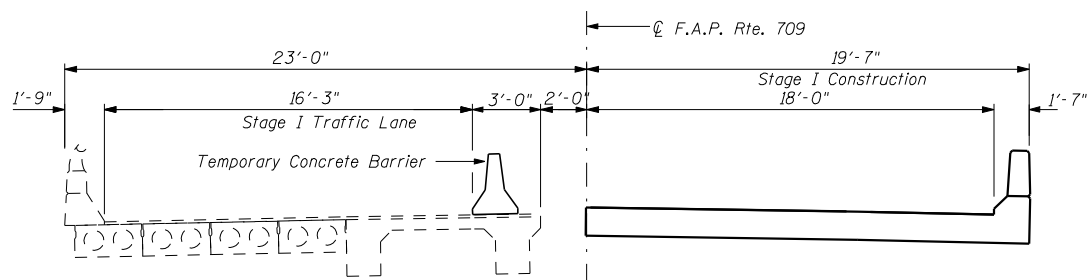


F.A.P. RTE.	SECTION	COUNTY	TOTAL SHEETS	SHEET NO.
709	105BR-5	CHAMPAIGN	31	12
STA. 2074+53	TO STA. 2082+62			
FED. ROAD DIST. NO.	ILLINOIS	FED. AID PROJECT		
CONTRACT 90933			SHEET 2 OF 11 SHEETS	



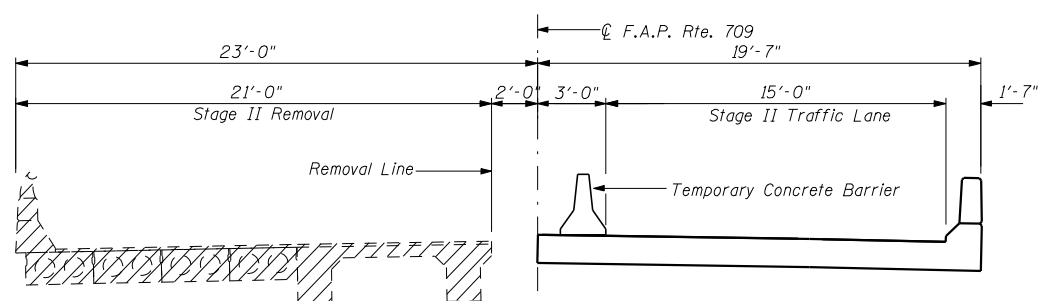
STAGE I REMOVAL

(Looking East)



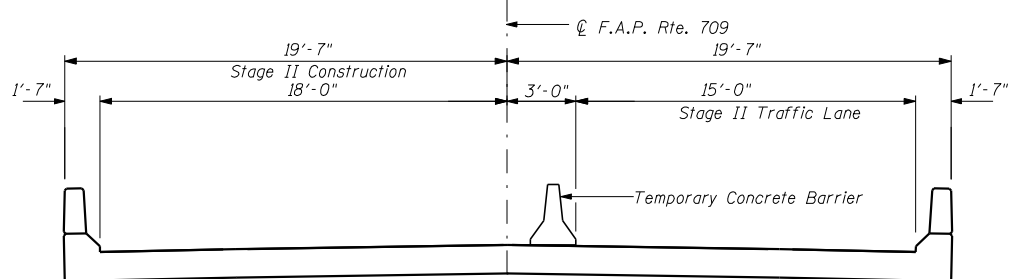
STAGE I CONSTRUCTION

(Looking East)



STAGE II REMOVAL

(Looking East)

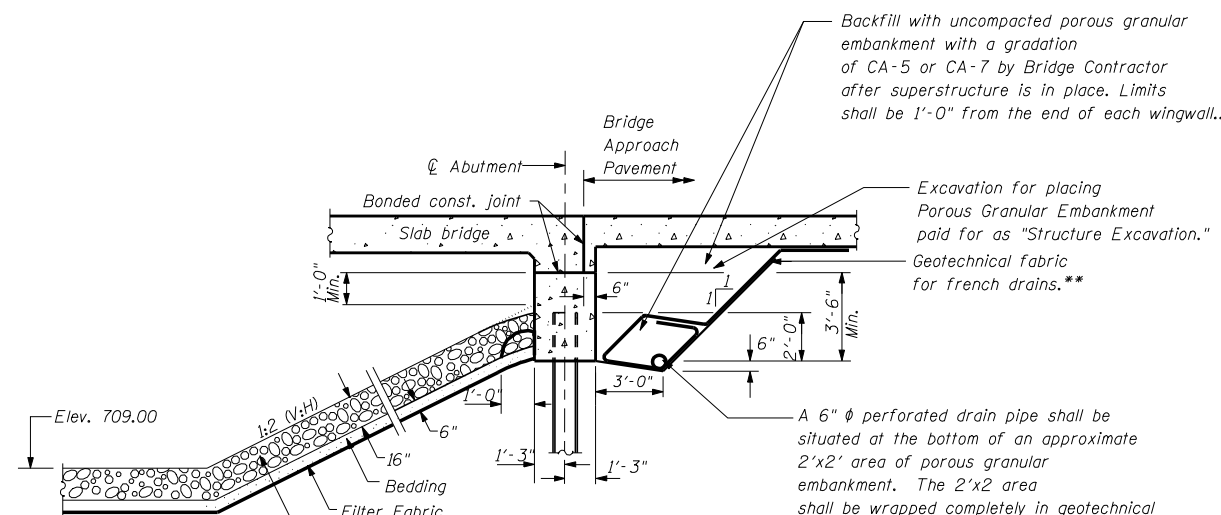


STAGE II CONSTRUCTION

(Looking East)

Notes:

Hatched area indicate Removal of Existing Structures.
For quantity of "Temporary Concrete Barrier" see Roadway Plans. For details see Sheet 9 of 11.



SECTION THRU INTEGRAL ABUTMENT

(at Rt. <'s)

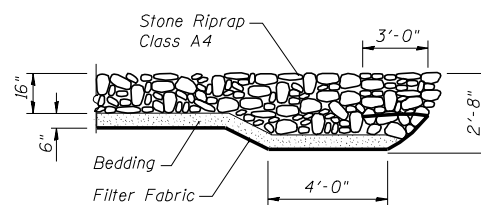
Backfill with uncompacted porous granular embankment with a gradation of CA-5 or CA-7 by Bridge Contractor after superstructure is in place. Limits shall be 1'-0" from the end of each wingwall.

Excavation for placing Porous Granular Embankment paid for as "Structure Excavation."

Geotechnical fabric for french drains.**

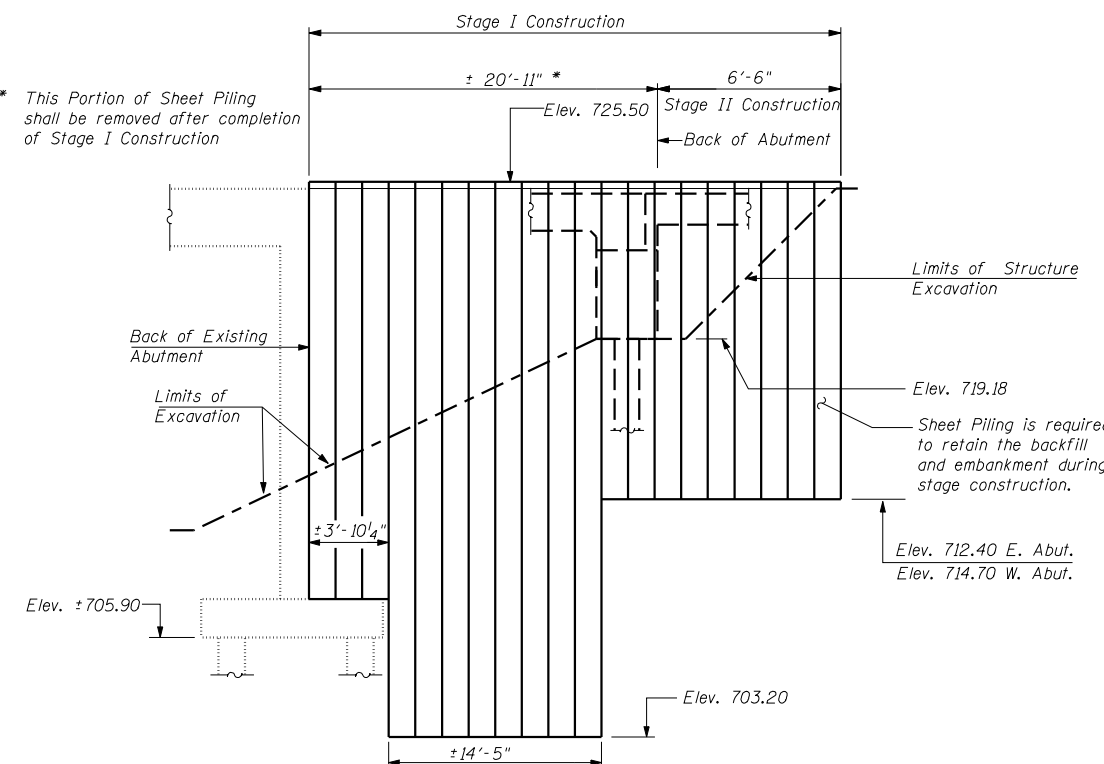
A 6" ϕ perforated drain pipe shall be situated at the bottom of an approximate 2'x2' area of porous granular embankment. The 2'x2' area shall be wrapped completely in geotechnical fabric for french drains. Extend pipe parallel with the cap until intersecting with the sideslope.**

** Included in the cost of "Porous Granular Embankment."



SECTION A-A

* This Portion of Sheet Piling shall be removed after completion of Stage I Construction



TEMPORARY SHEET PILING

Sheet Piling Notes:

- If the Contractor chooses to alter the temporary cantilevered sheet piling design requirements shown on the plans for lesser design requirements, then full design submittals with the required seals will be expected by the Department for review and approval.
- Minimum section modulus of temporary sheet piling shall be 15.1 in³ per foot of wall.

BILL OF MATERIAL

Item	Unit	Qty.
Temporary Sheet Piling	Sq. Ft.	998

REVISIONS	
NAME	DATE

ILLINOIS DEPARTMENT OF TRANSPORTATION
STAGE CONSTRUCTION
US ROUTE 136 OVER BIG DITCH
FAP RTE. 709 SECTION 105BR-5
STA. 2078+57.63
CHAMPAIGN COUNTY STR. NO. 010-0276
SCALE: NTS DRAWN BY LP
DATE 11-2001 CHECKED BY MJS