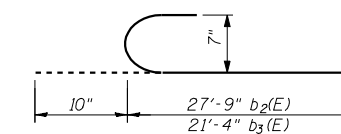
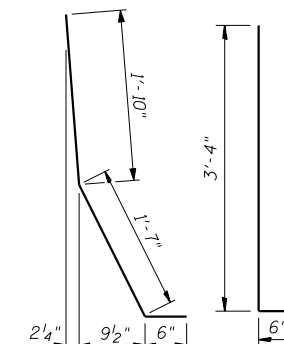


**INSIDE ELEVATION OF PARAPET**

[d (E), d<sub>1</sub> (E), and d<sub>2</sub> (E) see deck dwgs.]

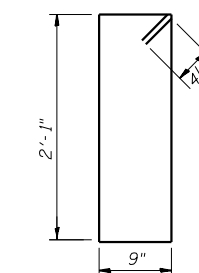


**BAR b<sub>2</sub>(E) and b<sub>3</sub>(E)**

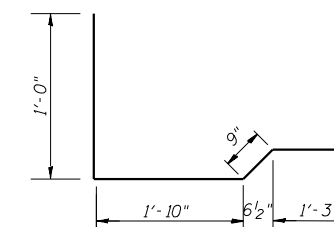


**BAR d (E)**

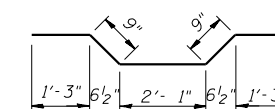
**BAR d<sub>1</sub>(E)**



**BAR s (E)**



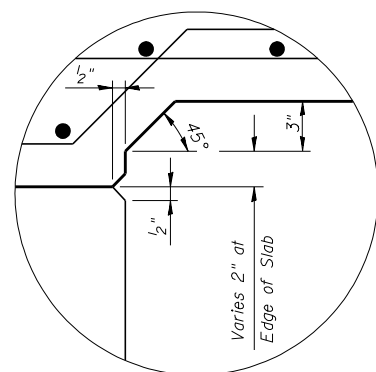
**BAR s<sub>1</sub>(E)**



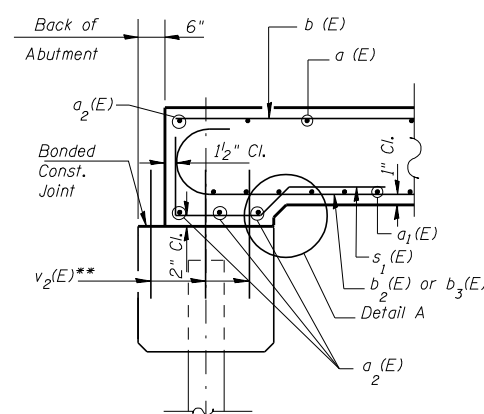
**BAR s<sub>2</sub>(E)**

**SUPERSTRUCTURE BILL OF MATERIAL**

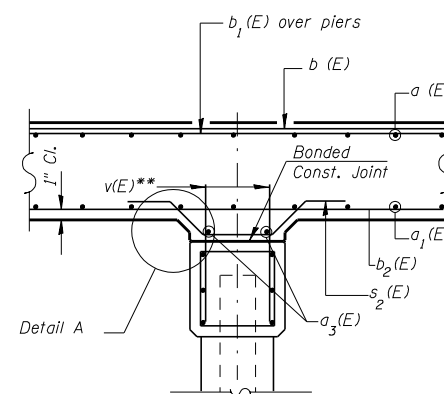
Bar	No.	Size	Length (Ft.)	Shape
a (E)	108	#5	19'-4"	—
a <sub>1</sub> (E)	130	#5	19'-4"	—
a <sub>2</sub> (E)	16	#5	20'-6"	—
a <sub>3</sub> (E)	8	#5	20'-6"	—
b (E)	72	#7	41'-9"	—
b <sub>1</sub> (E)	72	#8	12'-6"	—
b <sub>2</sub> (E)	72	#7	28'-7"	C
b <sub>3</sub> (E)	72	#7	22'-2"	C
b <sub>4</sub> (E)	36	#6	18'-0"	—
b <sub>5</sub> (E)	36	#7	31'-0"	—
b <sub>6</sub> (E)	12	#8	29'-2"	—
b <sub>7</sub> (E)	12	#5	28'-4"	—
b <sub>8</sub> (E)	12	#8	42'-0"	—
d (E)	166	#5	3'-11"	L
d <sub>1</sub> (E)	12	#5	3'-10"	L
d <sub>2</sub> (E)	164	#4	3'-4"	—
e (E)	24	#4	26'-2"	—
e <sub>1</sub> (E)	12	#4	27'-9"	—
s (E)	164	#4	6'-5"	□
s <sub>1</sub> (E)	80	#5	4'-10"	—
s <sub>2</sub> (E)	80	#5	6'-1"	—
Item			Unit	Qty.
Reinforcement Bars, Epoxy Coated			Lb.	30560
Concrete Superstructure			Yd. <sup>3</sup>	172.6
Floor Drains			Each	6



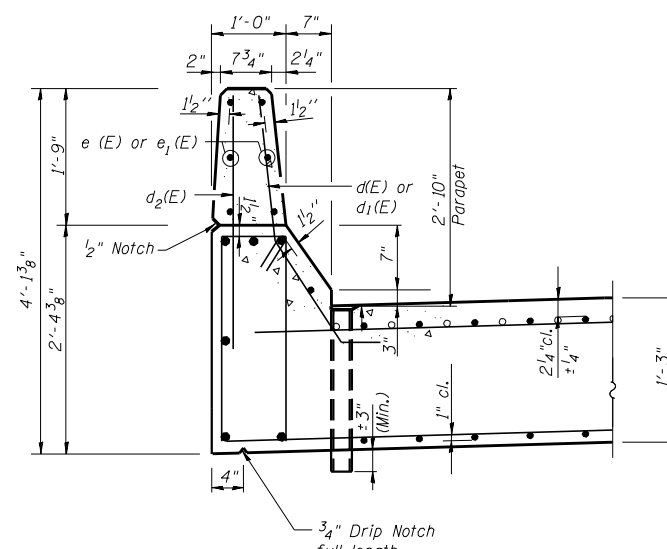
**DETAIL A**



**SECTION A-A**



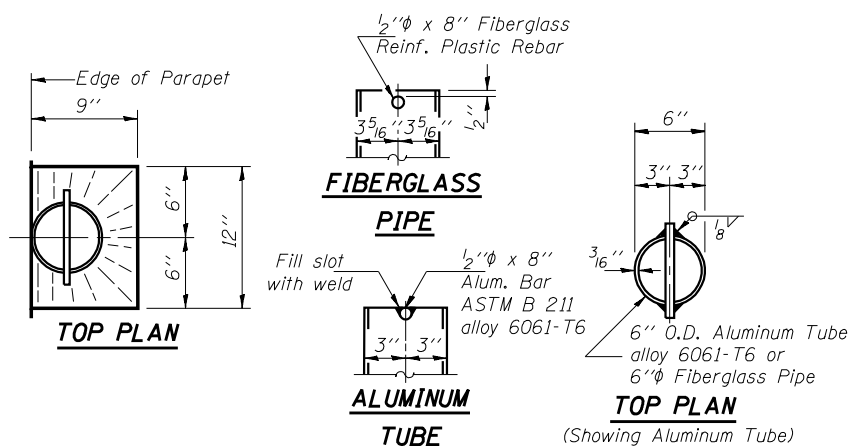
**SECTION B-B**



**SECTION THRU PARAPET**

Note: Floor Drains need not be painted

\*\* v(E) and v<sub>2</sub>(E) bars billed with Piers and Abutments see sheets 5 thru 7 of 11



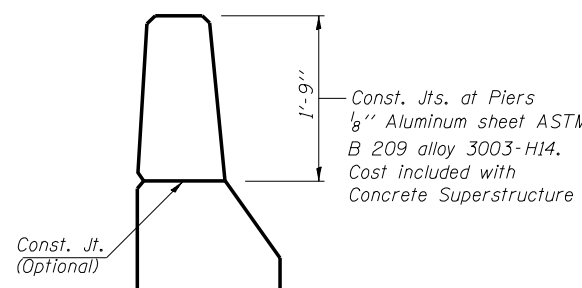
**TOP PLAN**

**FIBERGLASS PIPE**

**ALUMINUM TUBE**

**TOP PLAN**

(Showing Aluminum Tube)



**PARAPET JOINT DETAILS**

REVISIONS	
NAME	DATE

ILLINOIS DEPARTMENT OF TRANSPORTATION  
**SUPERSTRUCTURE DETAILS**  
 US ROUTE 136 OVER BIG DITCH  
 FAP RTE. 709 SECTION 105BR-5  
 STA. 2078+57.63  
 CHAMPAIGN COUNTY STR. NO. 010-0276  
 SCALE: NTS DRAWN BY LP  
 DATE 11-2001 CHECKED BY MJS